

SUPPLEMENTARY FIGURES
Figure 1. Aerosol Sampler and Description

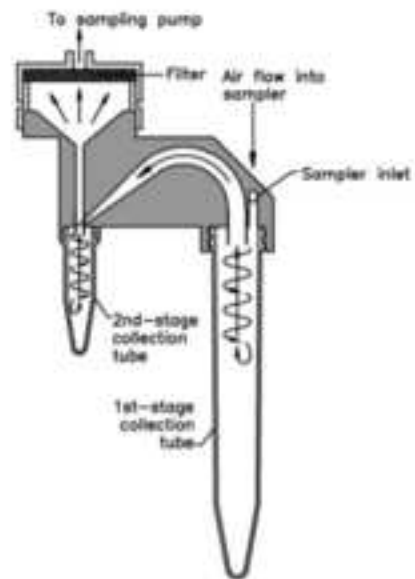


Figure 2. Nursing Station ICU 1 Sampler Locations



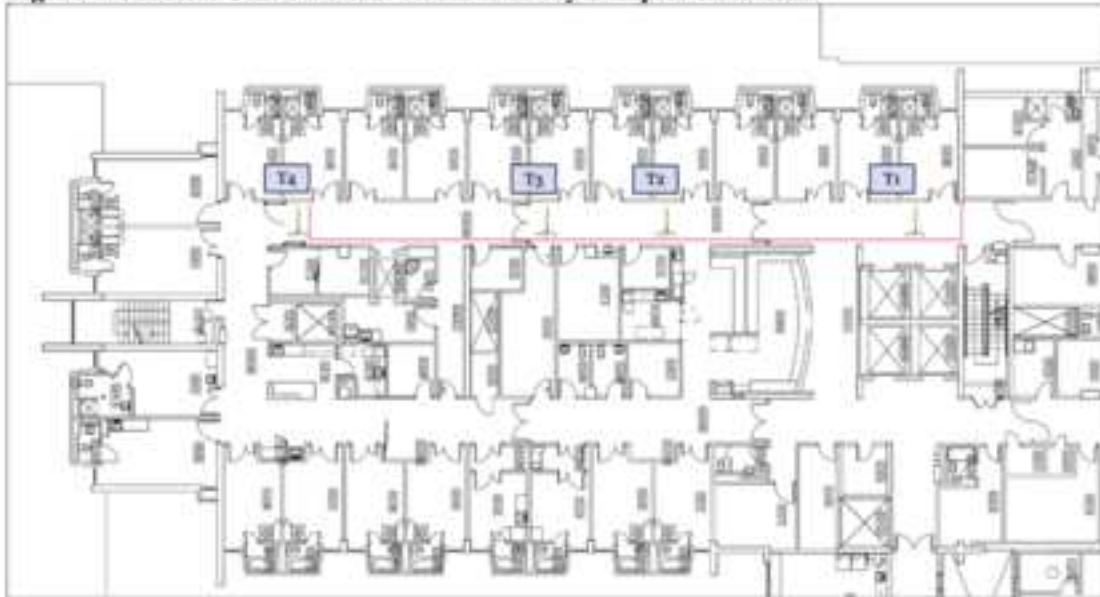
Four samplers were placed in various locations around the ICU nursing station. The patient rooms in this unit are maintained at a neutral pressure ranging from 8 to 3 air changes per hour ($\pm 10\%$) for a typical room.

Figure 3. Visitor Corridor ICU 1 Sampler Locations



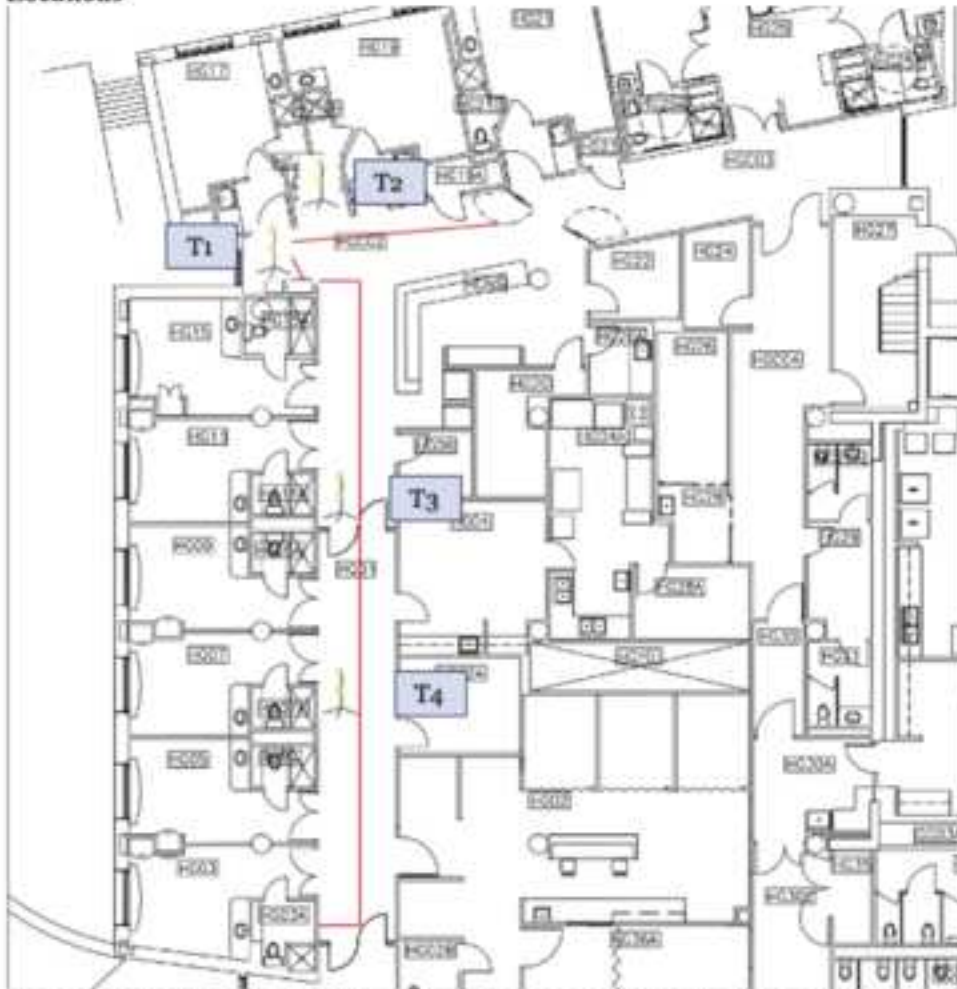
Four samplers were placed in the visitor corridor surrounding the ICU. The hallway was closed to visitors at the time of sampling. The patient rooms in this unit are maintained at a neutral pressure and supply air changes range from 8 to 3 air changes per hour (+/- 10%) for a typical room.

Figure 4. Medical Unit 1 Patient Room Hallway Sampler Locations



Three samplers were placed within the 'warm zone' (within the red lines) and one was placed just outside the 'warm zone'. The patient rooms in this unit are maintained at a neutral pressure and supply air changes range from 6.5 to 5.25 air changes per hour (+/- 10%) for a typical room.

Figure 5. Medical Unit 2 Hallway with Negative Pressure Patient Rooms Sampler Locations



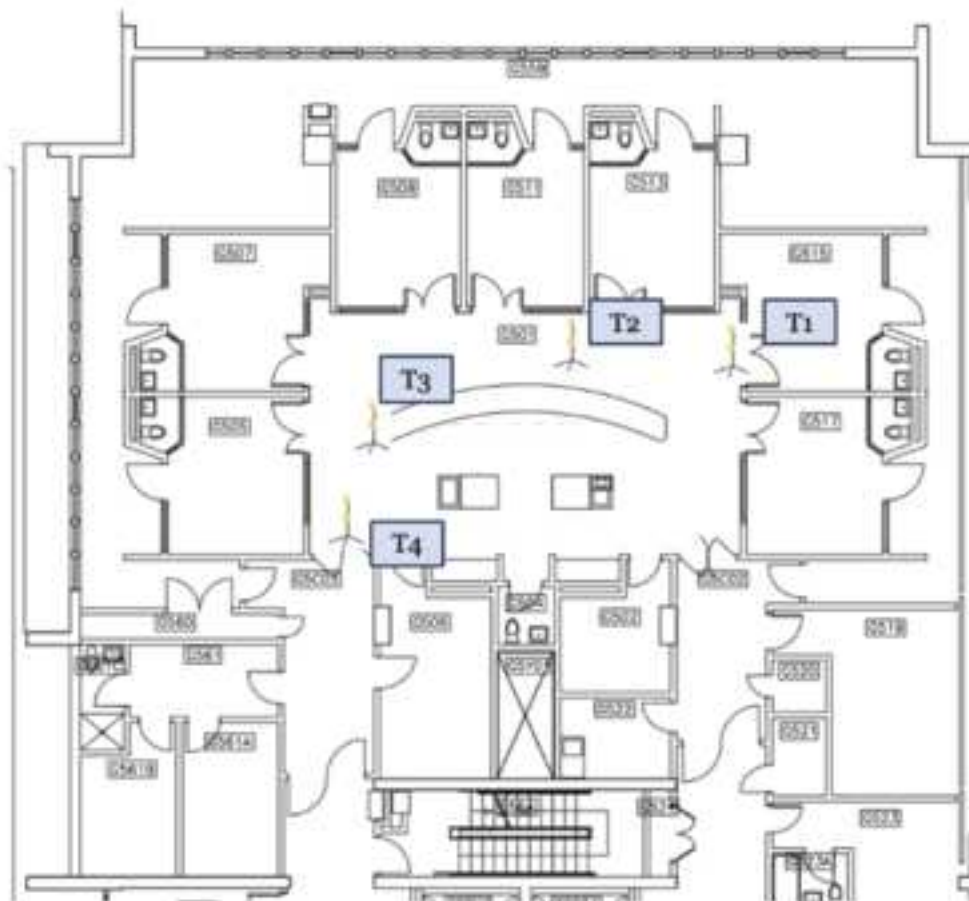
Three samplers were placed within the 'warm zone' (within the red lines) and the final sampler was placed in the 'cold zone' (outside of red lines). The patient rooms in this unit are maintained at a negative pressure with supply air changes ranging from 6 to 12 air changes per hour (+/- 10%). Three of the patient rooms also have anterooms, which are positive to the patient room and negative to the hallway.

Figure 6. ICU 2 Patient Room Hallway Sampler Locations



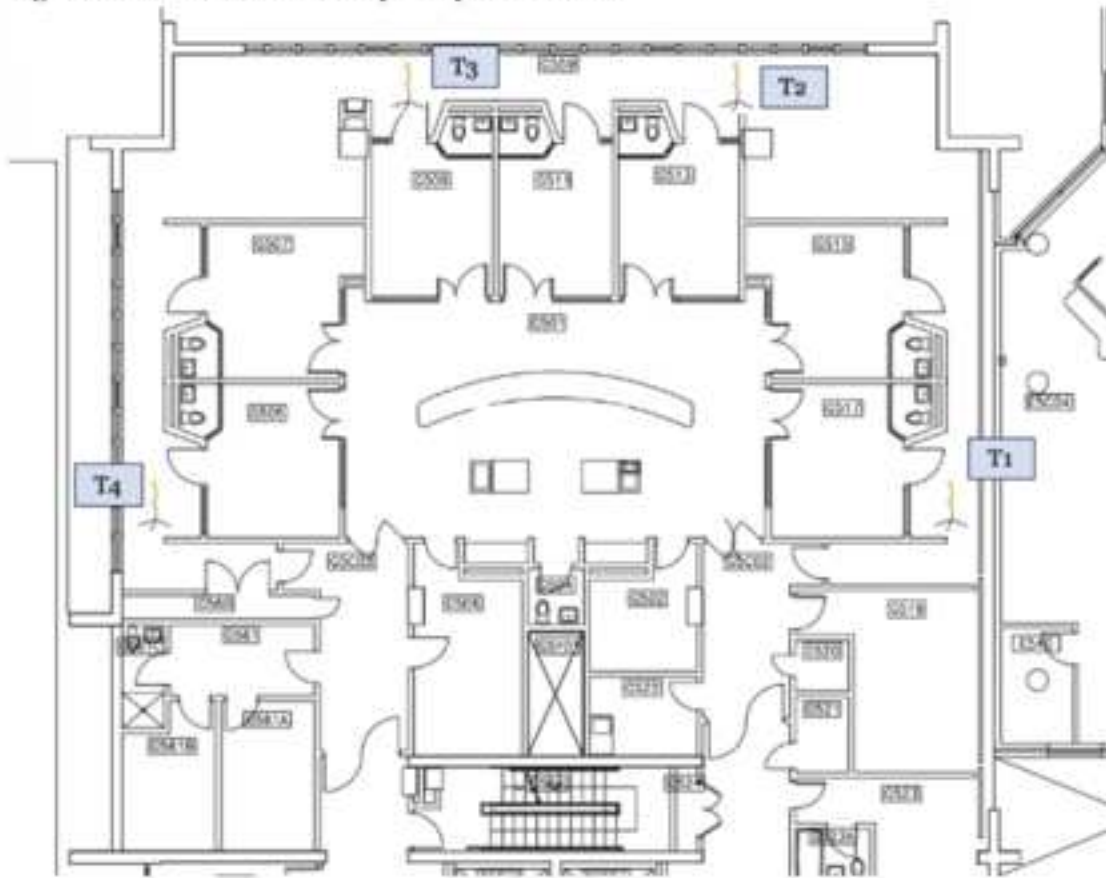
Four samplers were placed in the hallway, three of which were inside the 'warm zone' (within the red lines) and one of which was in the 'cold zone' (outside the red line). The patient rooms in this unit are maintained at a neutral pressure and supply air changes range from 24 to 2.8 air changes per hour (+/- 10%) for a typical room.

Figure 7. ICU 3 Nursing Station Hallway Sampler Locations



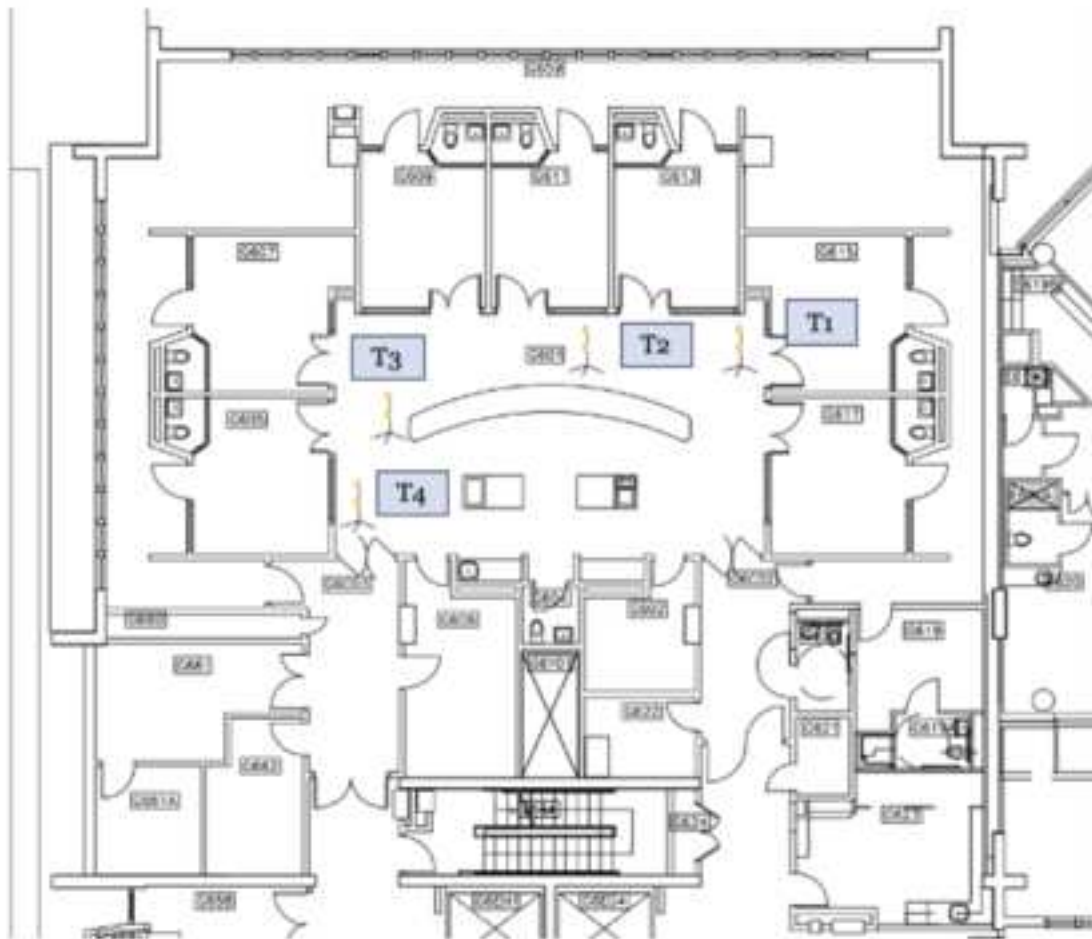
Four samplers were placed outside of patient rooms in the nursing station of the ICU. The patient rooms in this unit are maintained at a negative pressure with supply air changes ranging from 7 to 9 air changes per hour (+/- 10%).

Figure 8. ICU 3 Visitor Hallway Sampler Locations



Four samplers were placed outside of patient rooms in the family and visitor corridor of the ICU. The patient rooms in this unit are maintained at a negative pressure with supply air changes ranging from 7 to 9 air changes per hour (+/- 10%).

Figure 9. ICU 4 Nursing Station Sampler Locations



Four samplers were placed outside of patient rooms in the nursing station of the ICU. The patient rooms in this unit are maintained at a neutral pressure with supply air changes around 8.5 air changes per hour ($\pm 10\%$) for a typical room.