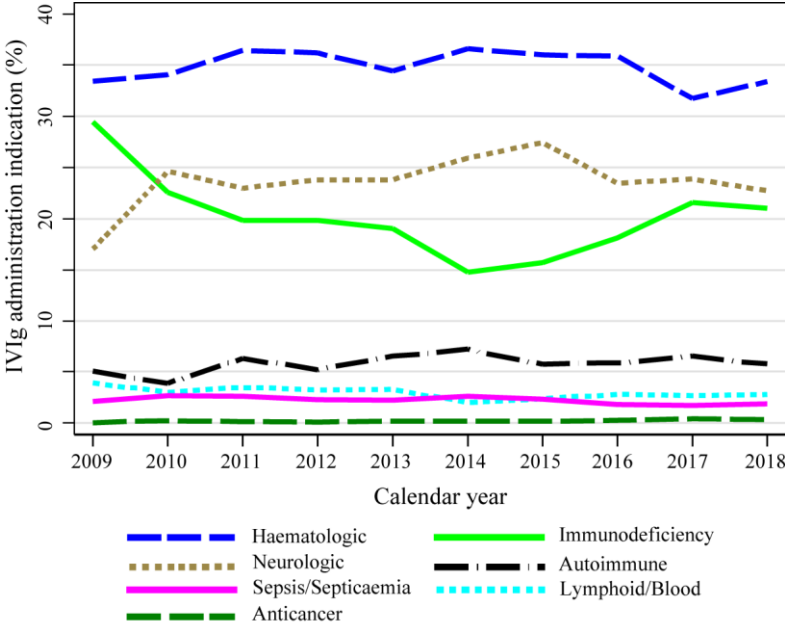


**Supporting information, Figure S1:**

**Proportion of indications for first IVIg administration by calendar year**



IVIg: Intravenous immunoglobulin

**Supporting information, Table S1:**

**Association between age in adults and first anaphylactic events following IVIg administrations, calendar period 2009-2018.**

	<b>Anaphylactic events</b>	<b>IVIg administrations</b>	<b>IR per 10,000 IVIg administrations (0.95-CI)</b>	<b>Crude IRR<sup>1</sup> (0.95-CI)</b>	<b>Adjusted IRR<sup>1,2</sup> (0.95-CI)</b>
<b>Total IVIg administrations</b>	89	155909	5.71 (4.58-7.03)		
<b>Predictors</b>					
<b>Age [years]</b>					
18-39	16	20398	7.84 (4.48-12.74)	1	1
40-59	29	47983	6.04 (4.04-8.68)	0.77 (0.42-1.43)	0.92 (0.49-1.70)
60-74	28	58210	4.81 (3.19-6.96)	0.61 (0.33-1.14)	0.81 (0.43-1.52)
≥75 or unknown	16	29318	5.46 (3.11-8.87)	0.70 (0.35-1.40)	0.78 (0.38-1.61)

CI: Confidence interval; IR: Incidence rate; IRR: Incidence rate ratio; IVIg: Intravenous immunoglobulin.

<sup>1</sup>: Estimated from Poisson regression models clustering for patients.

<sup>2</sup>: IRR estimates adjusted for age, sex, race, sequence of IVIg treatment, hospital setting, transfusion of blood components, IVIg indication dose group and calendar period.