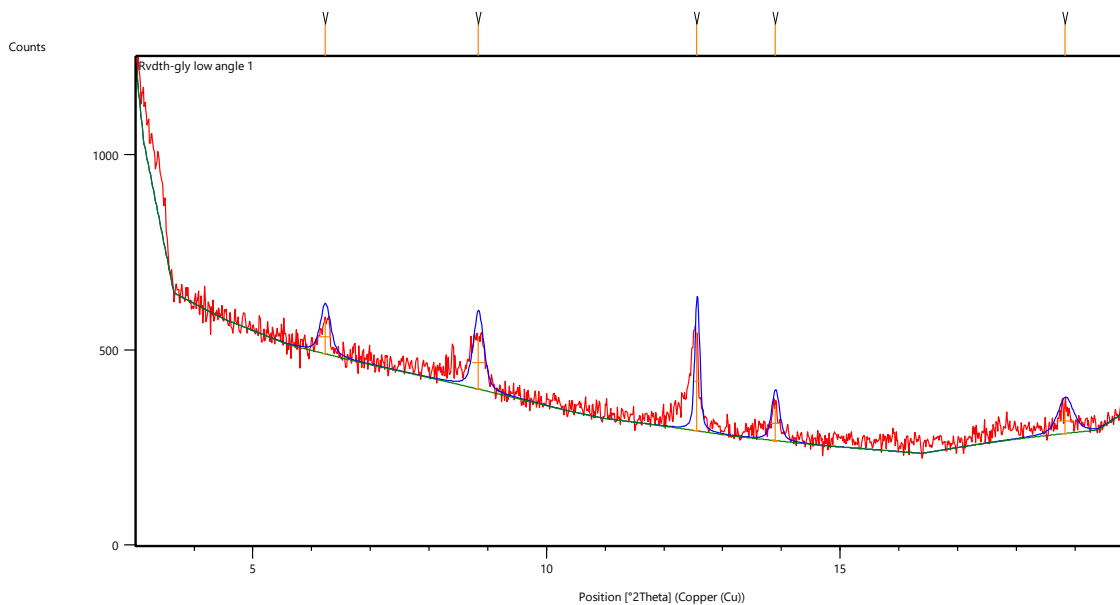


Measurement Conditions: (Bookmark 1)

Dataset Name Rvdth-gly low angle 1
File name I:\xrd methodsx slide\Rvdth-gly low angle 1.xrdml
Comment Configuration=Multi Purpose Sample Stage, Owner=User-1,
Creation date=3/27/2015 3:44:05 PM
Goniometer=PW3050/60 (Theta/Theta); Minimum step size
2Theta:0.001; Minimum step size Omega:0.001
Sample stage=Multi purpose sample stage; Minimum step size
Phi:2.5
Diffractometer system=XPERT-3
Measurement program=C:\PANalytical\Data
Collector\Programs\Clay Analysis_MPSS_Low Angle scan.xrdmp, Identifier={A7C708CA-
5A80-4640-A857-D9660517B47F}
Measurement Date / Time 31-05-2021 18:42:34
Operator User
Raw Data Origin XRD measurement (*.XRDML)
Scan Axis Gonio
Start Position [$^{\circ}$ 2Th.] 3.0066
End Position [$^{\circ}$ 2Th.] 19.9846
Step Size [$^{\circ}$ 2Th.] 0.0130
Scan Step Time [s] 48.1950
Scan Type Continuous
PSD Mode Scanning
PSD Length [$^{\circ}$ 2Th.] 3.35
Offset [$^{\circ}$ 2Th.] 0.0000
Divergence Slit Type Fixed
Divergence Slit Size [$^{\circ}$] 0.1089
Specimen Length [mm] 10.00
Measurement Temperature [$^{\circ}$ C] 25.00
Anode Material Cu
K-Alpha1 [\AA] 1.54060
K-Alpha2 [\AA] 1.54443
K-Beta [\AA] 1.39225
K-A2 / K-A1 Ratio 0.50000
Generator Settings 40 mA, 45 kV
Diffractometer Type 0000000011166139
Diffractometer Number 0
Goniometer Radius [mm] 240.00
Dist. Focus-Diverg. Slit [mm] 100.00
Incident Beam Monochromator No
Spinning No

Main Graphics, Analyze View: (Bookmark 2)



Peak List: (Bookmark 3)

Pos. [°2Th.]	Height [cts]	FWHM Left [°2Th.]	d-spacing [Å]	Rel. Int. [%]
6.2326	87.34	0.2047	14.18141	34.56
8.8370	136.08	0.2047	10.00679	53.84
12.5587	252.75	0.0895	7.04853	100.00
13.8923	90.94	0.1535	6.37474	35.98
18.8260	63.14	0.3070	4.71378	24.98

Insert Measurement:

- File name = "Rvdth-gly low angle 1.xrdml"
- Modification time = "03-06-2021 22:57:44"
- Modification editor = "GM"

Default properties:

- Measurement step axis = "None"
- Internal wavelengths used from anode material: Copper (Cu)
- Original K-Alpha1 wavelength = "1.54060"
- Used K-Alpha1 wavelength = "1.54060"
- Original K-Alpha2 wavelength = "1.54443"
- Used K-Alpha2 wavelength = "1.54443"
- Original K-Beta wavelength = "1.39225"
- Used K-Beta wavelength = "1.39225"
- Irradiated length = "10.00000"
- Spinner used = "No"
- Receiving slit size = "0.10000"
- Step axis value = "0.00000"
- Offset = "0.00000"