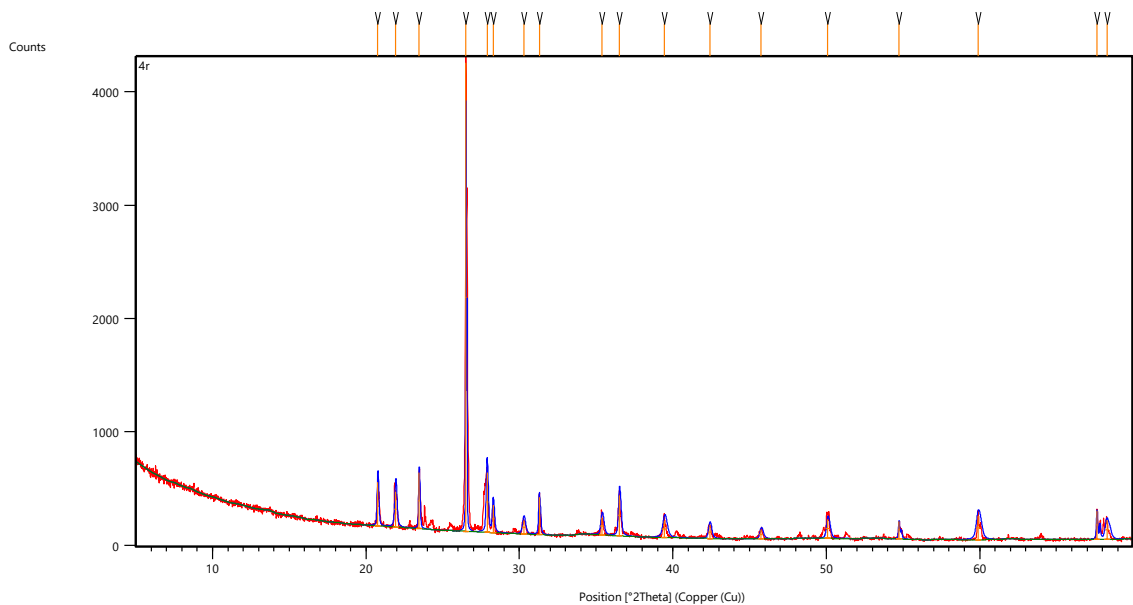


Measurement Conditions: (Bookmark 1)

Dataset Name 4v
File name F:\Phd\XRD\varnish\4r.xrdml
Comment Configuration=Multi Purpose Sample Stage, Owner=User-1,
Creation date=3/27/2015 3:44:05 PM
Goniometer=PW3050/60 (Theta/Theta); Minimum step size
2Theta:0.001; Minimum step size Omega:0.001
Sample stage=Multi purpose sample stage; Minimum step size
Phi:2.5
Diffractometer system=XPERT-3
Measurement program=C:\PANalytical\Data
Collector\Programs\Bulk Powder_BBHD_MPPS_1D.xrdmp, Identifier={0DD3DEF2-8437-
461E-AC19-19C3A3EF6485}
MPSS stage
Measurement Date / Time 07-11-2019 14:41:41
Operator User
Raw Data Origin XRD measurement (*.XRDML)
Scan Axis Gonio
Start Position [$^{\circ}2\text{Th.}$] 5.0116
End Position [$^{\circ}2\text{Th.}$] 69.9856
Step Size [$^{\circ}2\text{Th.}$] 0.0130
Scan Step Time [s] 32.8950
Scan Type Continuous
PSD Mode Scanning
PSD Length [$^{\circ}2\text{Th.}$] 3.35
Offset [$^{\circ}2\text{Th.}$] 0.0000
Divergence Slit Type Fixed
Divergence Slit Size [$^{\circ}$] 0.2177
Specimen Length [mm] 10.00
Measurement Temperature [$^{\circ}\text{C}$] 25.00
Anode Material Cu
K-Alpha1 [\AA] 1.54060
K-Alpha2 [\AA] 1.54443
K-Beta [\AA] 1.39225
K-A2 / K-A1 Ratio 0.50000
Generator Settings 30 mA, 40 kV
Diffractometer Type 0000000011166139
Diffractometer Number 0
Goniometer Radius [mm] 240.00
Dist. Focus-Diverg. Slit [mm] 100.00
Incident Beam Monochromator No
Spinning No

Main Graphics, Analyze View: (Bookmark 2)



Peak List: (Bookmark 3)

Pos. [°2Th.]	Height [cts]	FWHM Left [°2Th.]	d-spacing [Å]	Rel. Int. [%]
20.7696	383.01	0.1023	4.27684	9.26
21.9330	311.76	0.1535	4.05255	7.54
23.4721	494.06	0.0768	3.79019	11.95
26.5096	4134.60	0.0384	3.36240	100.00
27.8921	528.70	0.1279	3.19880	12.79
28.2914	244.84	0.1279	3.15456	5.92
30.2864	119.31	0.2047	2.95116	2.89
31.2943	330.99	0.1023	2.85837	8.01
35.3859	150.75	0.2047	2.53668	3.65
36.5157	359.24	0.1535	2.46075	8.69
39.4637	147.16	0.3070	2.28346	3.56
42.4001	117.52	0.2047	2.13187	2.84
45.7515	81.89	0.2047	1.98320	1.98
50.1018	167.03	0.2047	1.82072	4.04
54.7500	157.10	0.1023	1.67664	3.80
59.8994	211.69	0.3070	1.54422	5.12
67.6538	258.49	0.0936	1.38372	6.25
68.2875	169.33	0.2558	1.37356	4.10

