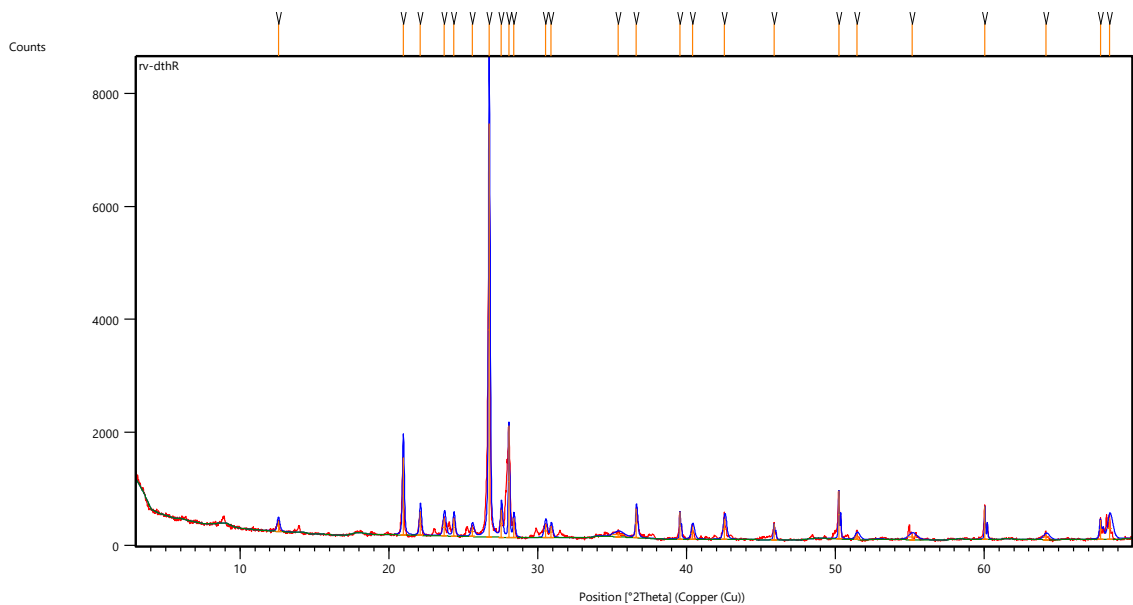


Measurement Conditions: (Bookmark 1)

Dataset Name	RVlayer reduced
File name	F:\Phd\method\rv-dthR.xrdml
Comment	Configuration=Multi Purpose Sample Stage, Owner=User-1,
Creation date=3/27/2015 3:44:05 PM	Goniometer=PW3050/60 (Theta/Theta); Minimum step size
2Theta:0.001; Minimum step size	Omega:0.001
Phi:2.5	Sample stage=Multi purpose sample stage; Minimum step size
	Diffractometer system=XPERT-3
	Measurement program=C:\PANalytical\Data
Collector\Programs\Bulk Powder_BBHD_MPPS_1D.xrdmp, Identifier={FA755B84-DF04-41AA-8AD7-C4E850FAC733}	MPSS stage
Measurement Date / Time	12-03-2021 13:21:15
Operator	User
Raw Data Origin	XRD measurement (*.XRDML)
Scan Axis	Gonio
Start Position [°2Th.]	3.0066
End Position [°2Th.]	69.9956
Step Size [°2Th.]	0.0130
Scan Step Time [s]	29.0700
Scan Type	Continuous
PSD Mode	Scanning
PSD Length [°2Th.]	3.35
Offset [°2Th.]	0.0000
Divergence Slit Type	Fixed
Divergence Slit Size [°]	0.2177
Specimen Length [mm]	10.00
Measurement Temperature [°C]	25.00
Anode Material	Cu
K-Alpha1 [Å]	1.54060
K-Alpha2 [Å]	1.54443
K-Beta [Å]	1.39225
K-A2 / K-A1 Ratio	0.50000
Generator Settings	30 mA, 40 kV
Diffraction Type	0000000011166139
Diffraction Number	0
Goniometer Radius [mm]	240.00
Dist. Focus-Diverg. Slit [mm]	100.00
Incident Beam Monochromator	No
Spinning	No

Main Graphics, Analyze View: (Bookmark 2)



Peak List: (Bookmark 3)

Pos. [°2Th.]	Height [cts]	FWHM Left [°2Th.]	d-spacing [Å]	Rel. Int. [%]
12.5722	177.00	0.2047	7.04098	2.42
20.9613	1374.31	0.1151	4.23816	18.76
22.1107	422.94	0.1407	4.02038	5.77
23.7258	317.68	0.2047	3.75022	4.34
24.3652	320.67	0.1535	3.65325	4.38
25.6107	180.09	0.2047	3.47834	2.46
26.7288	7325.29	0.1023	3.33532	100.00
27.5575	484.74	0.1535	3.23687	6.62
28.0552	1984.30	0.0640	3.18057	27.09
28.4008	346.44	0.1279	3.14265	4.73
30.5263	239.47	0.2047	2.92850	3.27
30.9083	204.59	0.1535	2.89318	2.79
35.4047	71.06	0.8187	2.53538	0.97
36.6294	519.06	0.1279	2.45337	7.09
39.5600	482.87	0.0768	2.27812	6.59
40.3982	225.65	0.2047	2.23276	3.08
42.5576	367.05	0.2047	2.12434	5.01
45.8771	292.47	0.1023	1.97806	3.99
50.2317	857.91	0.0768	1.81632	11.71
51.4406	102.62	0.3070	1.77644	1.40
55.1443	87.29	0.6140	1.66558	1.19
60.0496	591.08	0.0768	1.54072	8.07
64.1316	90.26	0.4093	1.45215	1.23
67.8101	340.19	0.1535	1.38206	4.64
68.4210	387.45	0.3070	1.37120	5.29