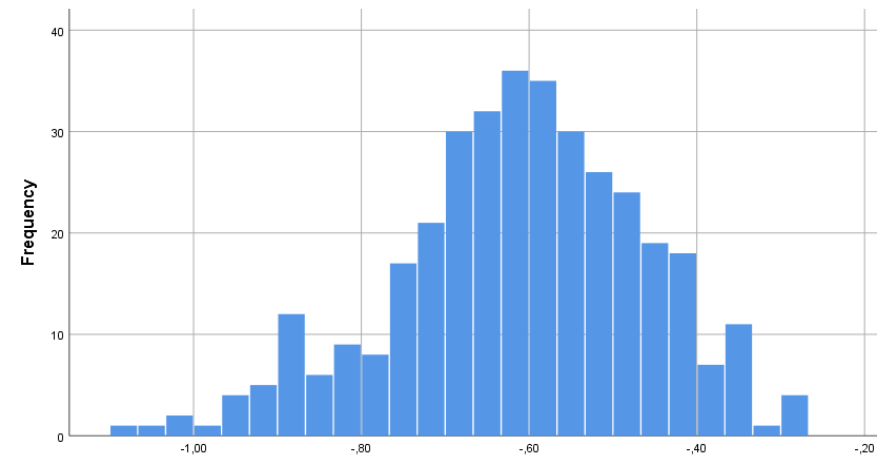
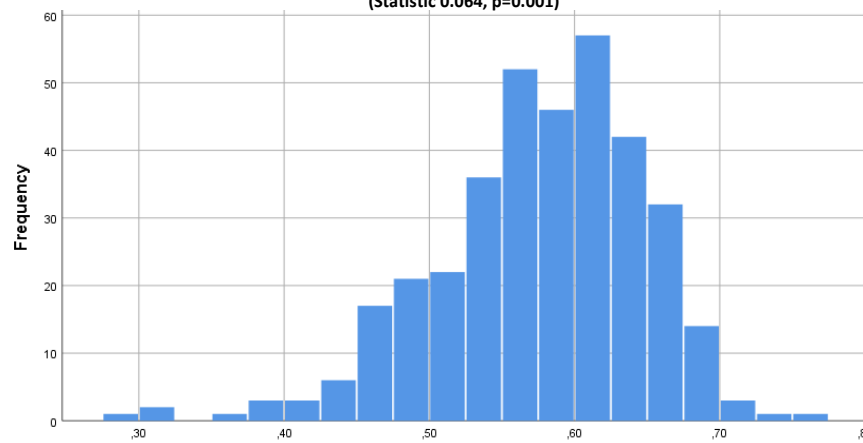


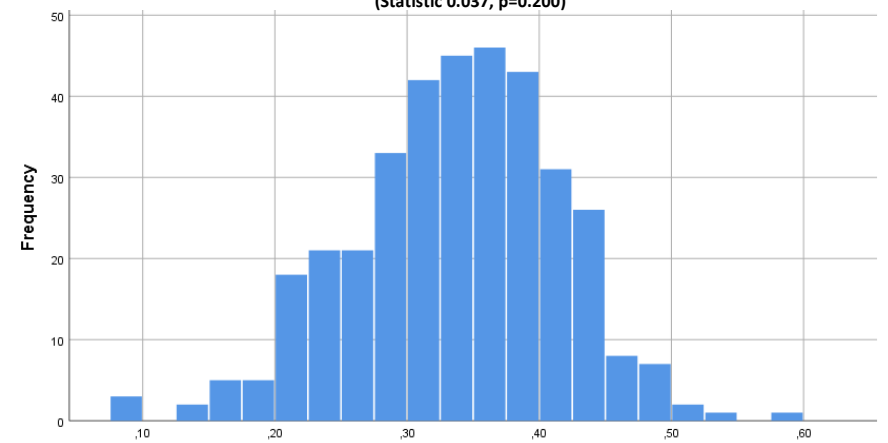
Original static FC (cerebellum - DMN)
(Statistic 0.064, $p=0.001$)



Transformed static FC (cerebellum - DMN)
(Statistic 0.037, $p=0.200$)



Original dynamic FC (cerebellum - DMN)
(Statistic 0.066, $p=0.001$)



Transformed dynamic FC (cerebellum - DMN)
(Statistic 0.044, $p=0.095$)

Supplementary Figure: Histograms of static and dynamic functional connectivity (FC) before (left) and after (right) transformations to ensure normal distributions. For illustrative purposes only cerebellar connections with the default-mode network (DMN) are shown. Static connectivity was transformed using $\log_{10}(x)$, due to the observed right-tailed distribution. Dynamic connectivity was transformed using x^2 , due to the observed left-tailed distribution. Statistics represent the Kolmogorov-Smirnov test for normal distributions; significance indicates a non-normal distribution.