

Supplementary material S5

Distribution of residuals

This document illustrates distribution of normalised denoising residuals (i.e. denoising output – denoising input, normalised by the estimated noise σ). Distributions are plotted in the semi-log scales against the squared residuals. In this plot, a Gaussian distribution appears as a straight line of slope $-\frac{1}{2}$ (labelled as “Reference” in the legends).

The document reports distributions from both simulated and in vivo scans.

Simulations

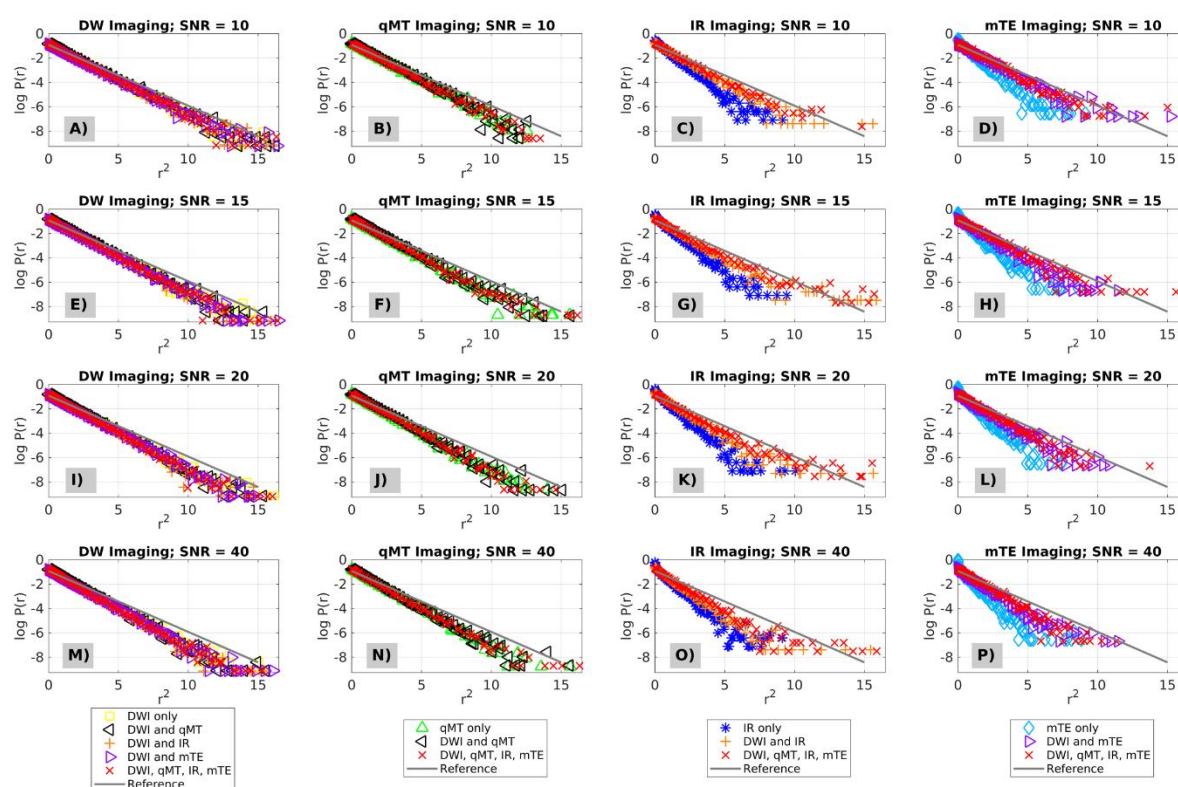


Fig. S5.1. Examples of distributions of residuals from simulations (Gaussian noise).

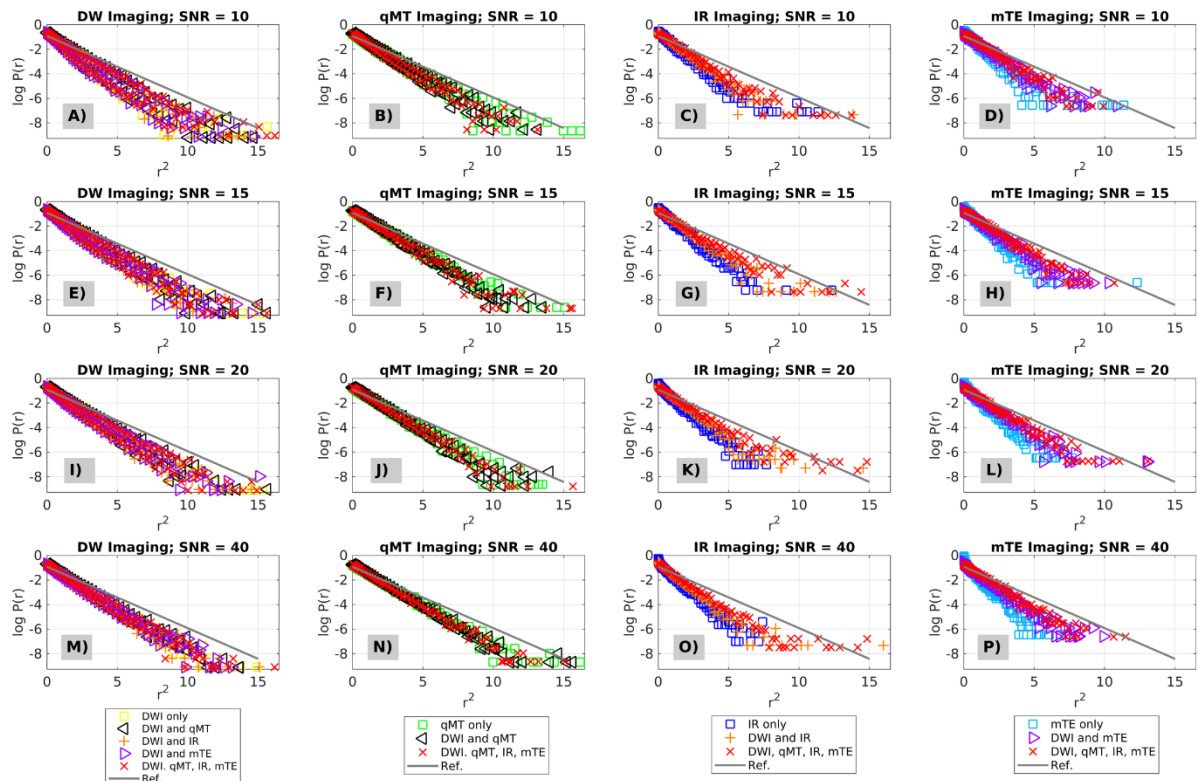


Fig. S5.2. Examples of distributions of residuals from simulations (Rician noise).

In vivo

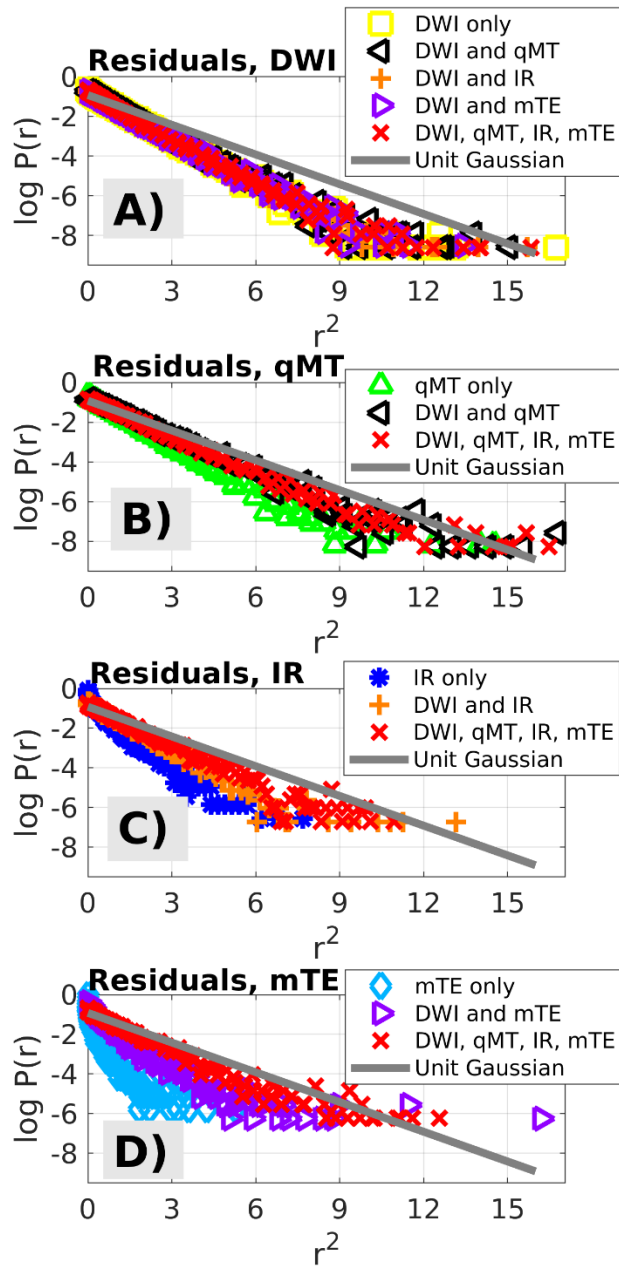


Fig. S5.3. Examples of distributions of residuals from in vivo data (vendor 1, London).

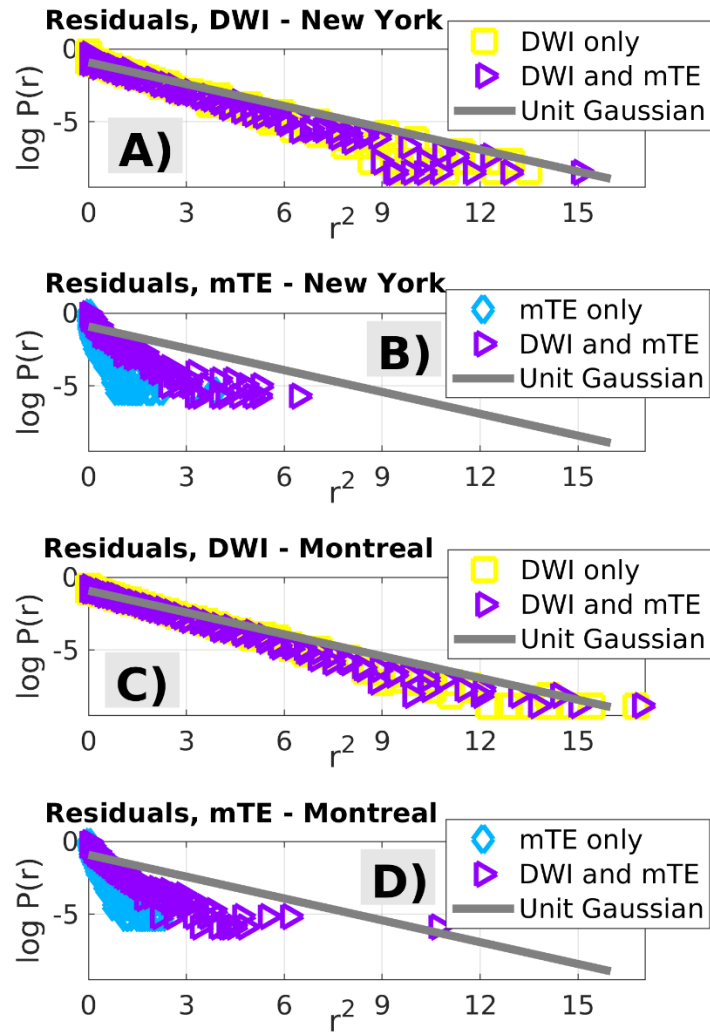


Fig. S5.4. Examples of distributions of residuals from in vivo data (vendor 2, two scanners – New York City and Montreal).