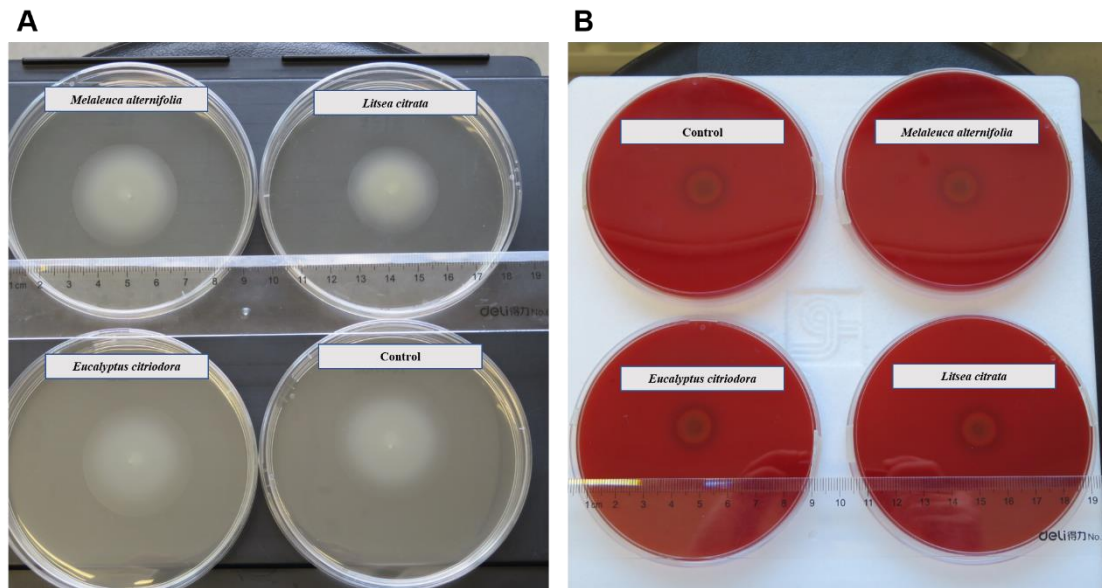


Supplementary information 3:



Effect of *Melaleuca alternifolia* (0.0008%), *Litsea citrata* (0.002%) and *Eucalyptus citriodora* (0.0005%) on swimming motility of *V. campbellii* on soft LB₃₅ agar after 24 h of incubation at 28 °C (A) and hemolytic assay of *V. campbellii* on LB₃₅ agar supplemented with 5% defibrinated sheep blood after 48h of incubation at 28 °C (B). Control: no EO added but consisted of 1% of DMSO.