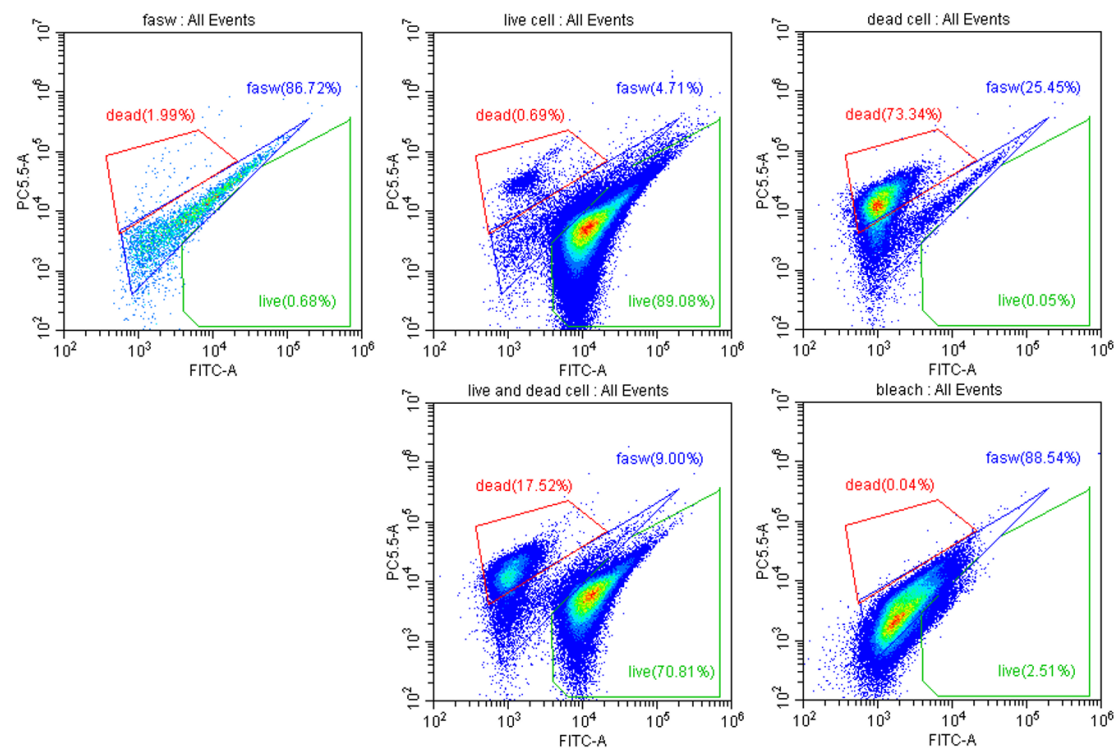


Supplementary information 4:



Percentage of live and dead cells of *V. campbellii* obtained from flow cytometry staining with Thiazole Orange and Propidium Iodide. The first line from left to right was FASW sample, live cells sample and dead cells sample treated with 95 °C hot water bath for 20 mins and frozen in -80 °C for 10 mins, the second line from left to right was mixture of 50% of the live cells and 50% of the dead cells sample, the dead cells treated with bleach for 10 mins. The Plot of live cells was in the green frame, dead cells was in the red frame, and damage cell or other was in the blue frame.