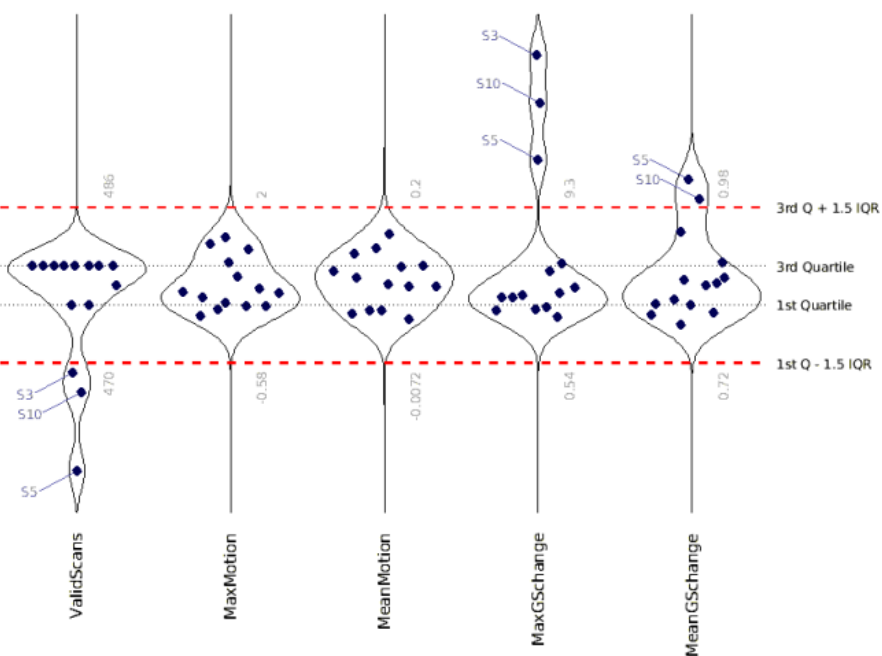
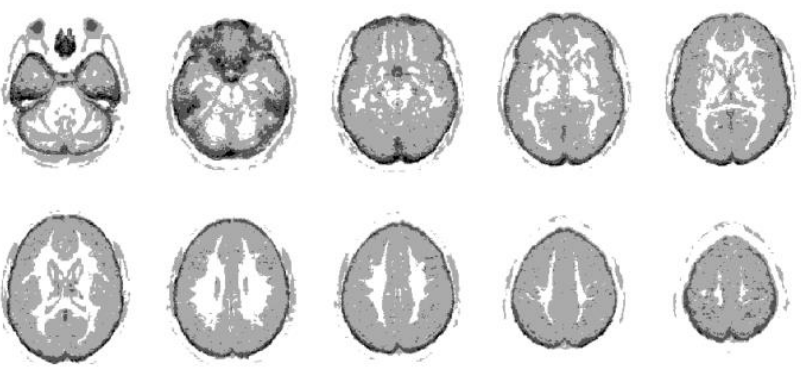


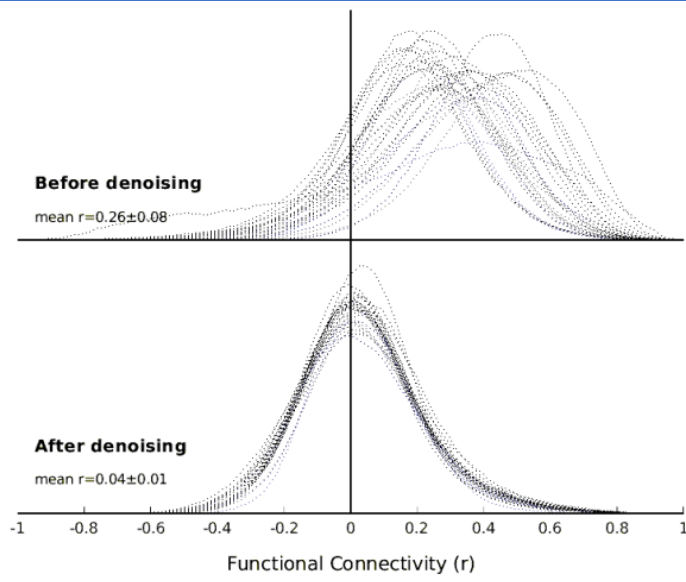
# Quality Control and Assurance



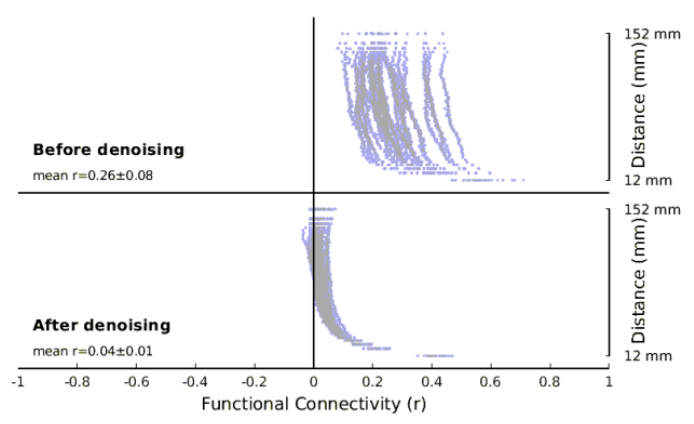
▲ Violin plots of the number of valid scans (*ValidScans*), mean and maximum motion (*MeanMotion*, *MaxMotion*), and mean and maximum global signal change (*MeanGSChange*, *MaxGSChange*) across all subjects. Outliers are annotated by subject ID; confidence intervals ( $\pm 1.5 \times IQR$ ) are denoted by red dashed lines.



▲ Variability of registrations across all subjects following DARTEL registration versus outline of MNI-space grey matter template (*greyscale*).



▲ Distribution of functional connectivity ( $r$ ) across all subjects before and after denoising workflow.



▲ Average functional connectivity ( $r$ ) per voxel versus distance from the voxel, across all subjects, before and after denoising workflow.