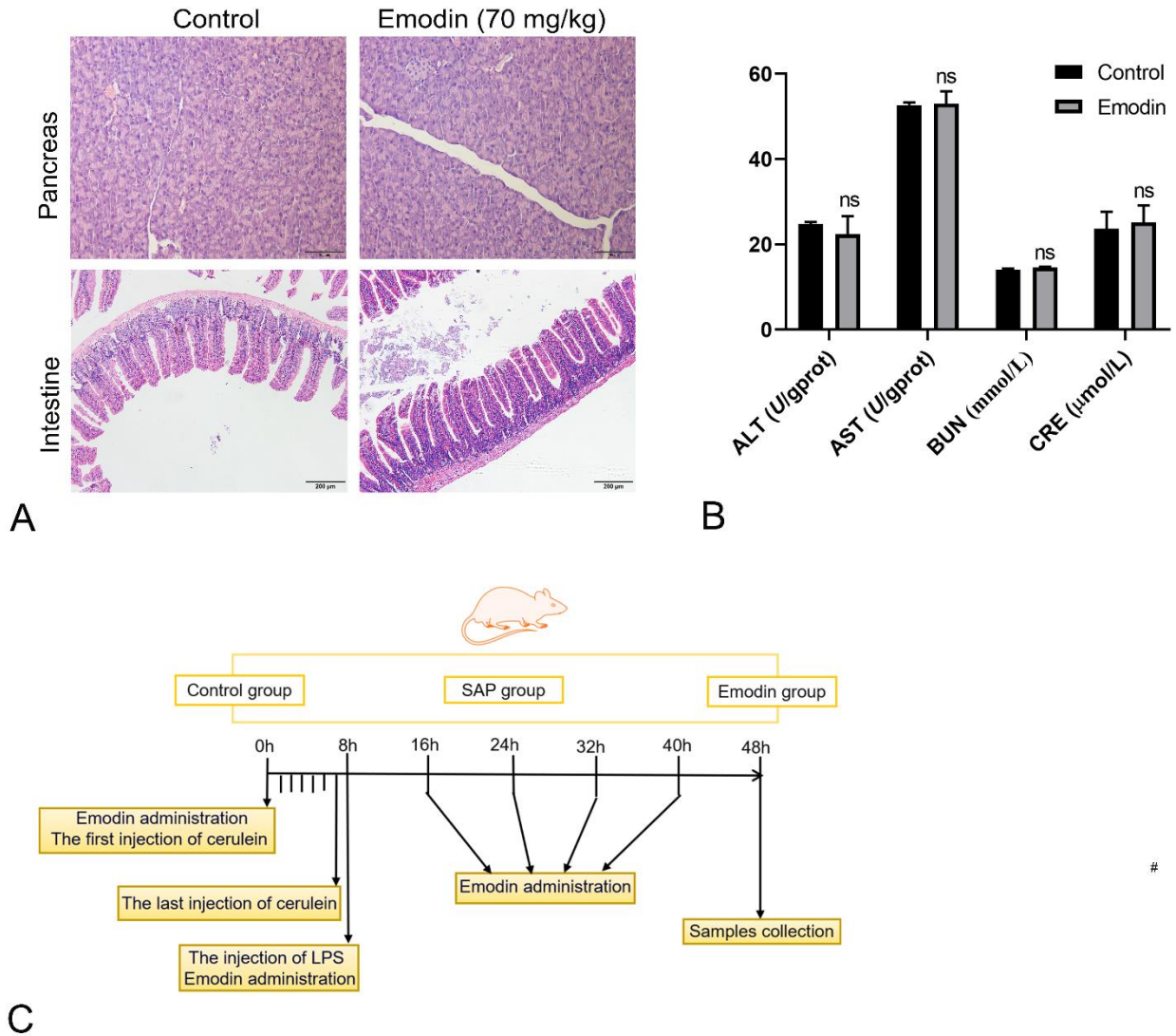


Emodin Alleviates Intestinal Barrier Dysfunction by Inhibiting Apoptosis and Regulating the Immune Response in Severe Acute Pancreatitis

SUPPLEMENTAL DIGITAL CONTENT



SUPPLEMENTAL FIGURE 1. Toxicology evaluation of emodin. A, HE staining for intestine and pancreas. B, Evaluation of the hepatotoxicity and nephrotoxicity of each treatment by measuring the serum levels of amylase and creatinine, aspartate aminotransferase, alanine aminotransferase, and urea nitrogen. C, Schematic diagram of experimental design.