

S5 Fig (page 1)

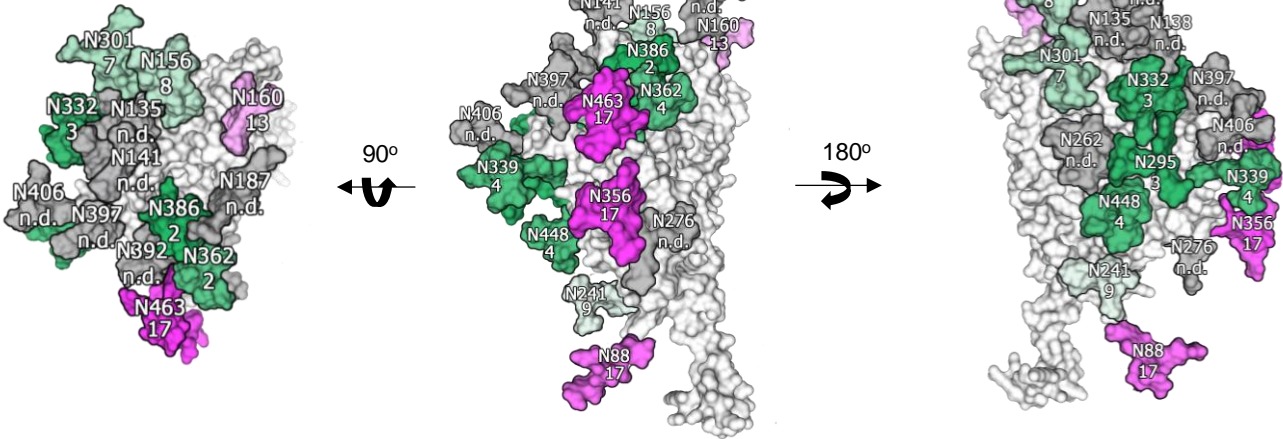
JR-FL gp120

Apex view

LHS

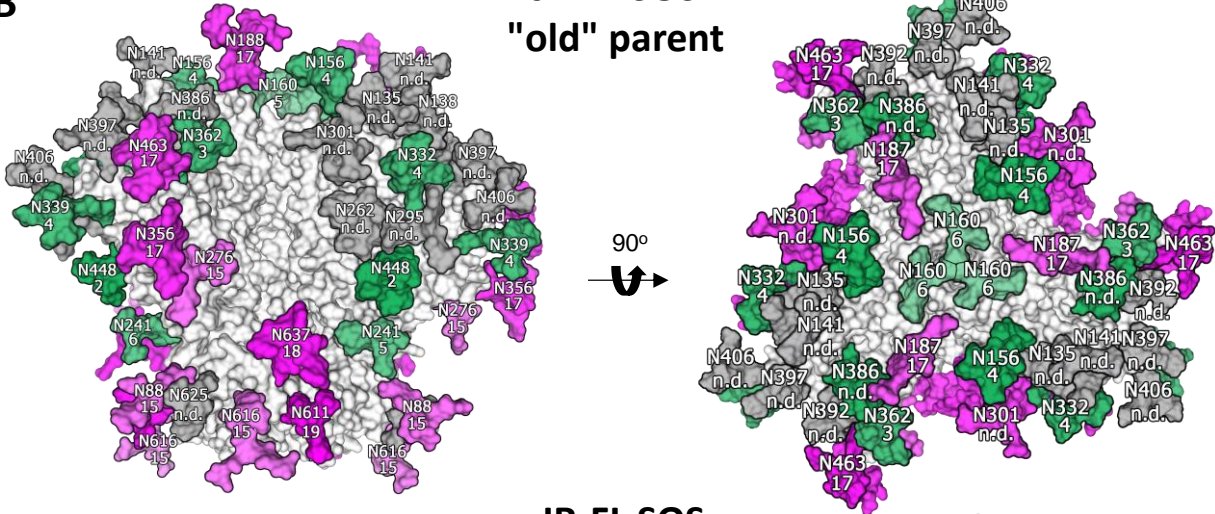
RHS

A



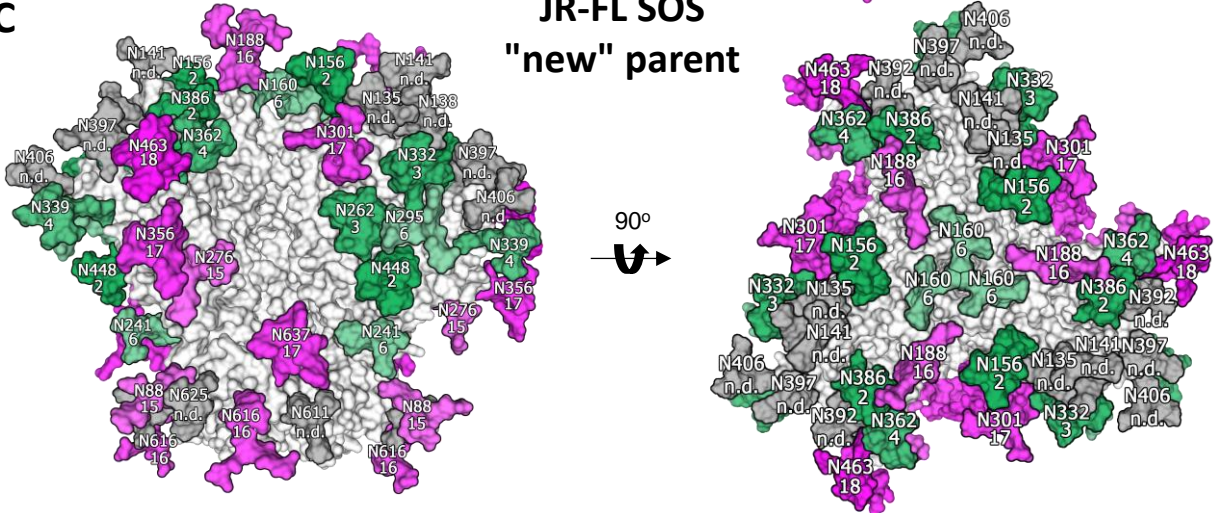
B

JR-FL SOS
"old" parent



C

JR-FL SOS
"new" parent

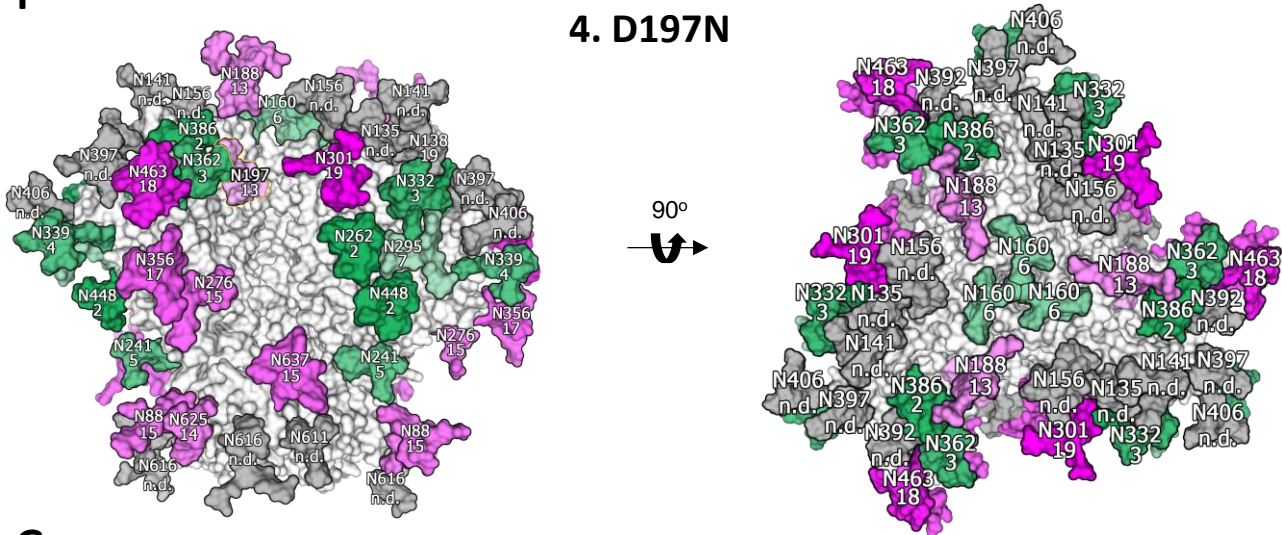


1	2	3	4	5	6	7	8	9	10	11	12	13	14	15	16	17	18	19
M9Glc	M9	M8	M7	M6	M5	M4	M3	FM	HYBRID	FHYBRID	HexNAc(3)(x)	HexNAc(3)(F)(x)	HexNAc(4)(x)	HexNAc(4)(F)(x)	HexNAc(5)(x)	HexNAc(5)(F)(x)	HexNAc(6+)(x)	HexNAc(6+)(F)(x)

D197N knock in

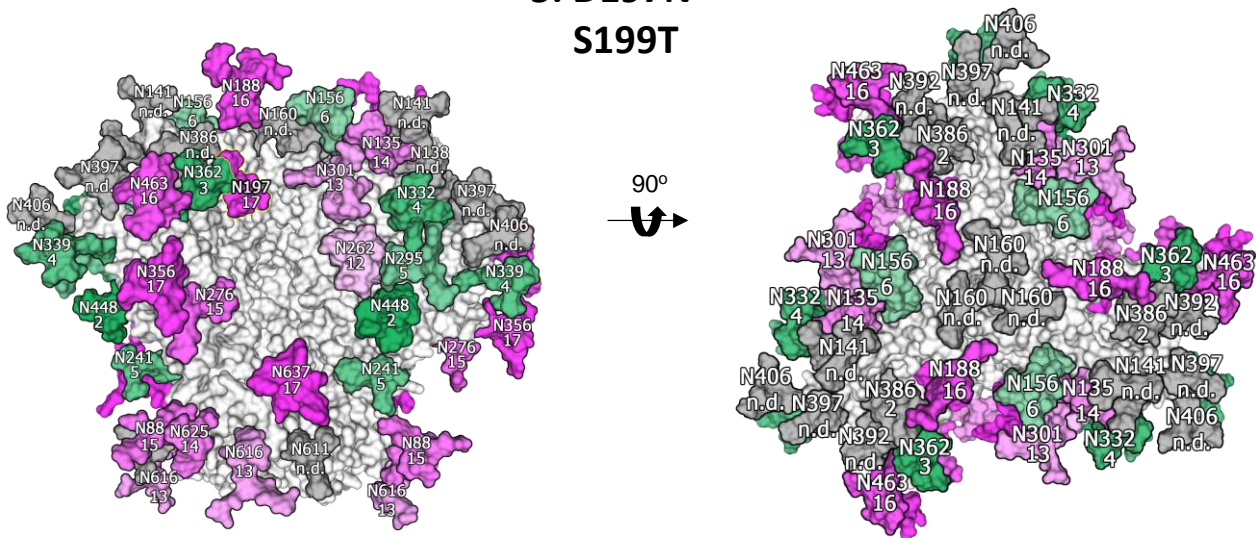
F

4. D197N



G

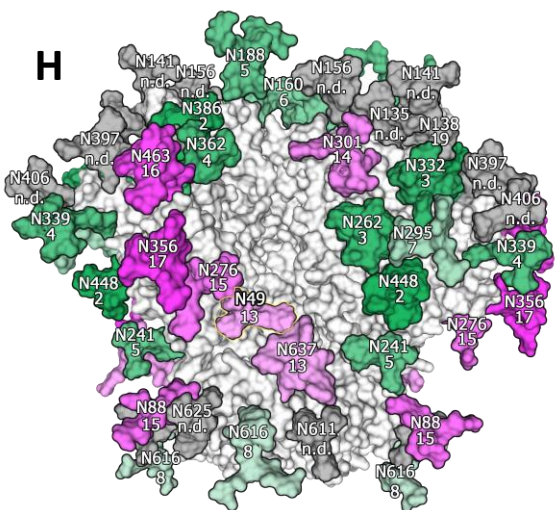
5. D197N + S199T



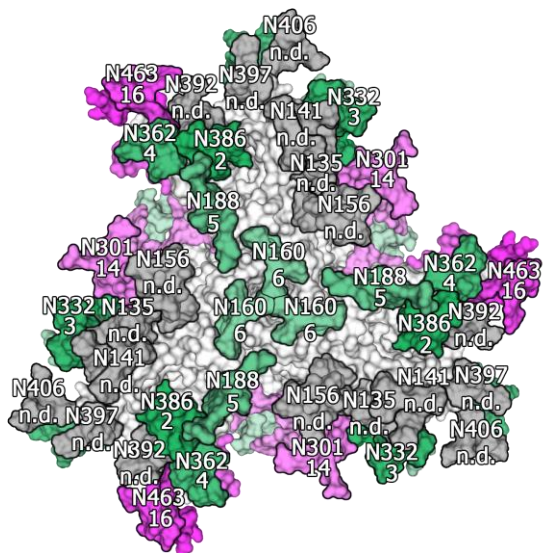
1	2	3	4	5	6	7	8	9	10	11	12	13	14	15	16	17	18	19
M9Glc	M9	M8	M7	M6	M5	M4	M3	FM	HYBRID	FHYBRID	HexNAc(3)(x)	HexNAc(3)(F)(x)	HexNAc(4)(x)	HexNAc(4)(F)(x)	HexNAc(5)(x)	HexNAc(5)(F)(x)	HexNAc(6+)(x)	HexNAc(6+)(F)(x)

T49N and N611Q

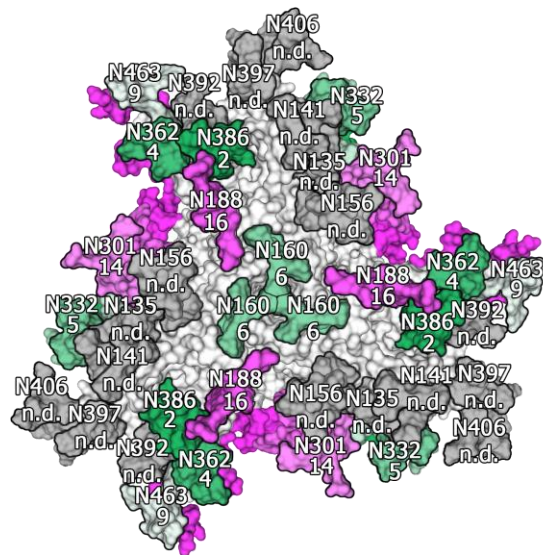
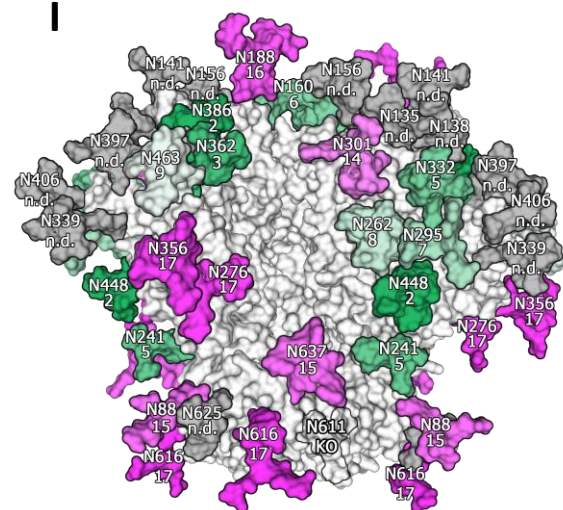
H



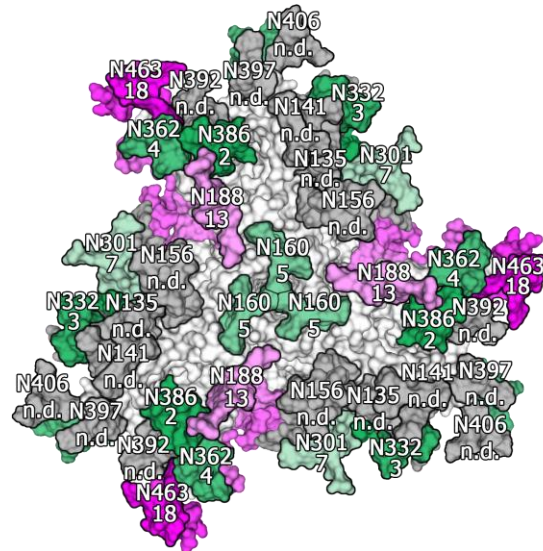
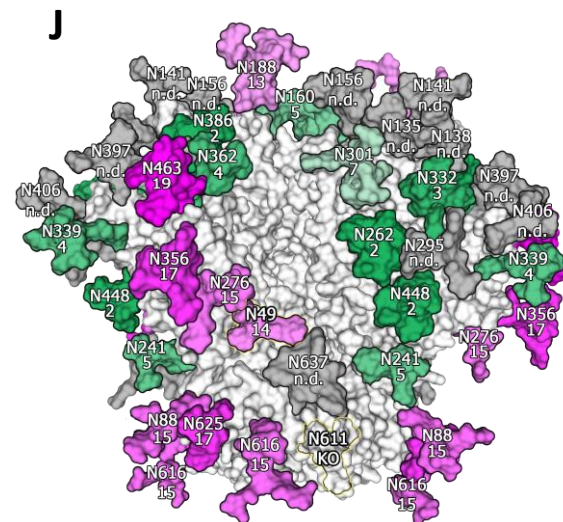
6. T49N



7. N611Q

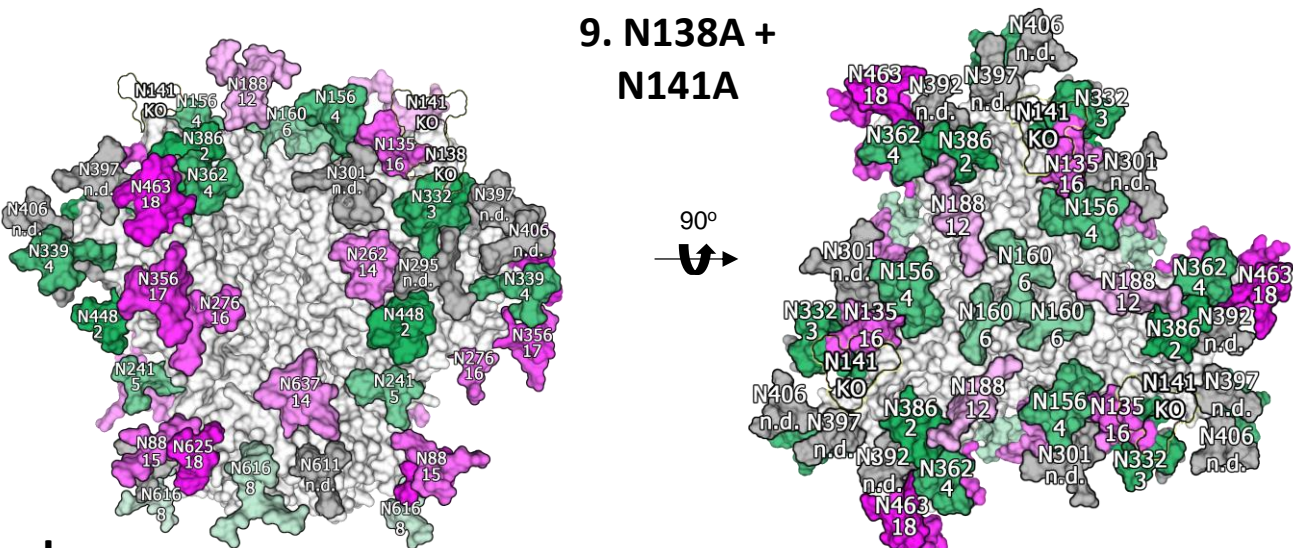


8. T49N + N611Q

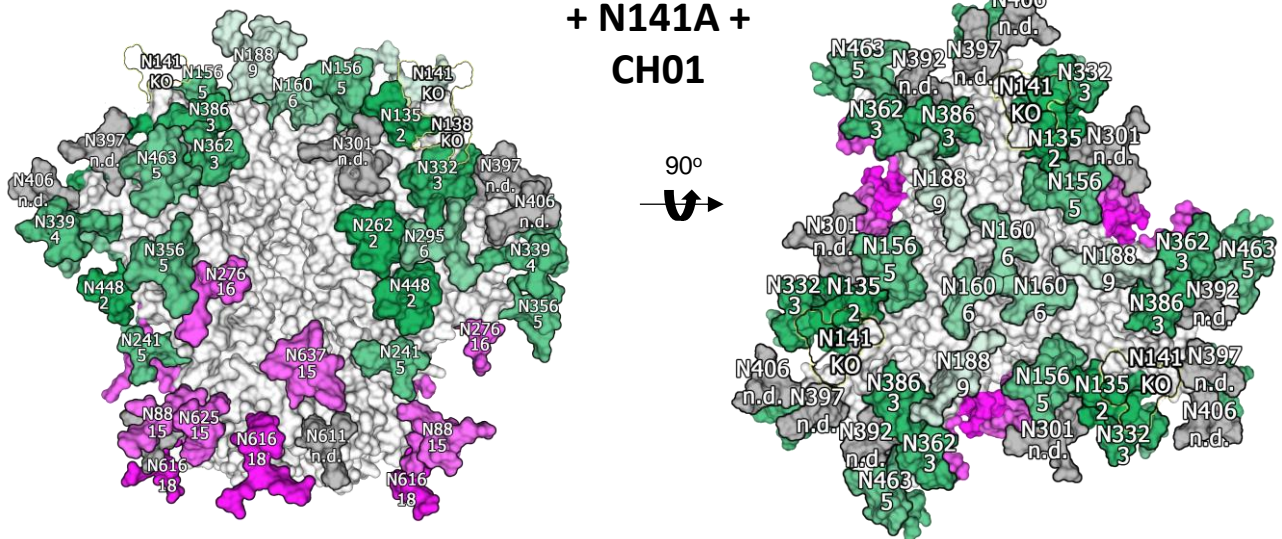


K CH01-bound glycovariants

9. N138A + N141A



10. N138A + N141A + CH01



1	2	3	4	5	6	7	8	9	10	11	12	13	14	15	16	17	18	19
M9Glc	M9	M8	M7	M6	M5	M4	M3	FM	HYBRID	FHYBRID	HexNAc(3)(x)	HexNAc(3)(F)(x)	HexNAc(4)(x)	HexNAc(4)(F)(x)	HexNAc(5)(x)	HexNAc(5)(F)(x)	HexNAc(6+)(x)	HexNAc(6+)(F)(x)