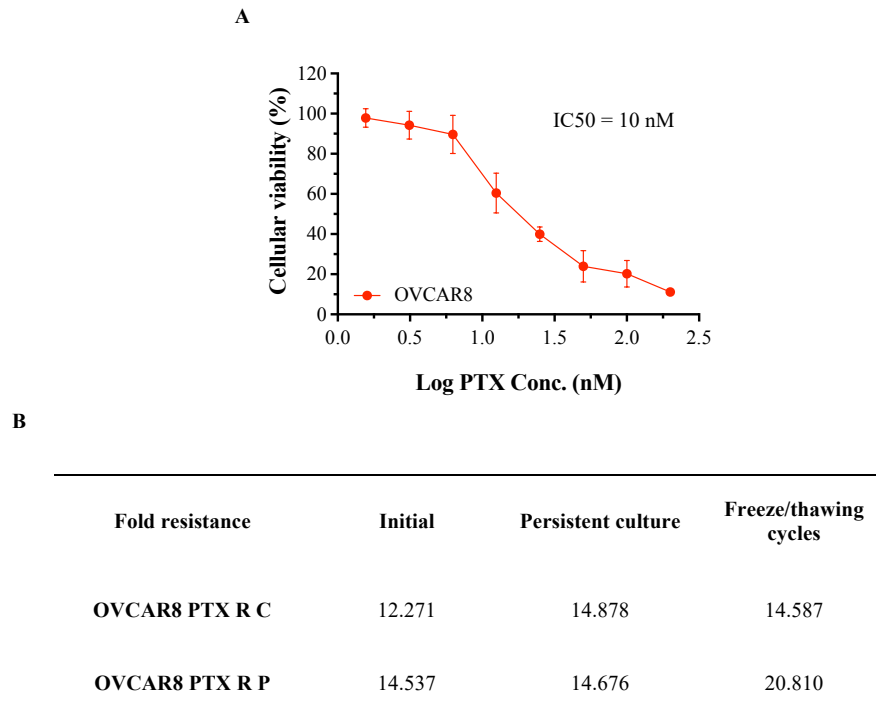
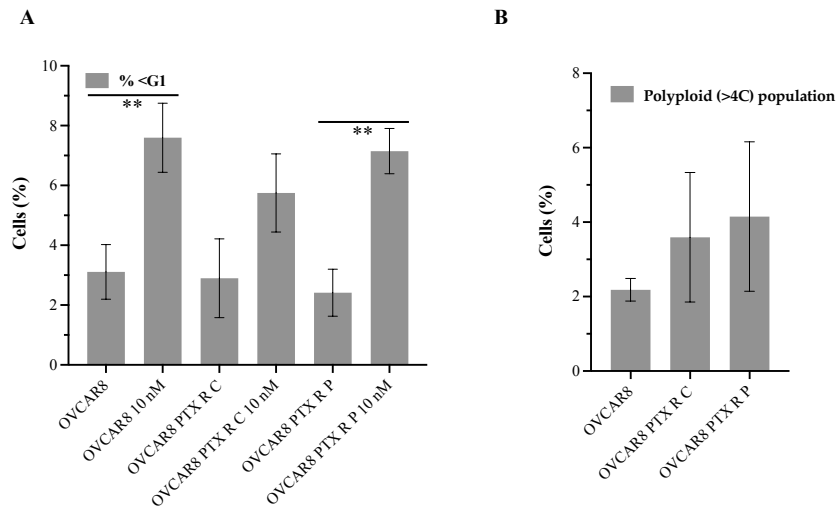


Supplementary Material



Supplementary Figure 1. IC₅₀ and Fold-Resistance for PTX in OVCAR8 and OVCAR8 PTX R cell lines. (A) Line chart showing cell viability and IC₅₀ for PTX in OVCAR8 cells obtained by PB assay after exposure to PTX (1.56 to 200 nM) for 48 hours. (B) Table showing PTX fold-resistance for OVCAR8 PTX R cell lines. All assays were done in triplicate in at least three independent experiments. Data is expressed as mean \pm standard deviation and plotted using GraphPad Prism Software Inc. v6.



Supplementary Figure 2. Proportion of Sub-G1 and polyploid (>4C) populations in OVCAR8 and OVCAR8 PTX R cell lines. (A) Bar chart for cell debris and apoptotic cells (%<G1) of OVCAR8 and OVCAR8 PTX R cell lines using propidium iodide (PI) staining, after exposure to 10 nM PTX during 24 hours. (B) Bar chart showing percentage of polyploid (>4C) populations of OVCAR8 and OVCAR8 PTX R cell lines using propidium iodide (PI) staining. Flow cytometry was performed using BD FACS Canto™ II (BD Biosciences) flow cytometer and data was analyzed by FlowJo software v10.0.7. Assay was done in triplicate in at least three independent experiments. Data is expressed as mean \pm standard deviation and plotted using GraphPad Prism Software Inc. v6. Statistical analysis was performed using ordinary one-way ANOVA followed by two-way ANOVA followed by Turkey's multiple comparison test (A and B) and values of *<math><0.05</math>; **<math><0.001</math>; ***<math><0.0005</math>; ****<math><0.0001</math> as considered statistically significant.