

Supporting Information

Self-Therapeutic Cobalt Hydroxide Nanosheets (Co(OH)₂ NS) for Ovarian Cancer Therapy

Muhammad Adeel^{1,2}, Salvatore Parisi², Matteo Mauceri¹, Kanwal Asif^{1,2}, Michele Bartoletti^{3,4},
Fabio Puglisi^{3,4}, Isabella Caligiuri², Md. Mahbubur Rahman⁵, Vincenzo Canzonieri^{2,6} and Flavio
Rizzolio^{1,2*}

¹*Department of Molecular Sciences and Nanosystems, Ca' Foscari University of Venice, 30123 Venezia, Italy.*

²*Pathology Unit, Centro di Riferimento Oncologico di Aviano (CRO) IRCCS, 33081 Aviano, Italy*

³*Department of Medicine (DAME), University of Udine, 33100, Udine, Italy.*

⁴*Unit of Medical Oncology and Cancer Prevention, Department of Medical Oncology, Centro di Riferimento Oncologico di Aviano (CRO), IRCCS, 33081, Aviano, Italy.*

⁵*Department of Applied Chemistry, Konkuk University, Chungju 27478, South Korea.*

⁶*Department of Medical, Surgical and Health Sciences, University of Trieste, 34127 Trieste, Italy.*

***Corresponding authors**

Flavio Rizzolio PhD

Associate Professor

Department of Molecular Sciences and Nanosystems

Ca' Foscari University of Venice

30123 Venezia, Italy

Email: flavio.rizzolio@unive.it

Phone: (+39)0412348910

Fax: (+39)0434659370

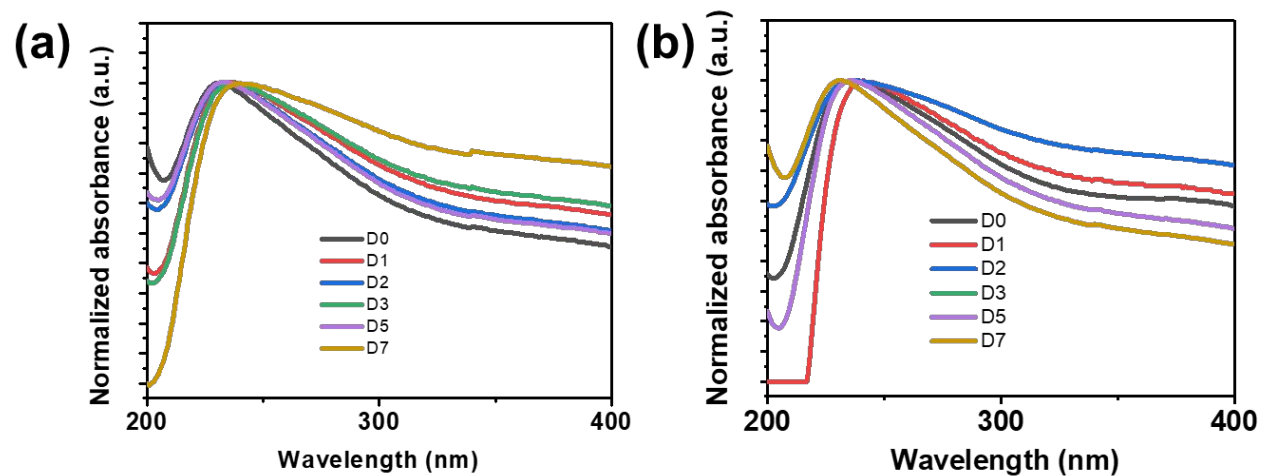


Figure S1. (a) & (b) UV-Vis spectroscopic results of Co(OH)₂ NS at different time points (day zero (D0), day one (D1), day two (D2), day three (D3), day five (D5) and 1 week (D7) in physiological solution with 5% FBS at 37 °C with two different pH 7.4 & pH 5.5, respectively.

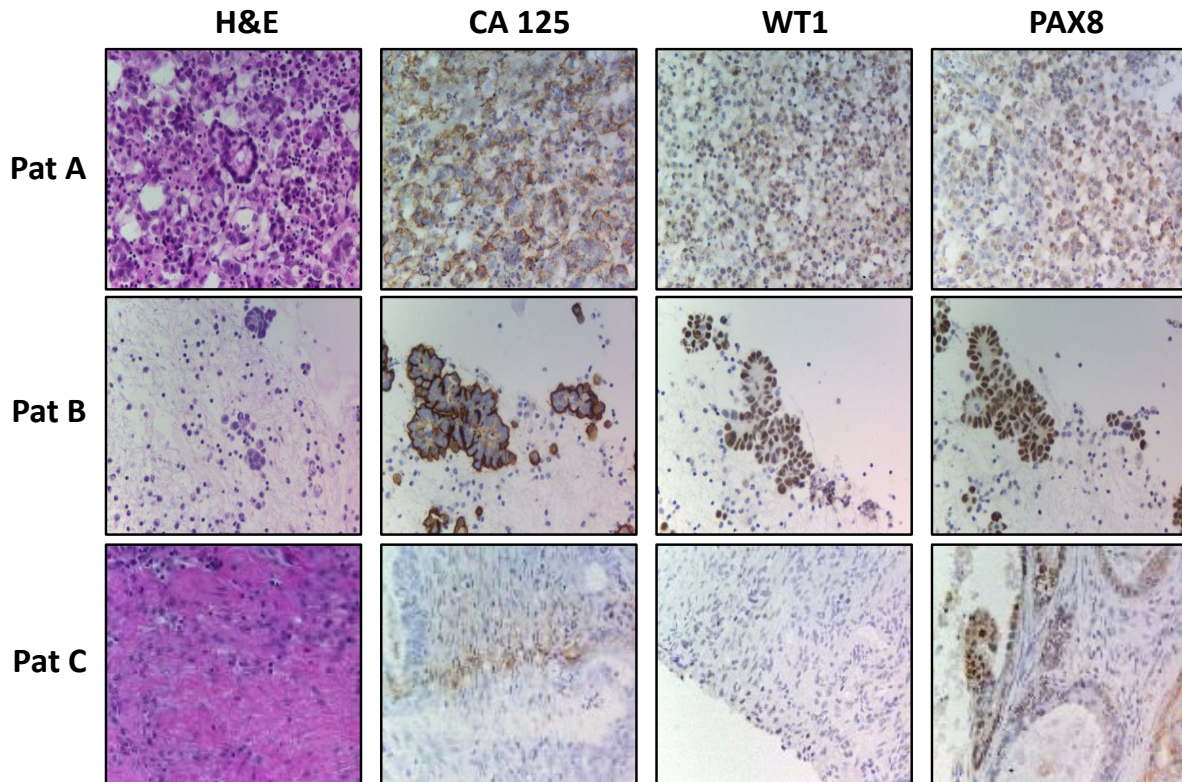


Figure S2. Hematoxylin & eosin staining and immunohistochemistry of ascites derived from HGSOC (Pat A,B) and high grade endometroid tumor human patient (Pat C). CA 125 (cancer antigen 125), WT1 (Wilms' Tumor 1) and PAX8 (Paired box gene 8) are markers of HGSOC. Positive signals were detected in all the ascites. Pat C is negative for WT1 marker.

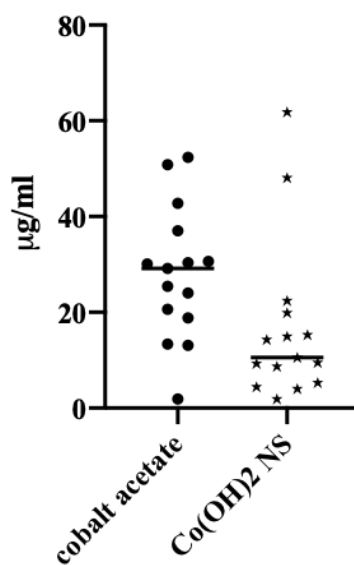


Figure S3. Distribution of IC₅₀ values of cobalt acetate and Co(OH)₂ NS. The line inside the values represent the median value. p-value (<0.05) is calculated with a "Wilcoxon matched-pairs signed rank test".