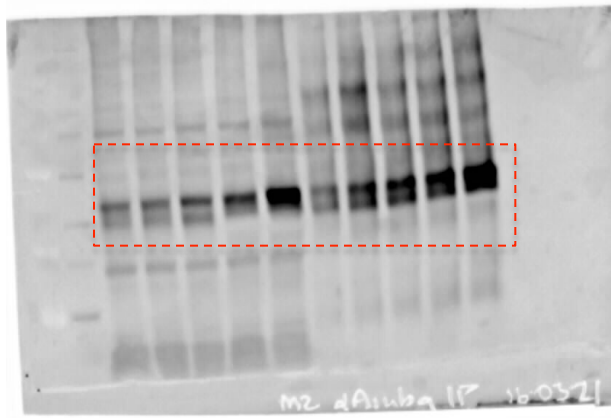


a)



b)

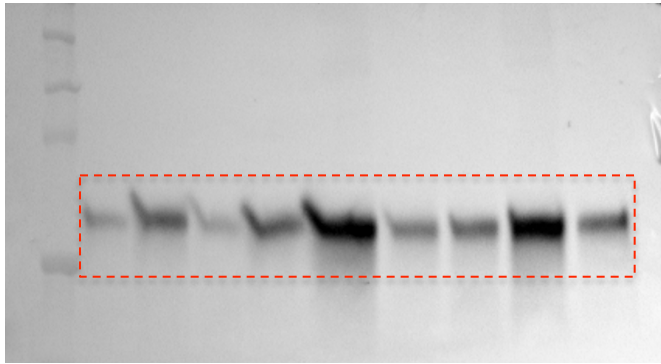


c)

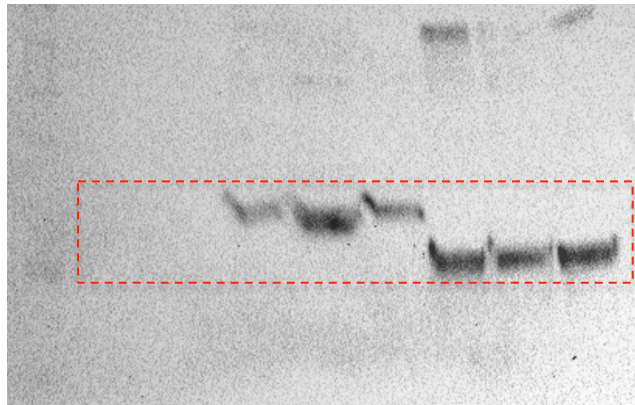


Fig S1. Ajuba interaction with UBA-deficient p62 is significantly greater than interaction with wild type – blot images. a) anti-Ajuba, b) anti-FLAG (p62) and c) anti- α -tubulin. Lane order: molecular weight marker, loading controls: empty vector, 1 μ g FLAG-p62 WT, 4 μ g FLAG-p62 WT, 1 μ g FLAG-p62 Δ UBA, 4 μ g FLAG-p62 Δ UBA, IP eluates: empty vector, 1 μ g FLAG-p62 WT, 4 μ g FLAG-p62 WT, 1 μ g FLAG-p62 Δ UBA, 4 μ g FLAG-p62 Δ UBA.

a)



b)



c)

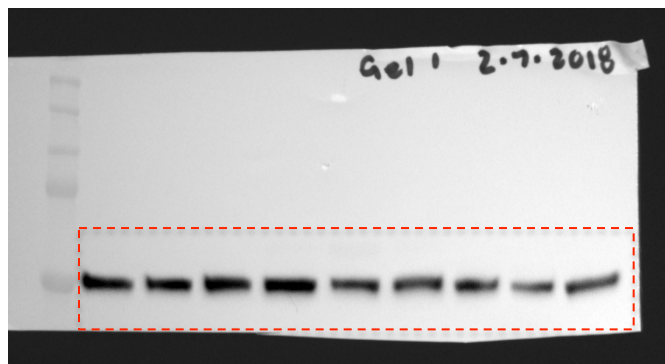


Fig S2. Proteasomal stress enhances the protective effect of p62 on Ajuba levels – blot images. A) anti-His (Ajuba), b) anti-FLAG (p62) and anti- α -tubulin. Lane order: molecular weight marker, empty vector no-treatment, MG132, serum starvation plus bafilomycin, FLAG-p62 wild type no-treatment, MG132, serum starvation plus bafilomycin, FLAG-p62 Δ UBA no-treatment, MG132, serum starvation plus bafilomycin.

Gel 1

Gel 2

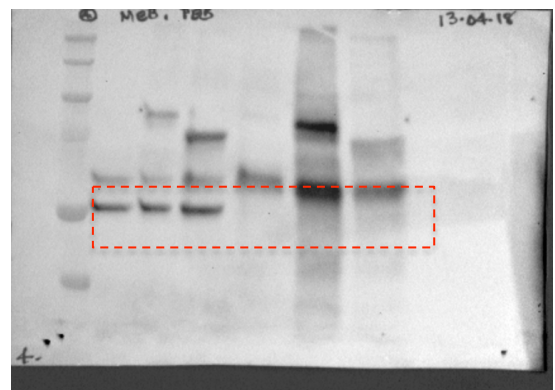
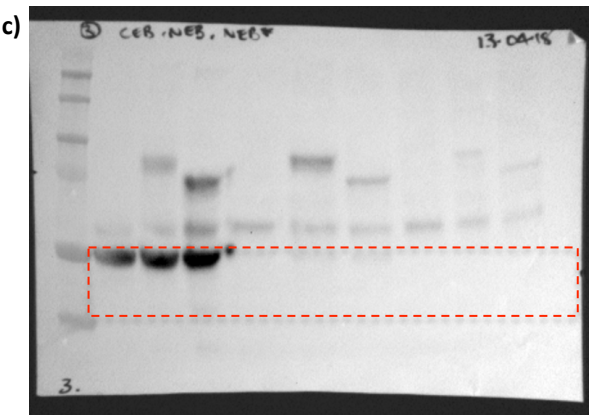
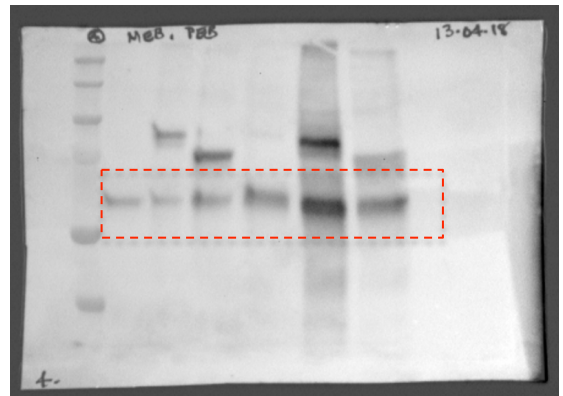
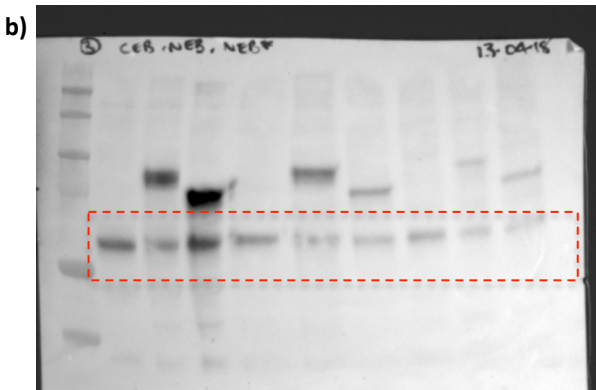
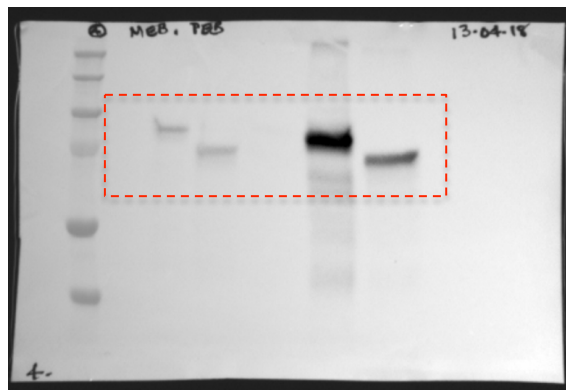
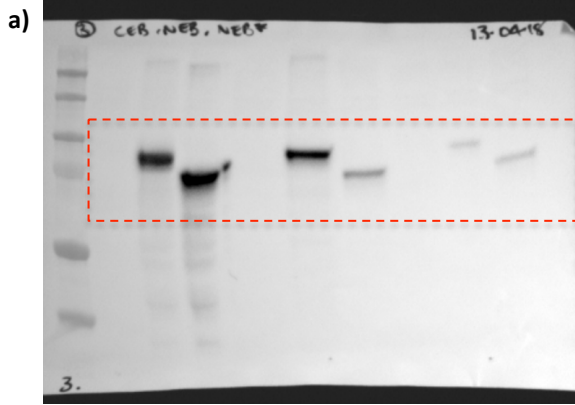


Fig S3. Increased expression of wild type p62 leads to a shift of Ajuba from the chromatin-bound fraction to the cytoskeleton – blot images. A) anti-FLAG (p62), b) anti-Ajuba [not stripped of anti-FLAG (p62)] and anti- α -tubulin (not stripped). Gel 1. Lane order: molecular weight marker, empty vector CEB, FLAG-p62 wild type CEB, FLAG-p62 Δ UBA CEB, empty vector NEB, FLAG-p62 wild type NEB, FLAG-p62 Δ UBA NEB, empty vector NEB*, FLAG-p62 wild type NEB*, FLAG-p62 Δ UBA NEB*. Gel 2. Lane order: molecular weight marker, empty vector MEB, FLAG-p62 wild type MEB, FLAG-p62 Δ UBA MEB, empty vector PEB, FLAG-p62 wild type PEB, FLAG-p62 Δ UBA PEB. CEB = cytoplasmic extraction buffer. NEB = nuclear extraction buffer. NEB* = nuclear extraction buffer, chromatin-bound. MEB = membrane extraction buffer. PEB = pellet extraction buffer (cytoskeletal).