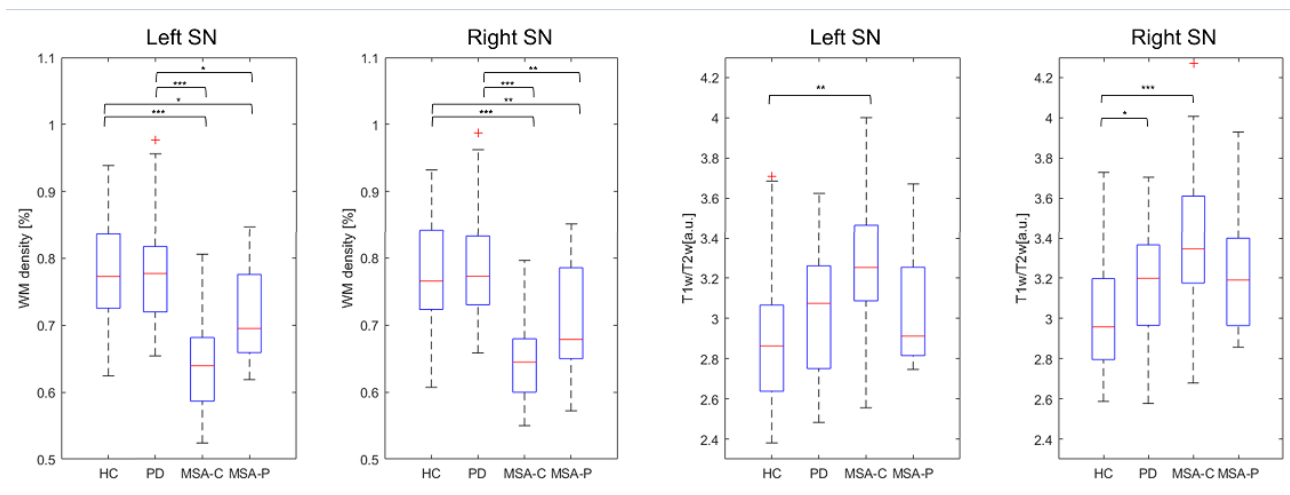


Magnetic resonance T1w/T2w ratio and voxel-based morphometry in multiple system atrophy

Ponticorvo S,¹ Manara R,² Russillo MC,¹ Erro R,¹ Picillo M,¹ Di Salle G,³ Di Salle F,¹ Barone P,¹ Esposito F,⁴ Pellecchia MT¹



Supplementary Figure 1. Box-plots of the WM density (first and second boxes) and T1w/T2w (third and fourth boxes) regional mean values distribution in the bilateral substantia nigra pars compacta (SN) for each group. Significant differences are indicated with asterisks (*p<0.05, **p<0.01).