

Supplementary material for “*Mediation Analysis for Survival Data with High-Dimensional Mediators*”

Haixiang Zhang, Yinan Zheng, Lifang Hou, Cheng Zheng, and Lei Liu

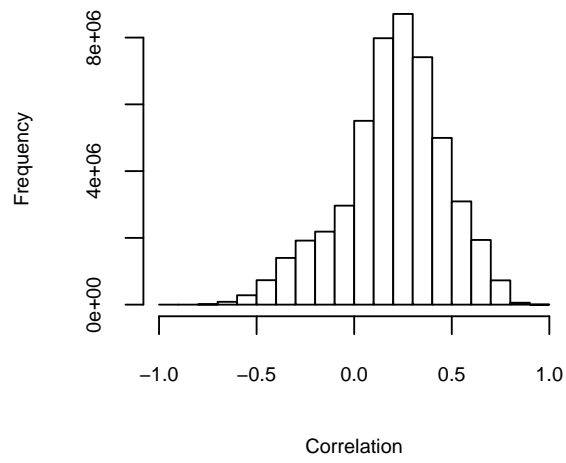
The supplementary material contains Table S.1 and Figures S.1-S.3 for the main document of this article.

**Table S.1.**

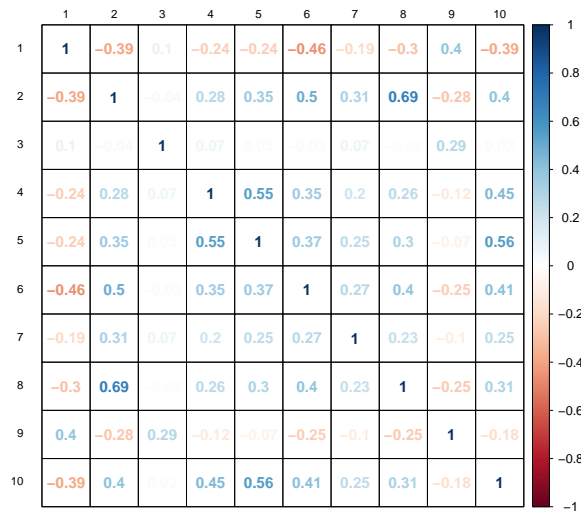
Bias and MSE (in the parenthesis) of estimation for mediation effects in simulation study 1 ( $n = 300$ )<sup>†</sup>.

$\alpha_j\beta_j$	CR=20%		CR=40%	
	Proposed	Luo <i>et al</i>	Proposed	Luo <i>et al</i>
$\alpha_1\beta_1$	-0.0196 (0.0043)	-0.2799 (0.1000)	-0.0293 (0.0060)	-0.3010 (0.1064)
$\alpha_2\beta_2$	-0.1407 (0.0267)	-0.2500 (0.0625)	-0.1549 (0.0313)	-0.2500 (0.0625)
$\alpha_3\beta_3$	-0.0206 (0.0017)	-0.0766 (0.0111)	-0.0232 (0.0022)	-0.1038 (0.0160)
$\alpha_4\beta_4$	-0.0555 (0.0047)	-0.0900 (0.0081)	-0.0584 (0.0047)	-0.0900 (0.0081)
$\alpha_5\beta_5$	-0.0253 (0.0013)	-0.0623 (0.0039)	-0.0317 (0.0016)	-0.0621 (0.0039)
$\alpha_6\beta_6$	-0.0145 (0.0004)	-0.0225 (0.0005)	-0.0152 (0.0004)	-0.0225 (0.0005)
$\alpha_7\beta_7$	-0.0471 (0.0047)	-0.2177 (0.0537)	-0.0398 (0.0048)	-0.2189 (0.0541)
$\alpha_8\beta_8$	0.0185 (0.0022)	-0.1152 (0.0143)	0.0208 (0.0028)	-0.1151 (0.0143)
$\alpha_9\beta_9$	0.0004 (0.0015)	-0.0649 (0.0046)	0.0031 (0.0022)	-0.0640 (0.0045)
$\alpha_{10}\beta_{10}$	-0.0147 (0.0025)	-0.0600 (0.0036)	-0.0089 (0.0025)	-0.0600 (0.0036)
$\alpha_{11}\beta_{11}$	$-6 \times 10^{-5}$ ( $1.4 \times 10^{-5}$ )	$8.2 \times 10^{-5}$ ( $7 \times 10^{-6}$ )	0.0001 ( $7.2 \times 10^{-6}$ )	$-5.5 \times 10^{-5}$ ( $6 \times 10^{-7}$ )
$\alpha_{12}\beta_{12}$	0.0069 (0.0013)	0 (0)	0.0143 (0.0014)	0 (0)
$\alpha_{13}\beta_{13}$	$-4 \times 10^{-5}$ ( $2.8 \times 10^{-7}$ )	0 (0)	$-3 \times 10^{-5}$ ( $6.6 \times 10^{-7}$ )	0 (0)

<sup>†</sup> “Proposed” denotes our method; “Luo *et al*” denotes Luo et al. (2020)’s method; “CR” denotes the censoring rate of failure times.



**Figure S.1** The histogram for elements in lower triangular matrix of  $\Sigma_e$ .



**Figure S.2** The  $10 \times 10$  upper sub-matrix of  $\Sigma_e$  towards the active mediators  $\{M_k\}_{k=1}^{10}$ .