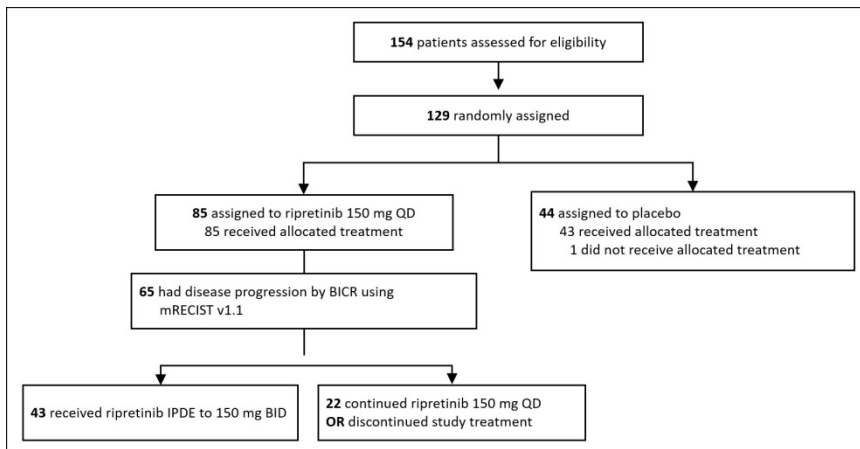


Supplemental Figures for:
Clinical Benefit of Ripretinib Dose Escalation After Disease Progression in Advanced Gastrointestinal Stromal Tumor: An Analysis of the INVICTUS Study
John Zalcberg et al.

Supplemental Figure 1. Study flow.

Data Reported as of Aug 10, 2020.

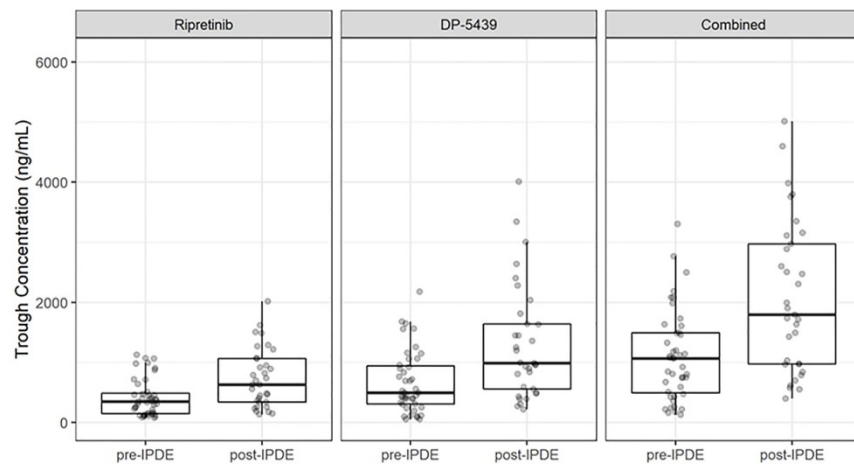
Abbreviations: BICR, blinded independent central review; BID, twice daily; IPDE, intra-patient dose escalation; mRECIST, modified response evaluation criteria in solid tumors; QD, once daily.



Supplemental Figure 2. Plasma trough concentrations of ripretinib, DP-5439 (active metabolite of ripretinib) and combined (ripretinib + DP-5439) at ripretinib 150 mg QD (pre-IPDE) and 150 mg BID (post-IPDE) among 33 pharmacokinetics evaluable patients receiving ripretinib IPDE to 150 mg BID after PD on 150 mg QD.

Boxes indicate the median, the 25th to 75th percentile, and whiskers represent maximum and minimum values within 1.5x IQR.

Abbreviations: BID, twice daily; IQR, interquartile range; IPDE, intra-patient dose escalation; PD; progressive disease; QD, once daily.



Supplemental Figure 3. Total duration of ripretinib treatment among patients in the INVICTUS study who received IPDE to 150 mg BID after PD on 150 mg QD.

^aDeaths noted were those counted as PFS events.

Abbreviations: BID, twice daily; IPDE, intra-patient dose escalation; PD, progressive disease; PFS, progression-free survival; QD, once daily.

