

Table S1. Association of neuropathologies with cognitive level and change

Neuropathologic Indicator	Global Cognition		Cognitive Change	
	Estimate (SE)	95% CI	Estimate (SE)	95% CI
Amyloid	-0.03 (0.01)	(-0.04,-0.02)	-0.001 (0.001)	(-0.003,-0.0008)
Tau Tangles	-0.06 (0.001)	(-0.07,-0.05)	-0.004 (0.0002)	(-0.005,-0.004)
Gross Infarcts	-0.27 (0.05)	(-0.37,-0.16)	-0.01 (0.005)	(-0.02,-0.004)
Microinfarcts	-0.10 (0.05)	(-0.21,0.01)	0.004 (0.005)	(-0.006,0.01)
Cerebral Amyloid Angiopathy	-0.08 (0.05)	(-0.19,0.02)	-0.005 (0.005)	(-0.01,0.004)
Atherosclerosis	-0.17 (0.06)	(-0.28,-0.06)	-0.01 (0.005)	(-0.02,-0.006)
Arteriolosclerosis	-0.09 (0.06)	(-0.20,0.01)	-0.01 (0.005)	(-0.02,-0.0008)
Lewy bodies, neocortical	-0.53 (0.07)	(-0.67,-0.39)	-0.04 (0.01)	(-0.05,-0.03)
TDP-43	-0.09 (0.02)	(-0.14,-0.05)	-0.004 (0.002)	(-0.007,0.0003)
Hippocampal Sclerosis	-0.70 (0.09)	(-0.87,-0.52)	-0.04 (0.01)	(-0.05,-0.02)

Note. Adjusted for time between last cognitive assessment and death

Table S2. Associations of pathology type and personality trait

	<u>Neuroticism</u>			
	<u>Estimate</u>	<u>Std Err</u>	<u>LCL</u>	<u>UCL</u>
Amyloid	0.014	0.007	0.001	0.028
Tau tangles	0.009	0.003	0.003	0.016
Gross infarcts	-0.031	0.058	-0.145	0.082
Microinfarcts	-0.021	0.060	-0.139	0.098
Cerebral amyloid angiopathy	-0.024	0.058	-0.138	0.089
Atherosclerosis	0.067	0.060	-0.050	0.185
Arteriolosclerosis	0.002	0.060	-0.116	0.121
Lewy bodies, neocortical	0.058	0.079	-0.098	0.214
TDP-43	0.024	0.027	-0.021	0.068
Hippocampal sclerosis	0.093	0.094	-0.095	0.277
	<u>Extraversion</u>			
	<u>Estimate</u>	<u>Std Err</u>	<u>LCL</u>	<u>UCL</u>
Amyloid	0.011	0.007	-0.002	0.025
Tau tangles	0.007	0.003	0.001	0.014
Gross infarcts	-0.094	0.057	-0.207	0.019
Microinfarcts	-0.052	0.090	-0.140	0.066
Cerebral amyloid angiopathy	-0.006	0.057	-0.119	0.106
Atherosclerosis	-0.086	0.059	-0.202	0.029
Arteriolosclerosis	-0.021	0.059	-0.137	0.095
Lewy bodies, neocortical	0.082	0.080	-0.074	0.238
TDP-43	0.035	0.022	-0.009	0.079
Hippocampal sclerosis	-0.014	0.093	-0.196	0.169
	<u>Conscientiousness</u>			
	<u>Estimate</u>	<u>Std Err</u>	<u>LCL</u>	<u>UCL</u>
Amyloid	-0.329	0.008	-0.049	-0.017
Tau tangles	-0.004	0.004	-0.011	0.003
Gross infarcts	0.039	0.067	-0.091	0.170
Microinfarcts	0.075	0.069	-0.060	0.210
Cerebral amyloid angiopathy	-0.005	0.066	-0.135	0.124
Atherosclerosis	0.036	0.070	-0.101	0.173
Arteriolosclerosis	0.045	0.070	-0.092	0.183
Lewy bodies, neocortical	-0.188	0.091	-0.367	-0.010
TDP-43	0.003	0.026	-0.048	0.054
Hippocampal sclerosis	-0.032	0.110	-0.248	0.184
	<u>Openness</u>			
	<u>Estimate</u>	<u>Std Err</u>	<u>LCL</u>	<u>UCL</u>
Amyloid	0.018	0.011	-0.009	0.033
Tau tangles	0.003	0.005	-0.006	0.012

Gross infarcts	-0.049	0.081	-0.209	0.110
Microinfarcts	-0.166	0.084	-0.331	-0.001
Cerebral amyloid angiopathy	0.005	0.079	-0.151	0.161
Atherosclerosis	-0.134	0.080	-0.292	0.023
Arteriolosclerosis	-0.155	0.084	-0.319	0.009
Lewy bodies, neocortical	0.295	0.112	0.074	0.516
TDP-43	-0.035	0.032	-0.098	0.027
Hippocampal sclerosis	-0.158	0.135	-0.423	0.107

Agreeableness

	<u>Estimate</u>	<u>Std Err</u>	<u>LCL</u>	<u>UCL</u>
Amyloid	0.006	0.011	-0.015	0.027
Tau tangles	0.006	0.004	-0.004	0.014
Gross infarcts	-0.009	0.082	-0.170	0.151
Microinfarcts	0.057	0.085	-0.109	0.224
Cerebral amyloid angiopathy	0.071	0.080	-0.086	0.228
Atherosclerosis	-0.170	0.080	-0.327	-0.012
Arteriolosclerosis	0.070	0.084	-0.095	0.234
Lewy bodies, neocortical	0.020	0.114	-0.204	0.245
TDP-43	-0.003	0.032	-0.066	0.060
Hippocampal sclerosis	-0.026	0.136	-0.293	0.241

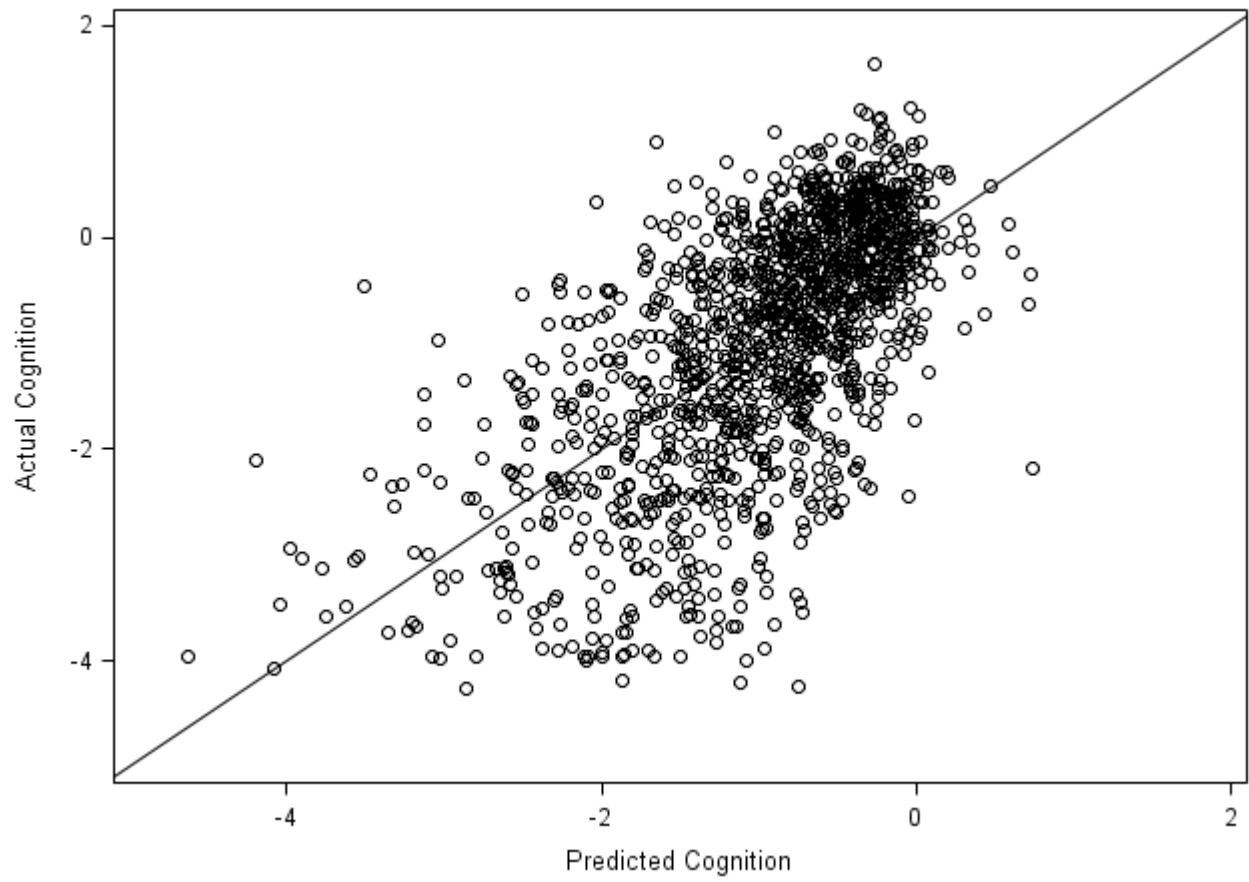


Figure S1. Predicted vs. Actual Cognition

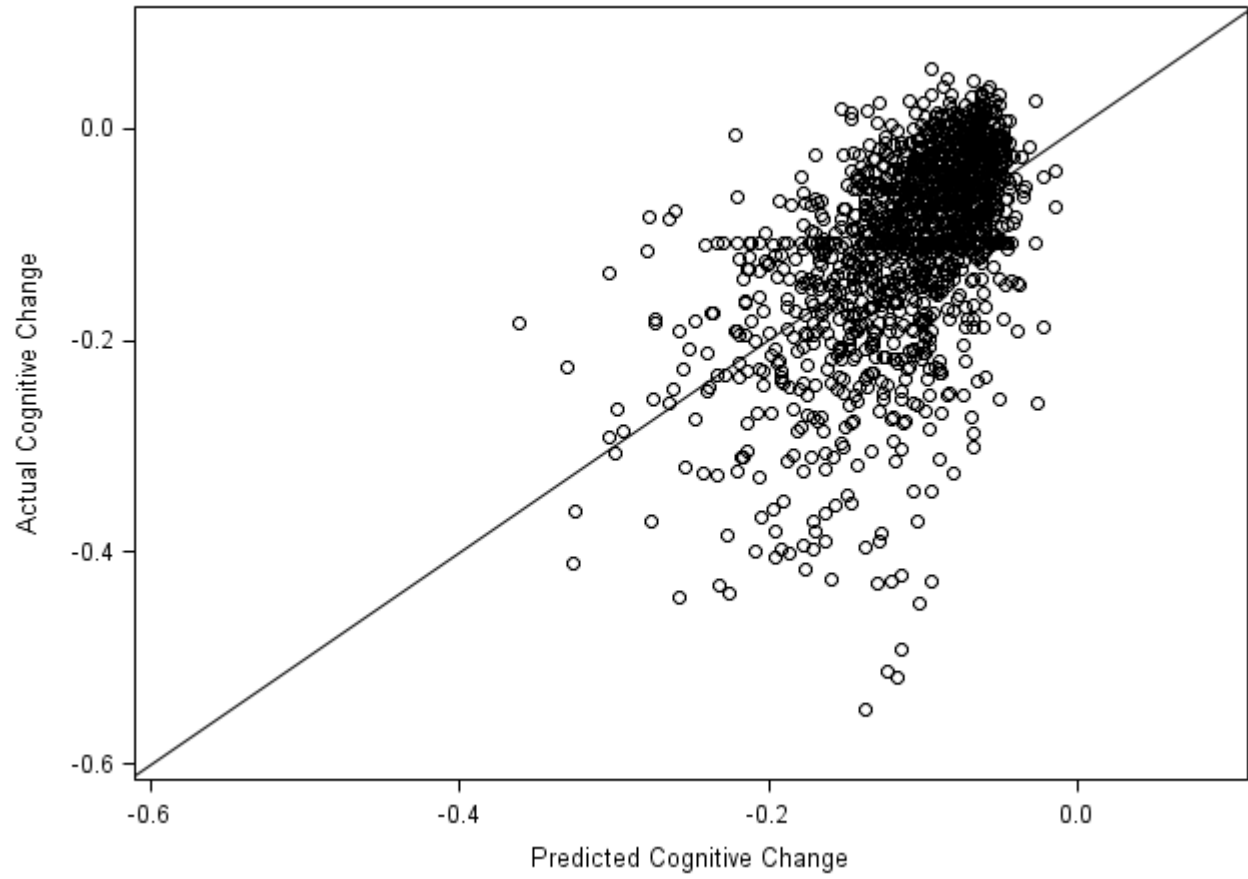


Figure S2. Actual vs. Predicted Cognitive Change.