

Figure S1 Consort schematic diagram showing the study subject selection.

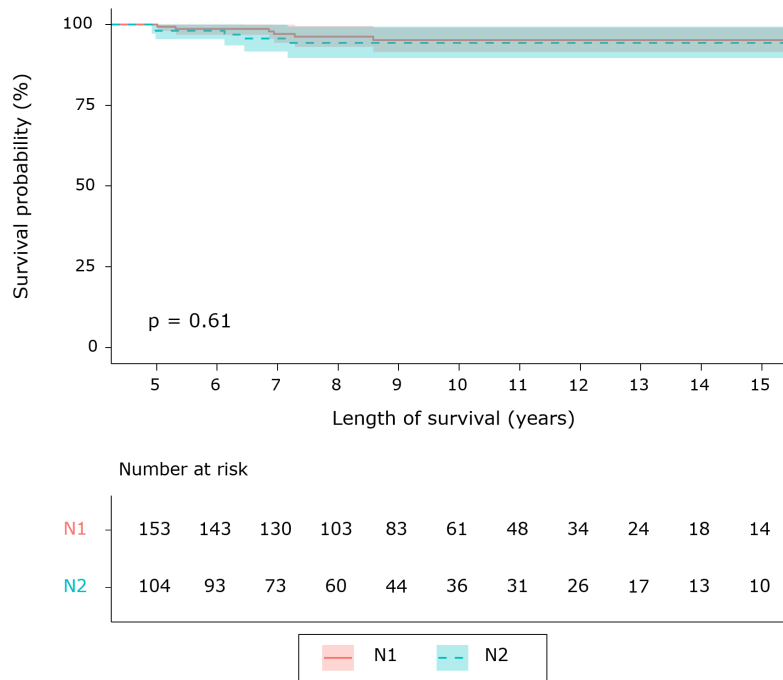


Figure S2 Comparison of RFS between N1 and N2 stage groups for long-term survivors with completely resected NSCLC, derived using the Kaplan-Meier method. There was no difference in the RFS between the two groups (P=0.609). RFS, recurrence-free survival; NSCLC, non-small cell lung cancer.

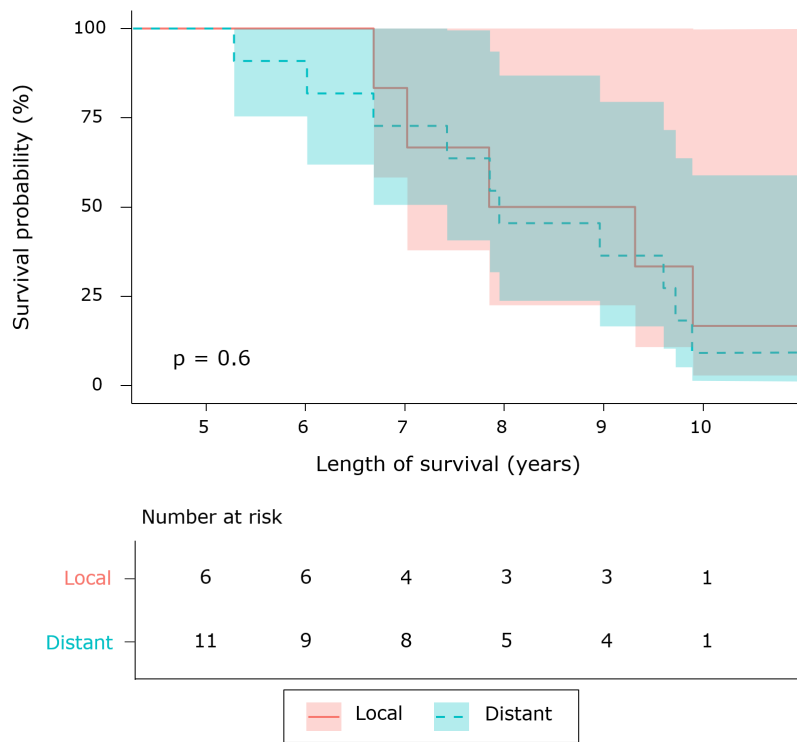


Figure S3 Comparison of OS between the local and distant recurrence groups for long-term survivors with completely resected NSCLC, derived using the Kaplan-Meier method. There was no difference in the OS between the two groups ($P=0.601$). OS, overall survival; NSCLC, non-small cell lung cancer.