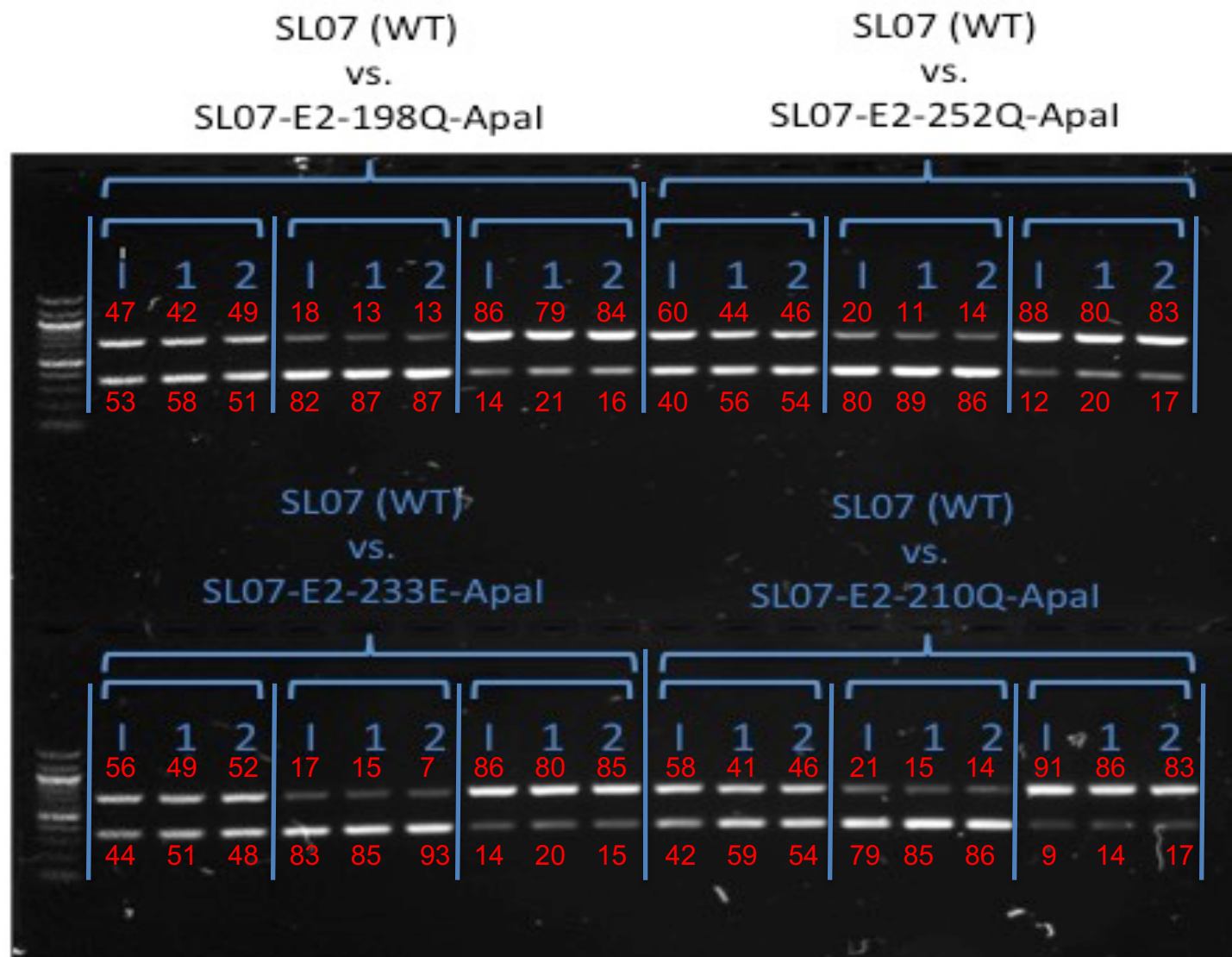


Figure S1: Passage of competing viruses in Vero Cells. All competing groups were mixed in 3 different ratios and passaged in Vero cells in 96 well plates in duplicate for 48 hours. RNA from the initial mix and passaged material purified, amplified via RT-PCR, and restriction digested as described in the materials and methods. Gel lanes are labeled as I for the input and 1 and 2 for the duplicate passages. Proportions of DNA as estimated by GelQuant.NET software are shown in red next to the relevant bands.



SL07-E2-210Q
vs.
SL07 (WT+Apal)

SL07-E2-198Q
vs.
SL07 (WT+Apal)

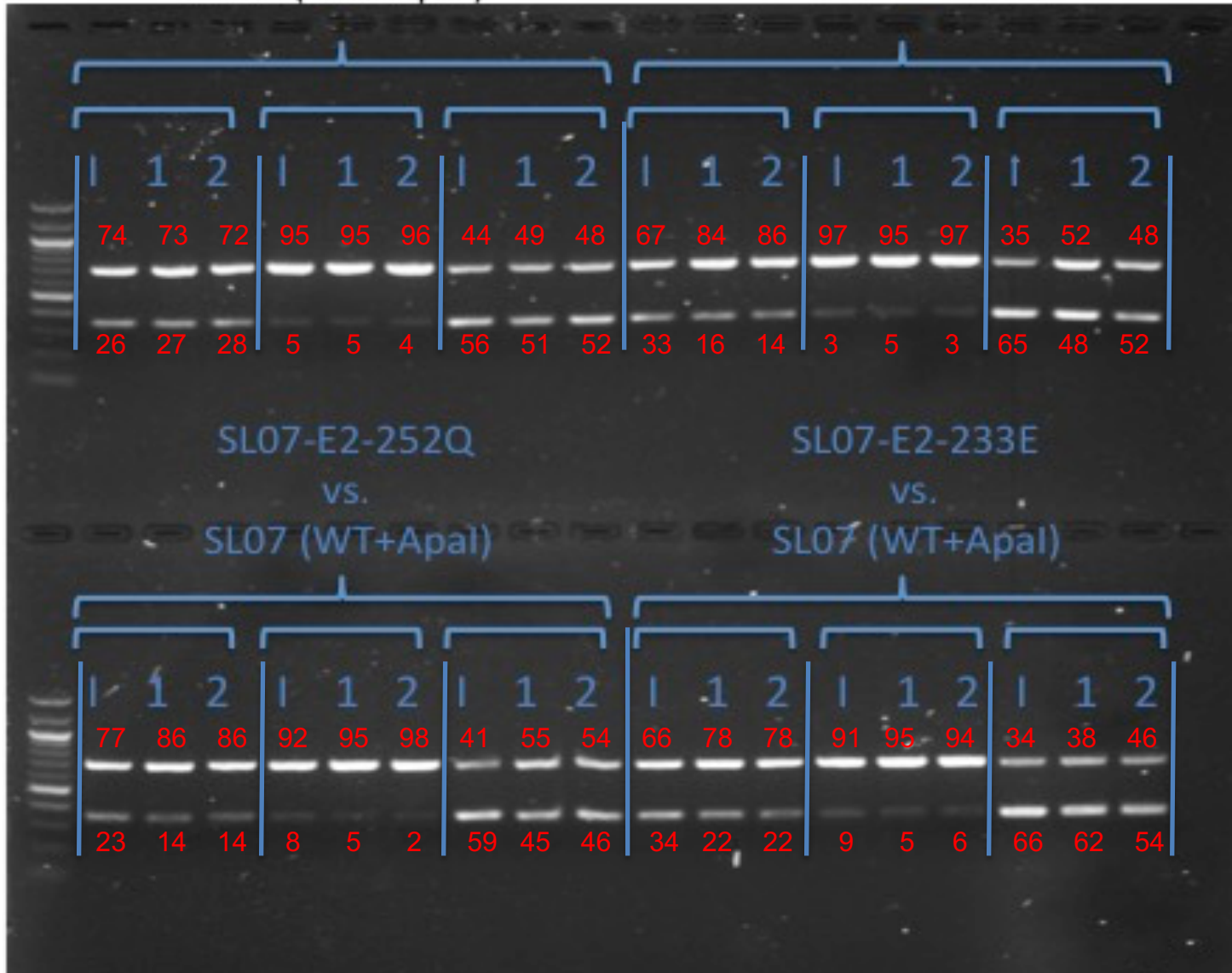


Figure S1: Passage of competing viruses in Vero Cells (Continued).

