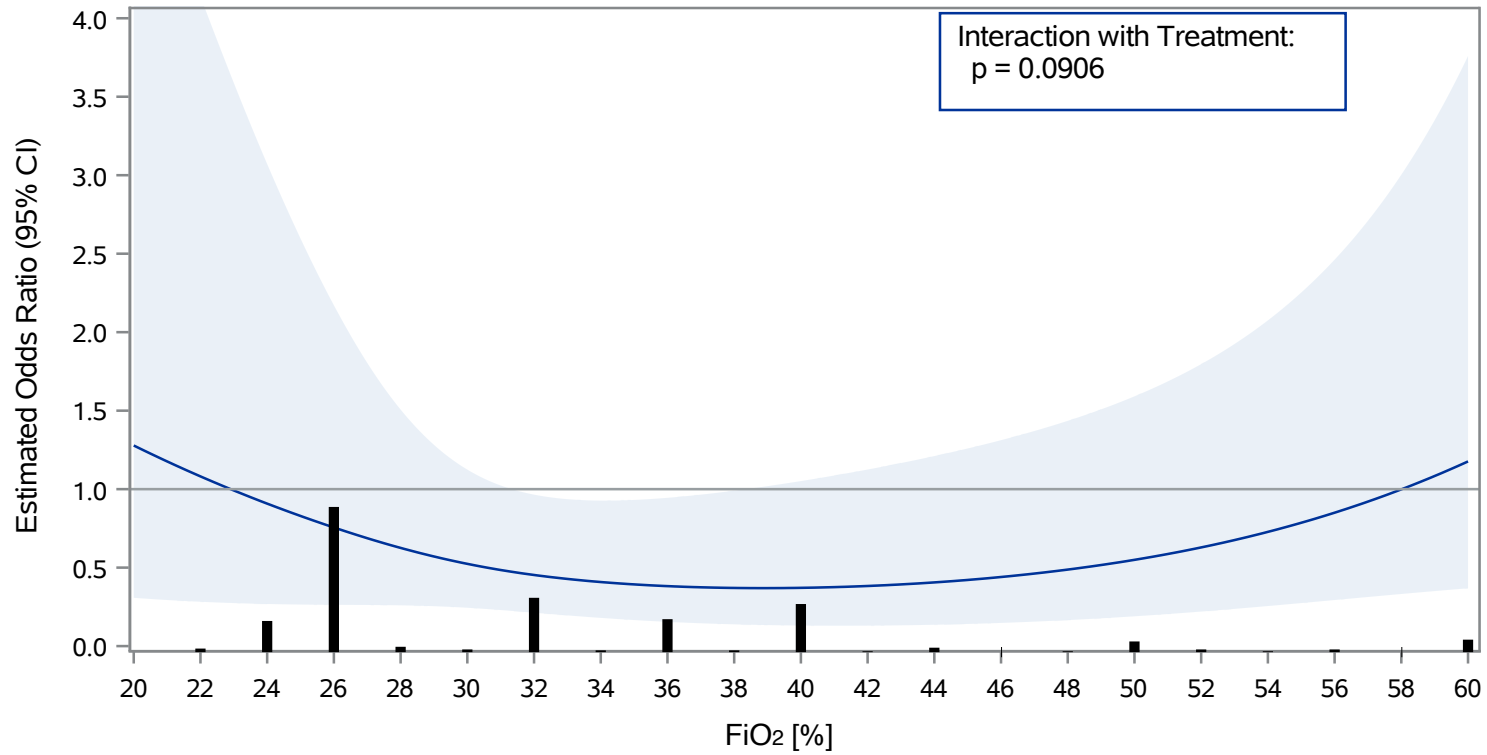
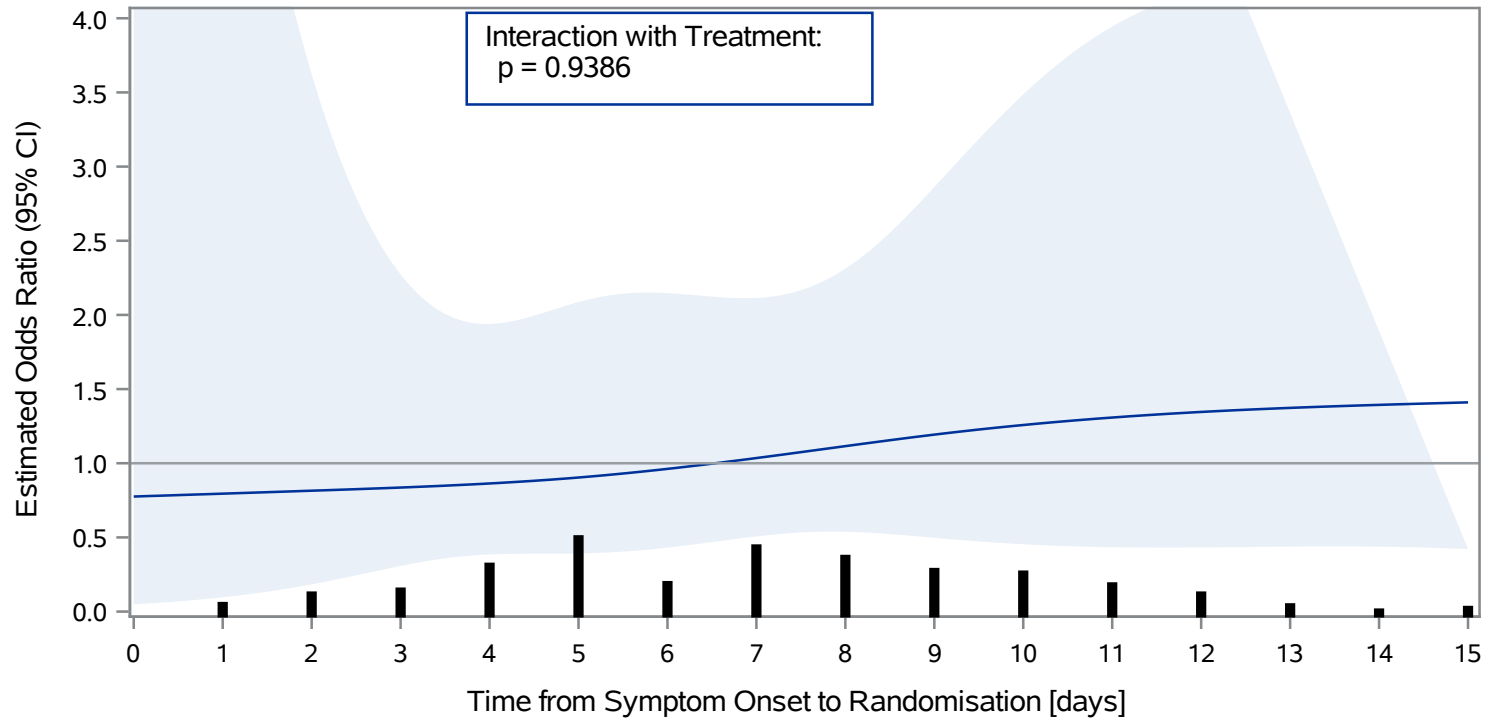


Supplement S5A: Interaction between treatment and baseline FiO₂



Odds ratios were obtained from a logistic regression model, including treatment (as factor), FiO₂ (as restricted cubic spline) and their interaction, and further adjusted for Study Site and Period. A histogram for the distribution of patients across the covariate values is included at the bottom of the graph.

Supplement S5B: Interaction between treatment and time from symptoms to randomisation



Odds ratios were obtained from a logistic regression model, including treatment (as factor), Time from Symptom Onset to Randomisation (as restricted cubic spline) and their interaction, and further adjusted for Study Site and Period.

A histogram for the distribution of patients across the covariate values is included at the bottom of the graph.