

Sox2

P12

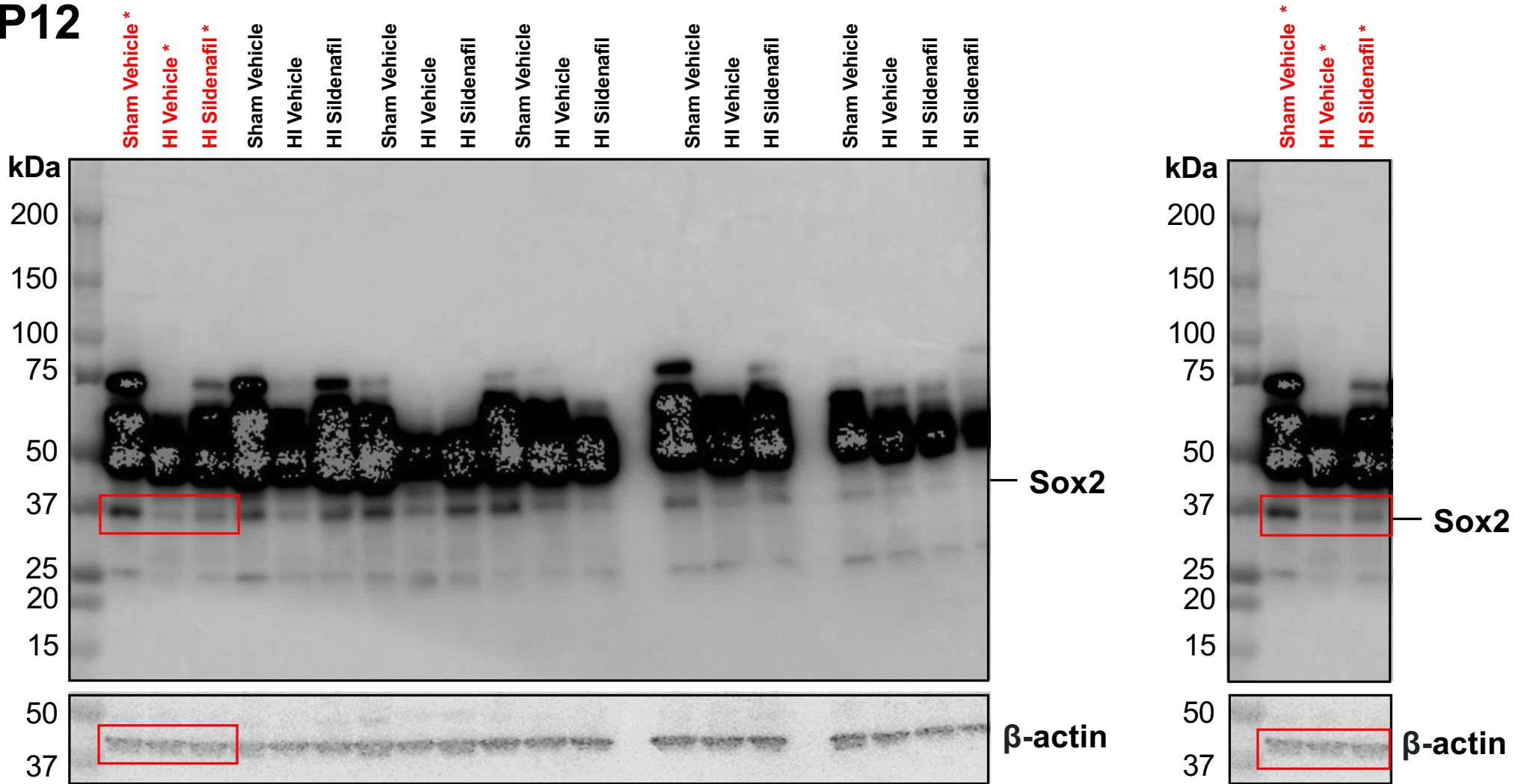


FIGURE 3A – P12: Western blotting for Sox2 at P12, showing full-length western blots (on left panel) and representative samples chosen to be cropped for main Figure 3 (on right panel). The regions of the original blots used in main figure have been denoted using red boxes.

P17

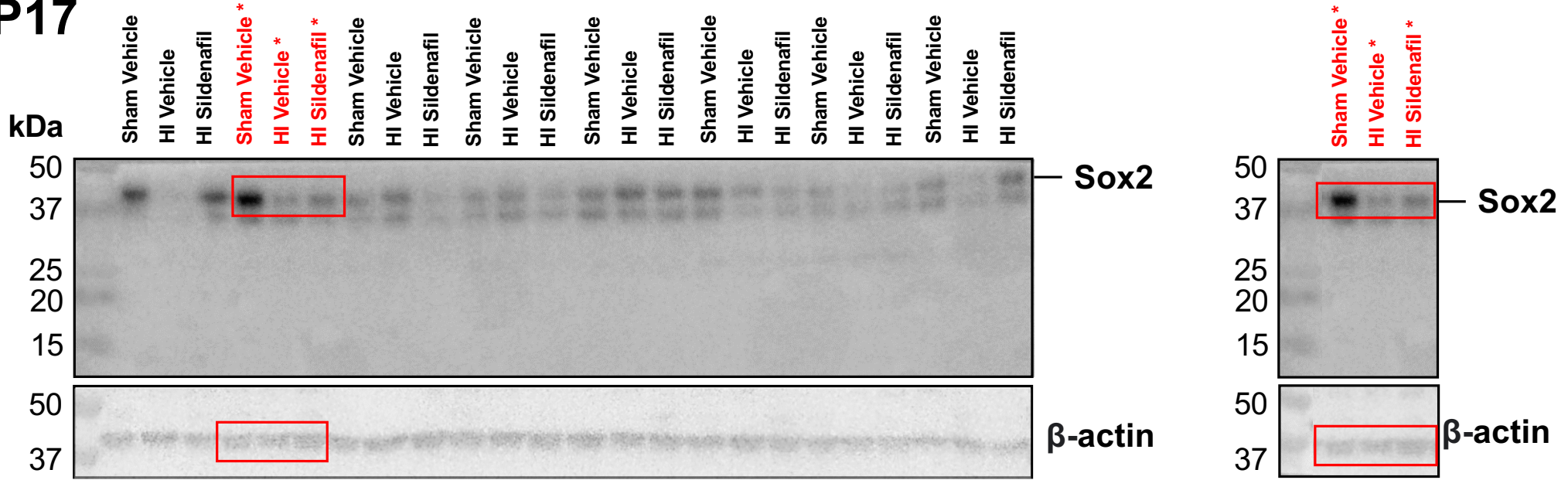


FIGURE 3A – P17: Western blotting for Sox2 at P17, showing full-length western blots (on left panel) and representative samples chosen to be cropped for main Figure 3 (on right panel). The regions of the original blots used in main figure have been denoted using red boxes.

P30

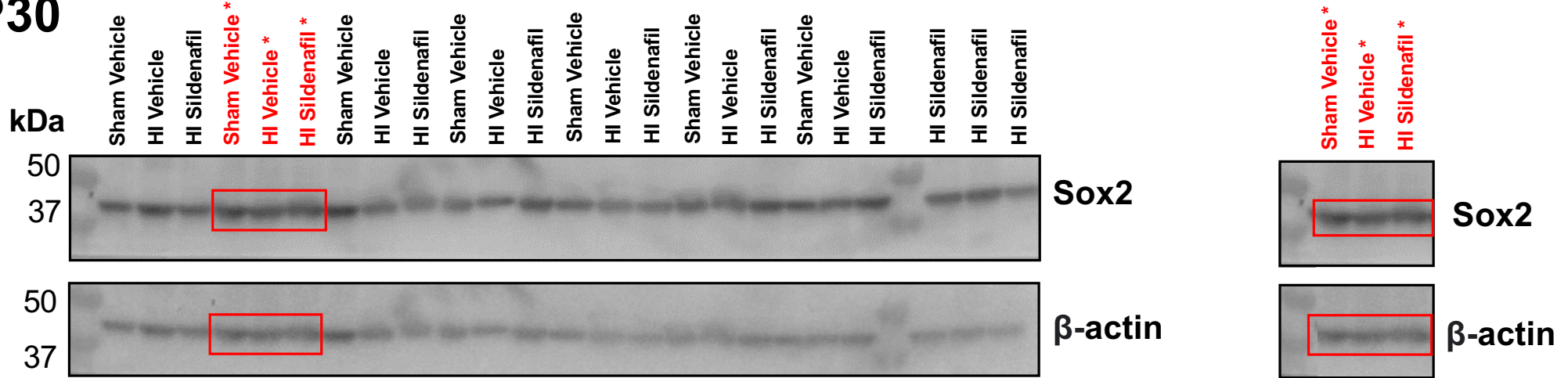


FIGURE 3A – P30: Western blotting for Sox2 at P30, showing full-length western blots (on left panel) and representative samples chosen to be cropped for main Figure 3 (on right panel). The regions of the original blots used in main figure have been denoted using red boxes.

Nestin

P12

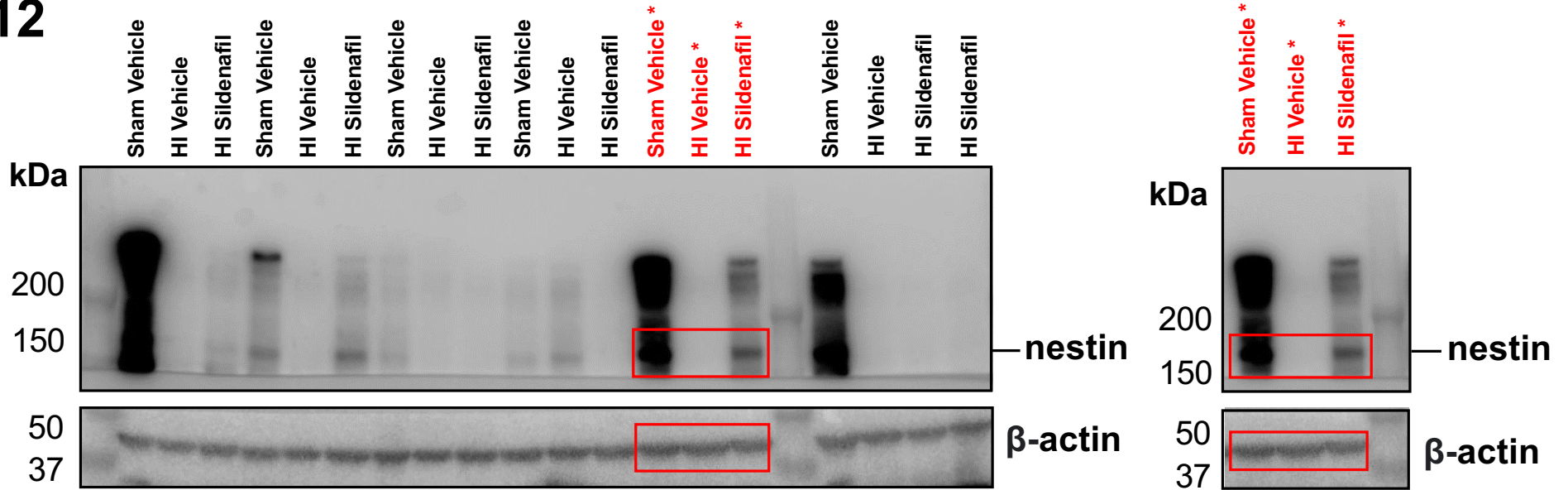


FIGURE 3B – P12: Western blotting for Nestin at P12, showing full-length western blots (on left panel) and representative samples chosen to be cropped for main Figure 3 (on right panel). The regions of the original blots used in main figure have been denoted using red boxes.

P17

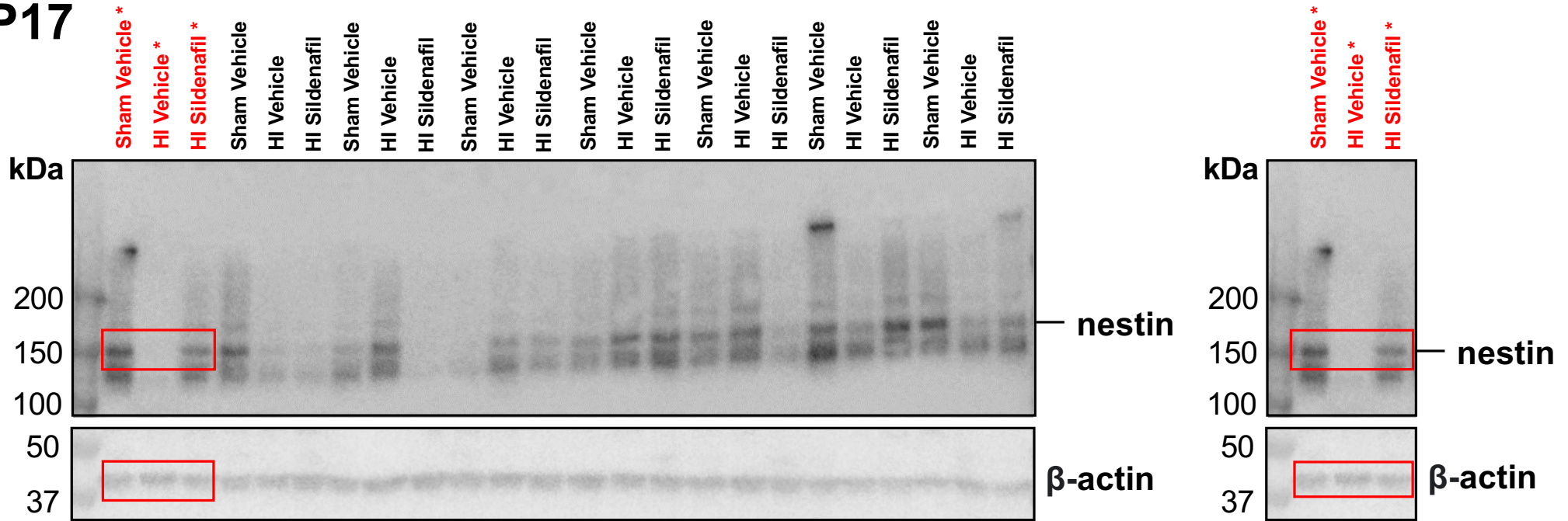


FIGURE 3B – P17: Western blotting for Nestin at P17, showing full-length western blots (on left panel) and representative samples chosen to be cropped for main Figure 3 (on right panel). The regions of the original blots used in main figure have been denoted using red boxes.

P30

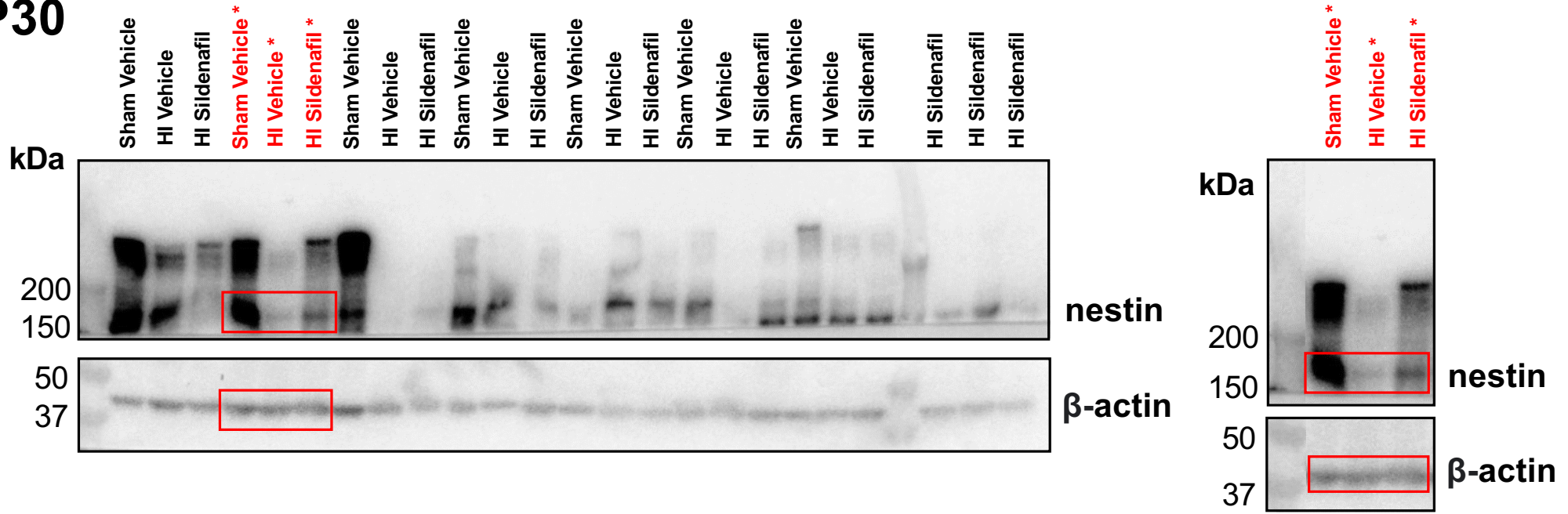


FIGURE 3B – P30: Western blotting for Nestin at P30, showing full-length western blots (on left panel) and representative samples chosen to be cropped for main Figure 3 (on right panel). The regions of the original blots used in main figure have been denoted using red boxes.

DCX

P12

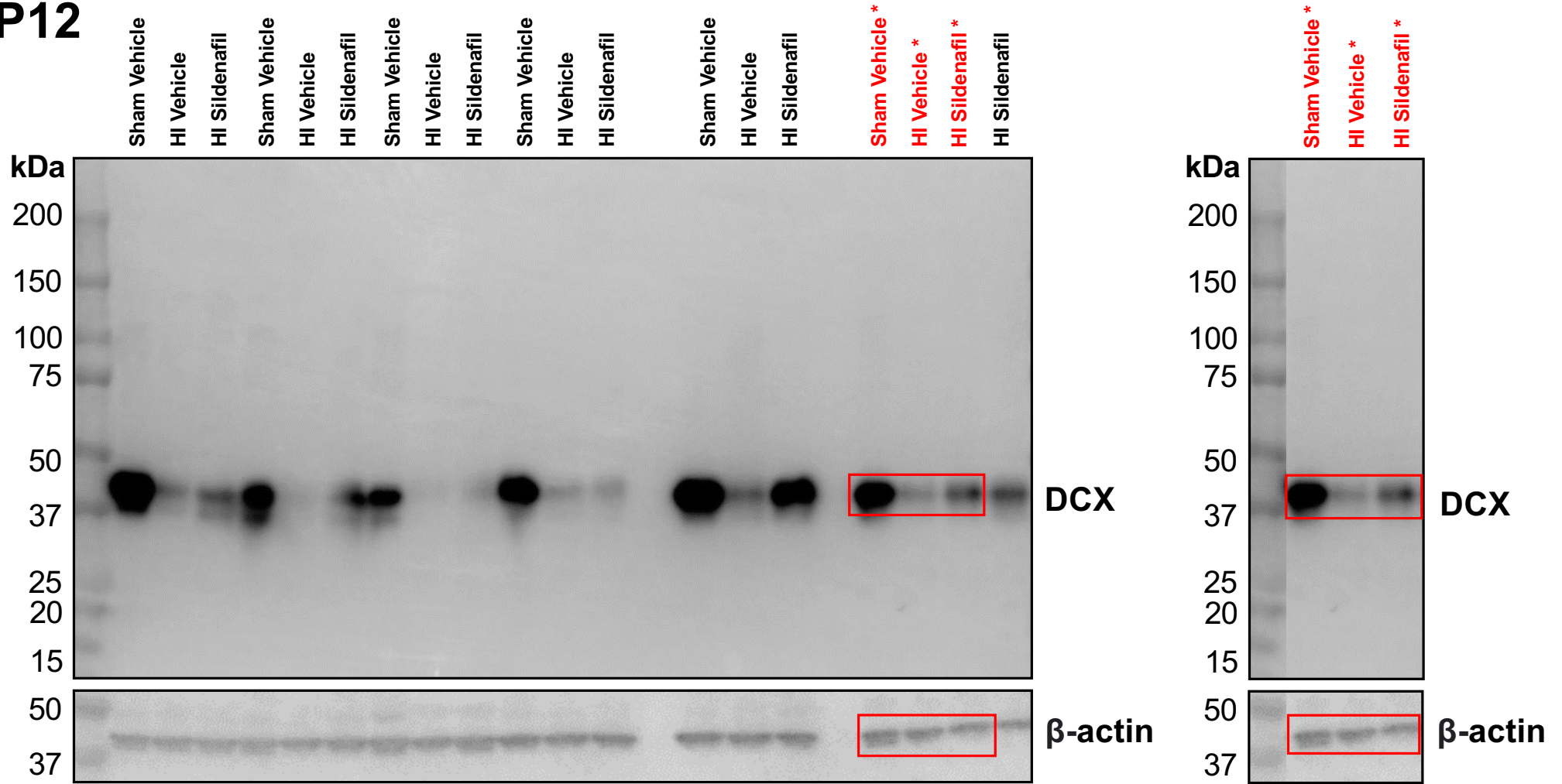


FIGURE 3C – P12: Western blotting for DCX at P12, showing full-length western blots (on left panel) and representative samples chosen to be cropped for main Figure 3 (on right panel). The regions of the original blots used in main figure have been denoted using red boxes.

P17

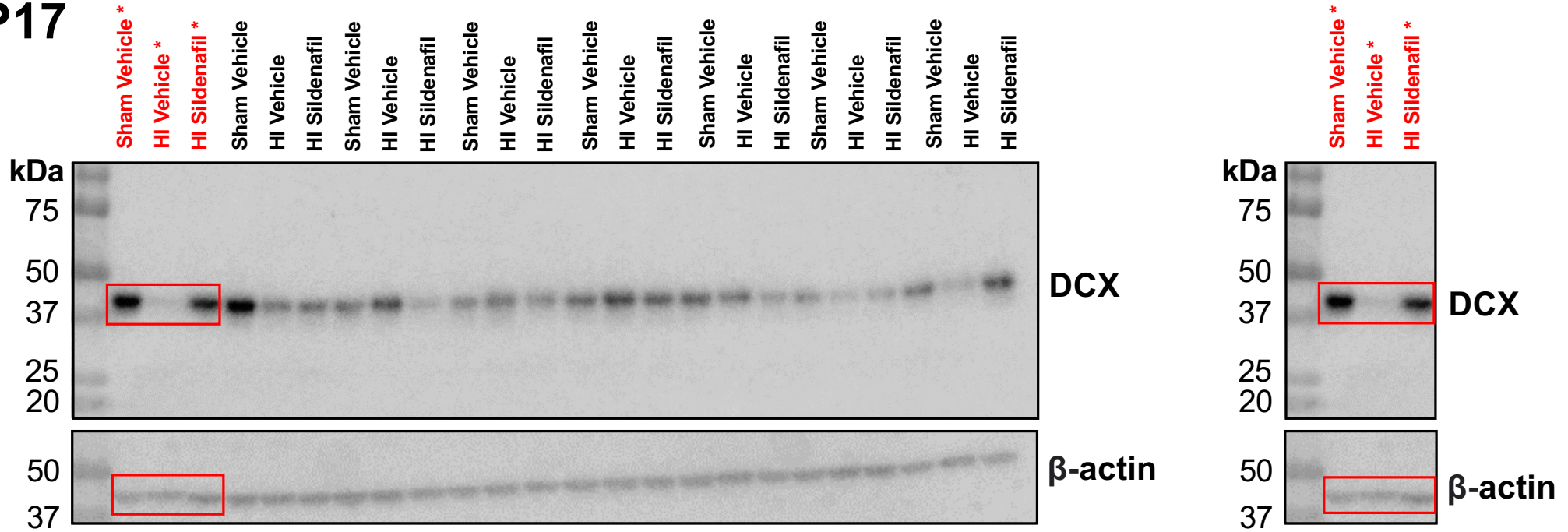


FIGURE 3C – P17: Western blotting for DCX at P17, showing full-length western blots (on left panel) and representative samples chosen to be cropped for main Figure 3 (on right panel). The regions of the original blots used in main figure have been denoted using red boxes.

P30

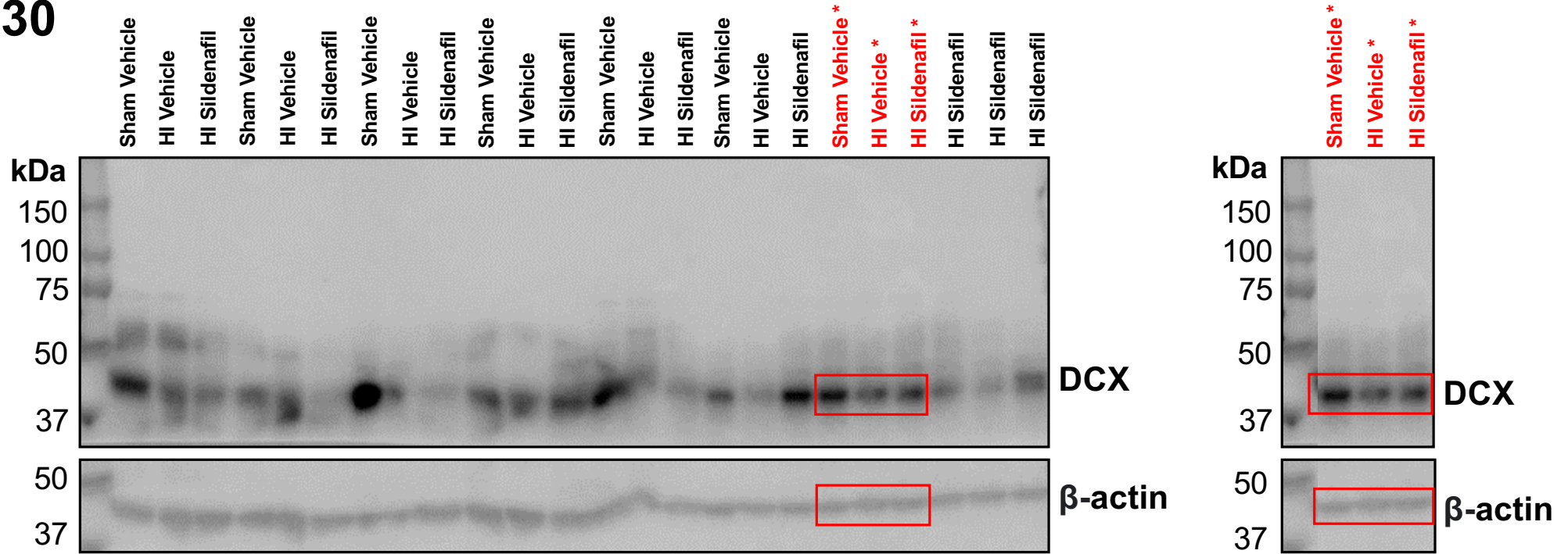


FIGURE 3C – P30: Western blotting for DCX at P30, showing full-length western blots (on left panel) and representative samples chosen to be cropped for main Figure 3 (on right panel). The regions of the original blots used in main figure have been denoted using red boxes.

NeuN

P12

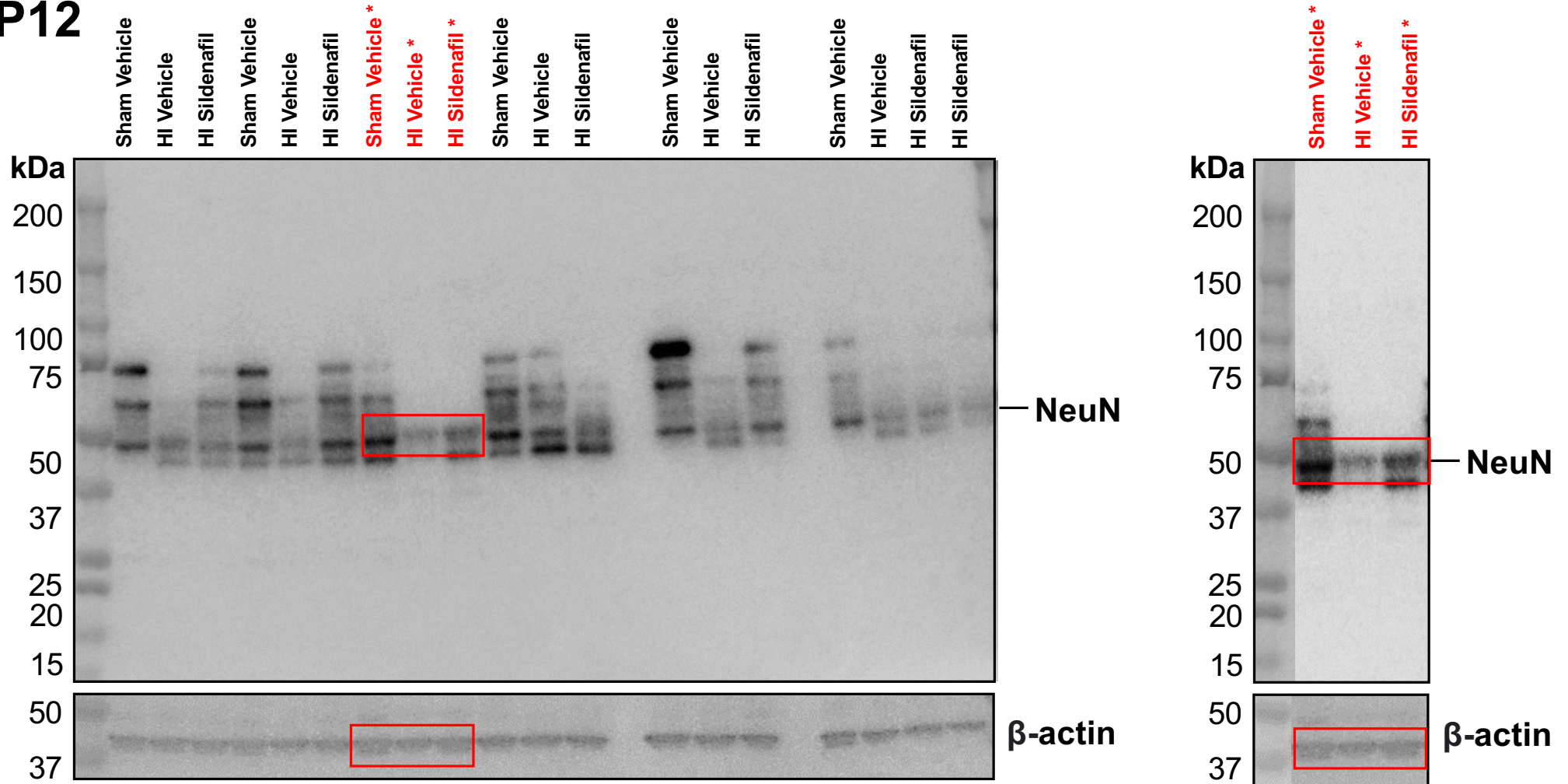


FIGURE 3D – P12: Western blotting for NeuN at P12, showing full-length western blots (on left panel) and representative samples chosen to be cropped for main Figure 3 (on right panel). The regions of the original blots used in main figure have been denoted using red boxes.

P17

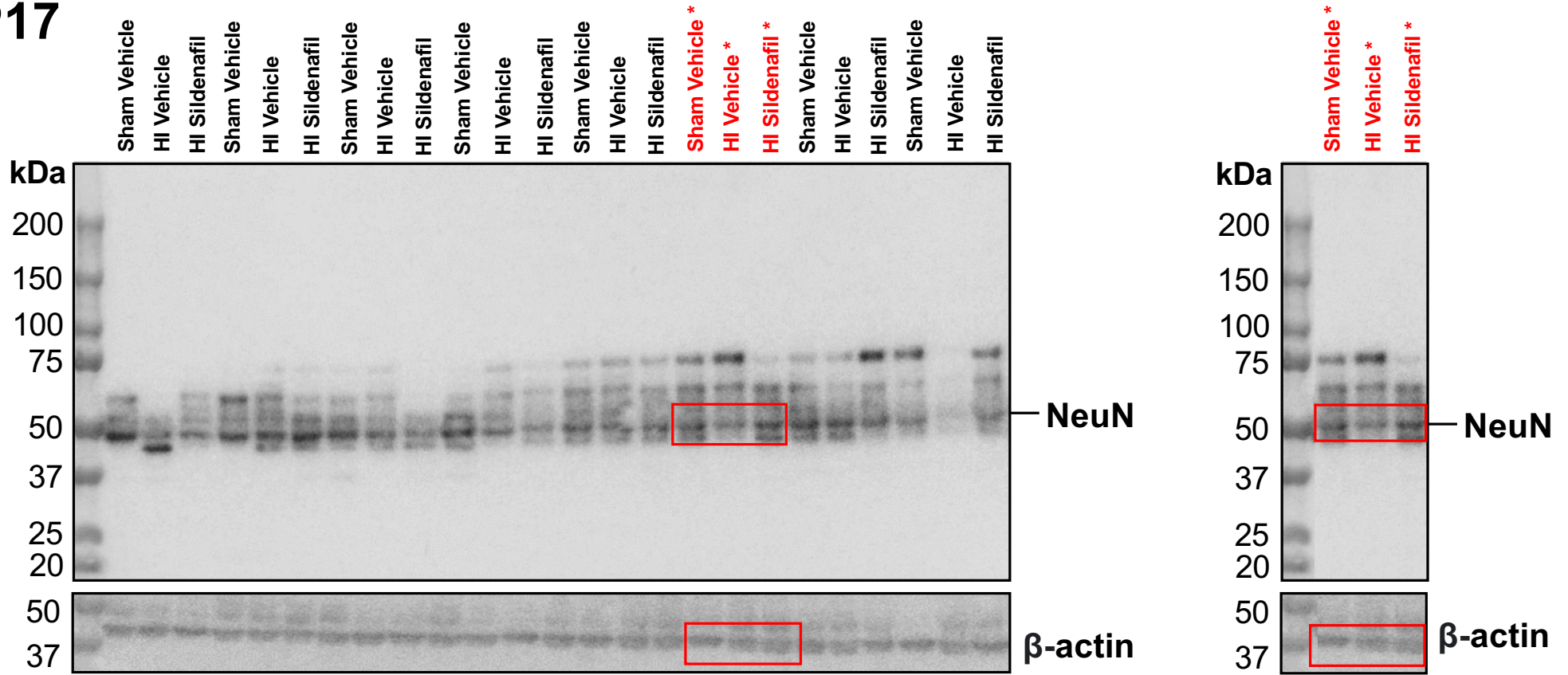


FIGURE 3D – P17: Western blotting for NeuN at P17, showing full-length western blots (on left panel) and representative samples chosen to be cropped for main Figure 3 (on right panel). The regions of the original blots used in main figure have been denoted using red boxes.

P30

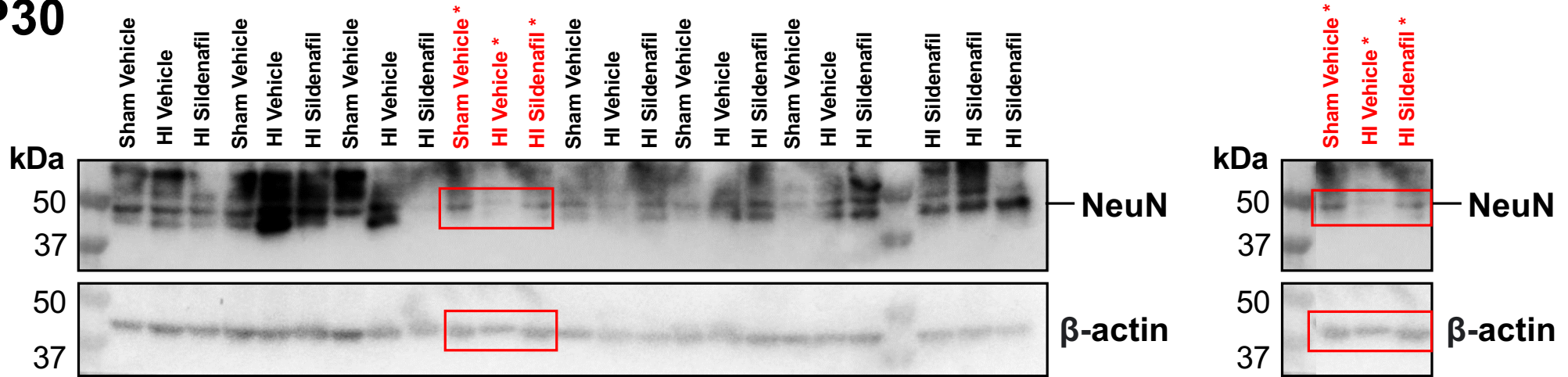


FIGURE 3D – P30: Western blotting for NeuN at P30, showing full-length western blots (on left panel) and representative samples chosen to be cropped for main Figure 3 (on right panel). The regions of the original blots used in main figure have been denoted using red boxes.

Calretinin

P12

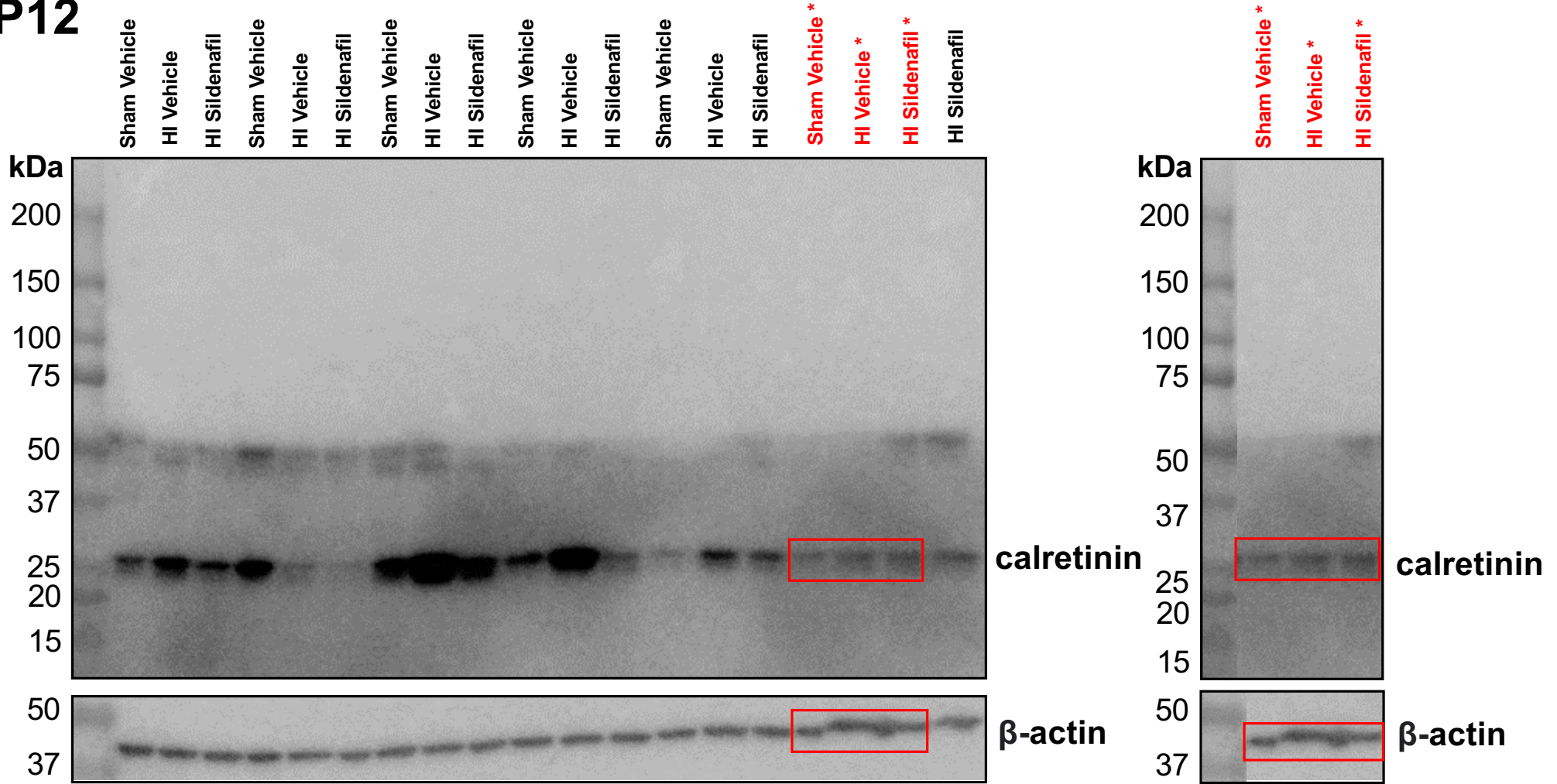


FIGURE 3E – P12: Western blotting for Calretinin at P12, showing full-length western blots (on left panel) and representative samples chosen to be cropped for main Figure 3 (on right panel). The regions of the original blots used in main figure have been denoted using red boxes.

P17

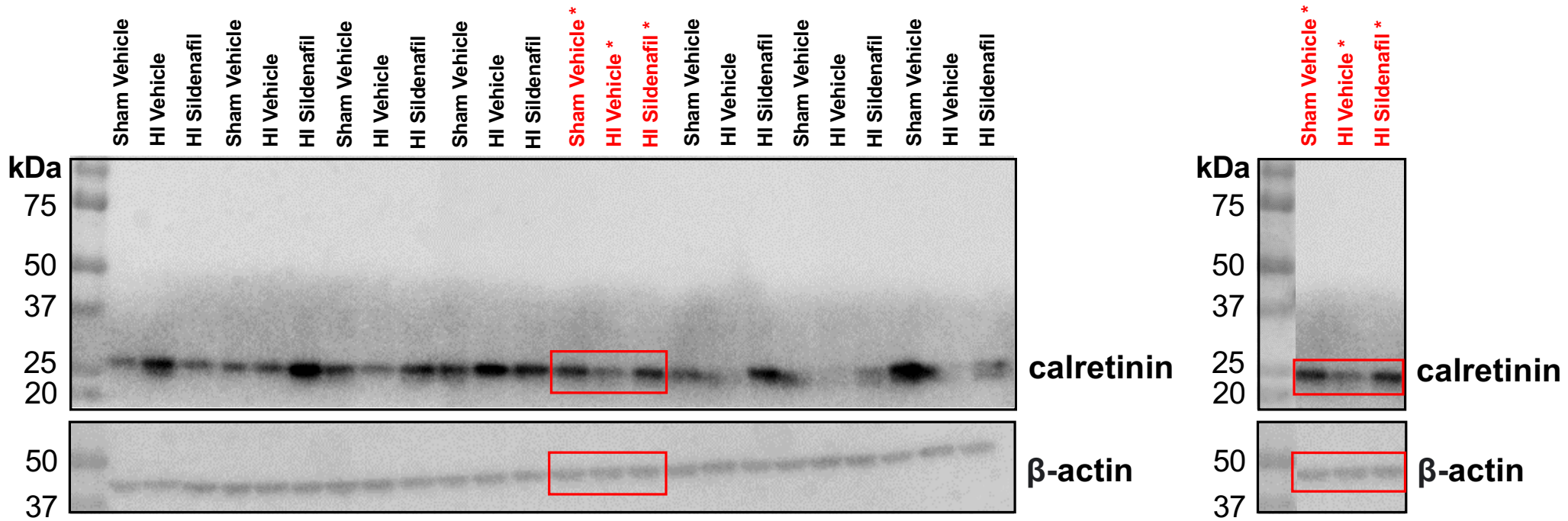


FIGURE 3E – P17: Western blotting for Calretinin at P17, showing full-length western blots (on left panel) and representative samples chosen to be cropped for main Figure 3 (on right panel). The regions of the original blots used in main figure have been denoted using red boxes.

P30

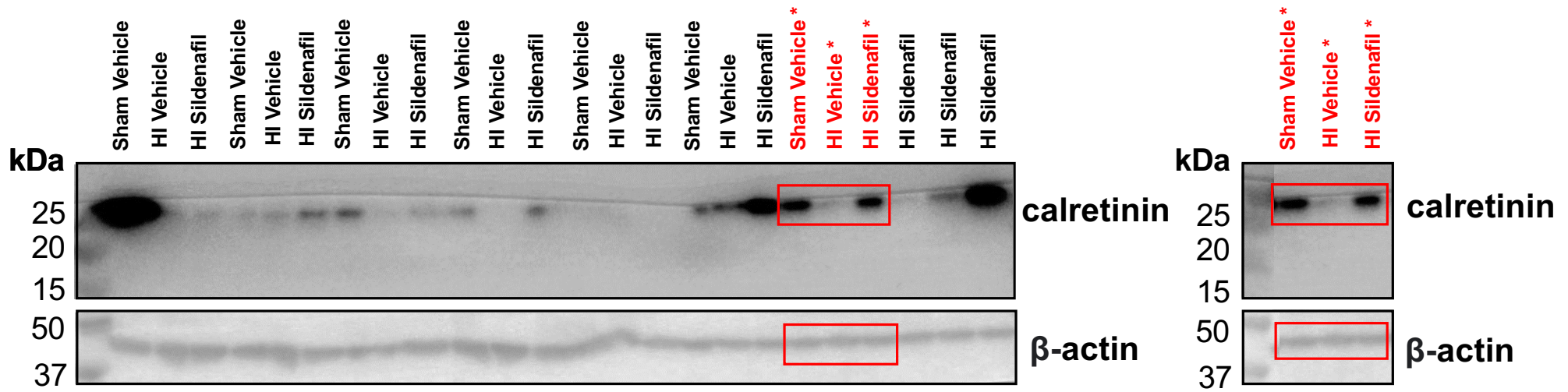


FIGURE 3E – P30: Western blotting for Calretinin at P30, showing full-length western blots (on left panel) and representative samples chosen to be cropped for main Figure 3 (on right panel). The regions of the original blots used in main figure have been denoted using red boxes.

Calbindin

P12

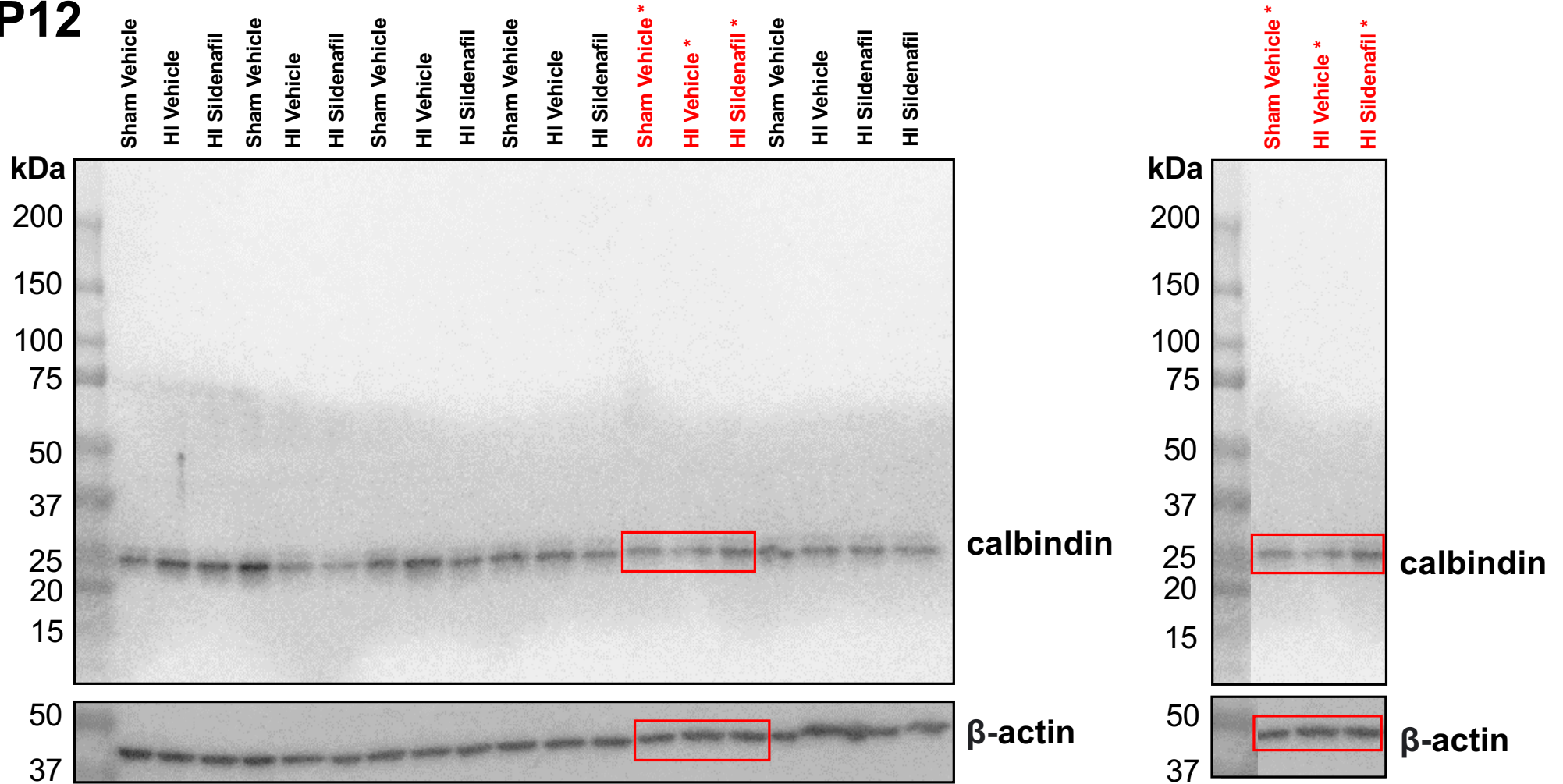


FIGURE 3F – P12: Western blotting for Calbindin at P12, showing full-length western blots (on left panel) and representative samples chosen to be cropped for main Figure 3 (on right panel). The regions of the original blots used in main figure have been denoted using red boxes.

P17

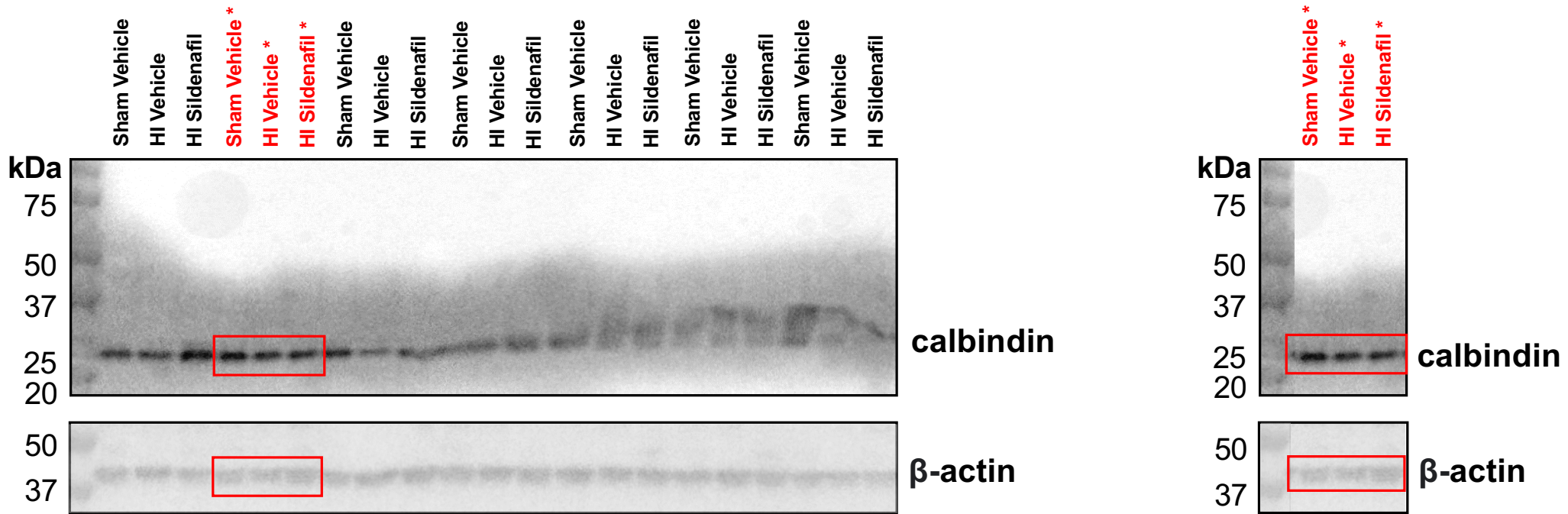


FIGURE 3F – P17: Western blotting for Calbindin at P17, showing full-length western blots (on left panel) and representative samples chosen to be cropped for main Figure 3 (on right panel). The regions of the original blots used in main figure have been denoted using red boxes.

P30

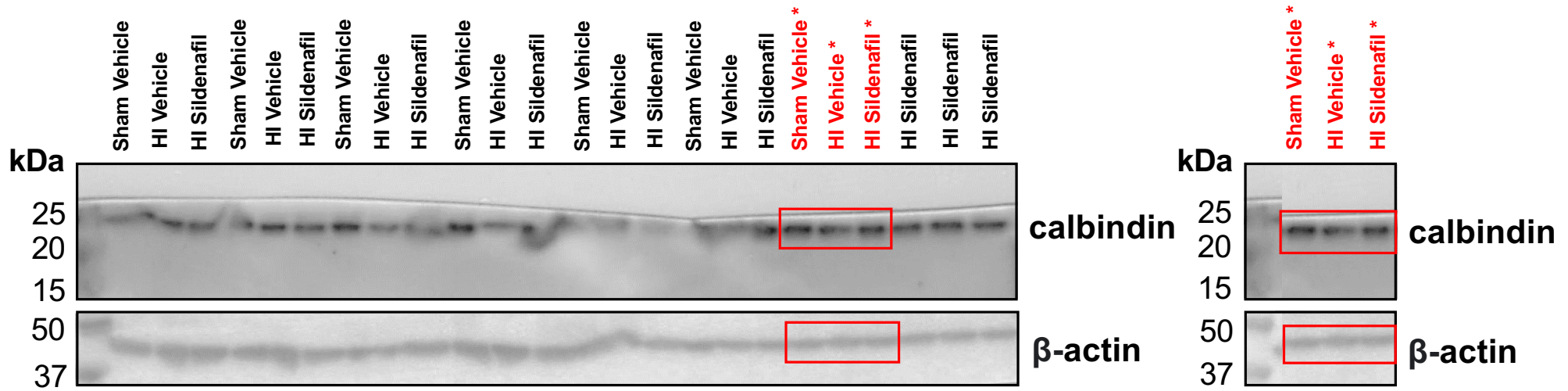


FIGURE 3F – P30: Western blotting for Calbindin at P30, showing full-length western blots (on left panel) and representative samples chosen to be cropped for main Figure 3 (on right panel). The regions of the original blots used in main figure have been denoted using red boxes.

PARP

P12

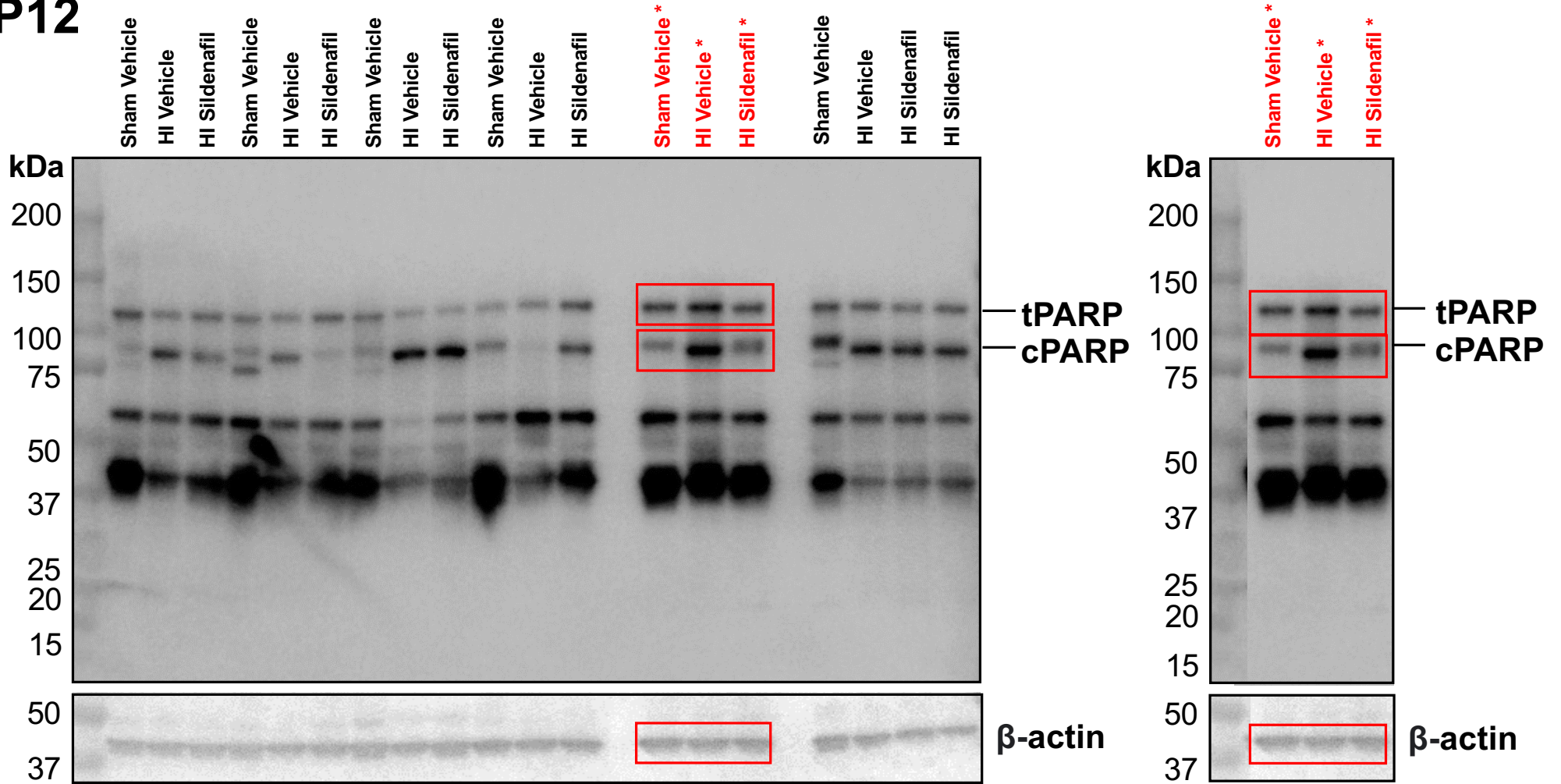


FIGURE 3G – P12: Western blotting for PARP at P12, showing full-length western blots (on left panel) and representative samples chosen to be cropped for main Figure 3 (on right panel). The regions of the original blots used in main figure have been denoted using red boxes.

P17

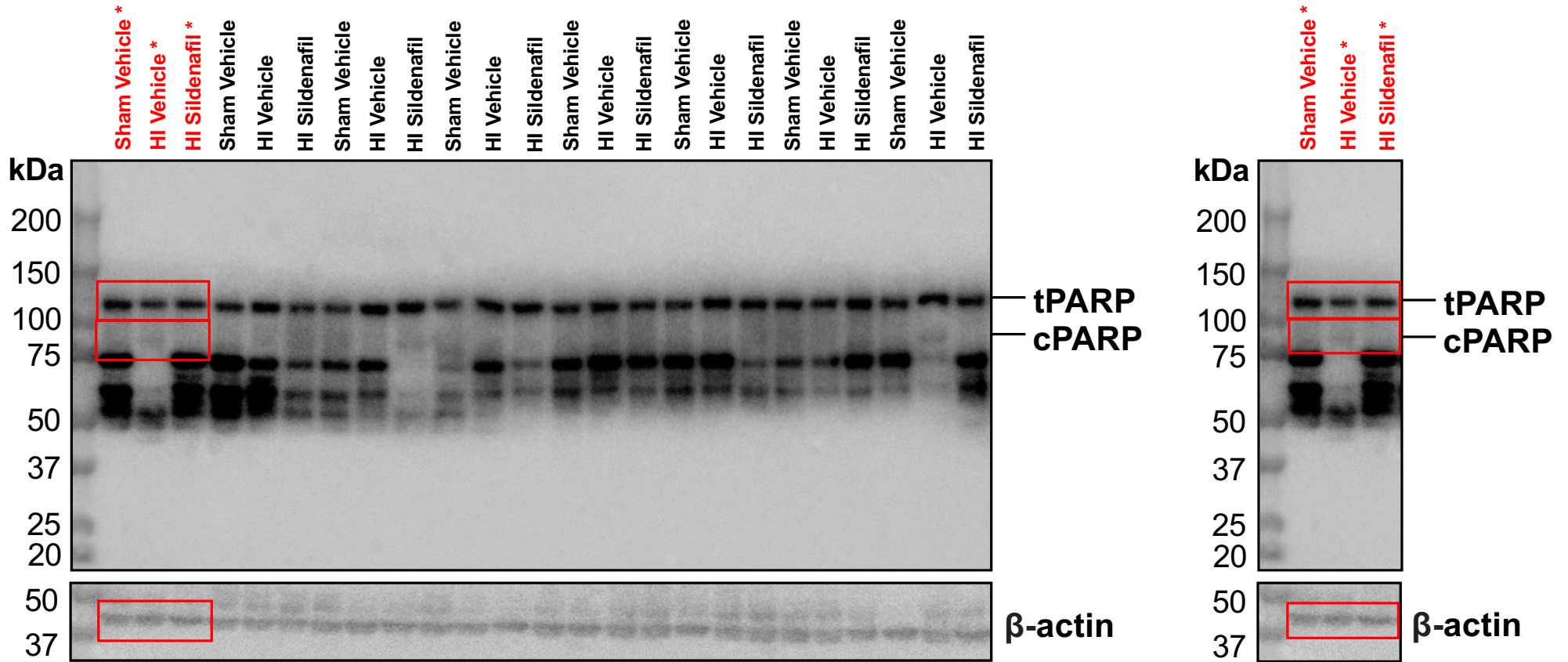


FIGURE 3G – P17: Western blotting for PARP at P17, showing full-length western blots (on left panel) and representative samples chosen to be cropped for main Figure 3 (on right panel). The regions of the original blots used in main figure have been denoted using red boxes.

P30

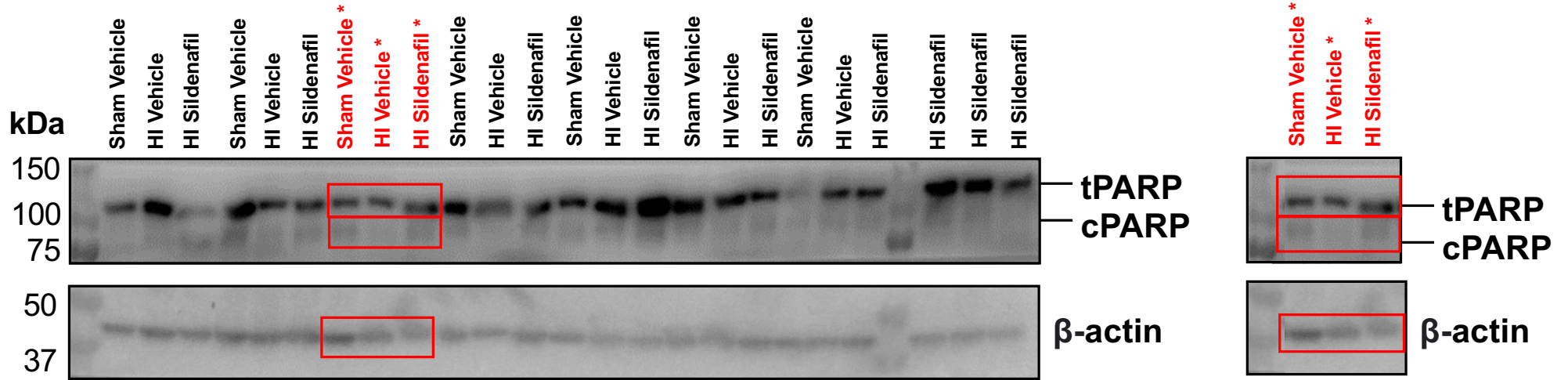


FIGURE 3G – P30: Western blotting for PARP at P30, showing full-length western blots (on left panel) and representative samples chosen to be cropped for main Figure 3 (on right panel). The regions of the original blots used in main figure have been denoted using red boxes.

GAP43

P12

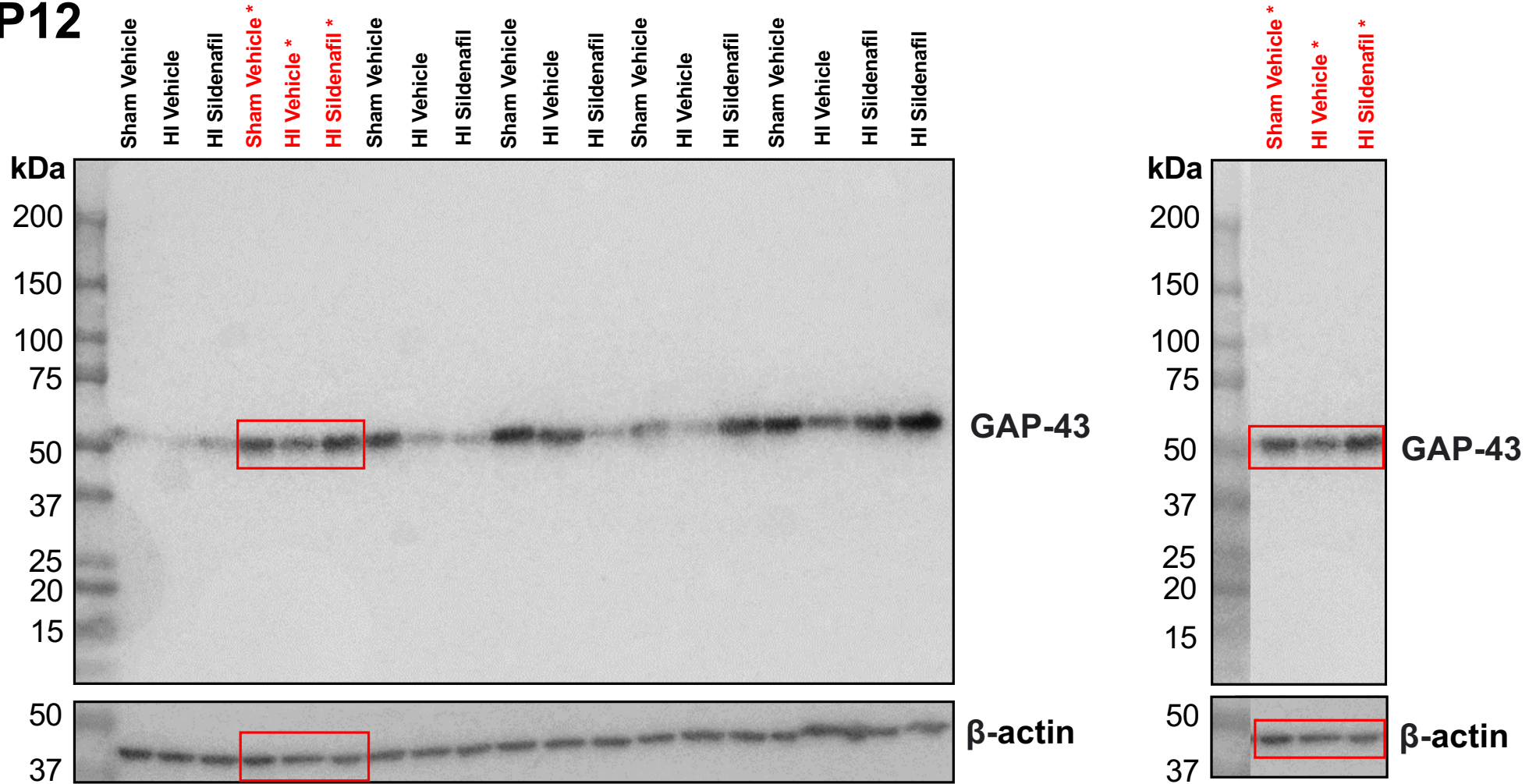


FIGURE 3H – P12: Western blotting for GAP-43 at P12, showing full-length western blots (on left panel) and representative samples chosen to be cropped for main Figure 3 (on right panel). The regions of the original blots used in main figure have been denoted using red boxes.

P17

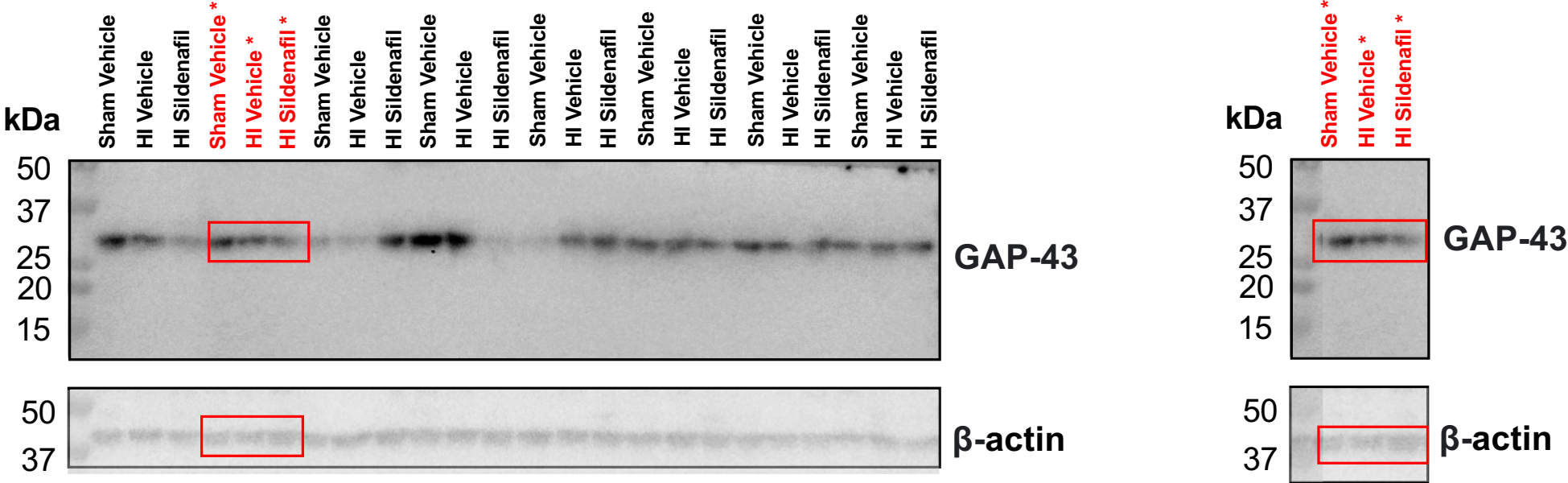


FIGURE 3H – P17: Western blotting for GAP-43 at P17, showing full-length western blots (on left panel) and representative samples chosen to be cropped for main Figure 3 (on right panel). The regions of the original blots used in main figure have been denoted using red boxes.

P30

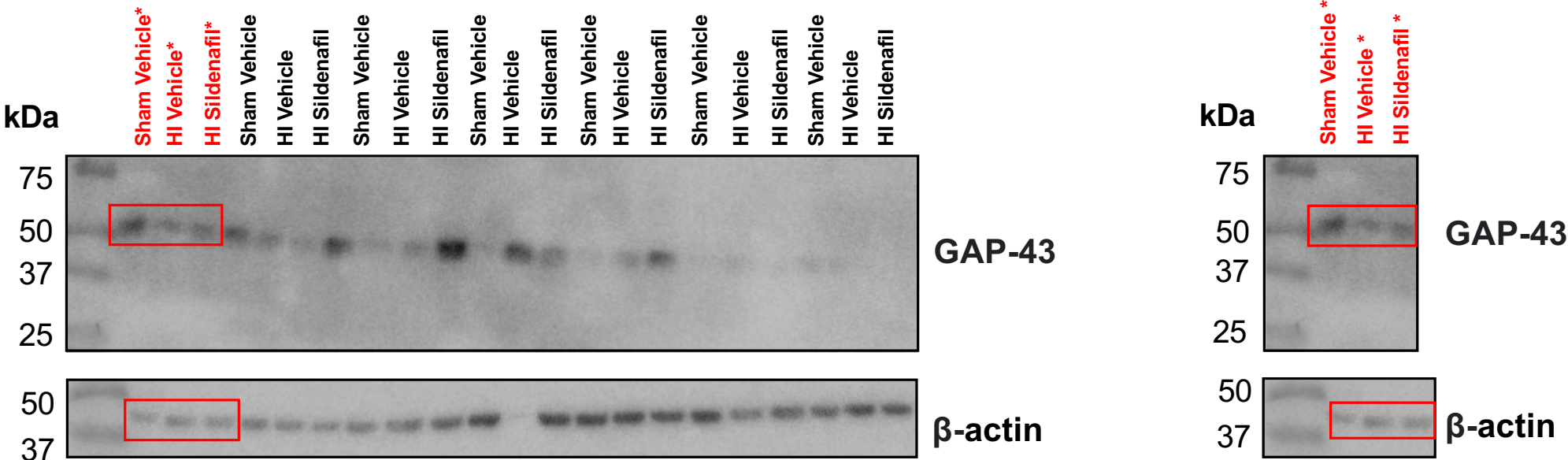


FIGURE 3H – P30: Western blotting for GAP-43 at P30, showing full-length western blots (on left panel) and representative samples chosen to be cropped for main Figure 3 (on right panel). The regions of the original blots used in main figure have been denoted using red boxes.

pAKT

P12

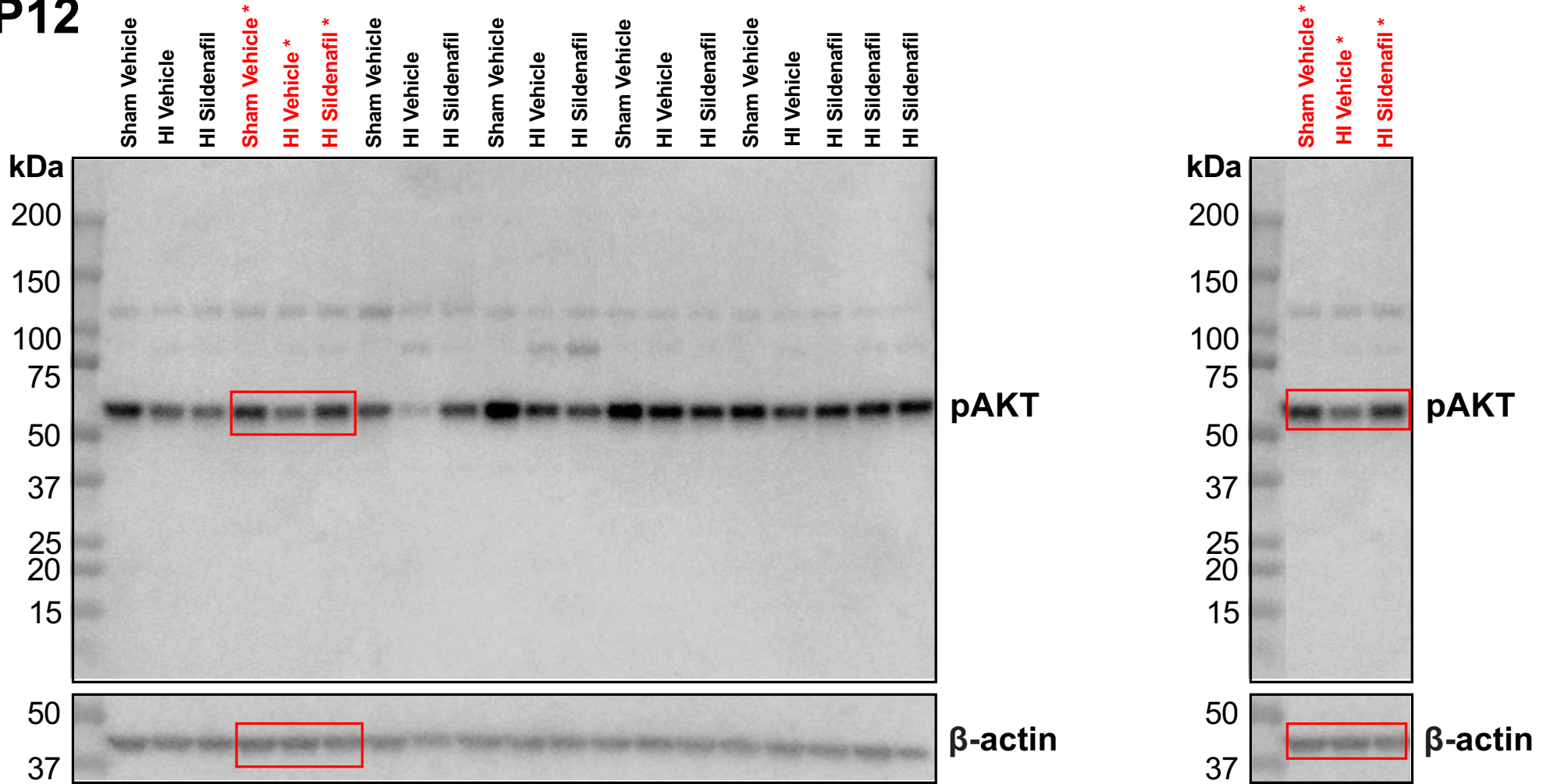


FIGURE 6A – P12: Western blotting for pAKT at P12, showing full-length western blots (on left panel) and representative samples chosen to be cropped for main Figure 3 (on right panel). The regions of the original blots used in main figure have been denoted using red boxes.

P17

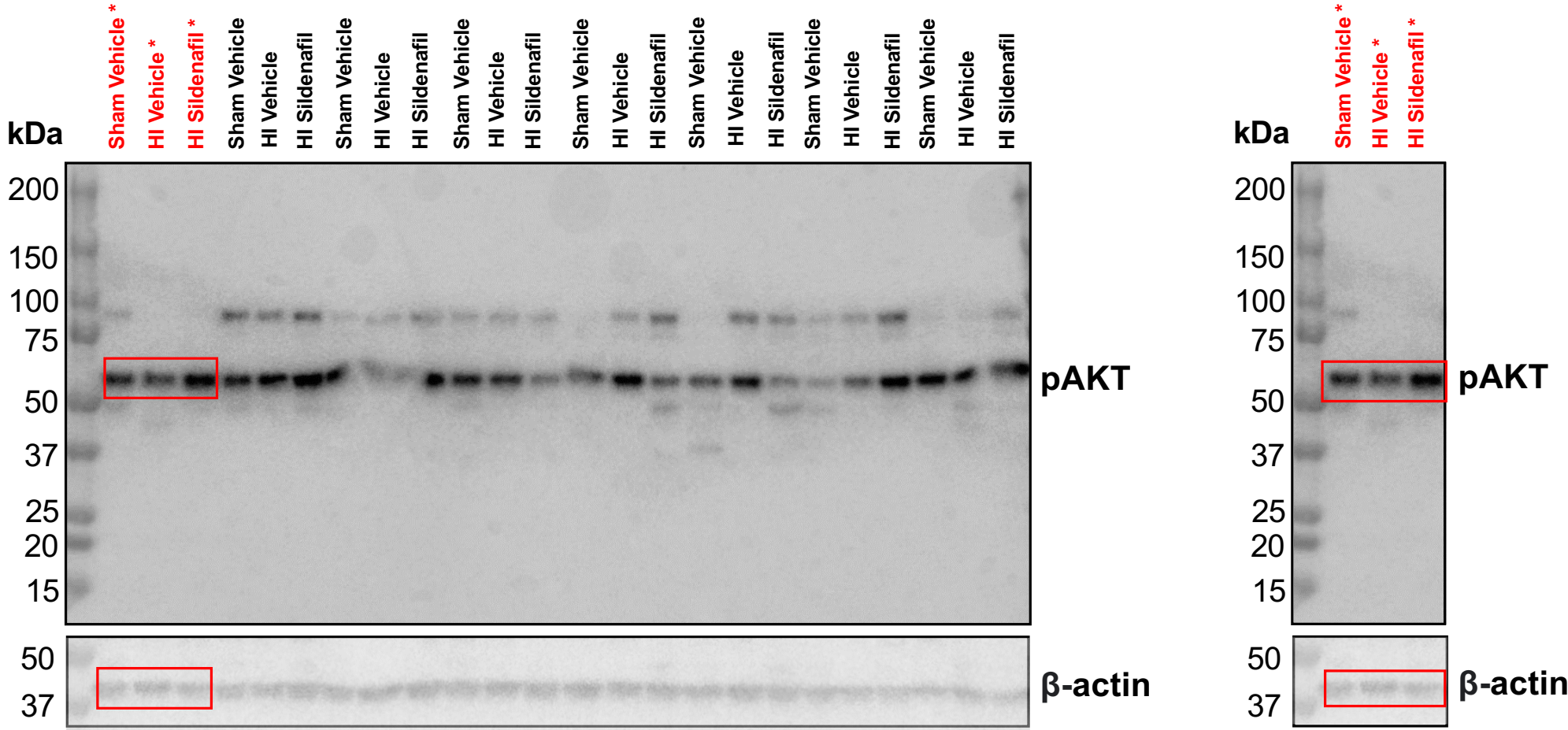


FIGURE 6A – P17: Western blotting for pAKT at P17, showing full-length western blots (on left panel) and representative samples chosen to be cropped for main Figure 3 (on right panel). The regions of the original blots used in main figure have been denoted using red boxes.

P30

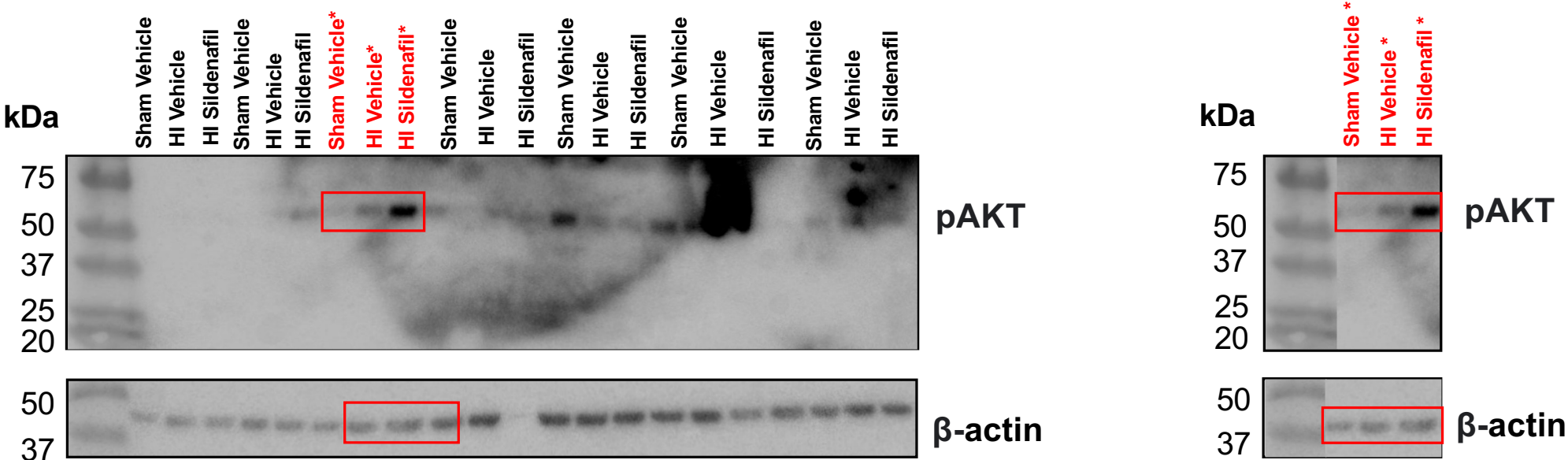


FIGURE 6A – P30: Western blotting for pAKT at P30, showing full-length western blots (on left panel) and representative samples chosen to be cropped for main Figure 3 (on right panel). The regions of the original blots used in main figure have been denoted using red boxes.

mTOR2481

P12

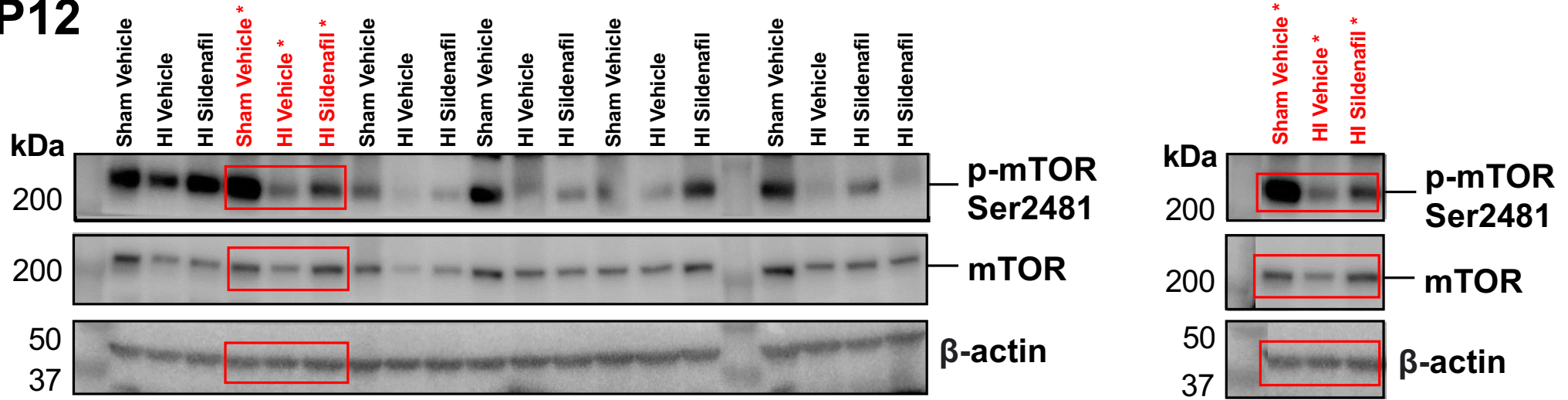


FIGURE 6B – P12: Western blotting for mTOR Ser 2481 at P12, showing full-length western blots (on left panel) and representative samples chosen to be cropped for main Figure 3 (on right panel). The regions of the original blots used in main figure have been denoted using red boxes.

P17

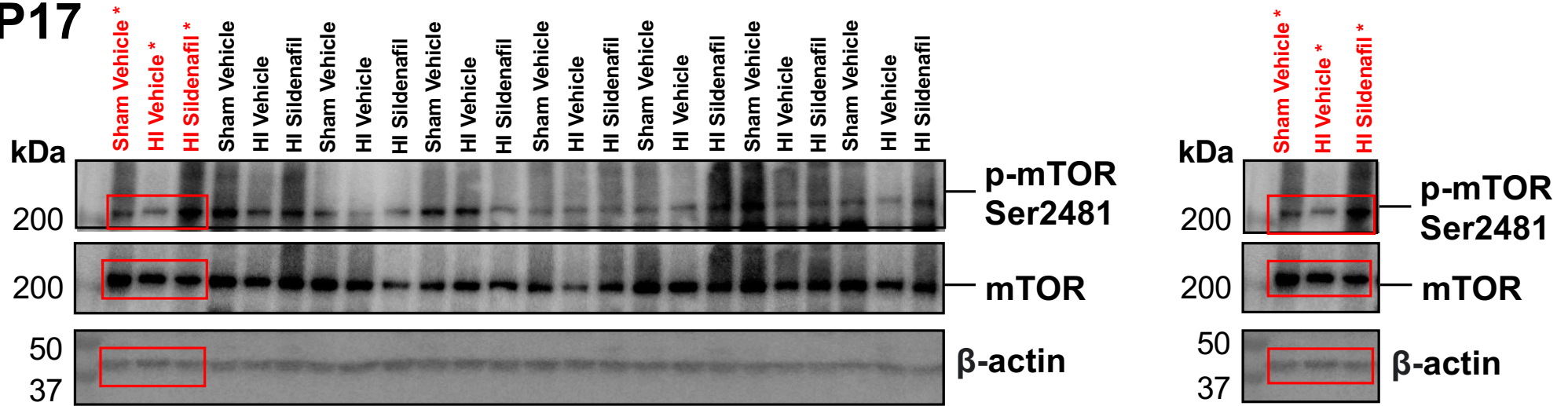


FIGURE 6B – P17: Western blotting for mTOR Ser 2481 at P17, showing full-length western blots (on left panel) and representative samples chosen to be cropped for main Figure 3 (on right panel). The regions of the original blots used in main figure have been denoted using red boxes.

P30

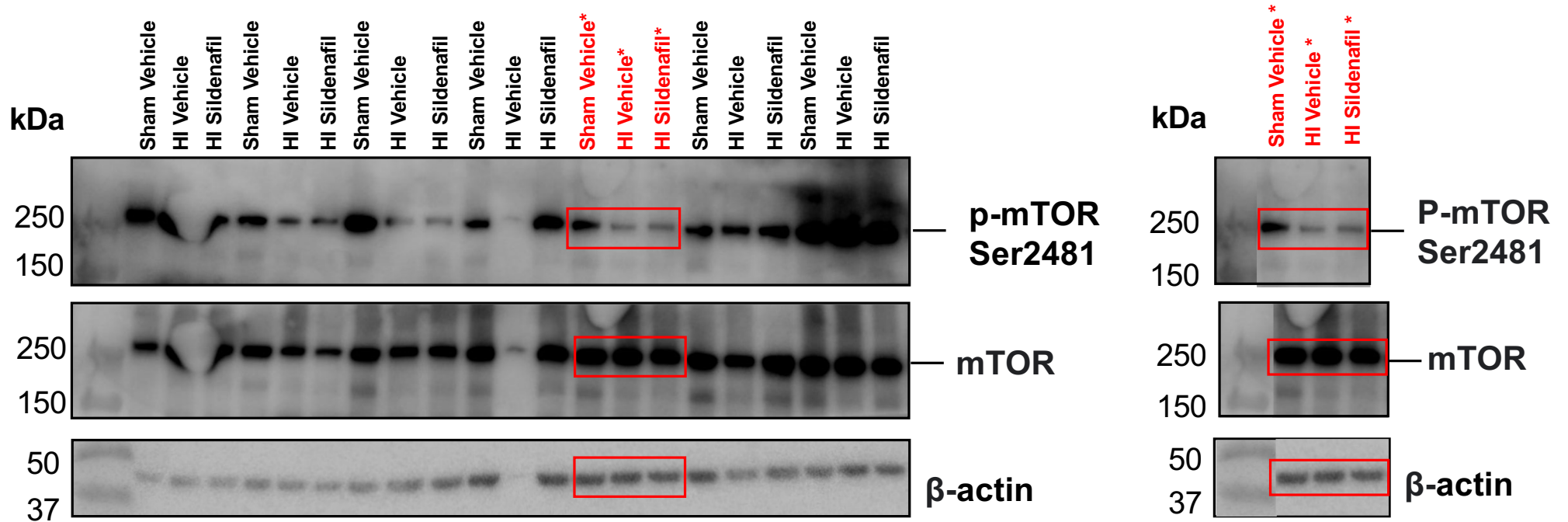


FIGURE 6B – P30: Western blotting for mTOR Ser 2481 at P30, showing full-length western blots (on left panel) and representative samples chosen to be cropped for main Figure 3 (on right panel). The regions of the original blots used in main figure have been denoted using red boxes.

mTOR 2448

P12

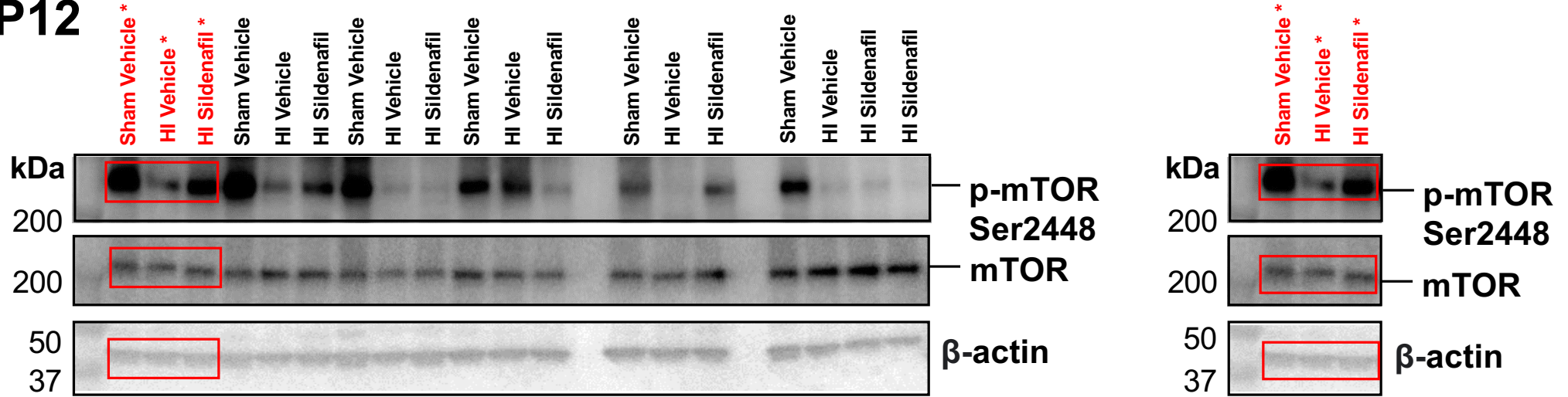


FIGURE 6C – P12: Western blotting for mTOR Ser 2448 at P12, showing full-length western blots (on left panel) and representative samples chosen to be cropped for main Figure 3 (on right panel). The regions of the original blots used in main figure have been denoted using red boxes.

P17

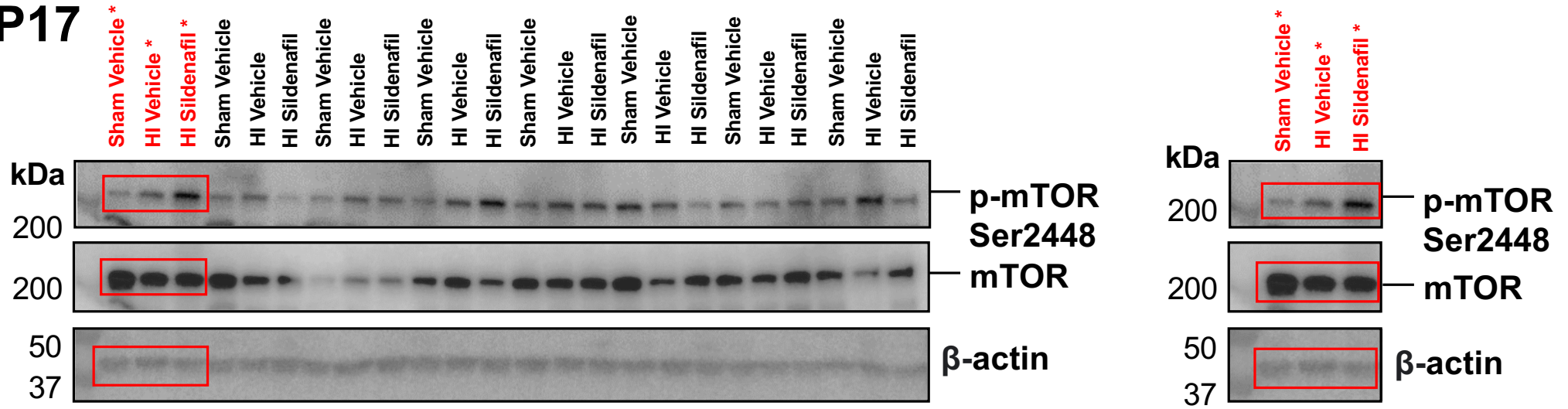


FIGURE 6C – P17: Western blotting for mTOR Ser 2448 at P17, showing full-length western blots (on left panel) and representative samples chosen to be cropped for main Figure 3 (on right panel). The regions of the original blots used in main figure have been denoted using red boxes.

P30

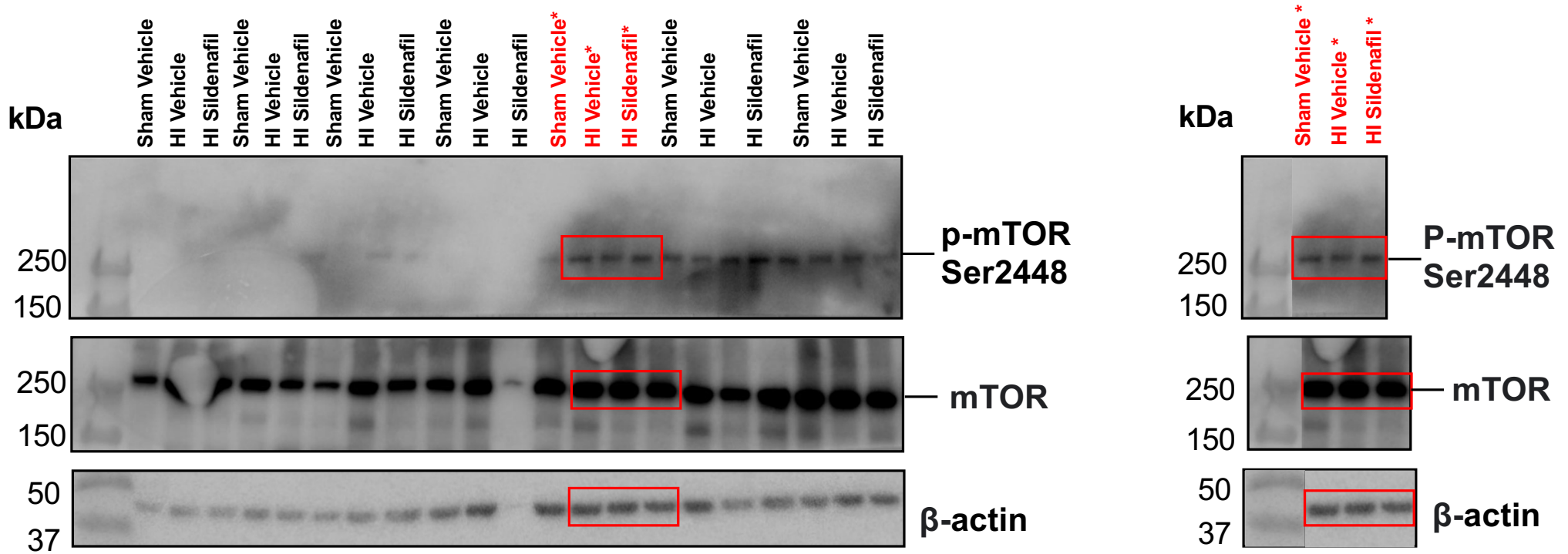


FIGURE 6C – P30: Western blotting for mTOR Ser 2448 at P30, showing full-length western blots (on left panel) and representative samples chosen to be cropped for main Figure 3 (on right panel). The regions of the original blots used in main figure have been denoted using red boxes.