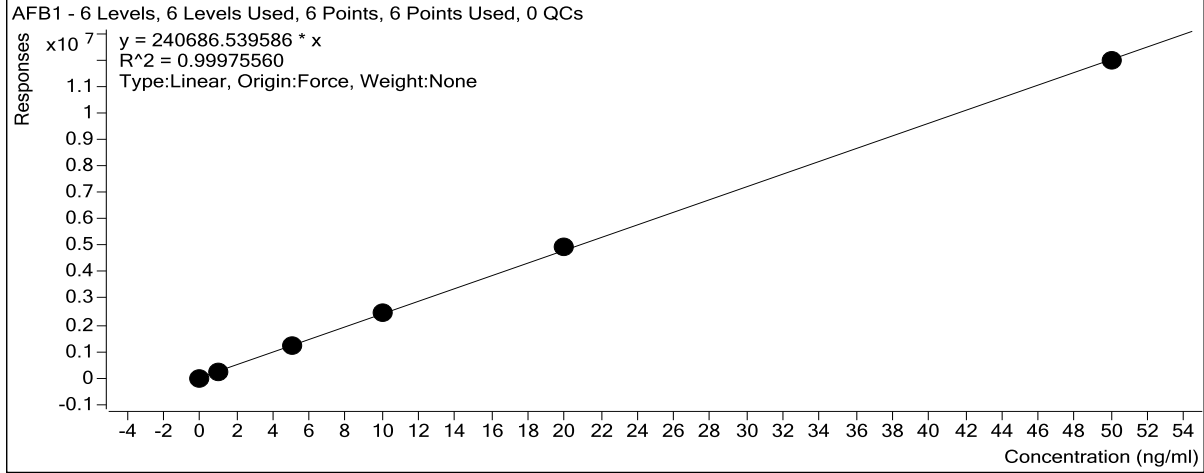


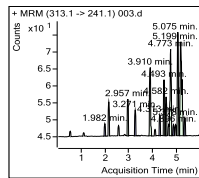
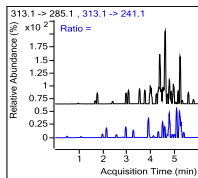
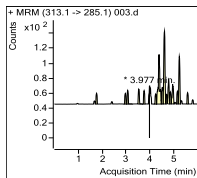
**Batch Data Path** H:\MassHunter\Data\2021\08\AF\20210824\QuantResults\20210824.batch.bin  
**Analysis Time** 8/25/2021 2:10 PM **Analyst Name** KMKZ-EA03-02\Admin  
**Report Time** 8/25/2021 2:27 PM **Reporter Name** KMKZ-EA03-02\Admin  
**Last Calib Update** 8/25/2021 2:10 PM **Batch State** Processed

AFB1

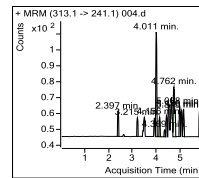
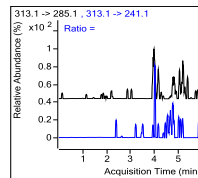
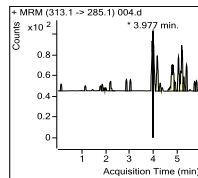


Data	Acq Time	Type	Name	Compound	ISTD	RT	Final Conc	Resp	ISTD Resp
003.d	2021/8/24 11:43	Sample	SJKB	AFB1		3.977	0.0000 ng/ml	0	
004.d	2021/8/24 11:50	Sample	GCKB	AFB1		3.977	0.0000 ng/ml	0	
007.d	2021/8/24 12:10	Calibration	STD-1	AFB1		3.955	0.0252 ng/ml	6059	
008.d	2021/8/24 12:16	Calibration	STD-2	AFB1		3.955	0.8574 ng/ml	206362	
009.d	2021/8/24 12:23	Calibration	STD-3	AFB1		3.955	4.9468 ng/ml	1190618	
010.d	2021/8/24 12:30	Calibration	STD-4	AFB1		3.955	10.3227 ng/ml	2484529	
011.d	2021/8/24 12:37	Calibration	STD-5	AFB1		3.955	20.4938 ng/ml	4932589	
012.d	2021/8/24 12:43	Calibration	STD-6	AFB1		3.955	49.7461 ng/ml	11973218	
014.d	2021/8/24 12:57	Sample	WS2104719006-ZK	AFB1		3.955	5.0413 ng/ml	1213373	
028.d	2021/8/24 16:32	Sample	WS2104719006 -TDs	AFB1		4.325	0.0000 ng/ml	0	
029.d	2021/8/24 16:39	Sample	WS2104719007 -T. koningii FTDs	AFB1		4.336	0.0000 ng/ml	0	
030.d	2021/8/24 16:46	Sample	WS2104719008 -A.niger FTDs	AFB1		4.056	0.0000 ng/ml	0	
032.d	2021/8/24 17:01	Sample	STD-3-RR	AFB1		3.955	4.2267 ng/ml	1017320	

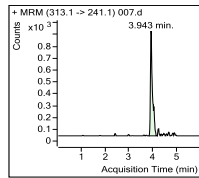
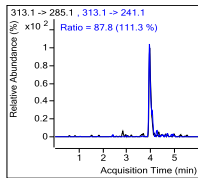
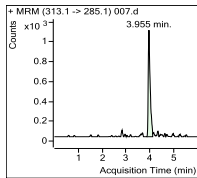
SJKB



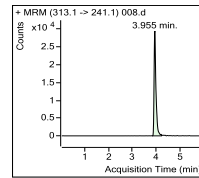
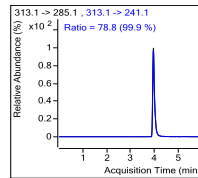
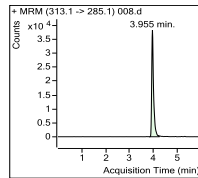
GCKB



STD-1

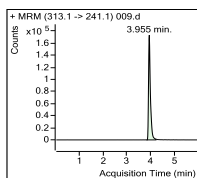
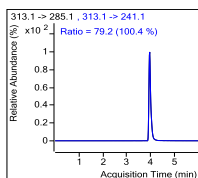
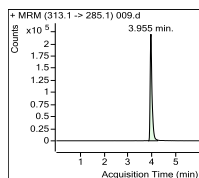


STD-2

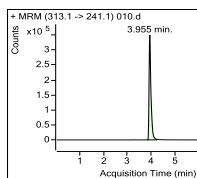
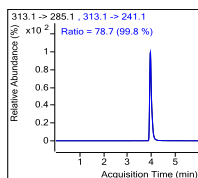
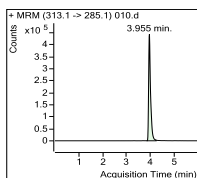


# Quantitative Analysis Sample Report

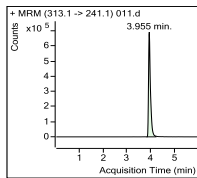
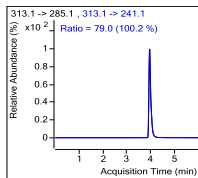
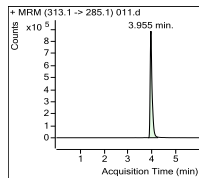
## STD-3



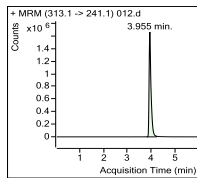
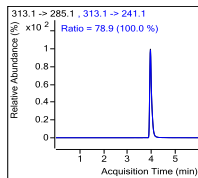
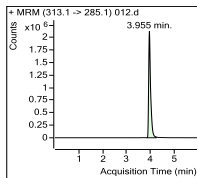
## STD-4



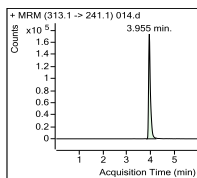
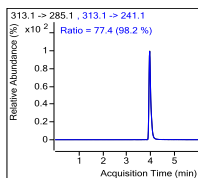
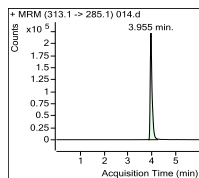
## STD-5



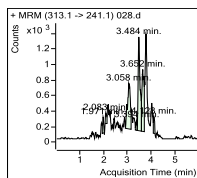
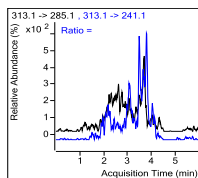
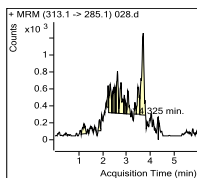
## STD-6



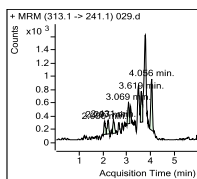
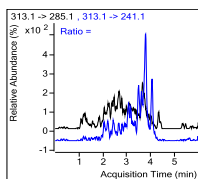
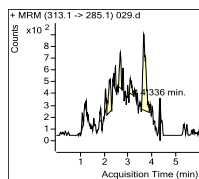
## WS2104719006-ZK



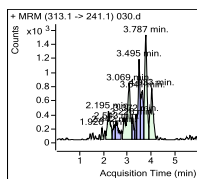
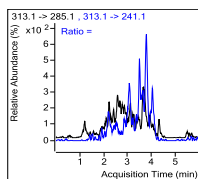
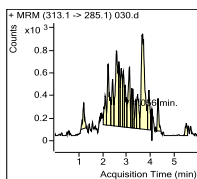
## WS2104719006



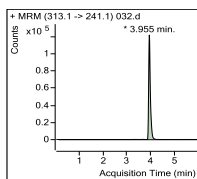
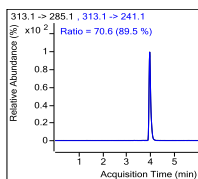
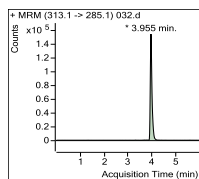
## WS2104719007



## WS2104719008



## STD-3-RR



# T-2 toxin

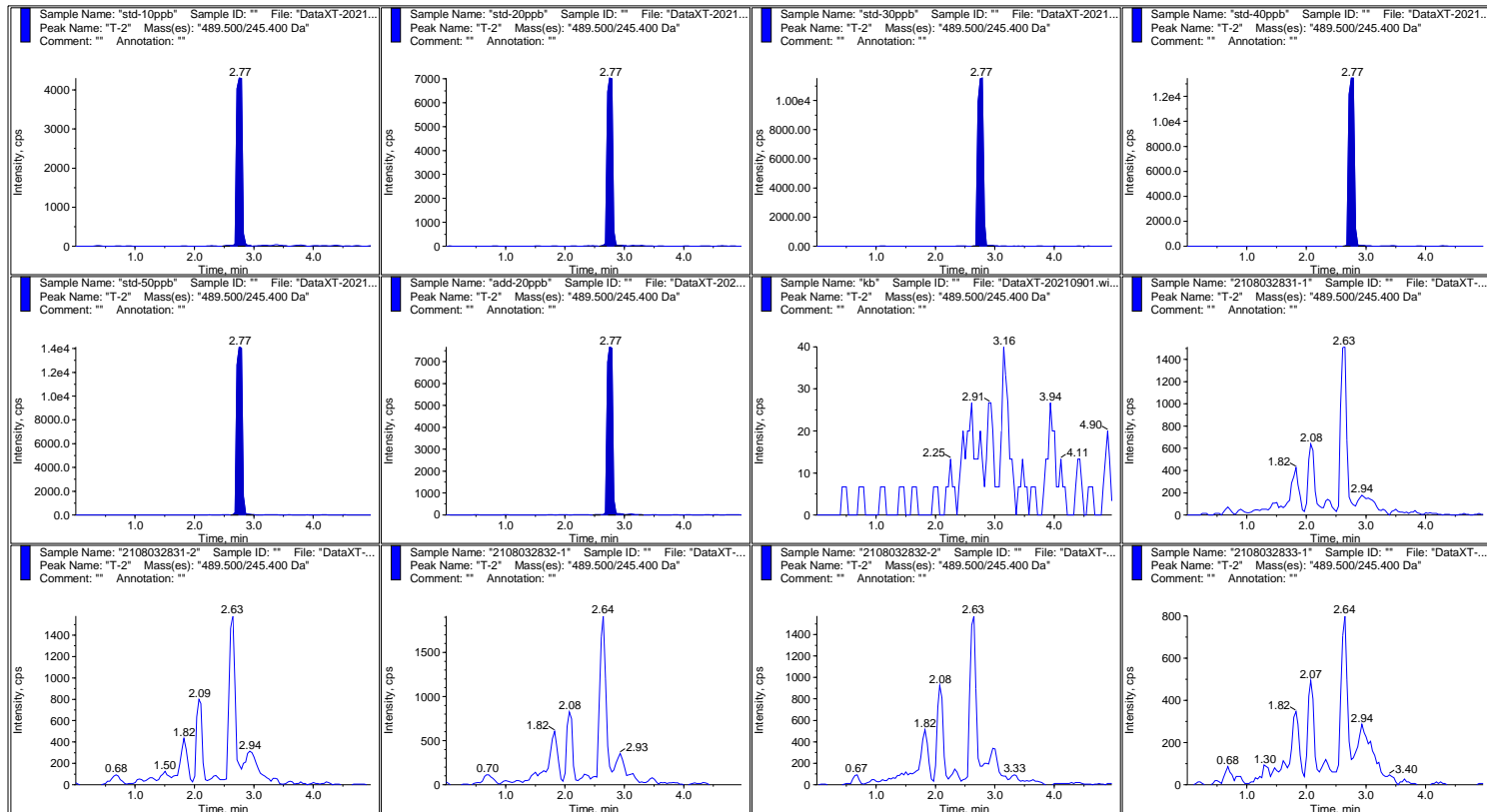
Batch Name: XT-20210901.dab

Page 1 of 1

	Sample Name	Sample Type	Acquisition Date	Analyte Peak Name	Analyte Peak Area (counts)	Analyte Peak Height (cps)	Analyte Concentration (ng/mL)	Calculated Concentration (ng/mL)	Accuracy (%)
1	std-10ppb	Standard	9/4/2021 4:07:22 PM	T-2	2.38e+004	3.91e+003	10.0	11.5	115.
2	std-20ppb	Standard	9/4/2021 4:12:46 PM	T-2	4.59e+004	7.09e+003	20.0	22.2	111.
3	std-30ppb	Standard	9/4/2021 4:18:14 PM	T-2	7.02e+004	1.25e+004	30.0	34.0	113.
4	std-40ppb	Standard	9/4/2021 4:23:40 PM	T-2	8.78e+004	1.50e+004	40.0	42.4	106.
5	std-50ppb	Standard	9/4/2021 4:29:07 PM	T-2	9.20e+004	1.43e+004	50.0	44.5	89.0
6	add-20ppb	Quality Control	9/4/2021 4:34:31 PM	T-2	4.38e+004	7.17e+003	20.0	21.2	106.
7	kb	Unknown	9/4/2021 4:39:59 PM	T-2	0.00e+000	0.00e+000	N/A	No Peak	N/A
8	2108032831-1 <small>-TDs</small>	Unknown	9/4/2021 4:45:27 PM	T-2	0.00e+000	0.00e+000	N/A	No Peak	N/A
9	2108032831-2	Unknown	9/4/2021 4:50:53 PM	T-2	0.00e+000	0.00e+000	N/A	No Peak	N/A
10	2108032832-1 <small>-T, kb</small>	Unknown	9/4/2021 4:56:21 PM	T-2	0.00e+000	0.00e+000	N/A	No Peak	N/A
11	2108032832-2 <small>-FTDs</small>	Unknown	9/4/2021 5:01:48 PM	T-2	0.00e+000	0.00e+000	N/A	No Peak	N/A
12	2108032833-1	Unknown	9/4/2021 5:07:13 PM	T-2	0.00e+000	0.00e+000	N/A	No Peak	N/A
13	2108032833-2 <small>-Ani</small>	Unknown	9/4/2021 5:12:42 PM	T-2	0.00e+000	0.00e+000	N/A	No Peak	N/A

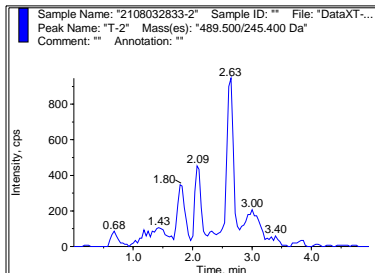
郑爽柔

刘福友



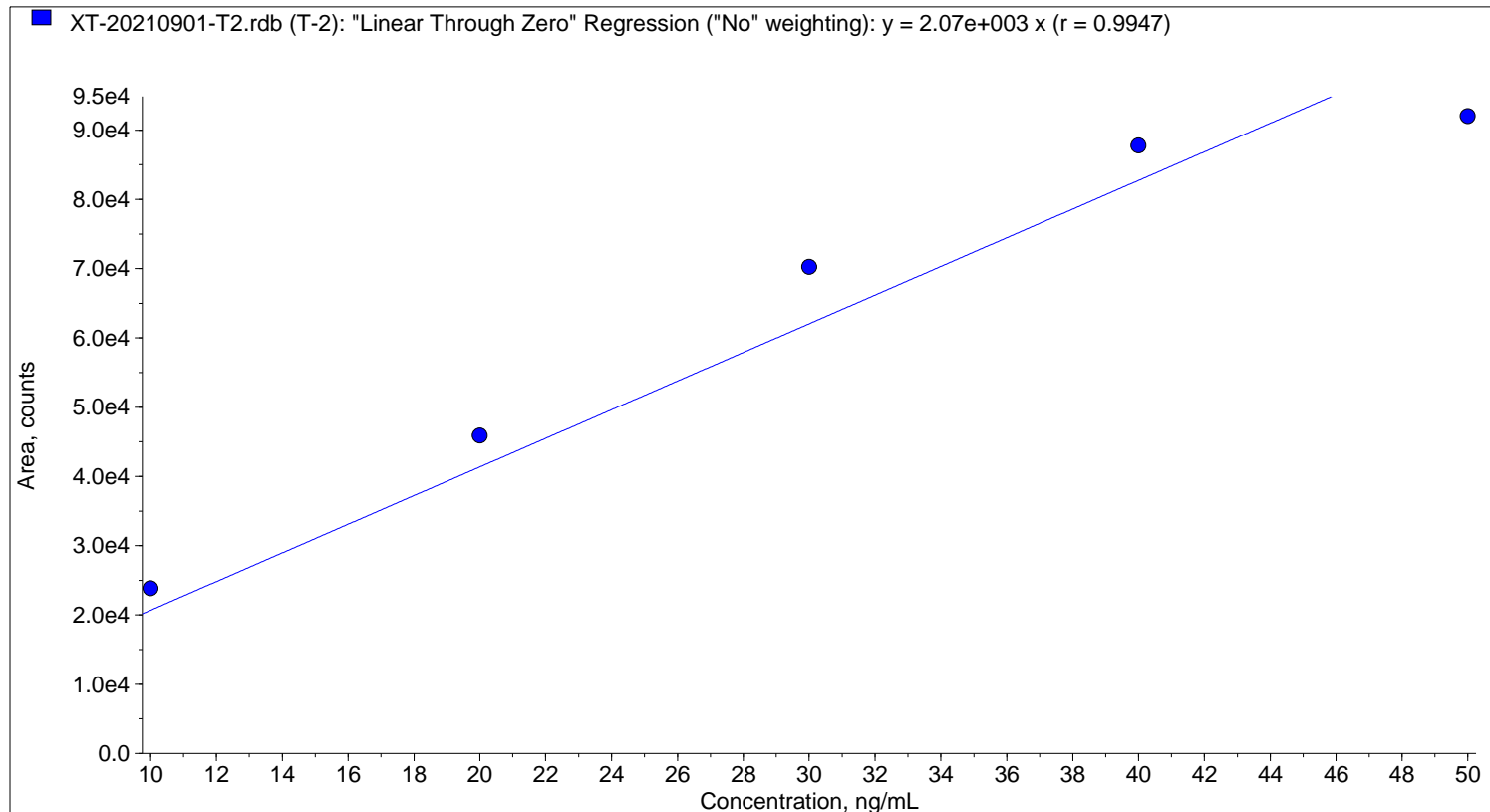
郑奕柔

刘福友



郑奕柔

刘福友

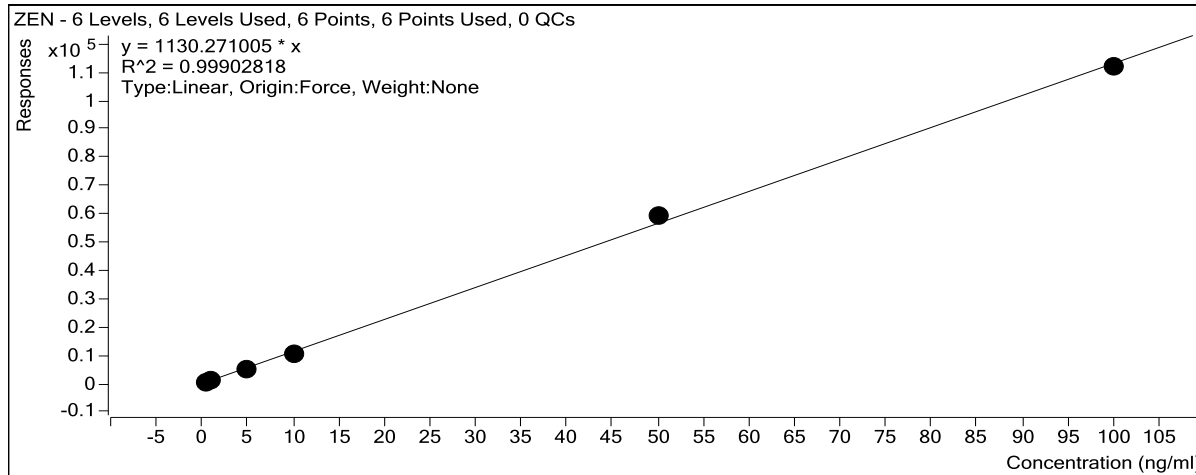


郑奕柔

刘福友

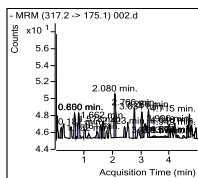
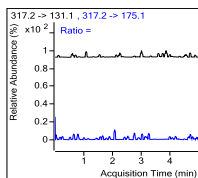
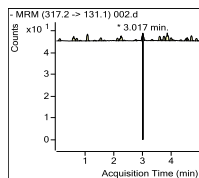
**Batch Data Path** H:\MassHunter\Data\2021\08\ZEN\20210824\QuantResults\20210824.batch.bin  
**Analysis Time** 8/25/2021 2:32 PM **Analyst Name** KMKZ-EA03-02\Admin  
**Report Time** 8/25/2021 2:33 PM **Reporter Name** KMKZ-EA03-02\Admin  
**Last Calib Update** 8/25/2021 2:32 PM **Batch State** Processed

ZEN

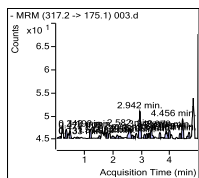
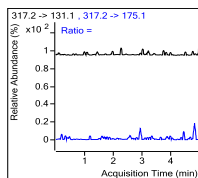
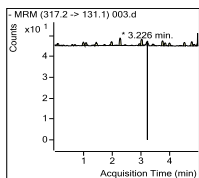


Data	Acq Time	Type	Name	Compou nd	ISTD	RT	Final Conc	Resp	ISTD Resp
002.d	2021/8/24 17:17	Sample	SJKB	ZEN		3.017	0.0000 ng/ml	0	
003.d	2021/8/24 17:22	Sample	GCKB	ZEN		3.226	0.0000 ng/ml	0	
005.d	2021/8/24 17:34	Calibration	STD-1	ZEN		3.151	0.3363 ng/ml	380	
006.d	2021/8/24 17:40	Calibration	STD-2	ZEN		3.151	0.8812 ng/ml	996	
007.d	2021/8/24 17:45	Calibration	STD-3	ZEN		3.151	4.5018 ng/ml	5088	
008.d	2021/8/24 17:51	Calibration	STD-4	ZEN		3.151	9.5068 ng/ml	10745	
009.d	2021/8/24 17:57	Calibration	STD-5	ZEN		3.151	52.4388 ng/ml	59270	
010.d	2021/8/24 18:02	Calibration	STD-6	ZEN		3.151	98.8569 ng/ml	111735	
012.d	2021/8/24 18:14	Sample	WS2104719006-ZK	ZEN		3.151	58.6614 ng/ml	66303	
013.d	2021/8/24 18:20	Sample	WS2104719006 -TDs	ZEN		3.143	0.0000 ng/ml	0	
014.d	2021/8/24 18:25	Sample	WS2104719007 -T. koningii FTDs	ZEN		3.151	0.0000 ng/ml	0	
015.d	2021/8/24 18:31	Sample	WS2104719008 -A.niger FTDs	ZEN		3.117	0.0000 ng/ml	0	
023.d	2021/8/24 19:24	Sample	STD-4-R	ZEN		3.159	9.9469 ng/ml	11243	

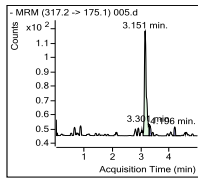
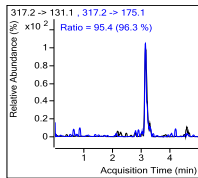
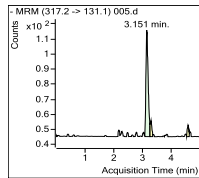
SJKB



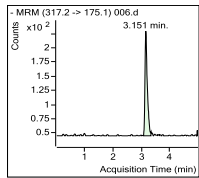
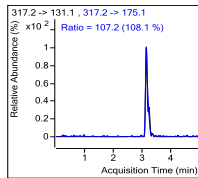
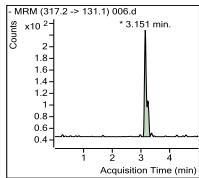
GCKB



STD-1

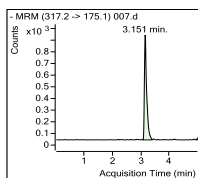
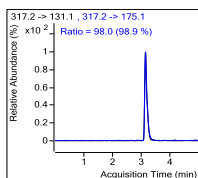
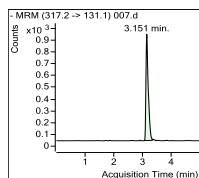


STD-2

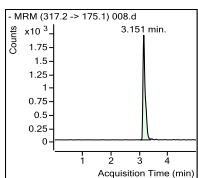
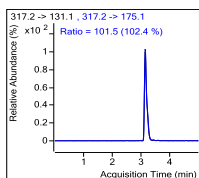
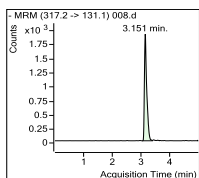


# Quantitative Analysis Sample Report

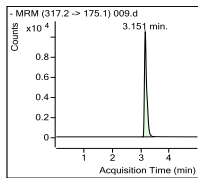
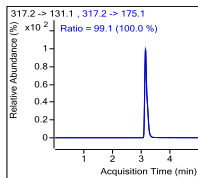
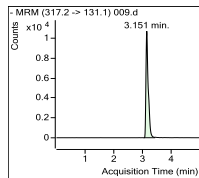
## STD-3



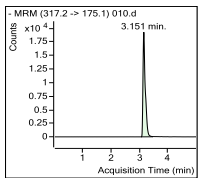
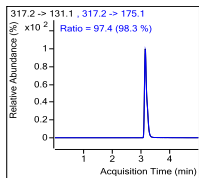
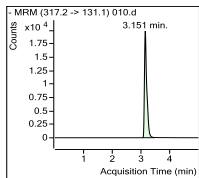
## STD-4



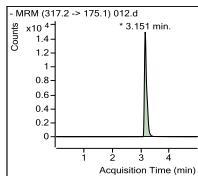
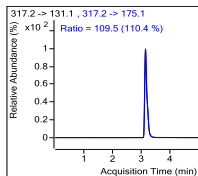
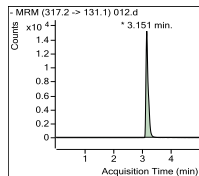
## STD-5



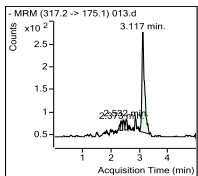
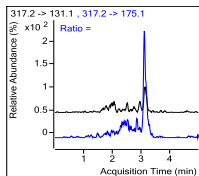
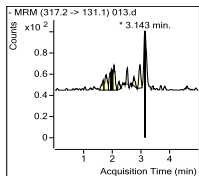
## STD-6



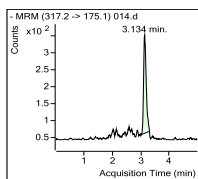
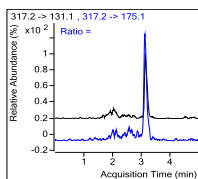
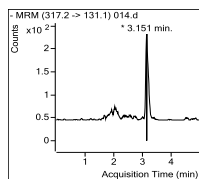
## WS2104719006-ZK



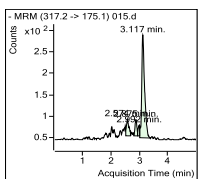
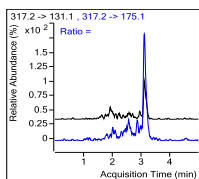
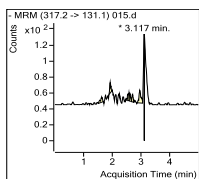
## WS2104719006



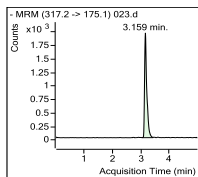
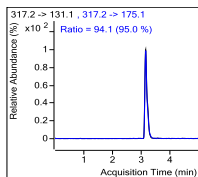
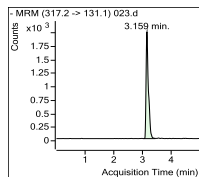
## WS2104719007



## WS2104719008



## STD-4-R





# Deoxynivalenol

## 样品统计报告

序列 采集者 test 序列 采集日期 9/1/2021 9:33:26 AM

采集方法 呕吐毒素.amx 数据 分析方法 \*呕吐毒素.pmx

采集方法修改日期 6/20/2021 11:16:20 AM 仪器 名称 KMKZEA01-01

化合物: 呕吐毒素

信号: DAD1A

预期保留时间: 5.924

相关系数: 0.999681

残留: 1.73705

RF RSD%:

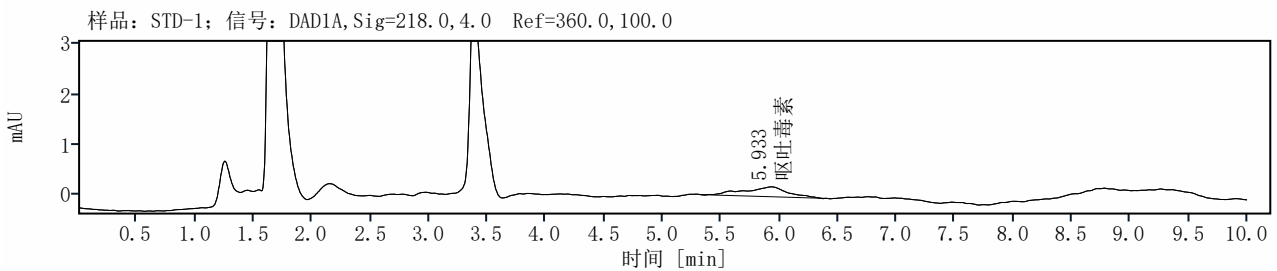
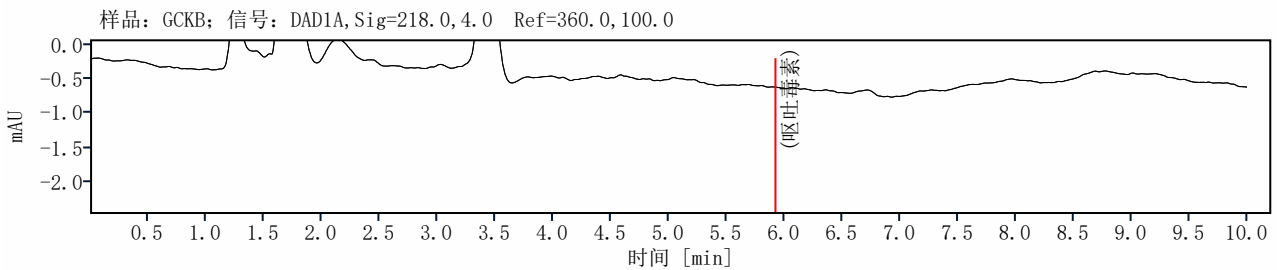
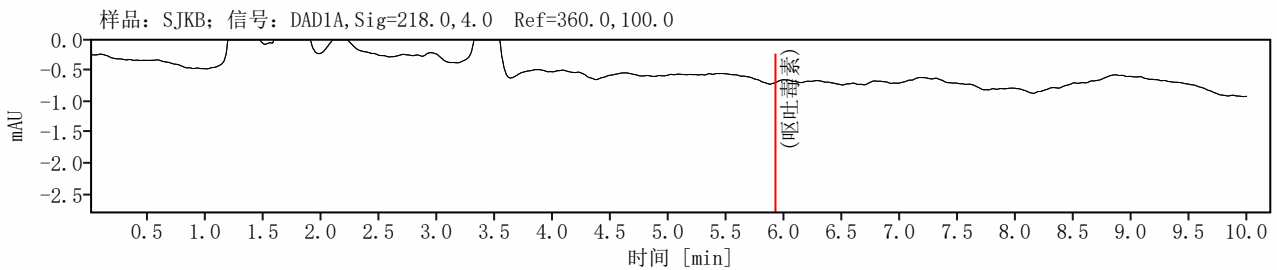
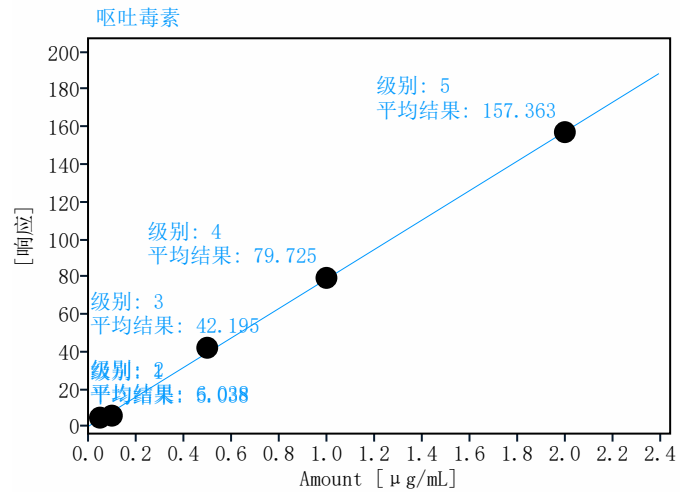
公式:  $y = ax + b$

a: 78.81751

b: 0.44612

c: 0.00000

d:



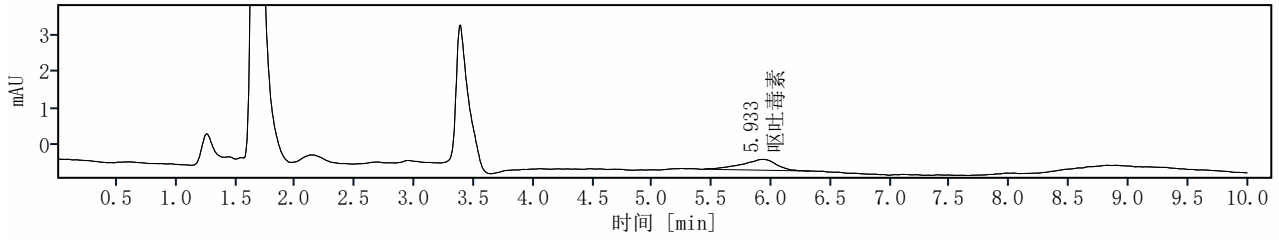
检验员:

复核人:

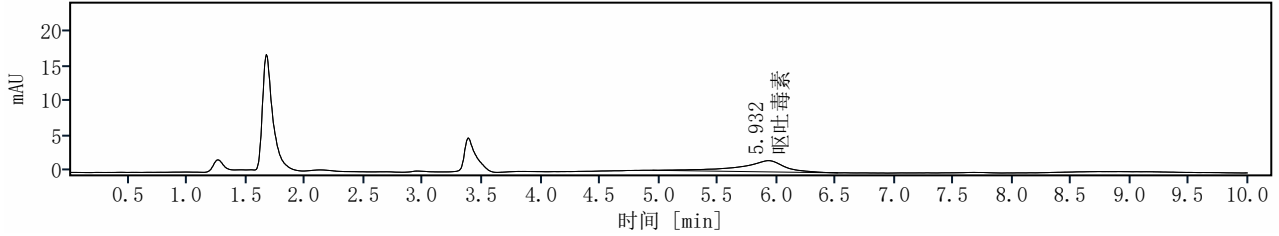
复核日期:

# 样品统计报告

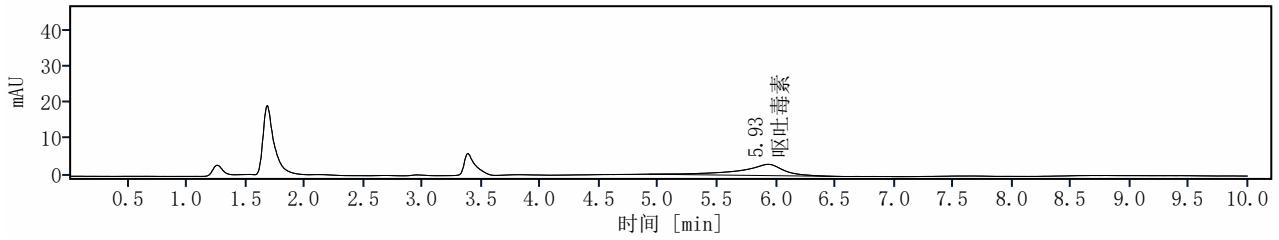
样品: STD-2; 信号: DAD1A, Sig=218.0, 4.0 Ref=360.0, 100.0



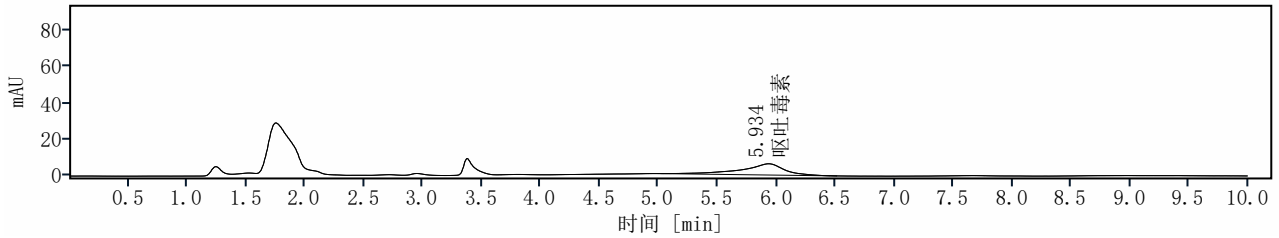
样品: STD-3; 信号: DAD1A, Sig=218.0, 4.0 Ref=360.0, 100.0



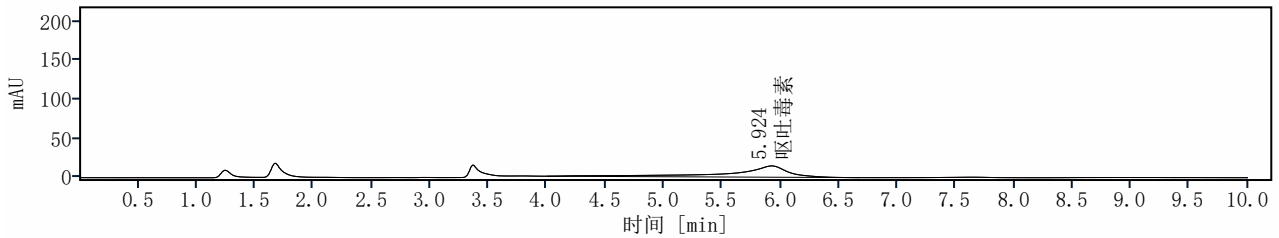
样品: STD-4; 信号: DAD1A, Sig=218.0, 4.0 Ref=360.0, 100.0



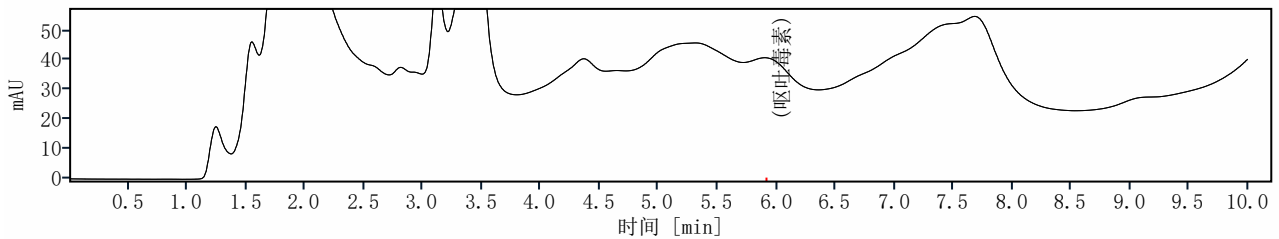
样品: STD-5; 信号: DAD1A, Sig=218.0, 4.0 Ref=360.0, 100.0



样品: STD-6; 信号: DAD1A, Sig=218.0, 4.0 Ref=360.0, 100.0



样品: WS2104896001; 信号: DAD1A, Sig=218.0, 4.0 Ref=360.0, 100.0



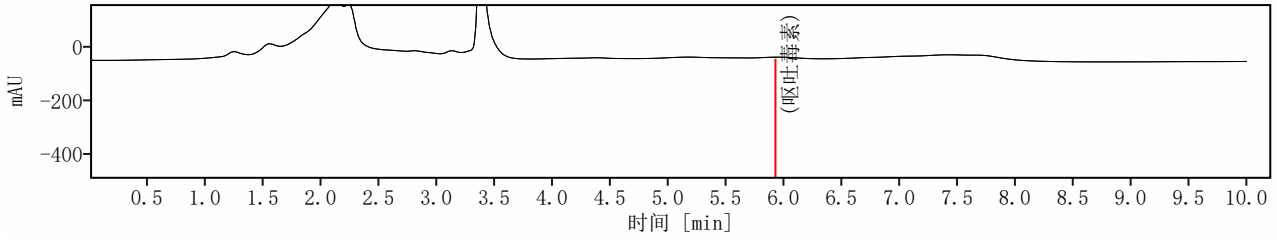
检验员:

复核人:

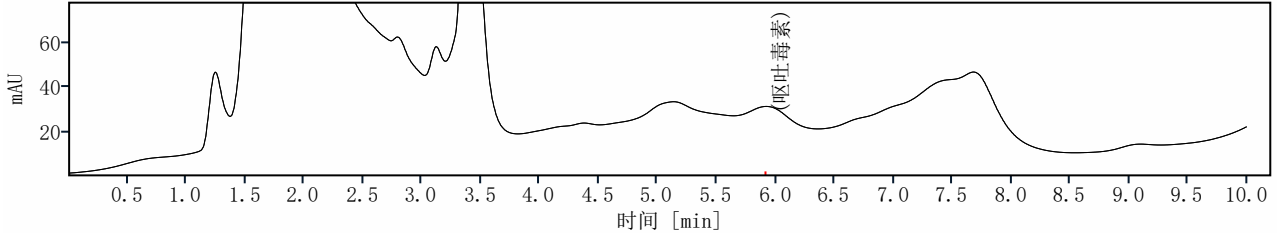
复核日期:

# 样品统计报告

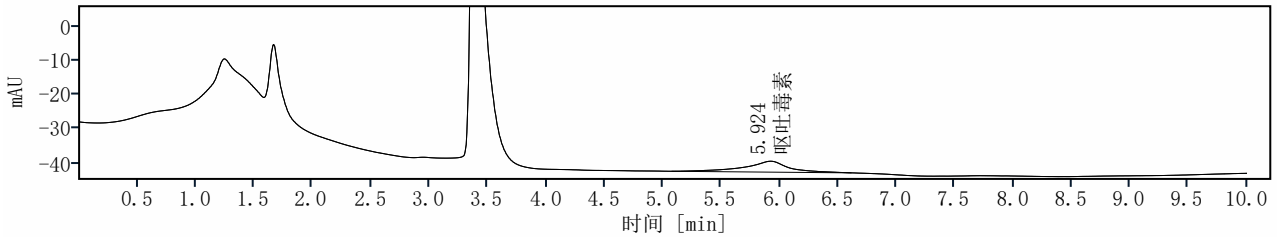
样品: WS2104896002; 信号: DAD1A, Sig=218.0, 4.0 Ref=360.0, 100.0



样品: WS2104896003; 信号: DAD1A, Sig=218.0, 4.0 Ref=360.0, 100.0



样品: STD-4-R; 信号: DAD1A, Sig=218.0, 4.0 Ref=360.0, 100.0



名称	呕吐毒素		保留时间 [min]	面积	峰高 [pA]	采集日期	含量 [μg/mL]
样品名称	样品瓶号						
SJKB	31		5.924	0.000	0.000	09/01/2021 09:35:15	0.0000
GCKB	32		5.924	0.000	0.000	09/01/2021 09:47:05	0.0000
STD-1	33		5.933	5.038	0.198	09/01/2021 09:58:49	0.0583
STD-2	34		5.933	6.038	0.299	09/01/2021 10:10:35	0.0710
STD-3	35		5.932	42.195	1.620	09/01/2021 10:22:22	0.5297
STD-4	36		5.930	79.725	3.098	09/01/2021 10:34:14	1.0059
STD-5	37		5.934	157.363	6.228	09/01/2021 10:45:57	1.9909
STD-6	38		5.924	491.203	14.487	09/01/2021 10:57:42	6.2265
WS2104896001	-TDs 39		5.924	0.000	0.000	09/01/2021 11:21:14	0.0000
WS2104896002	-T. koningii FTDs 40		5.924	0.000	0.000	09/01/2021 11:33:02	0.0000
WS2104896003	-A.niger FTDs 41		5.924	0.000	0.000	09/01/2021 11:44:48	0.0000
STD-4-R	36		5.924	83.286	3.187	09/01/2021 12:31:48	1.0510

检验员:

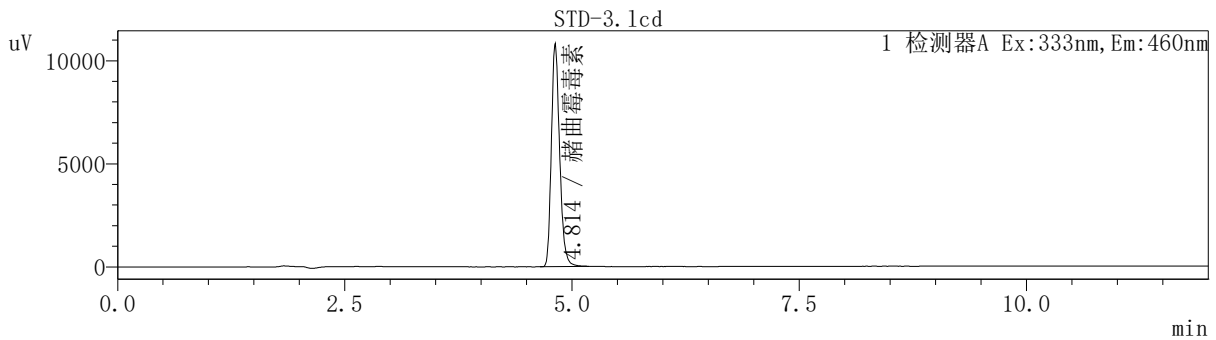
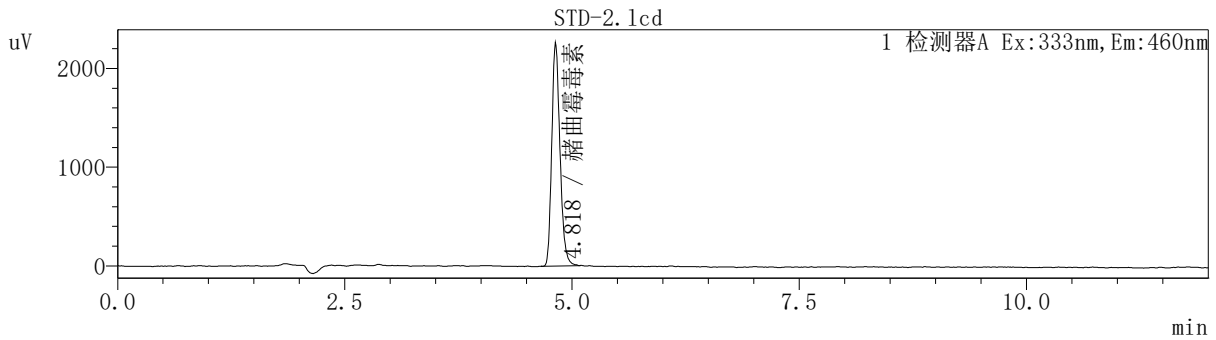
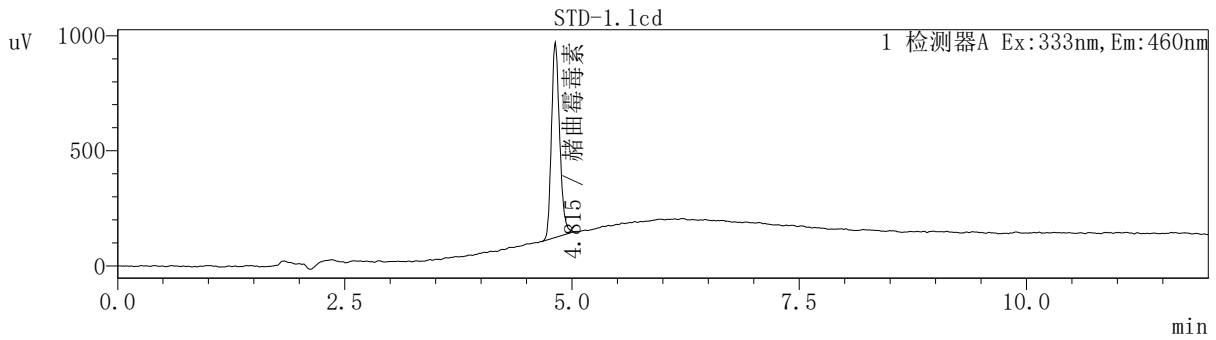
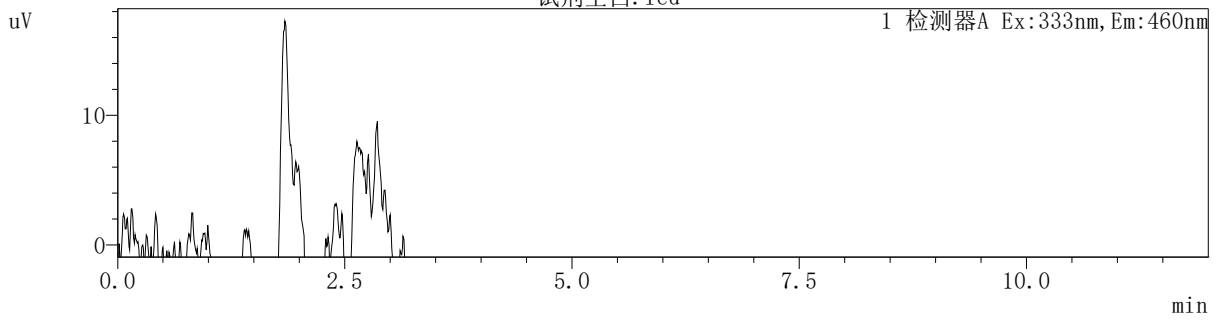
复核人:

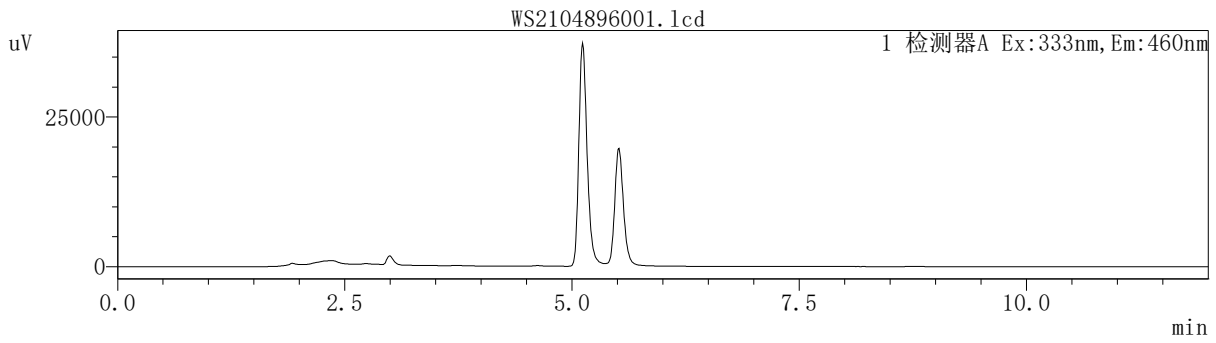
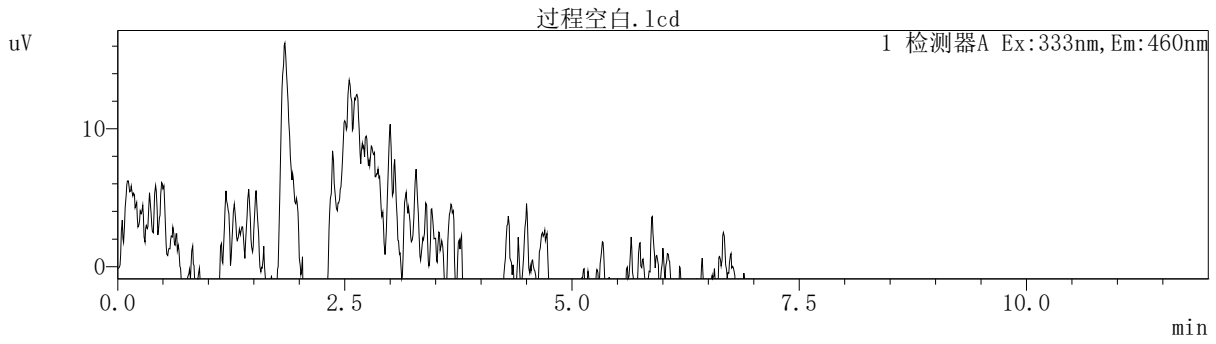
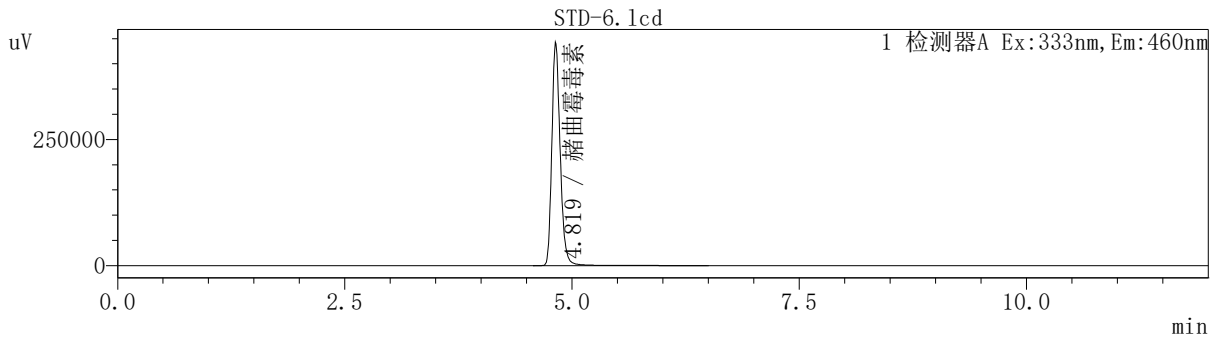
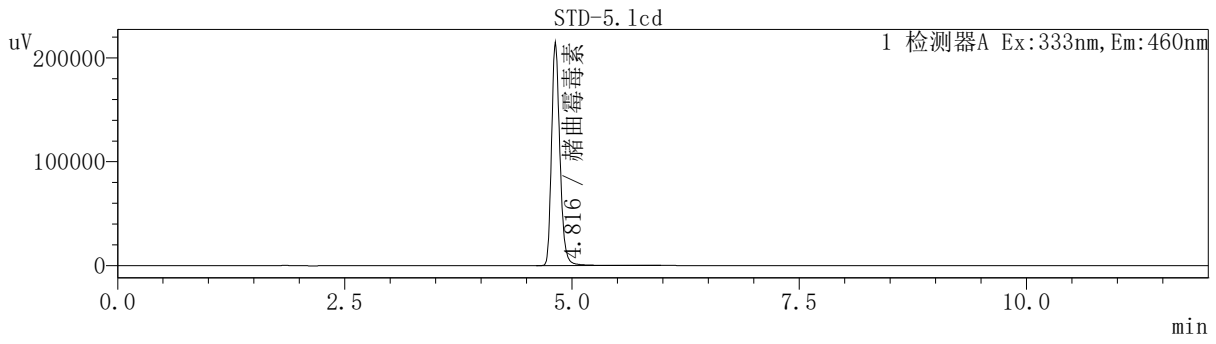
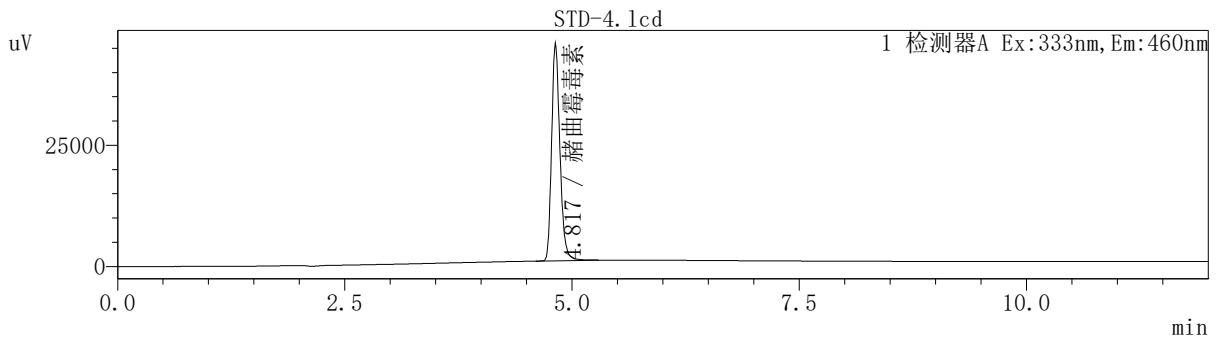
复核日期:

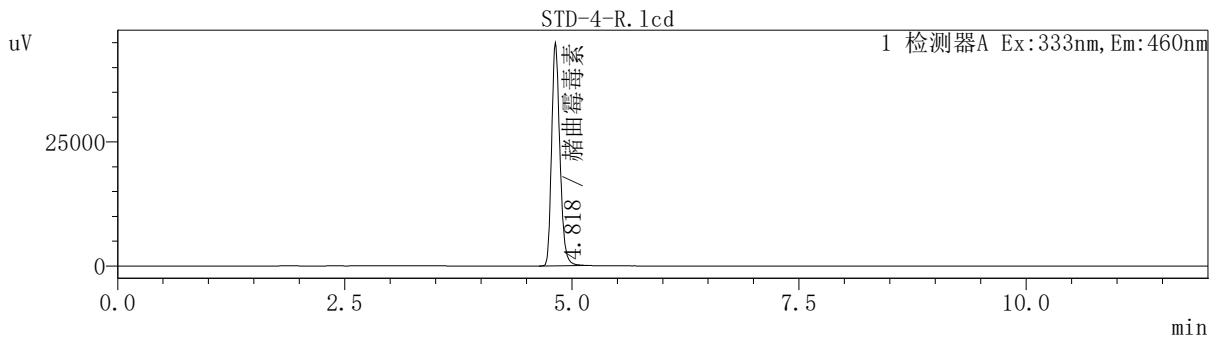
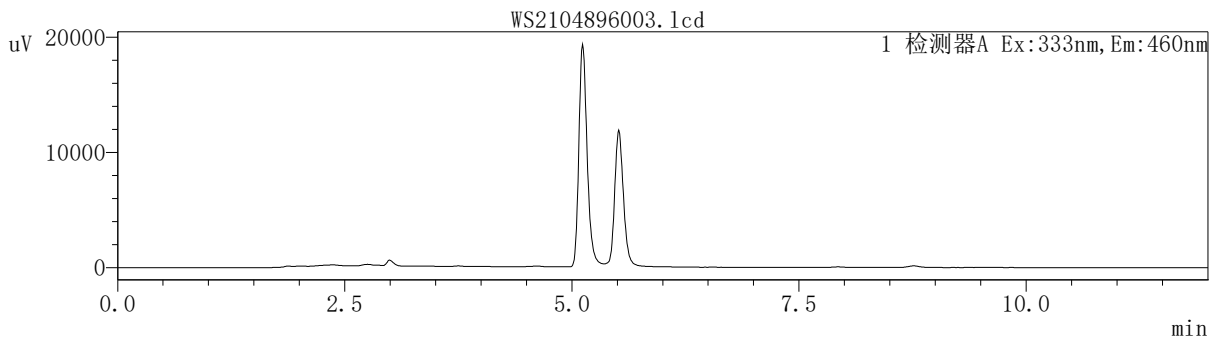
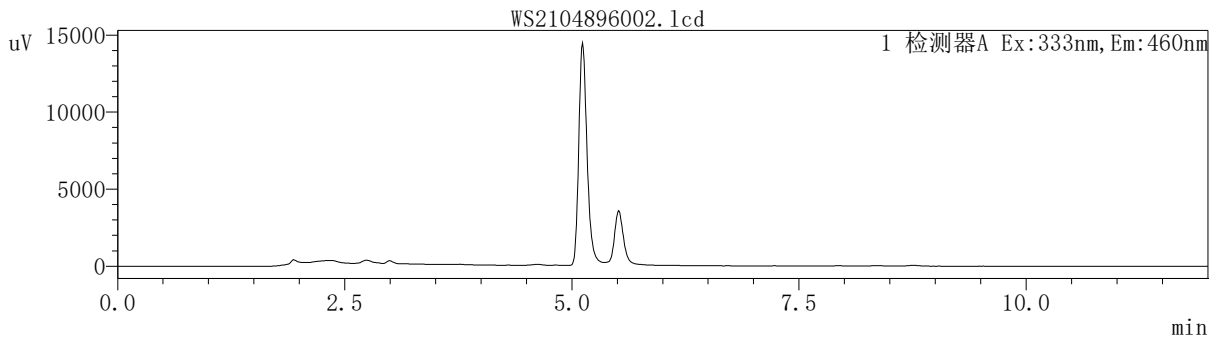
# Ochratoxin

分析者 : System Administrator  
设备编号 : GZ20210203  
样品架号 : 1  
样品瓶号 : 1  
进样体积 : 20 uL  
数据文件名 : 试剂空白.lcd  
方法文件名 : 20210902.lcm  
批处理文件名 : 20210902-1.lcb  
分析日期 : 2021/9/2 12:44:33

汇总(每个化合物)  
试剂空白.lcd





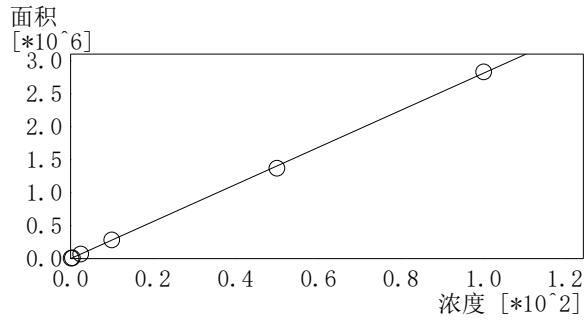


<< 检测器A >>  
ID#1 化合物名: 赭曲霉毒素

标题	保留时间	面积	浓度	浓度单位	样品瓶号	分析日期	分析时间
试剂空白.lcd	0.000	0	0.0000	ng/ml	1	2021/9/2	12:44:33
STD-1.lcd	4.815	5310	0.1887	ng/ml	3	2021/9/2	12:57:07
STD-2.lcd	4.818	14228	0.5056	ng/ml	4	2021/9/2	13:09:40
STD-3.lcd	4.814	68494	2.4342	ng/ml	5	2021/9/2	13:22:13
STD-4.lcd	4.817	284548	10.1127	ng/ml	6	2021/9/2	13:34:47
STD-5.lcd	4.816	1372043	48.7619	ng/ml	7	2021/9/2	13:47:20
STD-6.lcd	4.819	2830906	100.6094	ng/ml	8	2021/9/2	13:59:54
过程空白.lcd	0.000	0	0.0000	ng/ml	2	2021/9/2	14:12:28
WS2104896001.lcd -TDS	0.000	0	0.0000	ng/ml	12	2021/9/2	15:02:44
WS2104896002.lcd -T.koningii	0.000	0	0.0000	ng/ml	13	2021/9/2	15:15:18
WS2104896003.lcd -A.niger	0.000	0	0.0000	ng/ml	14	2021/9/2	15:27:53
STD-4-R.lcd -FTDS	4.818	283508	10.0758	ng/ml	6	2021/9/2	15:40:27

校准曲线

ID号 : 1  
 化合物名 : 赭曲霉毒素  
 定量算法 : 外标法  
 校准曲线公式 :  $f(x)=28137.6*x+0$   
 相关系数(R)=0.9998883 拟合度(R<sup>2</sup>)=0.9997765 剩余值的平方和(RSS)=1.521233e+009  
 平均 RF 2.776827e+004 RF标准偏差 7.694208e+002 RF相对标准偏差RSD 2.770863  
 校准曲线类型 : 直线  
 原点 : 通过  
 加权方法 : 无  
 检测器名 : 检测器A



#	浓度(比率)	平均面积
1	0.2	5310
2	0.5	14228
3	2.5	68494
4	10	284548
5	50	1372043
6	100	2830906