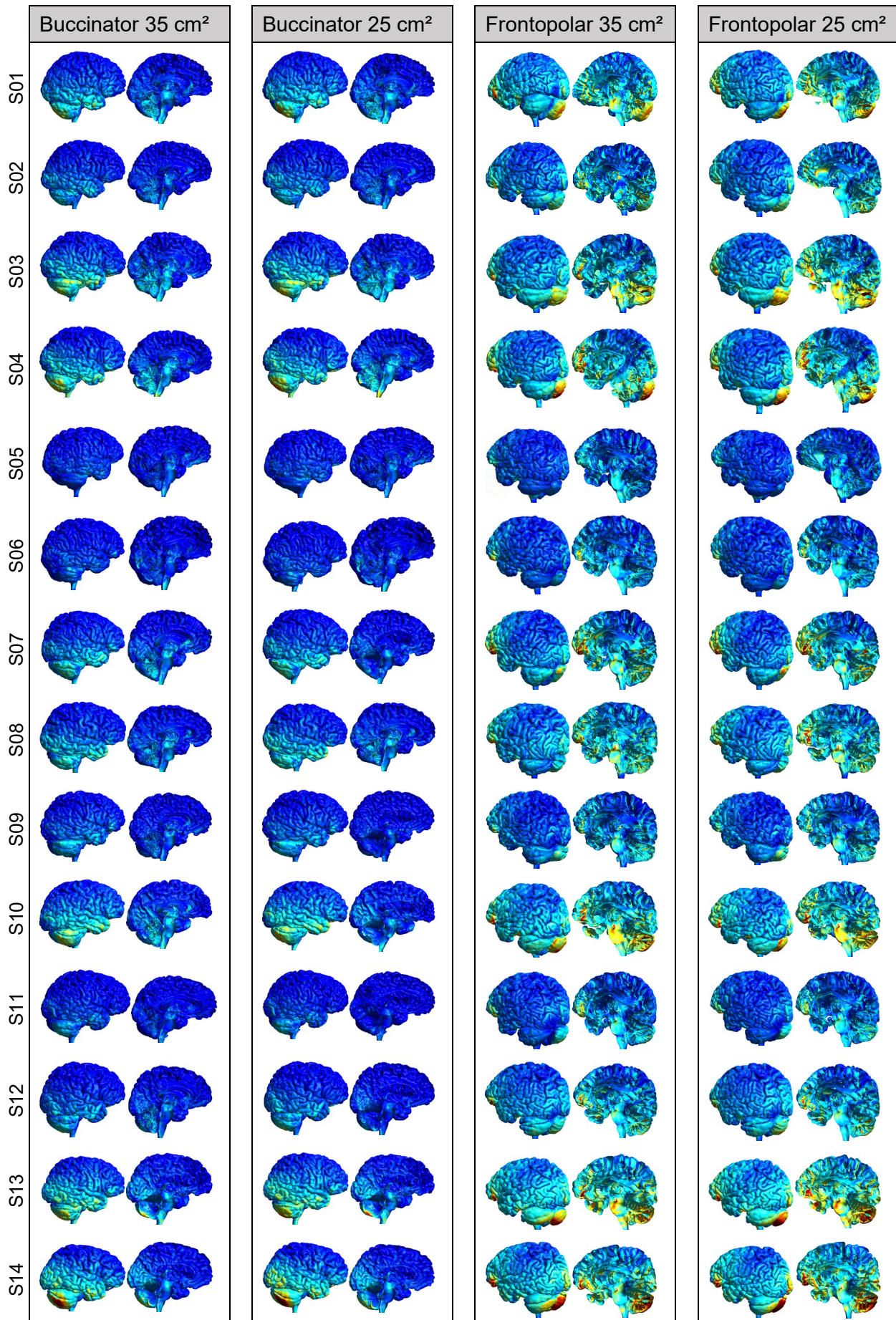


Figure S 1. Electric field distributions for the four conventional montages tested in Experiment 1.



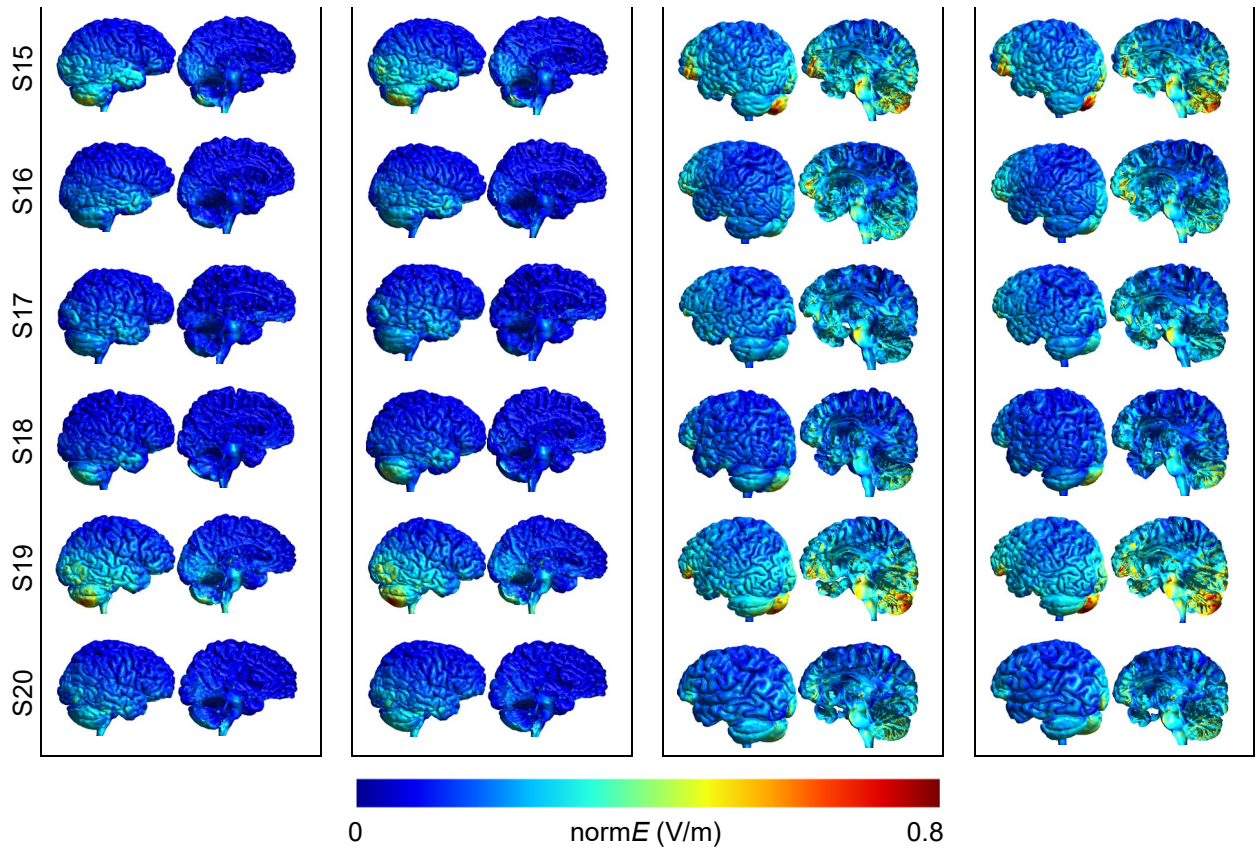
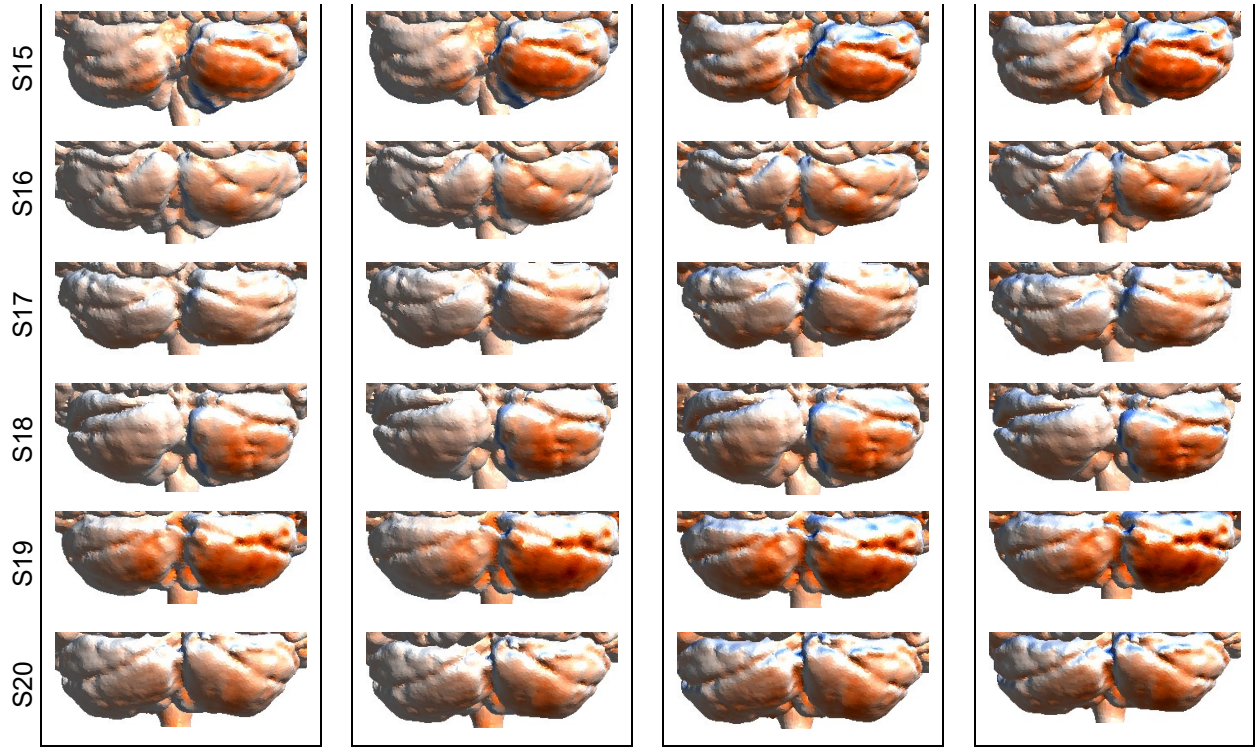


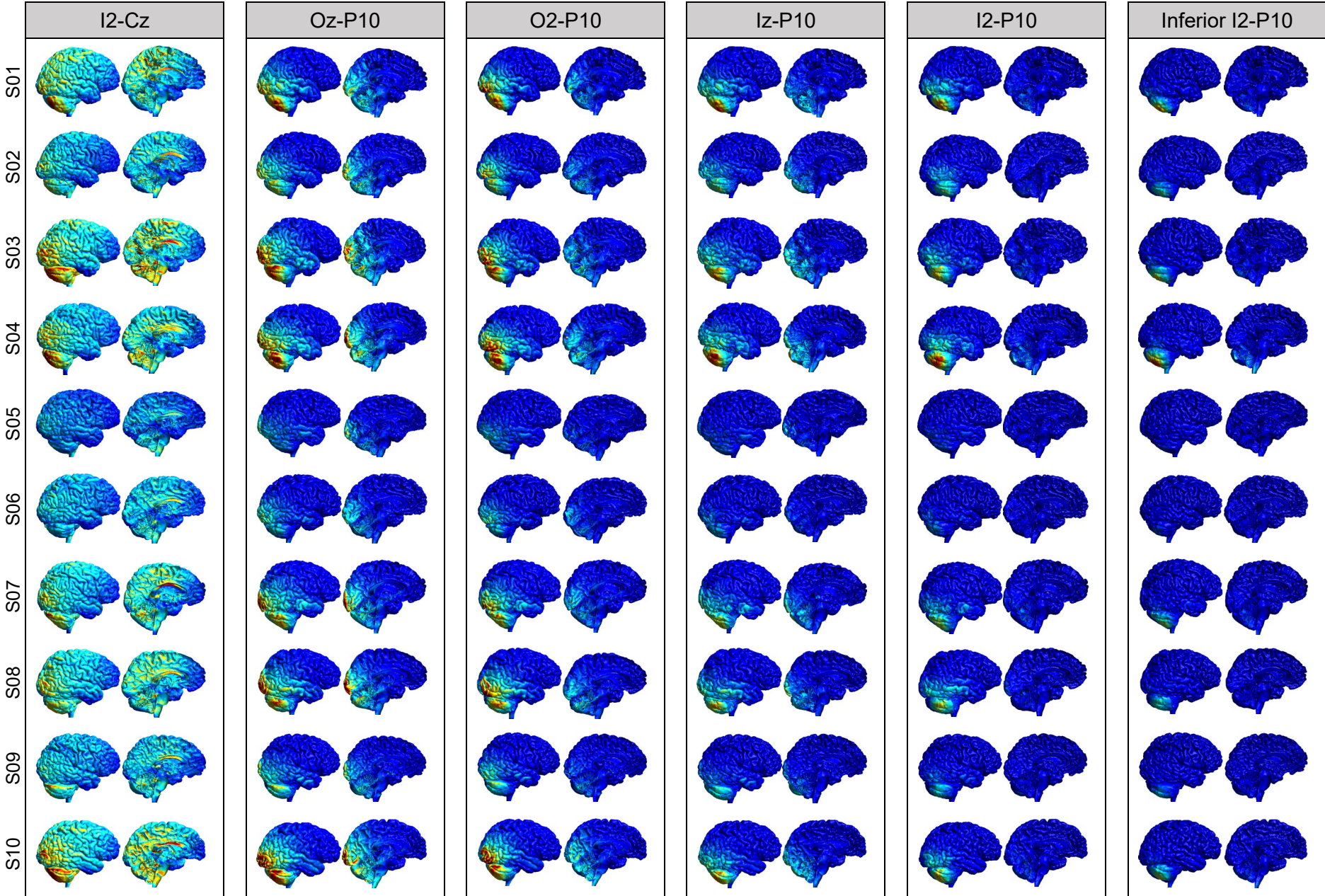
Figure S 2. Electric field directions for the four conventional montages tested in Experiment 1.





-0.4 normal E (V/m) 0.4

Figure S 3. Electric field distributions for the six alternative montages tested in Experiment 2.



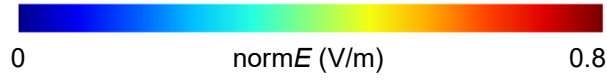
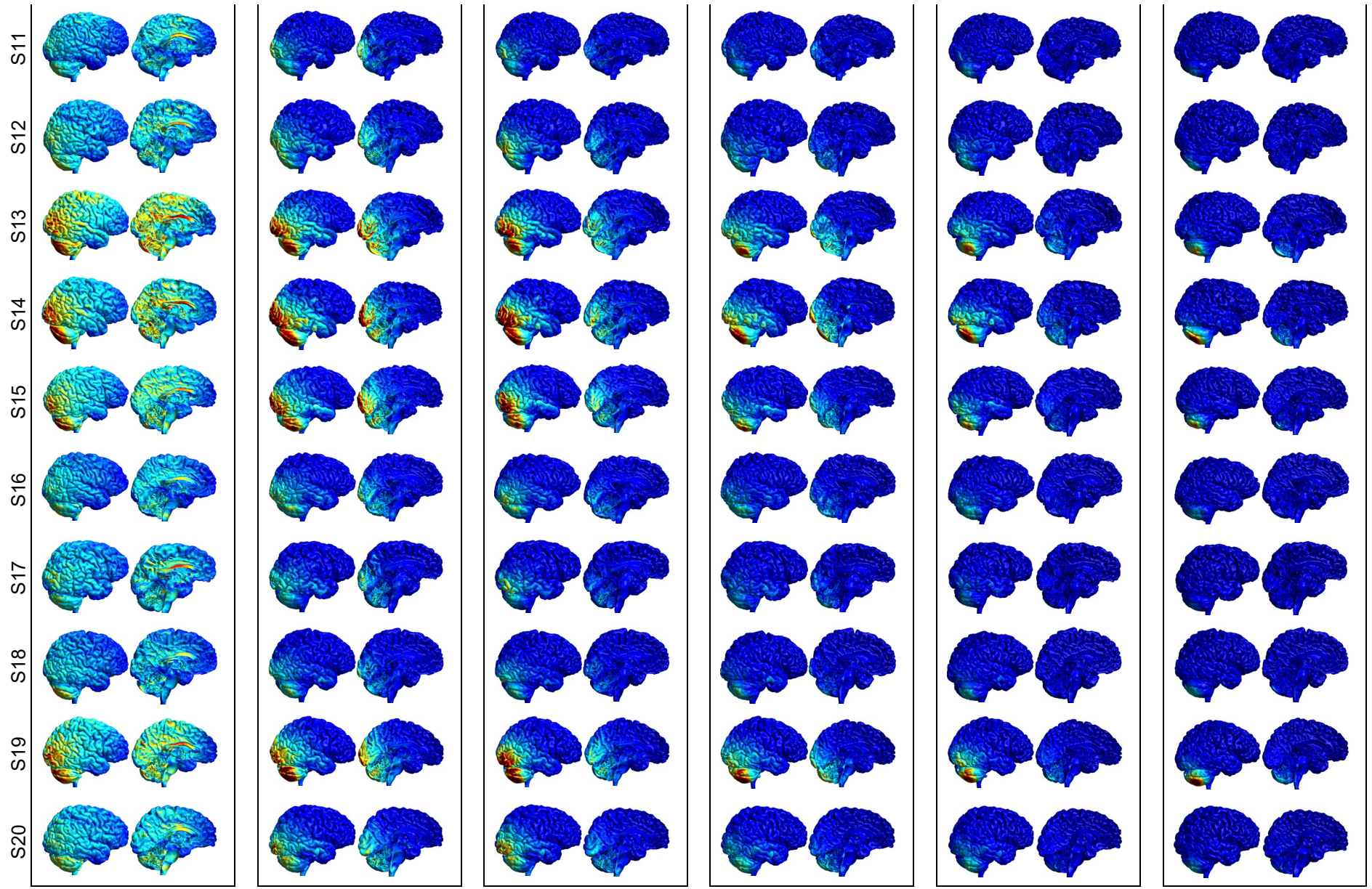
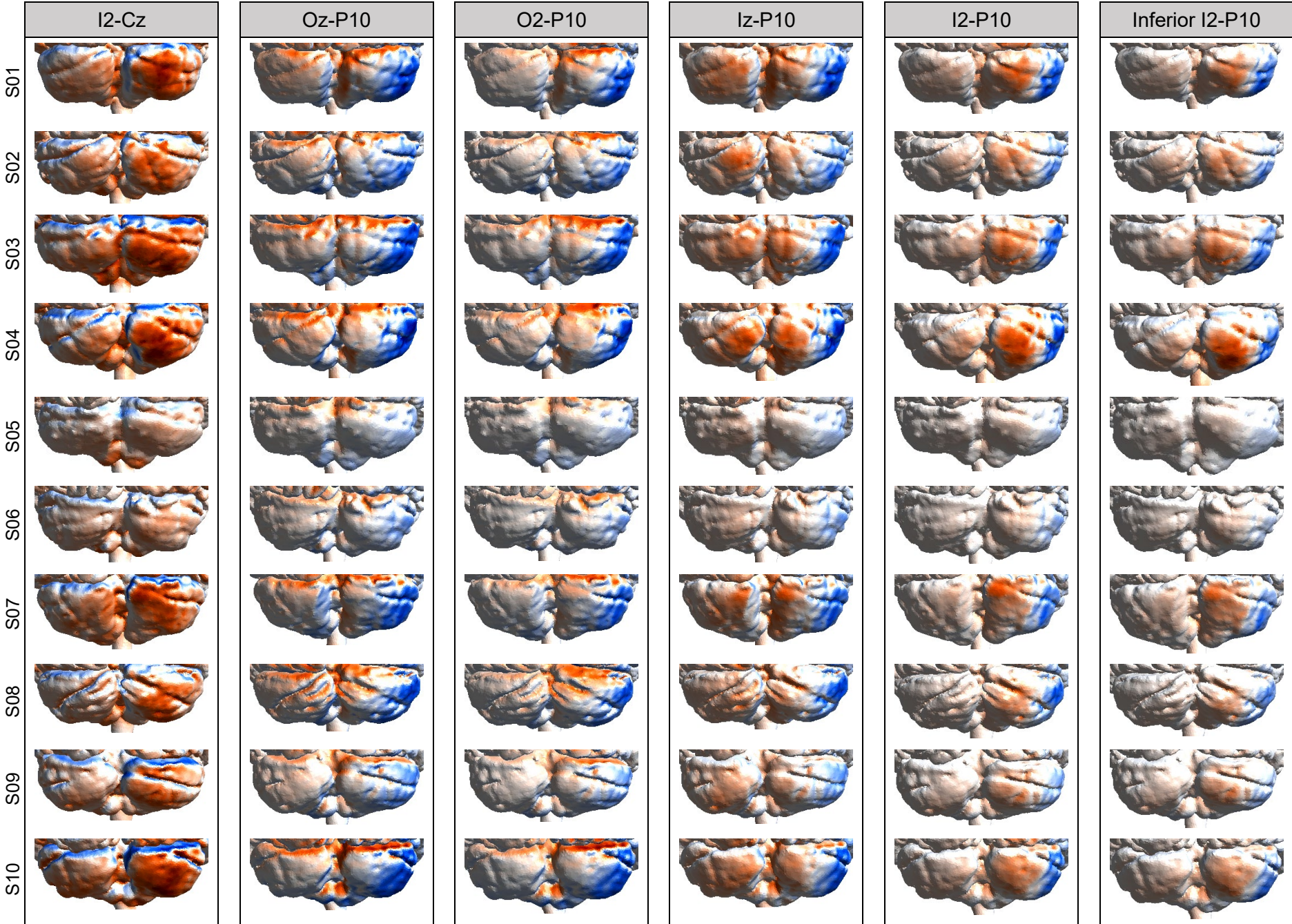


Figure S 4. Electric field directions for the six alternative montages tested in Experiment 2.



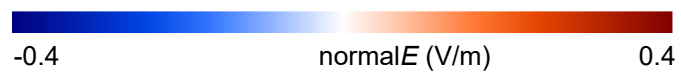
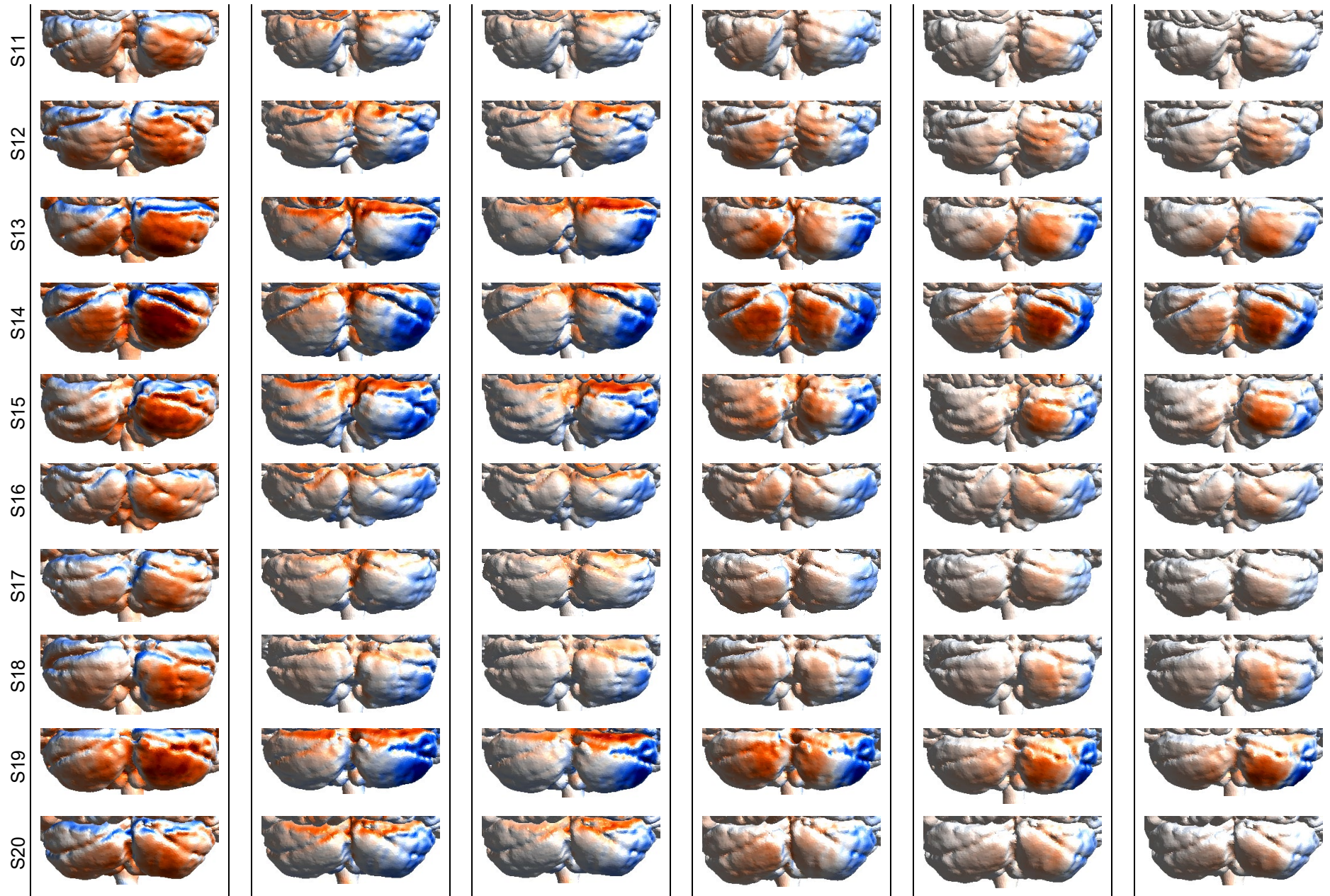


Figure S5. Field focality corresponding to the area of the grey matter with field strengths equal to or higher than 50% of the 99.9th percentile for all tested montages.

