

Supplementary Figures

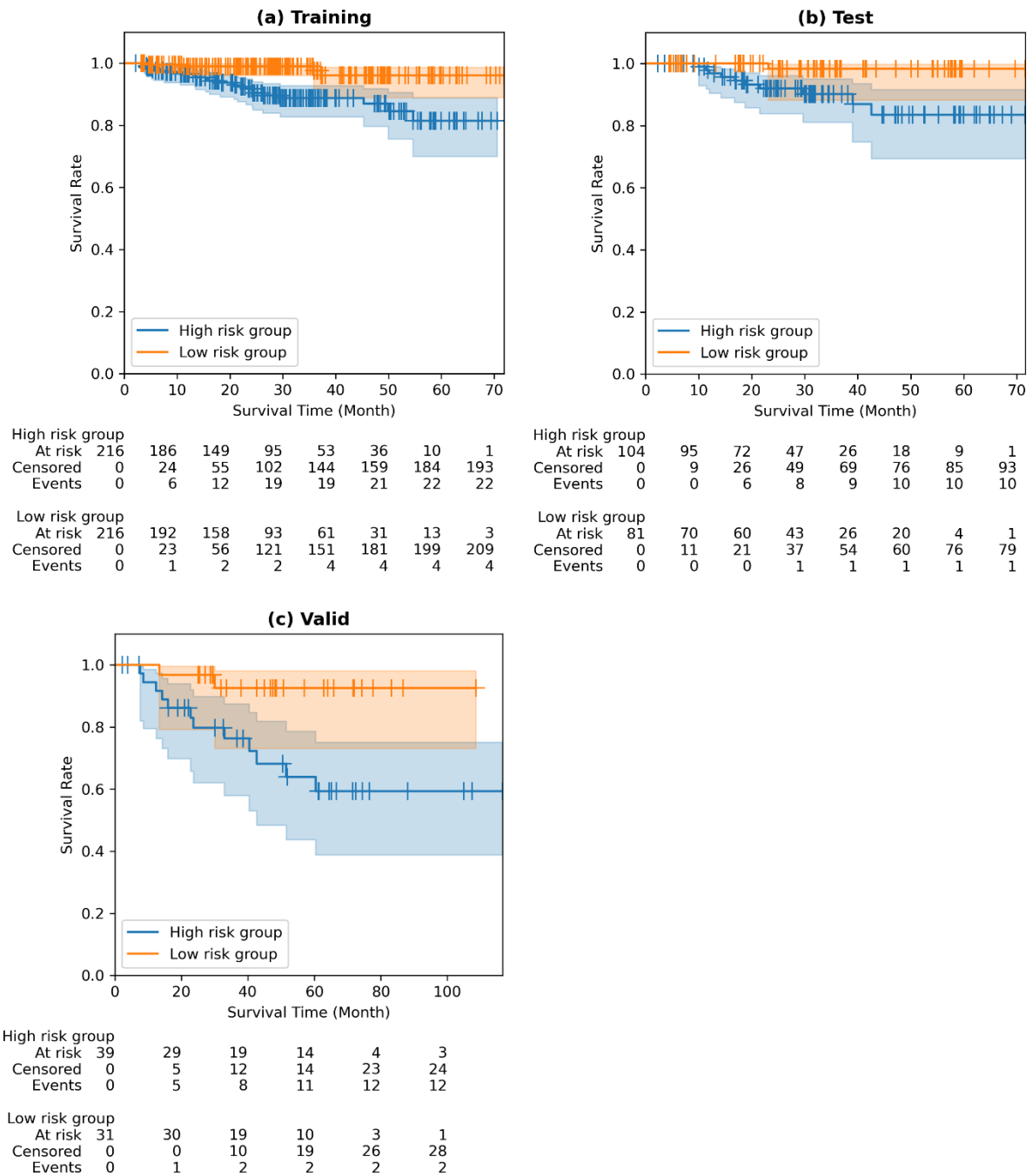


Figure S1. Kaplan–Meier plots of radiomics-guided DL model using Dense network. (a) Kaplan–Meier plot of training cohort, hazard ratio of 4.4383 (95% CI of 2.0468–9.6241), p-value of 0.0003, and C-index of 0.7410, (b) Kaplan–Meier plot of test cohort, hazard ratio of 5.3620 (95% CI of 1.7011–18.5774), p-value of 0.0116, and C-index of 0.0.7214, (c) Kaplan–Meier plot of validation cohort, hazard ratio of 4.2277 (95% CI of 1.4800–12.0768), p-value of 0.0153, and C-index of 0.7112.

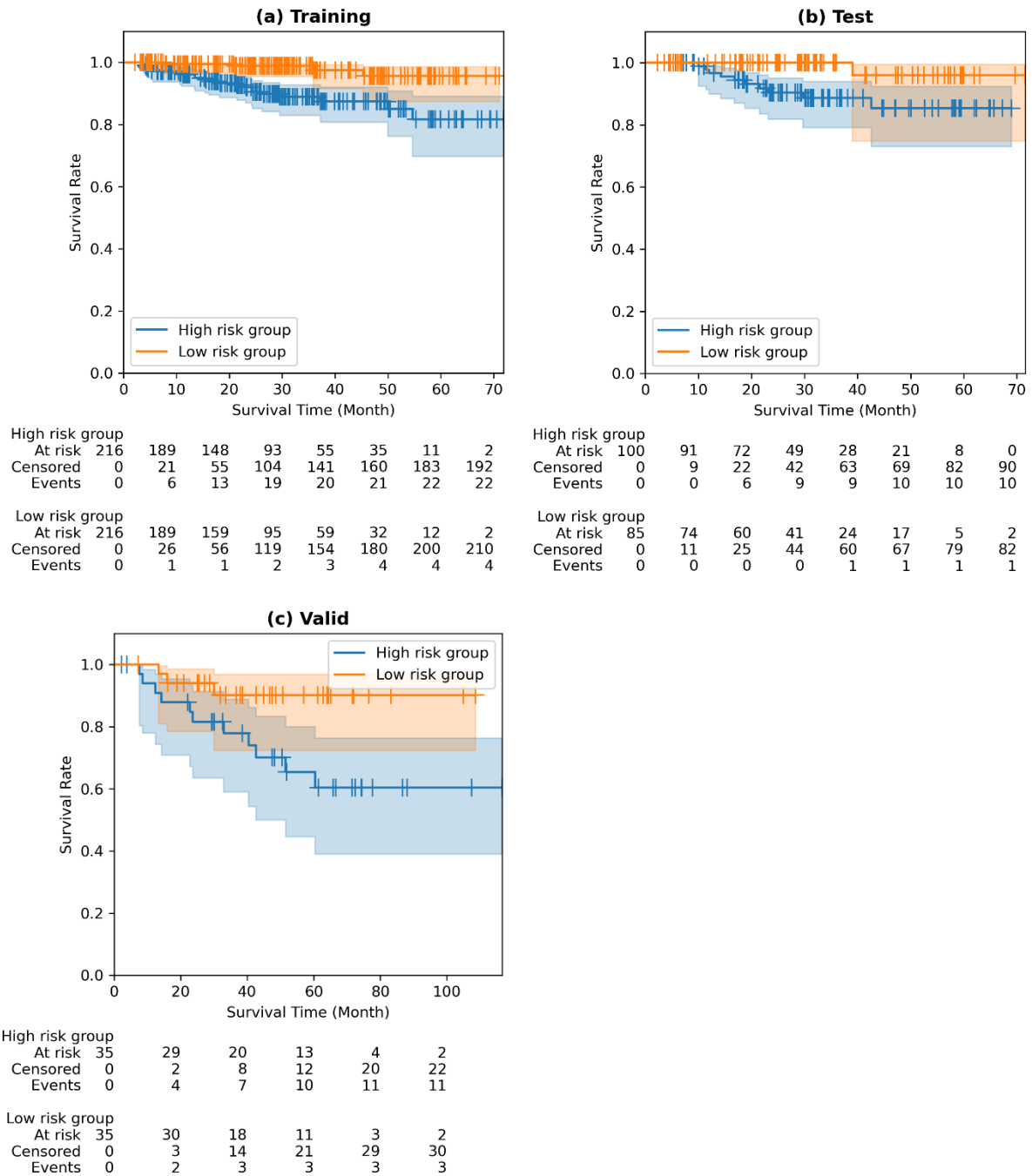


Figure S2. Kaplan–Meier plots of radiomics-guided DL model using VGG network. (a) Kaplan–Meier plot of training cohort, hazard ratio of 4.2454 (95% CI of 1.9658–9.1683), p-value of 0.0005, and C-index of 0.7660, (b) Kaplan–Meier plot of test cohort, hazard ratio of 4.7060 (95% CI of 1.4333–15.4520), p-value of 0.0244, and C-index of 0.0.8009, (c) Kaplan–Meier plot of validation cohort, hazard ratio of 3.5488 (95% CI of 1.2409–10.1494), p-value of 0.0362, and C-index of 0.6757.

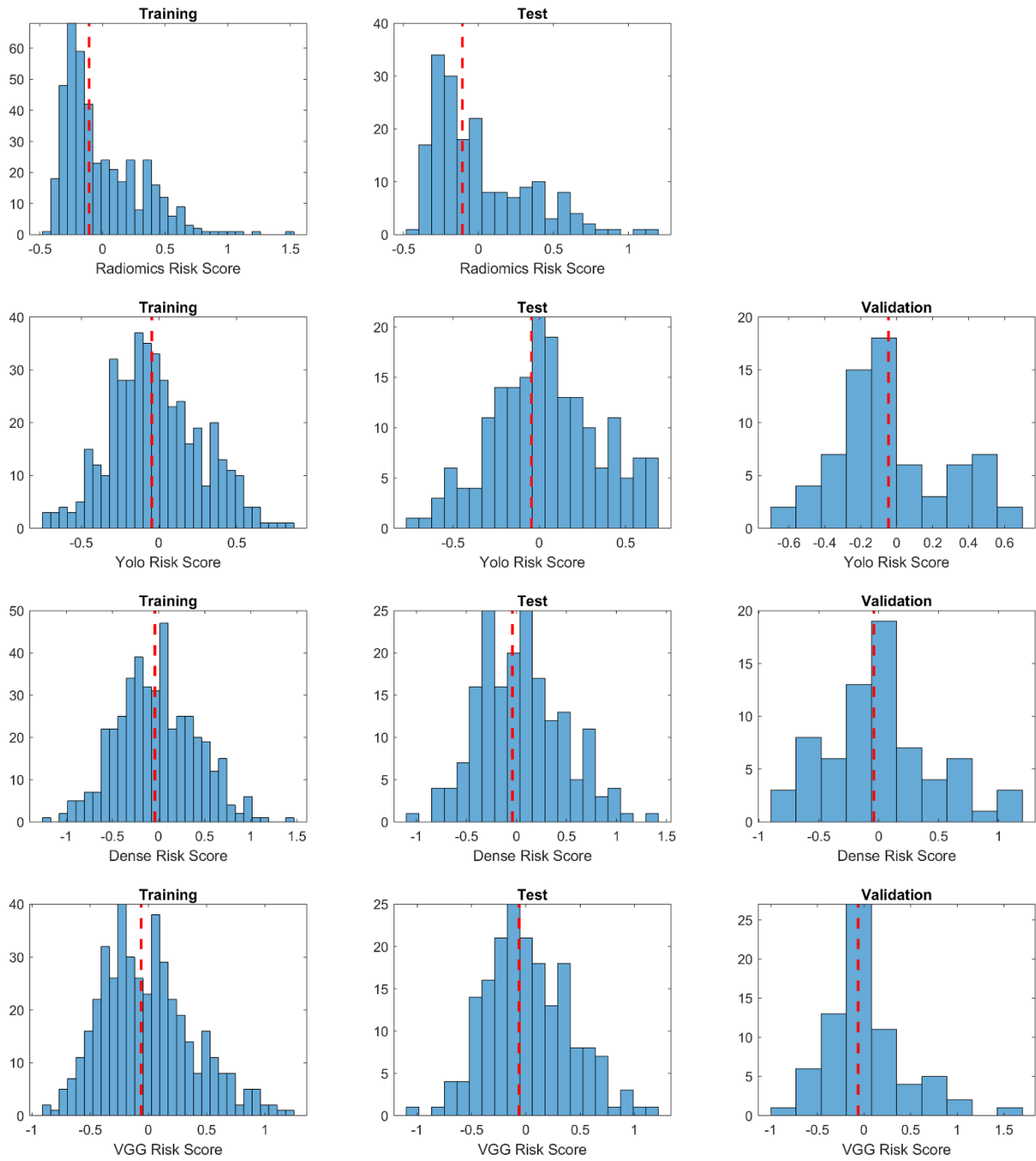


Figure S3. Plot of RRS and DRS for various approaches. The red dotted line is the median cut-off.

Supplementary Tables

Table S1. DL risk score model using Dense network for prognosis and the associated DL features.

Feature	Cox-LASSO coefficient
Dense_Latent_5092	0.0752
Dense_Latent_23965	0.1629
Dense_Latent_34596	-0.1983
Dense_Latent_34597	-0.0995
Dense_Latent_49309	0.1584

Table S2. DL risk score model using VGG network for prognosis and the associated DL features.

Feature	Cox-LASSO coefficient
VGG_Latent_9481	-0.0763
VGG_Latent_9482	-0.2061
VGG_Latent_21151	0.1891
VGG_Latent_23055	0.0385
VGG_Latent_25064	-0.0349

Table S3. Performance of various radiomics-guided DL models using features extracted from intermediate layers. We used the 80th, 150th, and 15th layers from the last layer for the Yolo, DenseNet201, and VGG19 networks.

Training				
	Hazard ratio	95% CI	p-value	C-index
Yolo	4.4436	2.0300 - 9.7268	0.0004	0.7271
DenseNet	2.8972	1.3376 - 6.2754	0.0124	0.7250
VGG	3.8206	1.7645 - 8.2726	0.0014	0.7226
Test				
	Hazard ratio	95% CI	p-value	C-index
Yolo	2.1897	0.6585 - 7.2817	0.3311	0.6492
DenseNet	2.6842	0.8815 - 8.8788	0.1893	0.6798
VGG	3.3727	1.0250 - 11.0974	0.0897	0.7236
Validation				
	Hazard ratio	95% CI	p-value	C-index
Yolo	1.6041	0.5500 - 4.6780	0.5537	0.5192
DenseNet	2.7760	0.9703 - 7.9416	0.1019	0.7269
VGG	2.1097	0.7367 - 6.0418	0.2617	0.6294