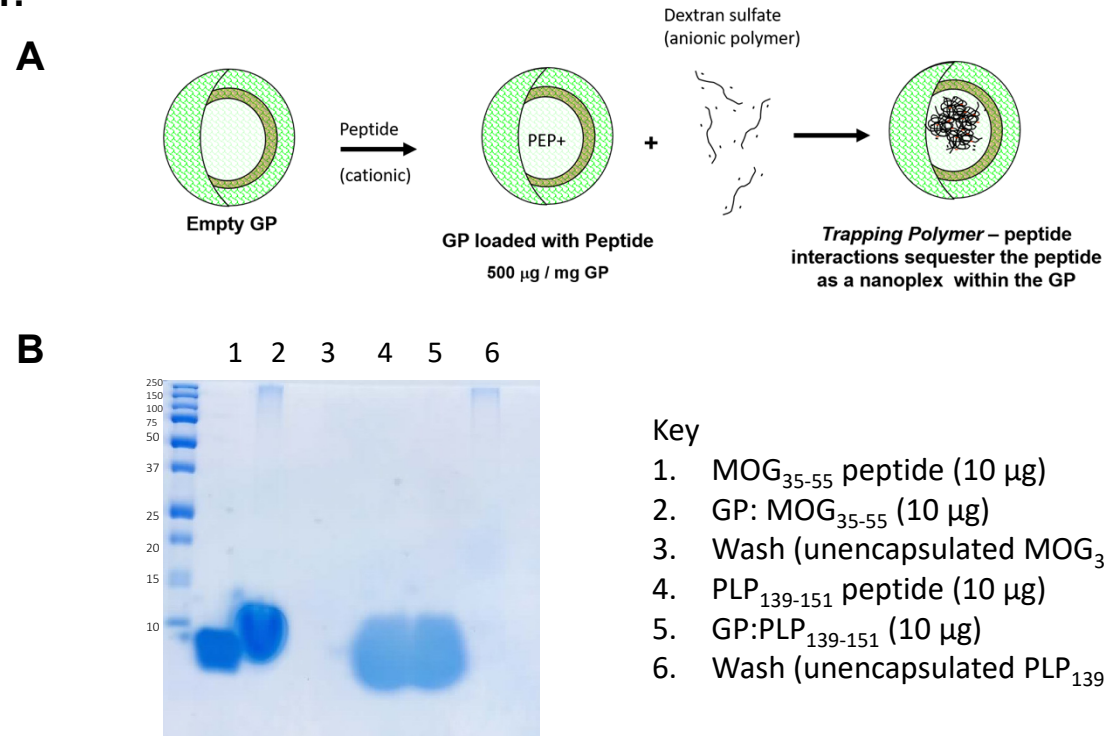
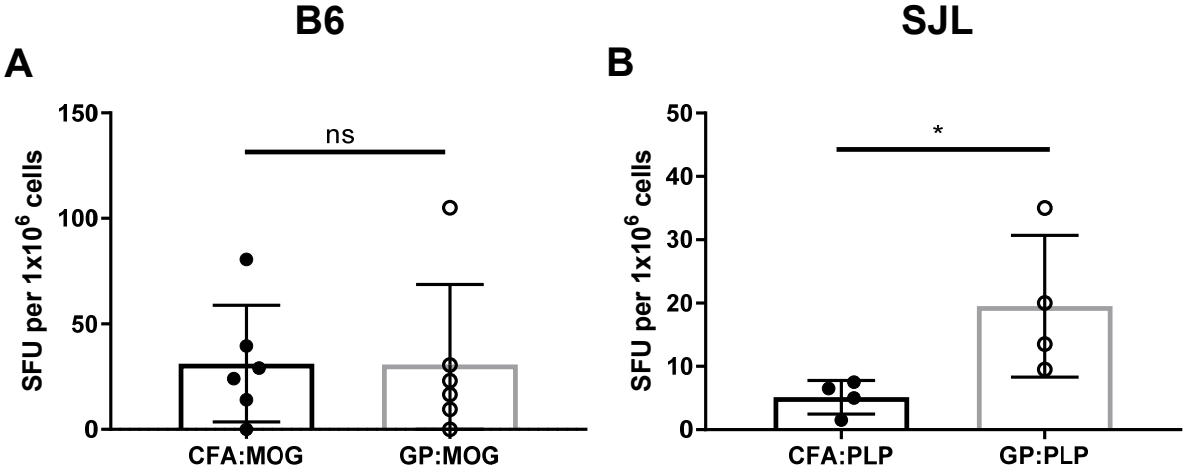


Supplementary Figure S1.



Supplementary Figure S1. Synthesis of EAE-inducing GP:Peptide cores by polymer trapping and vaccine peptide quantification. (A) Schematic of loading empty GPs with myelin peptide and sequestration of peptide in the GP with dextran sulfate as a trapping polymer. (B) SDS-Page of purified MOG₃₅₋₅₅ and PLP₁₃₉₋₁₅₁ used to make GPs. Lanes 1 and 4 contain 10 µg of indicated peptide. Lanes 2 and 5 contain 10 µg of indicated GP:Peptide fraction of the peptide loading reaction. Lanes 3 and 6 contain the wash fraction of the GP loading reaction indicating the absence of any detectable unloaded peptide. Peptide masses (in kilodaltons) are indicated.

Supplementary Figure S2.



Supplementary Figure S2. *GP:MOG35-55 and CFA:MOG35-55 immunization induces minimal Th2 responses in EAE.* Antigen-specific production of IL-5 was detected by cytokine ELISPOT assay in (A) C57BL/6 immunized with MOG35-55 or (B) SJL mice immunized with PLP139-151 on day 24 post induction of EAE. Shown is mean expression level \pm SD, unpaired *t* test performed, *n*=4-6 per group.