

Figure S1. Flow cytometry dot plot and the corresponding histogram of hPDLCs after serum starvation for 24 h. (A) Dot plot of FSC vs. SSC gated hPDLCs after serum starvation for 24 h. (B) Histogram analysis of hPDLCs after serum starvation for 24 h. hPDLC, human periodontal ligament cells; FSC, forward scatter; SSC, side scatter; Freq., frequency.

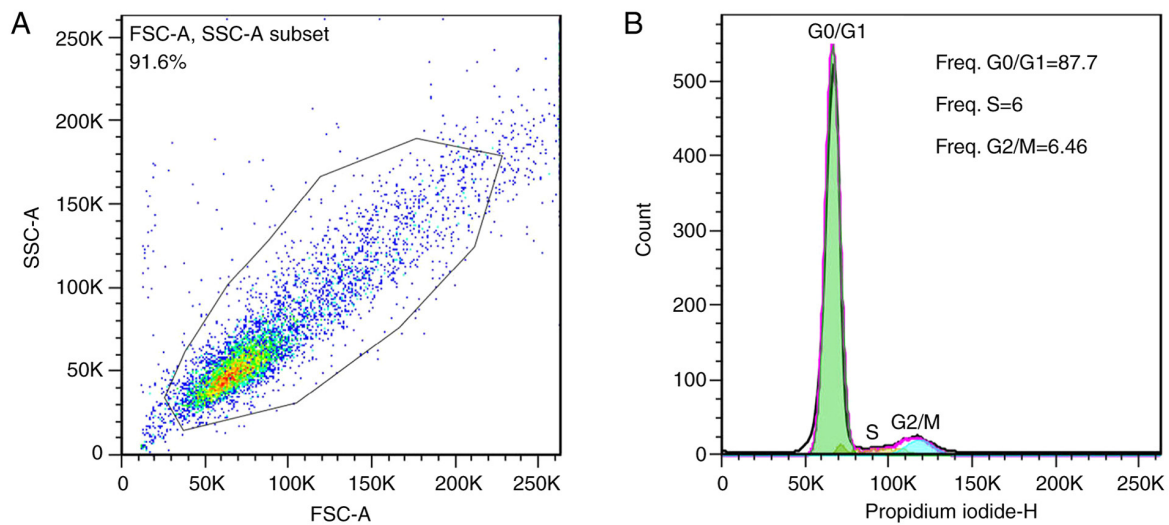


Figure S2. Effects of *Pg*-LPS on the proliferation and cell cycle of hPDLs. (a) Dot plots and (b) corresponding histograms of hPDLs cultured for 24 h as follows: (A) Without *Pg*-LPS; (B) with 0.0001  $\mu\text{g/ml}$  *Pg*-LPS; (C) with 0.001  $\mu\text{g/ml}$  *Pg*-LPS; (D) with 0.01  $\mu\text{g/ml}$  *Pg*-LPS; (E) with 0.1  $\mu\text{g/ml}$  *Pg*-LPS; (F) with 1  $\mu\text{g/ml}$  *Pg*-LPS; and (G) with 10  $\mu\text{g/ml}$  *Pg*-LPS. Proportion of cells in  $G_0/G_1$  are represented in histograms by a green peak on the left and cells in  $G_2/M$  are represented by a blue peak on the right; cells in S-phase are represented by the middle yellow area. hPDLs, human periodontal ligament cells; *Pg*, *Porphyromonas gingivalis*; LPS, lipopolysaccharide; FSC, forward scatter; SSC, side scatter.

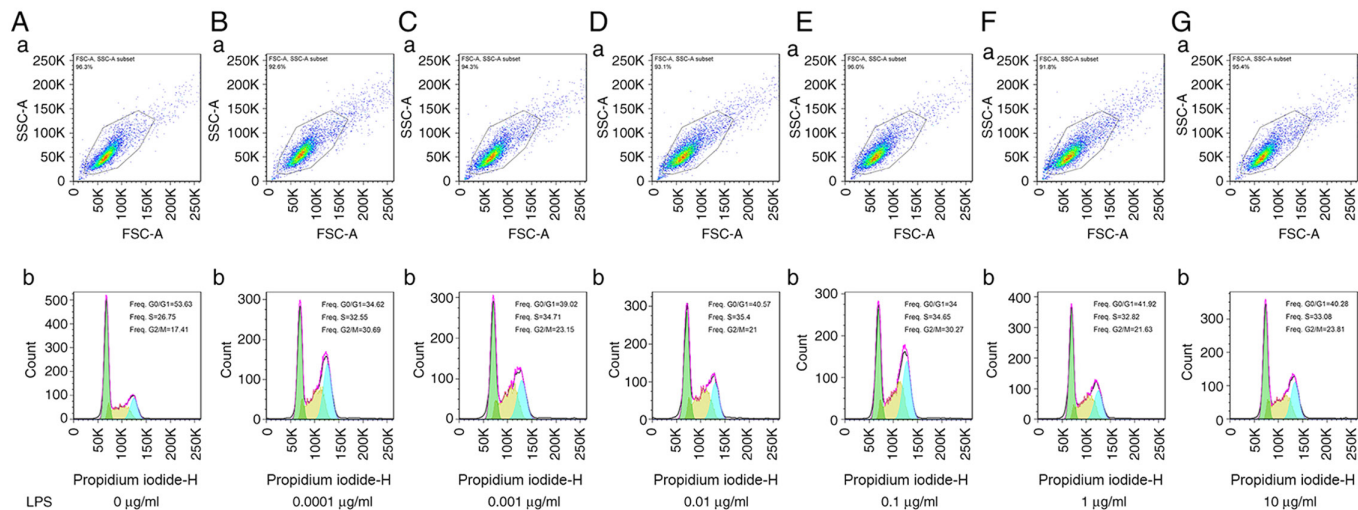


Figure S3. Dot plots and the corresponding histograms of hPDLCs cultured without or with *Pg*-LPS at 0.01  $\mu\text{g}/\text{ml}$  for 24 h. (A) Dot plot and histogram of hPDLCs cultured with *Pg*-LPS at 0.01  $\mu\text{g}/\text{ml}$ . (B) Dot plot and histogram of hPDLCs cultured without *Pg*-LPS. hPDLCs, human periodontal ligament cells; *Pg*, *Porphyromonas gingivalis*; LPS, lipopolysaccharide; Freq., frequency; FSC, forward scatter; SSC, side scatter.

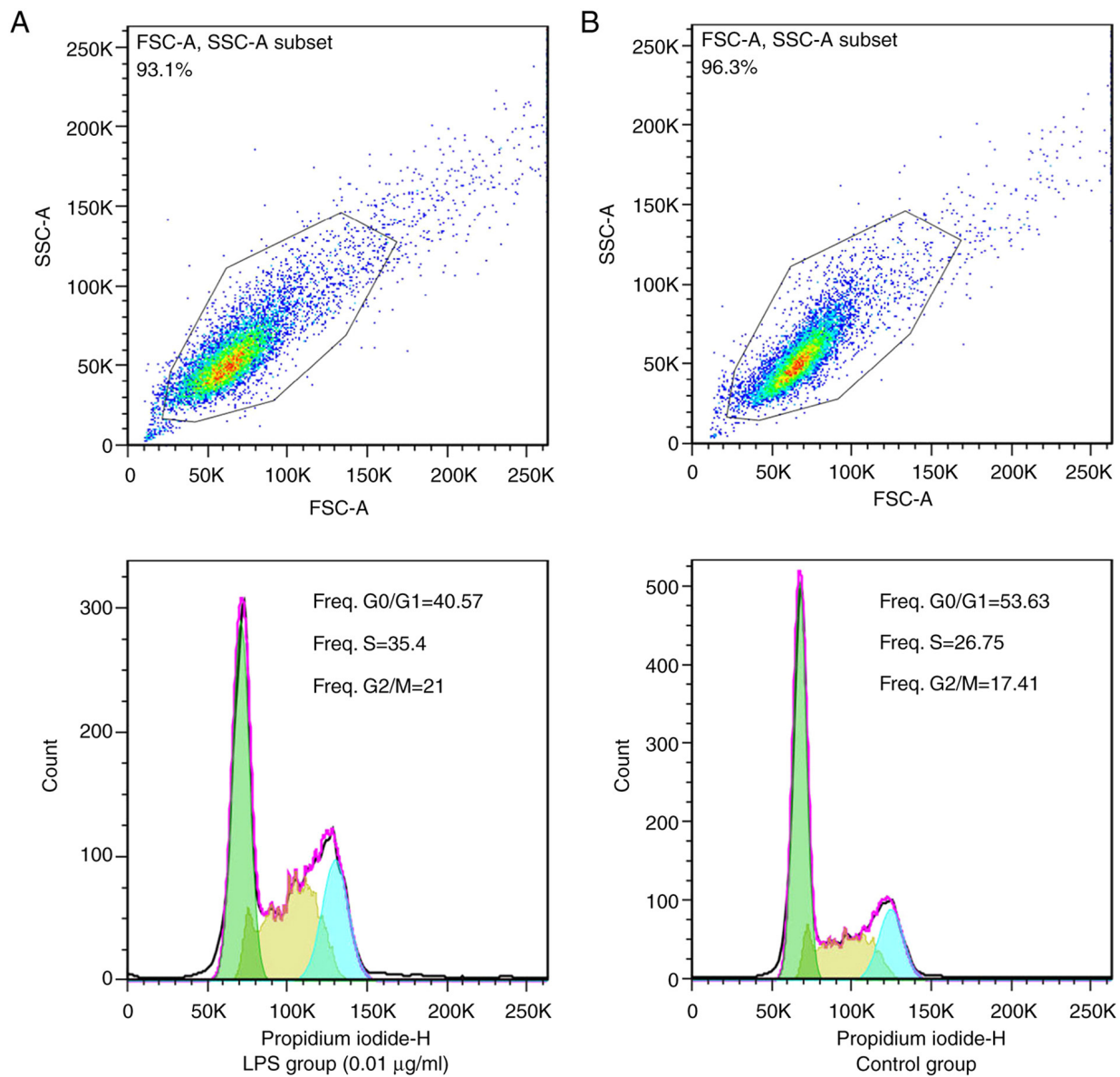


Figure S4. Dot plots and the corresponding histograms of hPDLs cultured without or with *Pg*-LPS at 0.01  $\mu\text{g/ml}$  for different durations. (a) Dot plot and (b) histogram of hPDLs cultured as follows: (A) With *Pg*-LPS for 0 h; (B) with *Pg*-LPS for 6 h; (C) with *Pg*-LPS for 12 h; (D) with *Pg*-LPS for 18 h; (E) with *Pg*-LPS for 24 h; (F) with *Pg*-LPS for 36 h; (G) with *Pg*-LPS for 48 h; (H) without *Pg*-LPS for 0 h; (I) without *Pg*-LPS for 6 h; (J) without *Pg*-LPS for 12 h; (K) without *Pg*-LPS for 18 h; (L) without *Pg*-LPS for 24 h; (M) without *Pg*-LPS for 36 h; and (N) without *Pg*-LPS for 48 h. hPDLs, human periodontal ligament cells; *Pg*, *Porphyromonas gingivalis*; LPS, lipopolysaccharide; FSC, forward scatter; SSC, side scatter.

