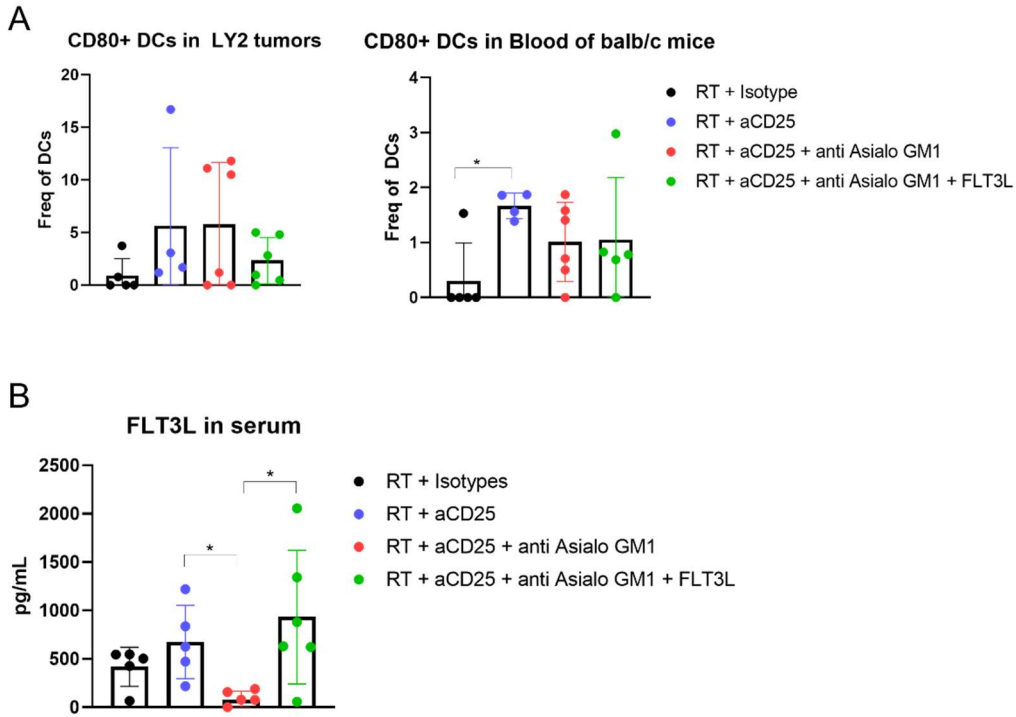


Supplementary Figure 2



Supplementary Figure 2

(A) Flow cytometry analysis of LY2 tumors analyzing DC populations; n=6. (B) Analysis of FLT3L present in the serum of LY2 bearing mice treated with radiation therapy and isotype antibodies, radiation therapy and anti-CD25 antibody, radiation therapy and anti-CD25 antibody and anti-asialoGM1 antibody to deplete NK cells, and radiation therapy, anti-CD25 antibody, anti-asialoGM1 antibody to deplete NK cells, and FLT3L therapy; n=5.