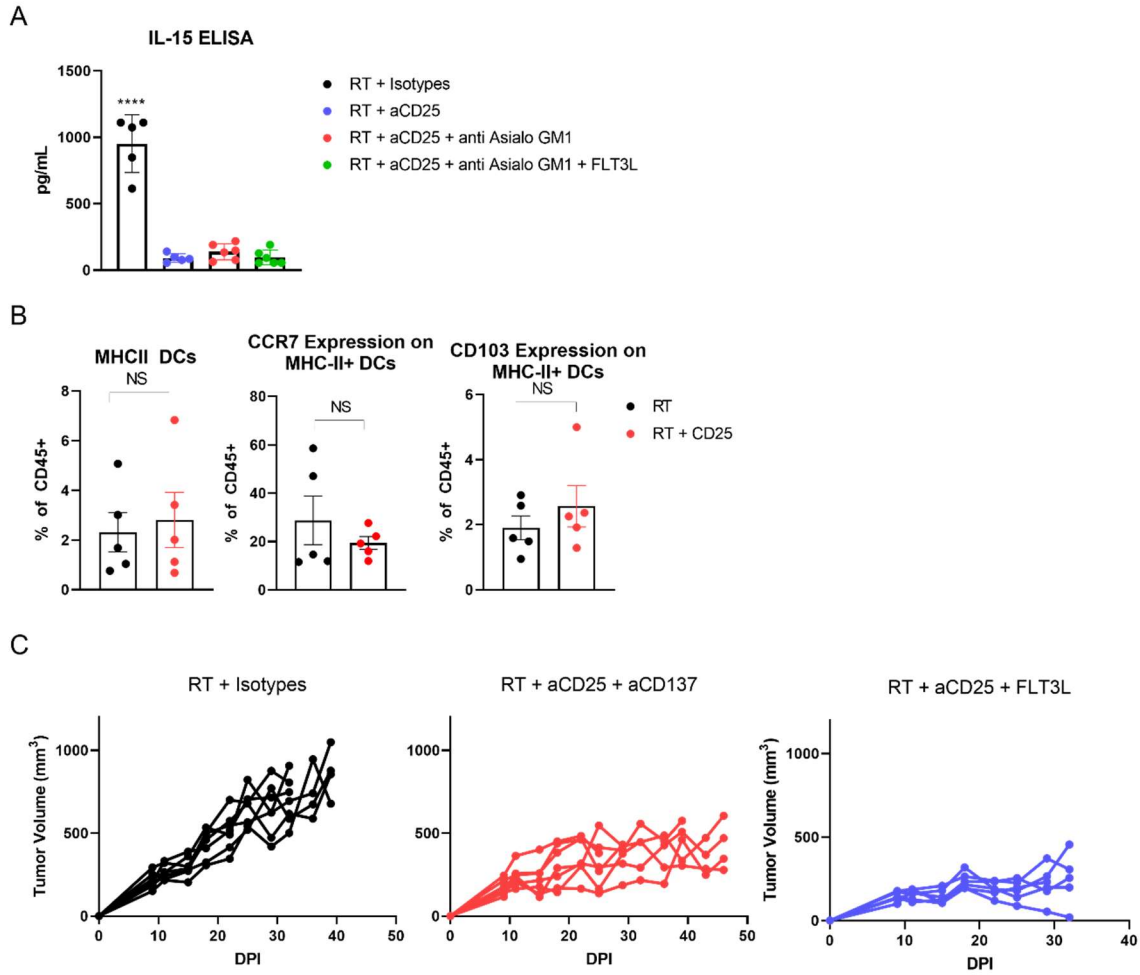


Supplementary Figure 5



(A) IL-15 amounts in serum of Balb/c mice treated with RT, anti-CD25, anti-asialoGM1 to deplete NK cells, and FLT3L; \*\*\*\*  $p \leq 0.0001$ ;  $n=6$ . (B) Flow cytometric analysis of DCs MOC2 tumors after treatment with radiation therapy and anti-CD25;  $n=5$ . (C) growth curves of MOC2 tumors in individual mice treated with radiation therapy, anti-CD25, and anti-CD137.