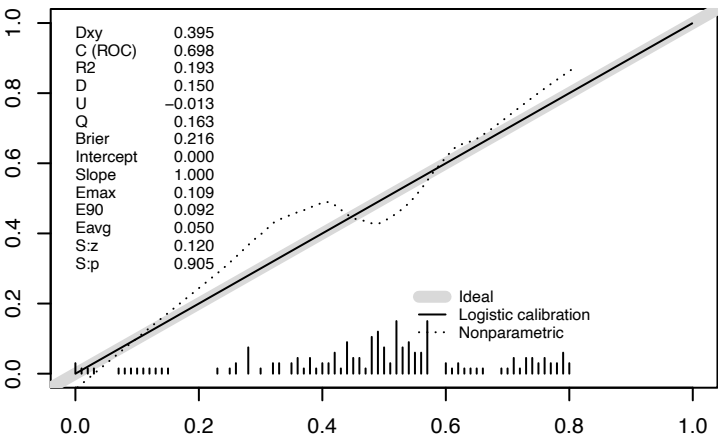
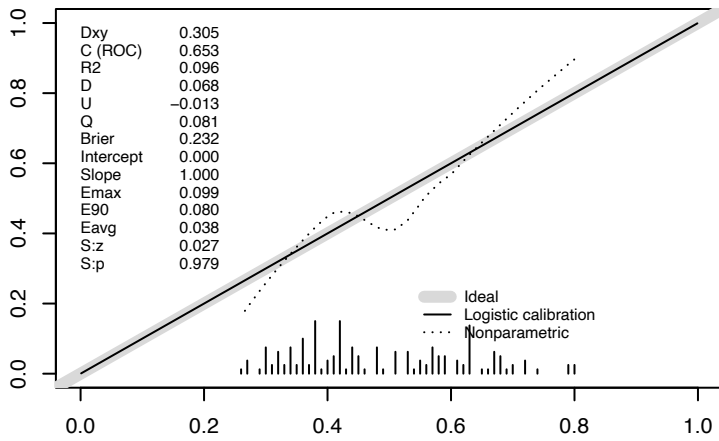


Supplemental Figure S6. Logistic regression model calibration. A, Model 1. B, Model 2. C, Model 3. D, Model 4. E, Model 5. F, Model 6. G, Model 7. A-G, Calibration curves with summary statistics. Dxy is the Somer's rank correlation between the predicted and observed values; C (ROC) is the area under the curve; R2 is the Nagelkerke-Cox-Snell-Maddala-Magee R-squared index; D is the discrimination index; U is the Unreliability index; Q is the Quality index; the Brier score is the average squared difference in the predicted and observed values; Emax is the maximum absolute difference in predicted and loess-calibrated probabilities; Eavg is the average absolute difference in predicted and loess-calibrated probabilities; E90 is the 0.9 quantile of the absolute difference in predicted and loess-calibrated probabilities; S:z and S:p are the Spiegelhalter Z-test for calibration accuracy and its two-tailed p-value.

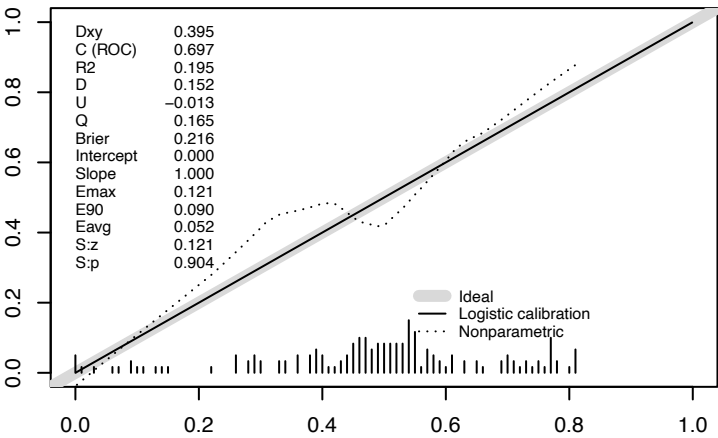
A. Model 1



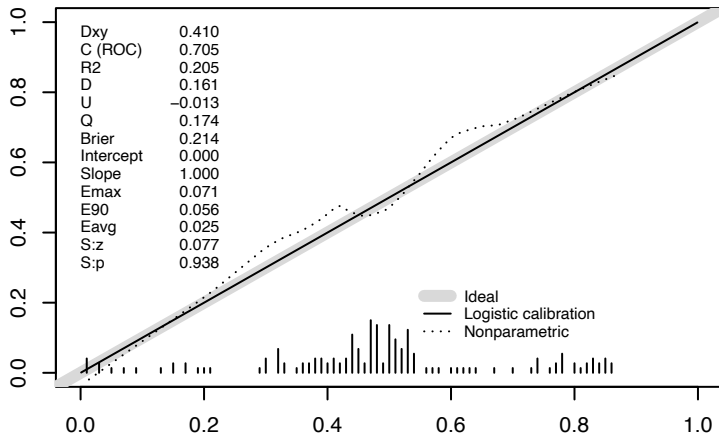
B. Model 2



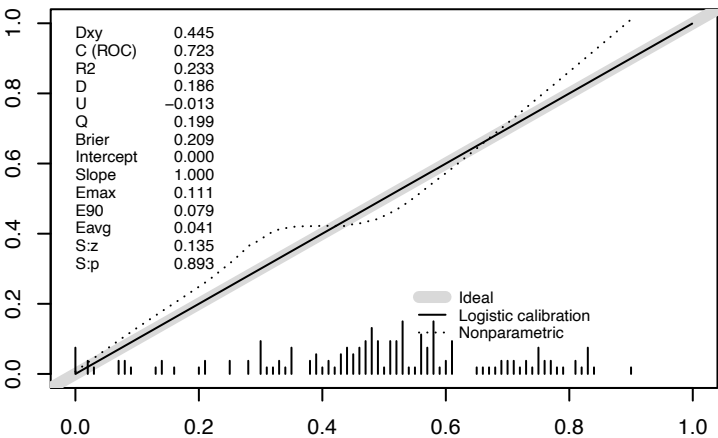
C. Model 3



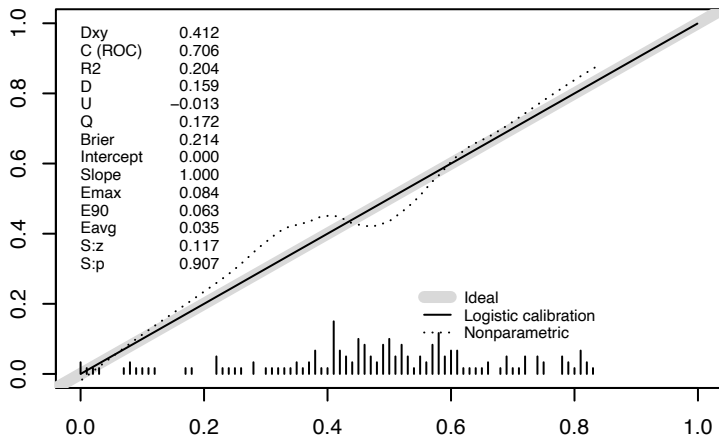
D. Model 4



E. Model 5



F. Model 6



G. Model 7

