
Supplementary information

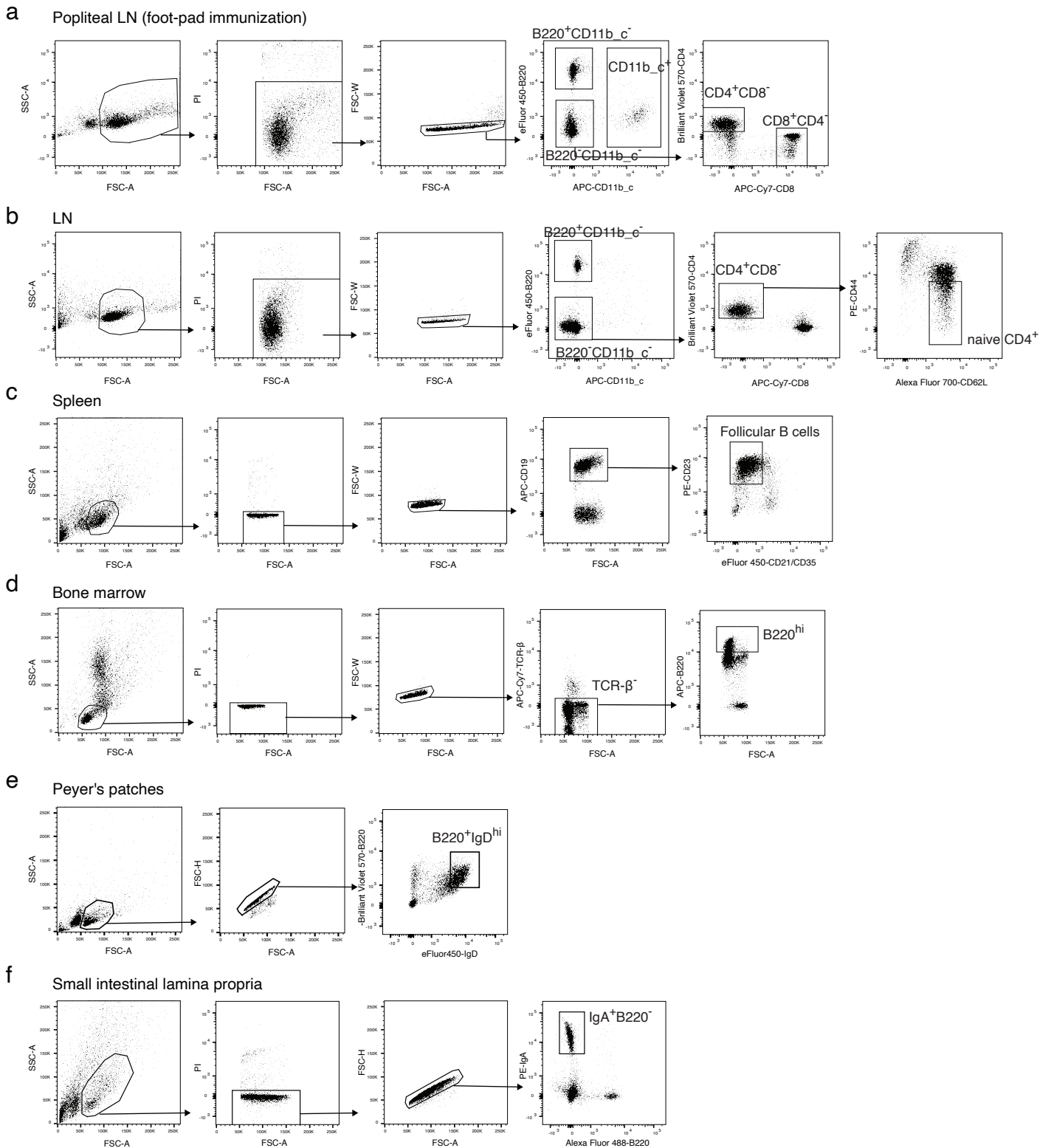
**B cell-derived GABA elicits IL-10
macrophages to limit anti-tumour immunity**

In the format provided by the
authors and unedited

Supplementary information

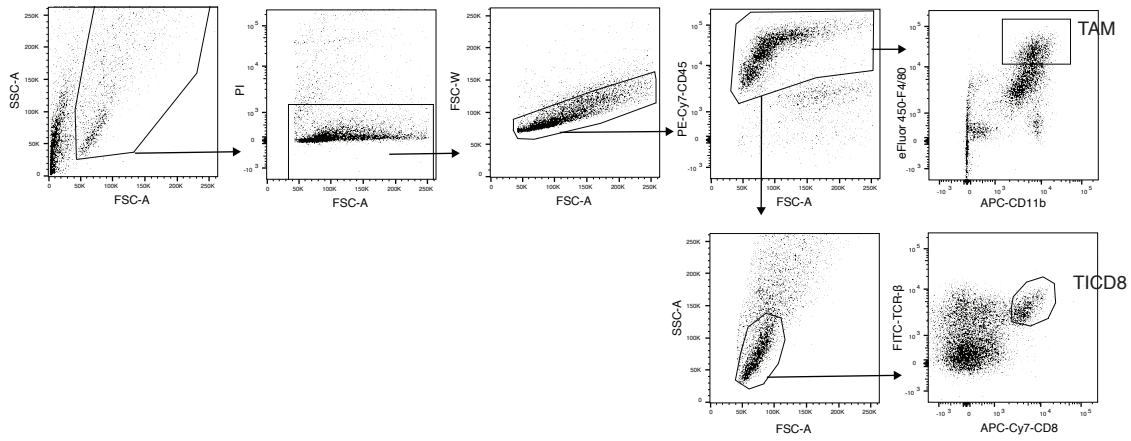
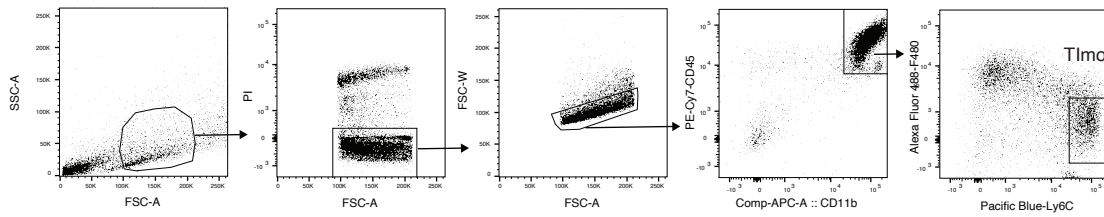
**B cell-derived GABA elicits IL-10
macrophages to limit anti-tumour immunity**

In the format provided by the
authors and unedited



Supplementary Figure 1. Sorting strategies for isolation of immune cells in the peripheral organs

a, CD4⁺ or CD8⁺ T cells (CD11c⁻; CD11b⁻; B220⁻; CD4⁺ or CD8⁺), B cells (CD11c⁻; CD11b⁻; CD4⁻; CD8⁻; B220⁺) and Mf/DC (B220⁻; CD11c⁺ and/or CD11b⁺) were sorted from popliteal LNs after footpad immunization, in Fig. 2a. **b-f**, naïve CD4⁺ T cells (CD11c⁻; CD11b⁻; B220⁻; CD8⁻; CD4⁺; CD44^{low}; CD62L⁺), B cells (CD11c⁻; CD11b⁻; CD4⁻; CD8⁻; B220⁺) cells were sorted from LNs (pooled axillary, brachial and inguinal LNs) (**b**), follicular B cells (CD19⁺; CD21^{mid}; CD23⁺) were sorted from spleen (**c**), bone marrow B cells (B220^{hi}; TCR-β⁻) (**d**), Peyer's patch B cells (B220⁺; IgD^{hi}) (**e**) were sorted as defined, and lamina propria IgA plasma cells (IgA⁺; B220⁻) (**f**) were sorted from small intestine of WT mice, in Fig. 2b.

a**b**

Supplementary Figure 2. Sorting strategies for isolation of immune cells in tumor tissues

a, Tumor-associated macrophages (TAMs) or tumor infiltrating CD8⁺ T cells (TICD8) were sorted from tumor of WT or *muMt*^{-/-} mice implanted with GABA or placebo pellets, or WT mice injected with DMSO or picrotoxin as shown in Fig. 3f, g, h, Extended Data Fig. 6d and Extended Data Fig. 10. **b**, Tumor infiltrating monocytes (Tlmo) were isolated from tumor of WT mice, in Fig. 4e.