

transfected M17D cells

α S wt α S 3K β S wt β S 3K

C M C M C M C M

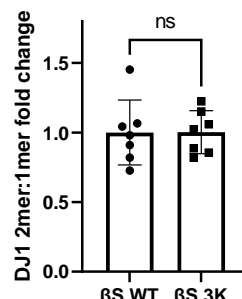
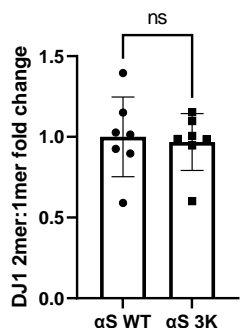
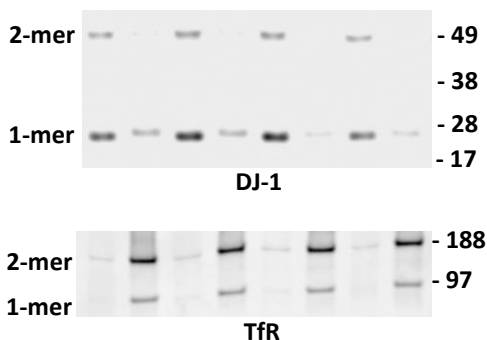
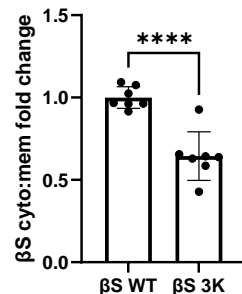
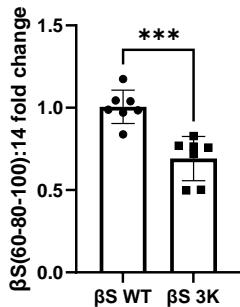
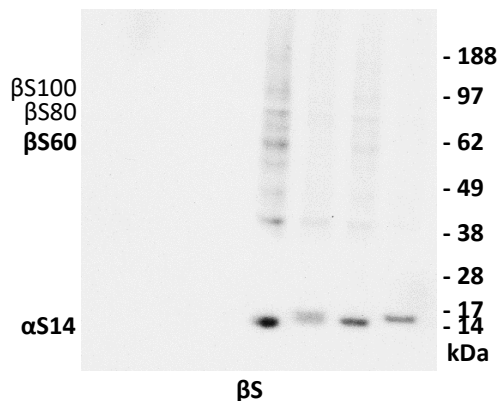
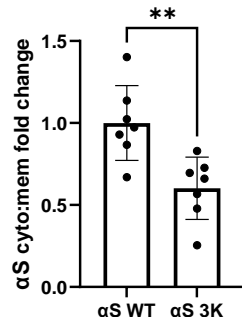
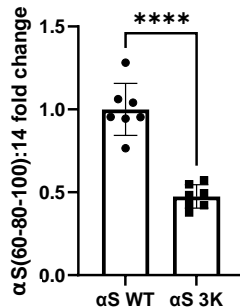
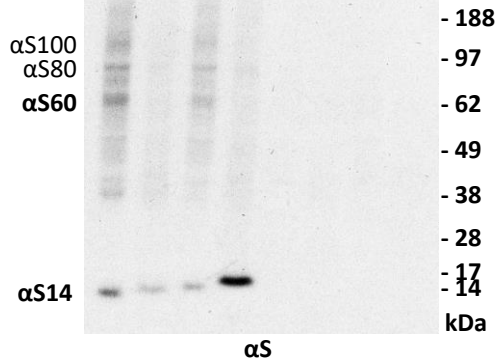


Fig. S1: α S and β S WT vs. 3K crosslinking/sequential extraction. M17D neuroblastoma cells were transfected with the indicated constructs for 48 h and subjected to 1 mM DSG crosslinking followed by sequential extraction (PBS, cytosol = C; TX-100, membrane = M). WB for α S, β S, DJ-1 and transferrin receptor (Tfr). N = 2 independent experiments performed in 3 and 4 biological replicates, respectively (n = 3, 4). Graphs are means \pm stdev; ****, p < 0.0001; ***, p < 0.001 **, p < 0.01.

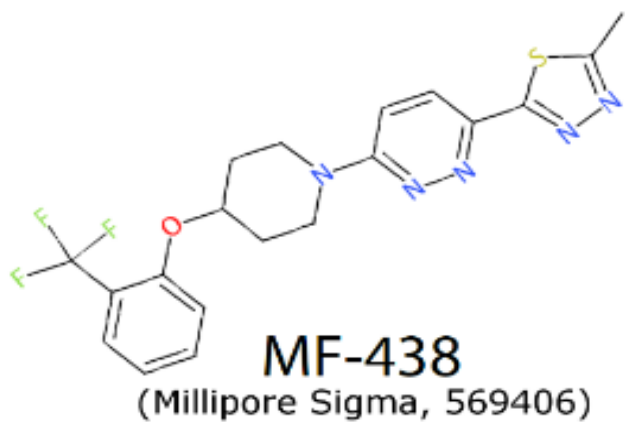


Fig. S2: Chemical Structure of the SCD inhibitor MF-438