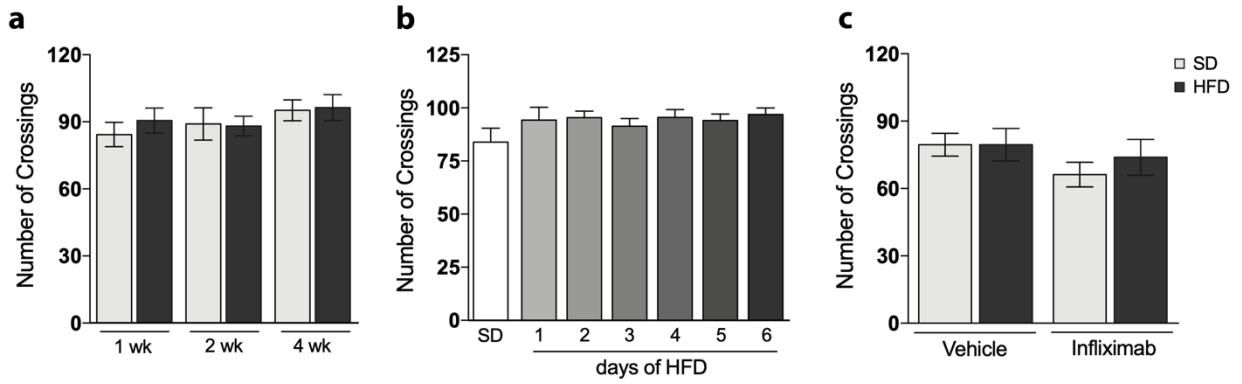
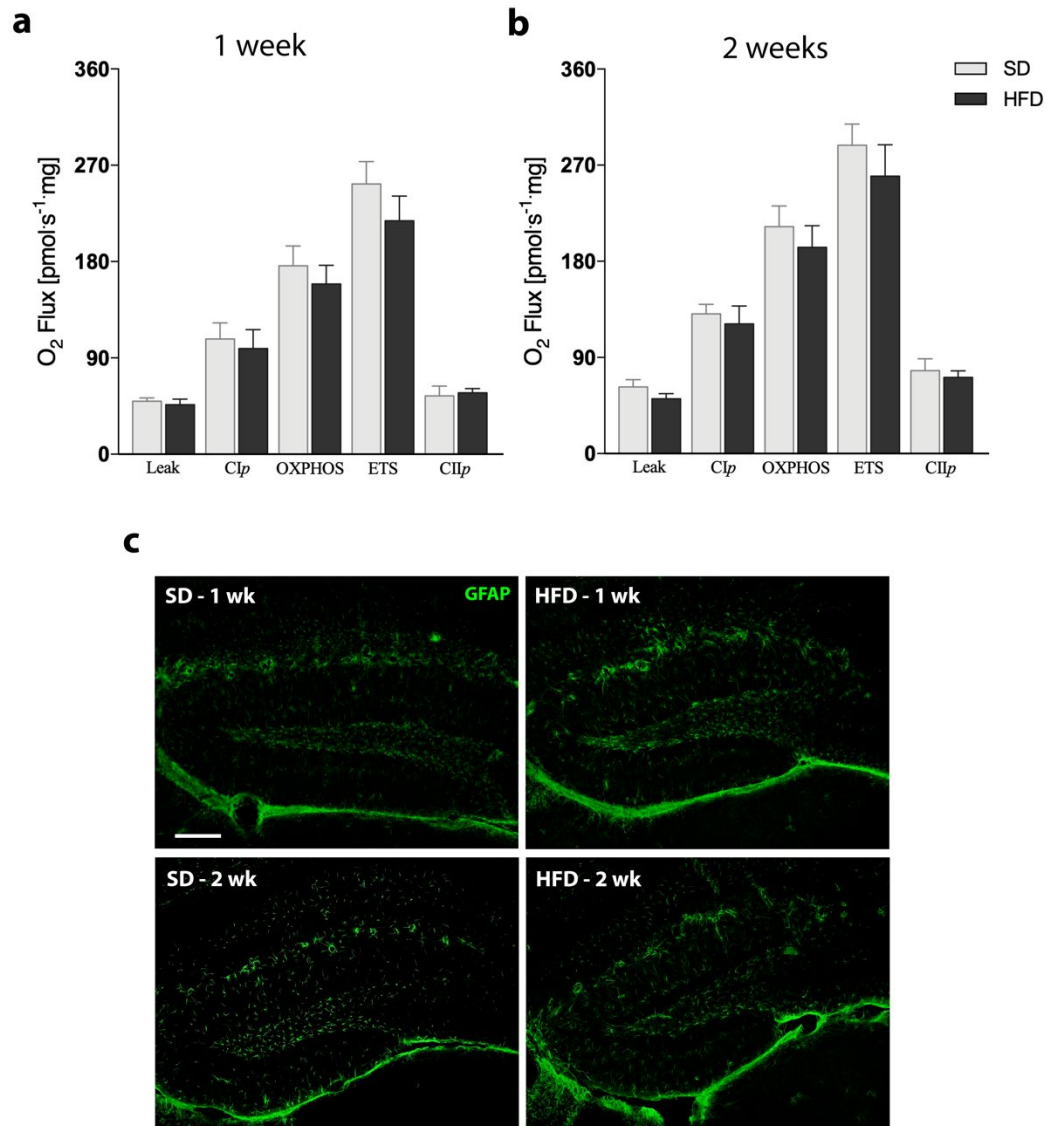


Supplementary Material

1 Supplementary Figures



Values are mean \pm SEM.



Supplementary Figure 2. Mitochondrial function and astrocyte activation within 1 and 2 weeks of HFD. **a-b)** Respirometric measurements by oxygen flux in the hippocampus of mice submitted to 1 (a) and 2 (b) weeks of SD or HFD (n= 5-6). **c)** Representative images of GFAP immunolabeling in the hippocampus of 1 and 2 weeks SD and HFD-treated mice (n= 4). Scale bar = 150 μ m. Values are mean \pm SEM.