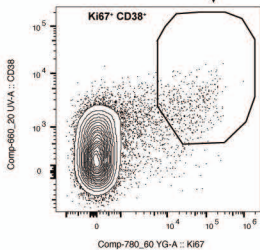
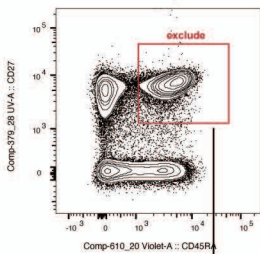
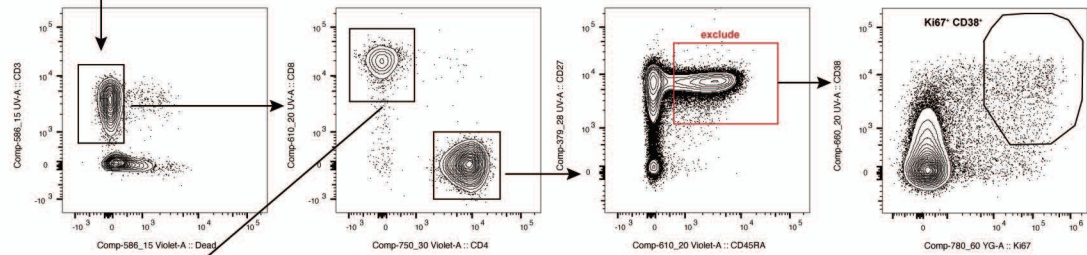
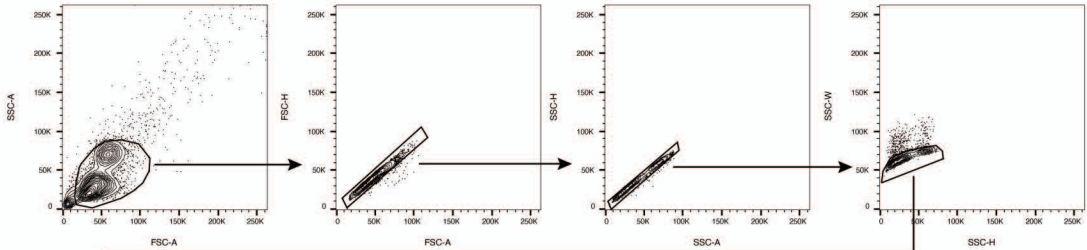
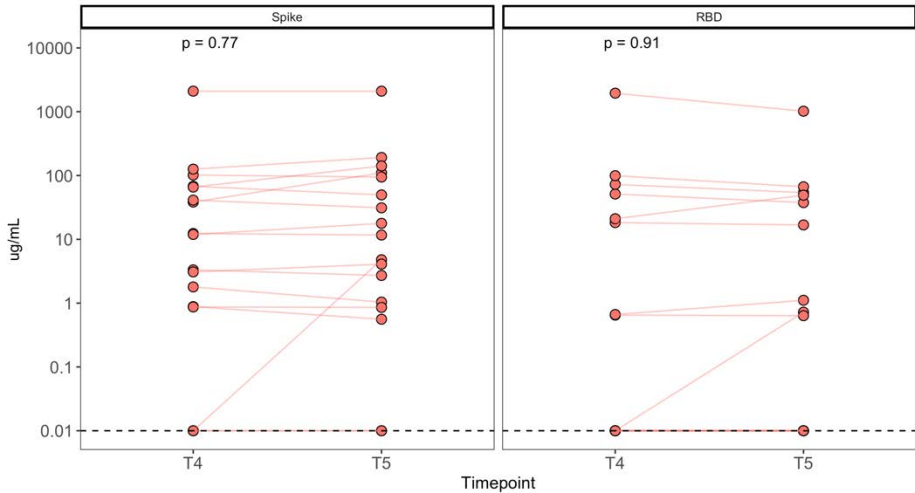

Supplementary information

Cellular and humoral immune responses following SARS-CoV-2 mRNA vaccination in patients with multiple sclerosis on anti-CD20 therapy

In the format provided by the authors and unedited



Spike and RBD serologies in MS-aCD20 patients



Supplementary Table 1.

Antigen-specific memory B cells	Timepoint	Comparison	p - value	method
Spike ⁺	T2	HC vs MS-aCD20	9.20E-06	Wilcoxon
Spike ⁺	T3	HC vs MS-aCD20	1.10E-05	Wilcoxon
Spike ⁺	T4	HC vs MS-aCD20	2.60E-05	Wilcoxon
Spike ⁺	T5	HC vs MS-aCD20	1.10E-05	Wilcoxon
RBD ⁺	T2	HC vs MS-aCD20	5.50E-06	Wilcoxon
RBD ⁺	T3	HC vs MS-aCD20	3.30E-06	Wilcoxon
RBD ⁺	T4	HC vs MS-aCD20	1.50E-05	Wilcoxon
RBD ⁺	T5	HC vs MS-aCD20	8.70E-06	Wilcoxon

Supplementary Table 2.

Antibody reactivity	Fluorochrome Conjugation	Clone	Supplier	Catalog #	Dilution
CD27	BUV 395	L128	BD	563815	1:200
CD71	BUV 496	M-A712	BD	750652	1:50
CD3	BUV 563	UCHT1	BD	748569	1:200
CD8	BUV 615	RPA-T8	BD	751518	1:1600
CD38	BUV 661	HIT2	BD	612969	1:200
CCR6	BUV 737	11A9	BD	612780	1:100
HLA-DR	BUV 805	G46-6	BD	748338	1:200
CTLA4	BV 421	BNI3	BD	562743	1:100
PD-1	BV 480	EH12.11	BD	566112	1:50
CCR7	BV 510	G043H7	Biologend	353232	1:100
Zombie Yellow	BV 570	-	Biologend	423103	1:500
CD45RA	BV 605	HI100	Biologend	304134	1:100
CD25	BV 650	M-A251	BD	563719	1:100
CXCR3	BV 711	G025H7	Biologend	353732	1:100
CD4	BV 750	SK3	BD	566355	1:2000
ICOS	BV 785	C398.4A	Biologend	313534	1:50
SLAM	AF 488	A12 (7D4)	Biologend	306312	1:50
CD127	BB 700	HIL-7R-M21	BD	566398	1:100
CXCR4	PE-Cy5	12G5	Biologend	306508	1:500
FoxP3	PE-Cy5.5	PCH101	Fisher	35-4776-42	1:50
Ki67	PE-Cy7	B56	BD	561283	1:400
T-bet	AF 647	4B10	Biologend	644804	1:200
CXCR5	APC-R700	RF8B2	BD	565191	1:50
Bcl-6	APC-Cy7	K112-91	BD	563581	1:100