

Self-assembly system based on cyclodextrin for targeted delivery of cannabidiol

Panyong Zhu^{1,a}, Pin Lv^{1,a,b,*}, Yazhou Zhang^a, Rongqiang Liao^{c,*}, Jing Liu^d, Rong Guo^b,
Xuan Chen^b, Xiali Liao^a, Chuanzhu Gao^a, Kun Zhang^e, Ming Yang^{b,*}, Bo Yang^{a,*}

a: Faculty of Life Science and Technology, Kunming University of Science and Technology, Kunming 650500, PR China.

b: Industrial Crop Research Institute, Yunnan Academy of Agricultural Sciences, Kunming, 650205, PR China.

c: Department of pharmacy, Chongqing Emergency Medical Center, Chongqing University Central Hospital, Chongqing 400014, PR China.

d: The Affiliated of Stomatology, Kunming Medical University, Kunming 650000, PR China.

e: School of Agriculture, Yunnan University, Yunnan University, Kunming 650500, PR China.

Contents

1. Standard curve of AD-CBD	2
2. ¹ H NMR spectra of AD-CBD.....	2
3. ¹³ C NMR spectra of AD-CBD.....	3
4. ESI-MS of AD-CBD	3
5. The stability of AD-CBD/BIO-CD in different pH media	4

* Corresponding author. E-mail addresses: lvpin_342526463@qq.com (P. Lv), Rongqiang Liao liaorongqiang@126.com (R. Liao), yangbo6910@sina.com (B. Yang), ymhemp@163.com (M. Yang).

1. These authors have contributed equally to this work and share first authorship.

Experimental section.

1. Standard curve of AD-CBD

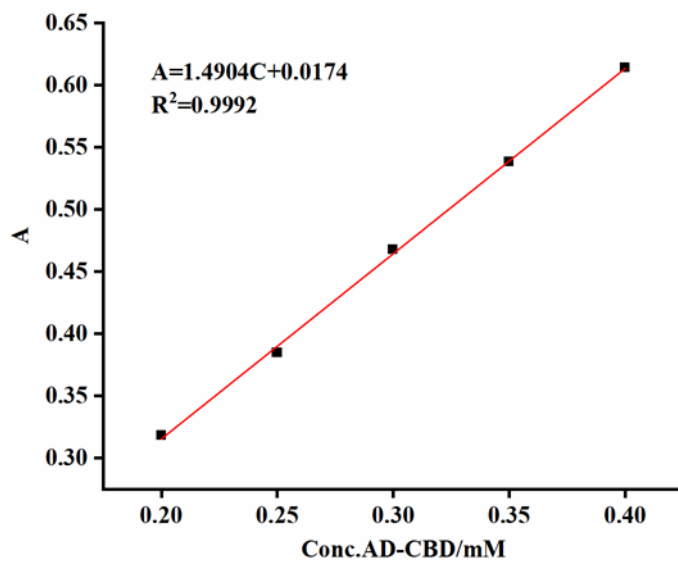


Fig. S1. Standard curve of AD-CBD.

2. ^1H NMR spectra of AD-CBD.

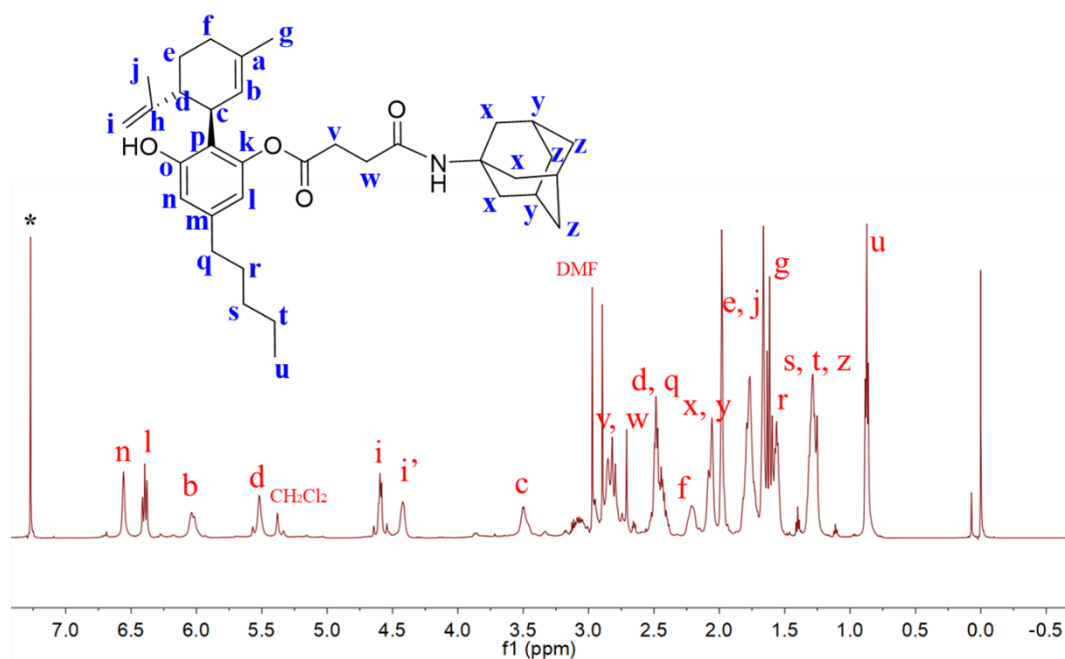


Fig. S2. ^1H NMR spectra of AD-CBD.

3. ^{13}C NMR spectra of AD-CBD

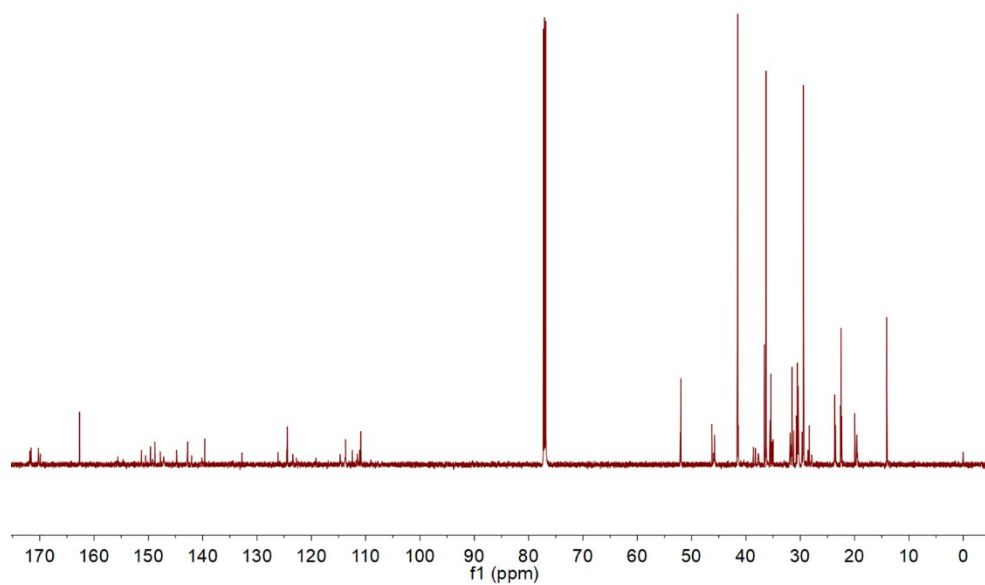


Fig. S3. ^{13}C NMR spectra of AD-CBD.

4. ESI-MS of AD-CBD

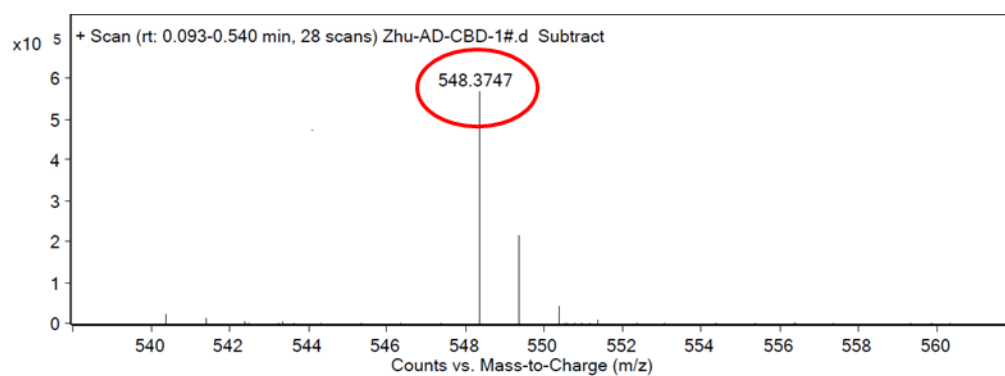


Fig. S4. ESI-MS of AD-CBD.

5. The stability of AD-CBD/BIO-CD in different pH media

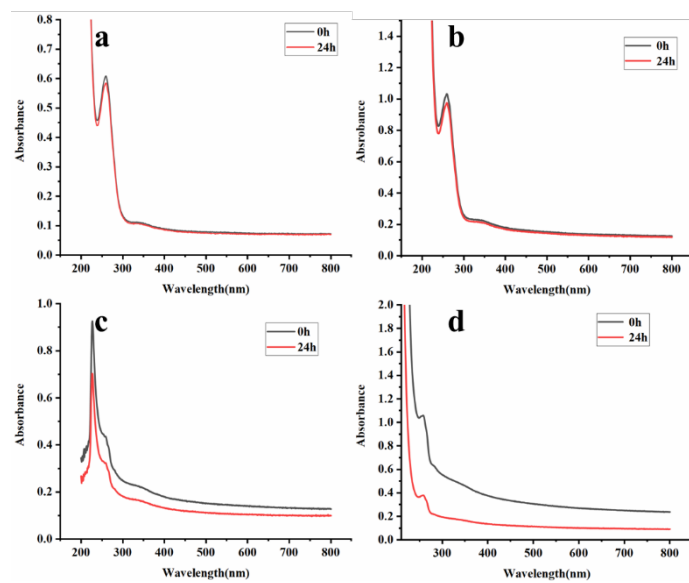


Fig. S5. The stability of AD-CBD/BIO-CD in different pH media