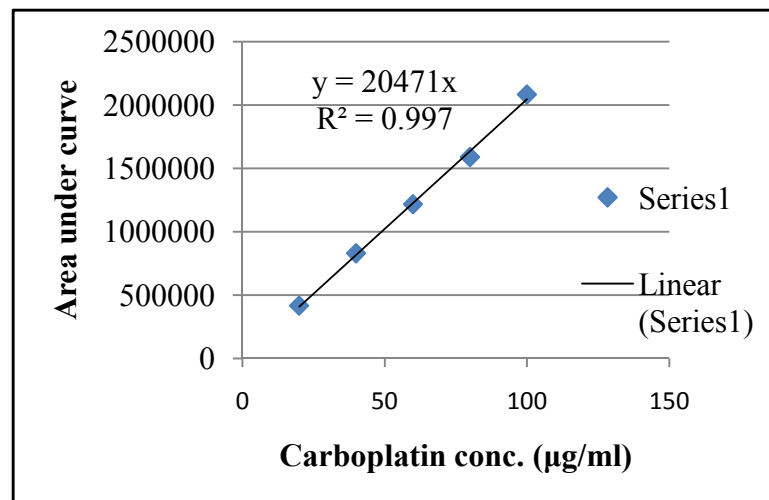


Supplementary information 1: CPT estimation plot

CPT Concentration (µg/ml)	Area under curve
20	418832
40	831651
60	1218480
80	1590622
100	2083623

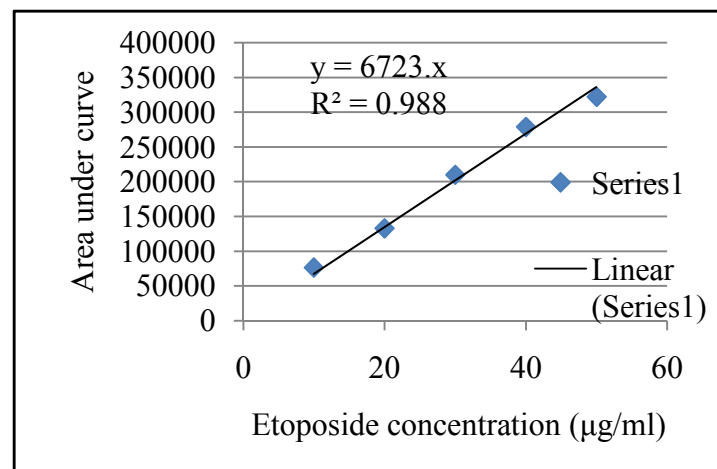


Supplementary information 2: CPT encapsulation and loading efficiency

CPT Concentration (µg/ml)	Lf-Nps concentration (µg/ml)	Area under curve	Encapsulated drug conc. (µg/ml)	Encapsulation efficiency (%)	Loading capacity (%)
50	250	587081	28.689	57.37931	11.47586
50	250	502398	24.556	49.11367	9.822734
100	500	1331801	65.034	65.03453	13.00691
100	500	1475429	72.044	72.04407	14.40881
150	750	1823865	89.048	59.36595	11.87319
150	750	1685743	82.308	54.87207	10.97441

Supplementary information 3: ETP estimation plot

ETP concentration (µg/ml)	Area under curve
10	26914
20	80874
30	124118
40	203676
50	272364



Supplementary information 4: ETP encapsulation and loading efficiency

ETP concentration (µg/ml)	Lf-Nps concentration (µg/ml)	Area under curve	Encapsulated drug conc. (µg/ml)	Encapsulation Efficiency (%)	Loading capacity (%)
50	250	90400	21.754	43.508	8.701
50	250	91217	21.885	43.771	8.754
100	500	182430	36.578	36.578	7.315
100	500	1919595	38.113	38.113	7.622
150	750	271036	50.851	33.901	6.780
150	750	257678	48.701	32.467	6.493