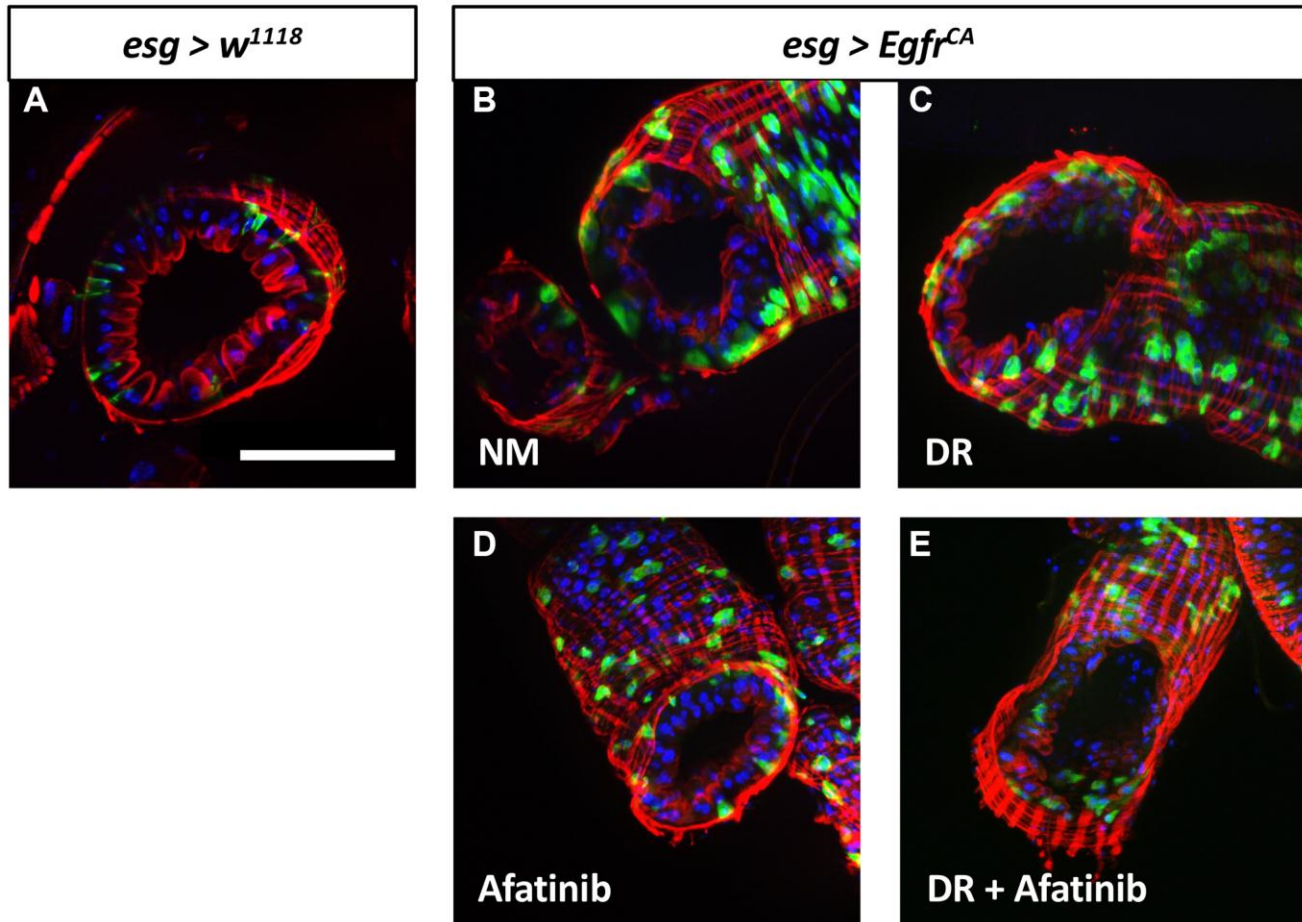
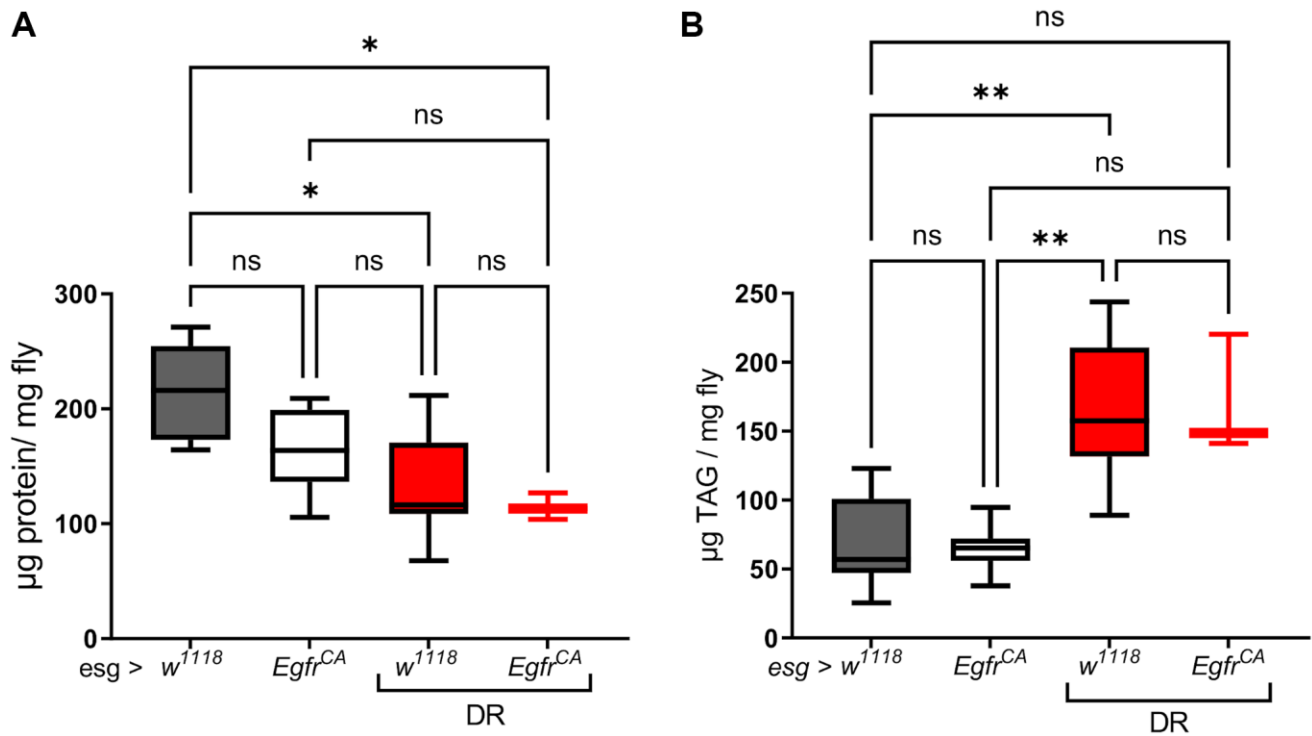


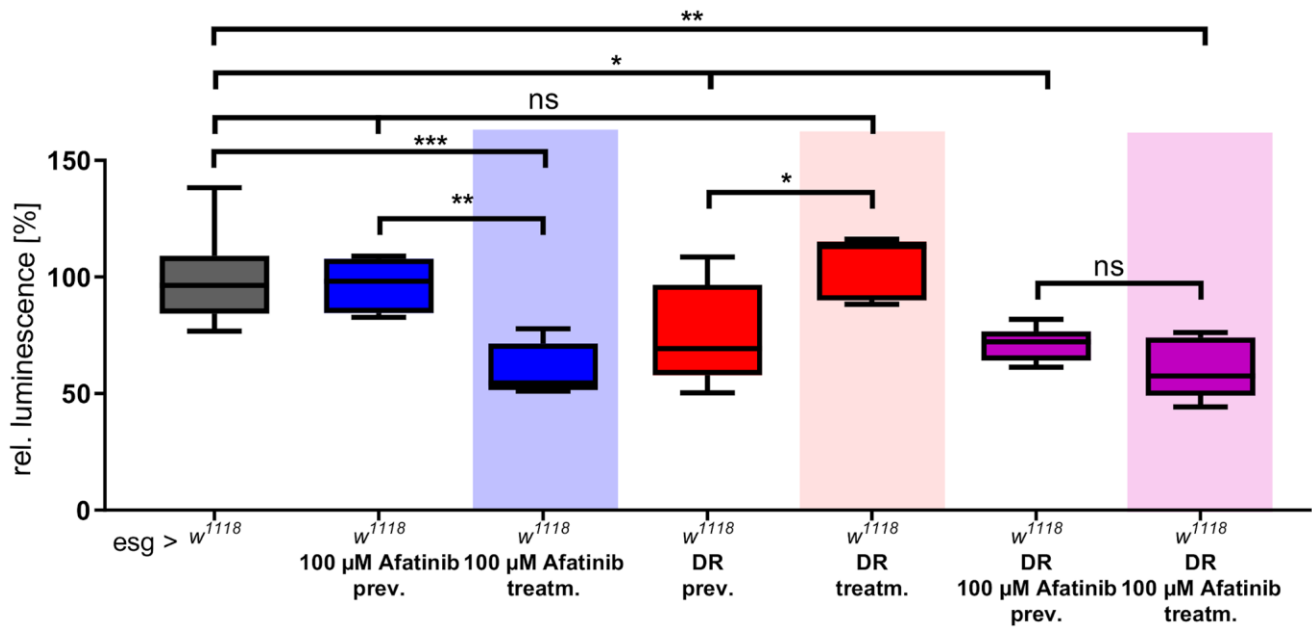
SUPPLEMENTARY FIGURES



Supplementary Figure 1. Transverse sections through *Drosophila* abdomen of controls (*esg > w¹¹¹⁸*) and *Egfr^{CA}* (*esg > Egfr^{CA}*) after 5 days of induction at 29°C. (A) Control animals on NM. (B) *Egfr^{CA}* animals on NM, (C) DR, (D) 100 μM Afatinib or (E) DR + 100 μM afatinib. Abbreviations: NM = normal medium; DR = dietary restriction; green = GFP: ISC; blue = DAPI: DNA; red = Phalloidin, actin. Scale bar = 100 μm.



Supplementary Figure 2. (A) Protein content and (B) triacylglyceride content of controls (*esg > w¹¹¹⁸*) and *esg > Egfr^{CA}* after 15 days of induction. Abbreviation: DR = dietary restriction. Significances were calculated with ANOVA and Tukey test and are marked with lines. ns = not significant, * = $p < 0.05$, ** = $p < 0.01$, *** = $p < 0.001$, **** = $p < 0.0001$. $n = 3-11$.



Supplementary Figure 3. Relative luminescence of *esg > w¹¹¹⁸* animals after 15 days of induction at 29°C exposed to dietary restriction and afatinib. Abbreviations: DR = dietary restriction, prev. = prevention. Significances were calculated with one-way ANOVA and Tukey test and are marked with lines. ns = not significant, * = $p < 0.05$, ** = $p < 0.01$, *** = $p < 0.001$, **** = $p < 0.0001$. $n = 5-8$.