

*Staphylococcus aureus* iron-regulated surface determinant B (IsdB) protein interacts with von Willebrand factor and promotes adherence to endothelial cells

Mariangela J Alfeo<sup>1</sup>, Anna Pagotto<sup>2</sup>, Giulia Barbieri<sup>3</sup>, Timothy J Foster<sup>4</sup>, Karen Vanhoorelbeke<sup>5</sup>, Vincenzo De Filippis<sup>2</sup>, Pietro Speciale<sup>1</sup> & Giampiero Pietrocola<sup>1\*</sup>

<sup>1</sup>Department of Molecular Medicine, Biochemistry Unit, Viale Taramelli 3/b, 27100 Pavia, Italy.

<sup>2</sup>Department of Pharmaceutical and Pharmacological Sciences, Padua University School of Medicine, Via Marzolo 2, 35100 Padua, Italy.

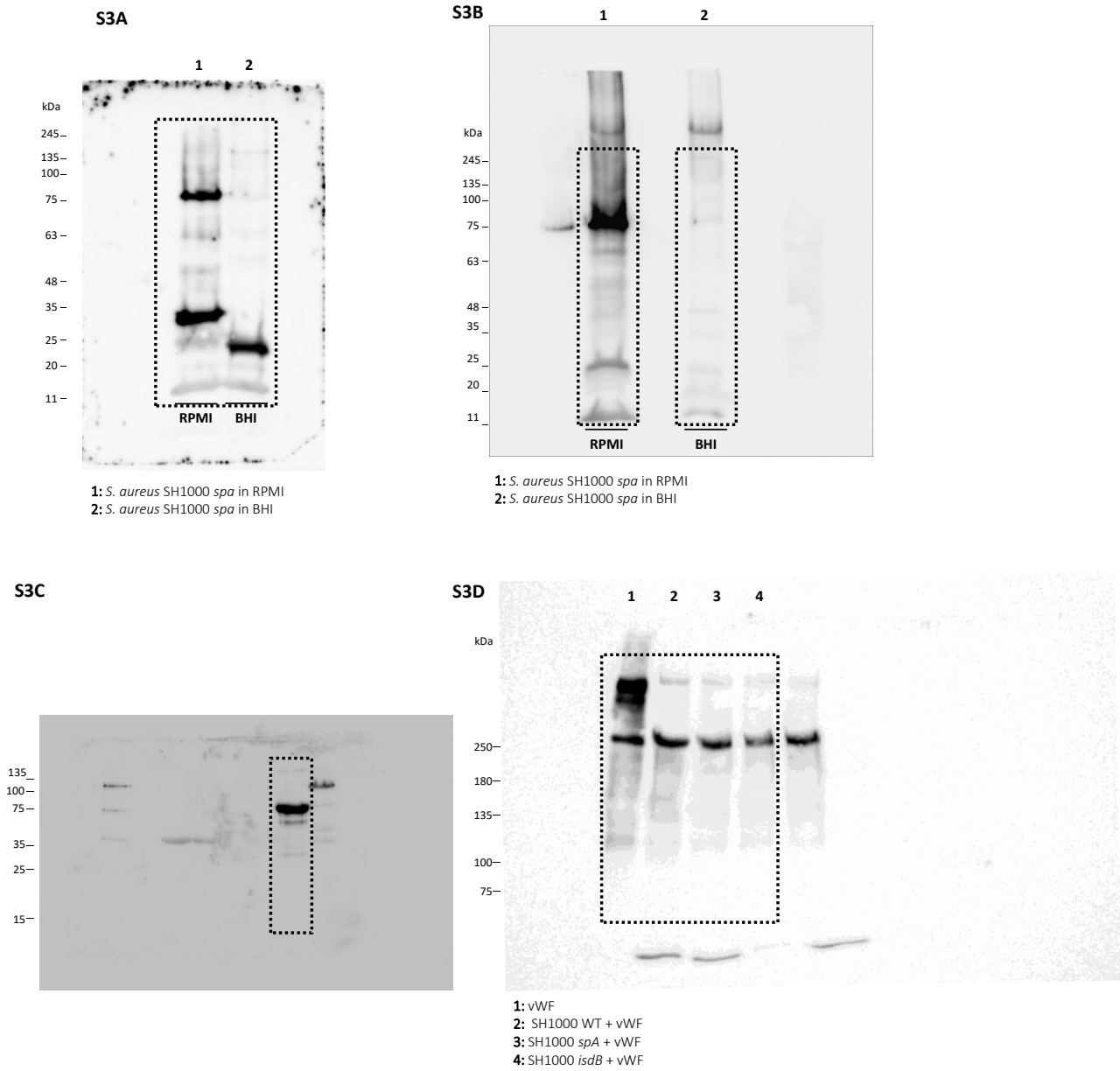
<sup>3</sup>Department of Biology and Biotechnology "Lazzaro Spallanzani", University of Pavia, Pavia, Italy.

<sup>4</sup>Microbiology Department, Trinity College Dublin, Dublin, Ireland.

<sup>5</sup>Laboratory for Thrombosis Research, KU Leuven Campus Kulak Kortrijk, Kortrijk, Belgium.

\*email: [giampiero.pietrocola@unipv.it](mailto:giampiero.pietrocola@unipv.it)

## SUPPLEMENTARY MATERIAL 2



**Fig S3 – Original full-length western blots corresponding to the main figures shown in the manuscript.** The cropped area used in the manuscript is shown by a dotted line frame in the original full western blots. *A* (Fig. 1A in the manuscript). *B* (Fig. 1B in the manuscript). *C* (inset of Fig. 1C in the manuscript). *D* (Fig. 2A in the manuscript).