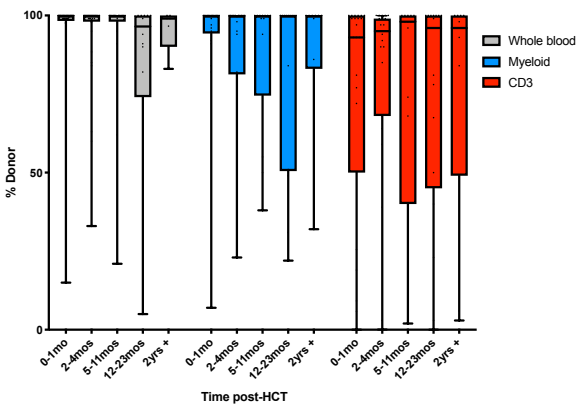
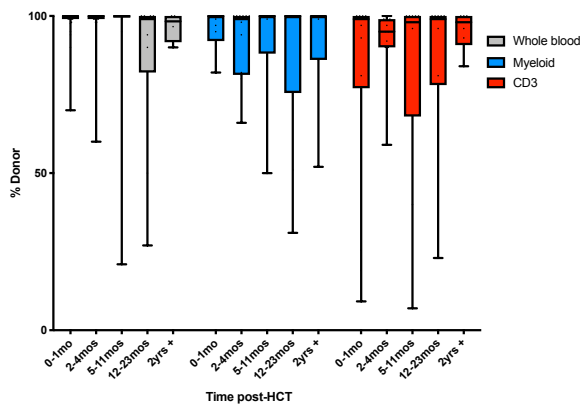


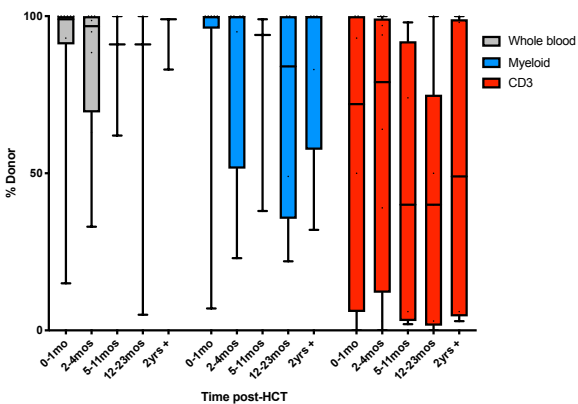
Donor chimerism for all patients



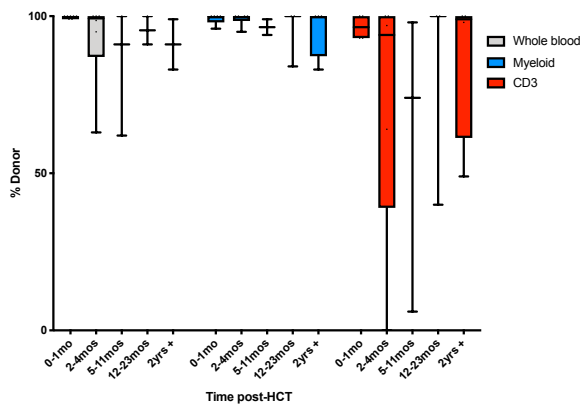
Donor chimerism in patients without DCI or GF



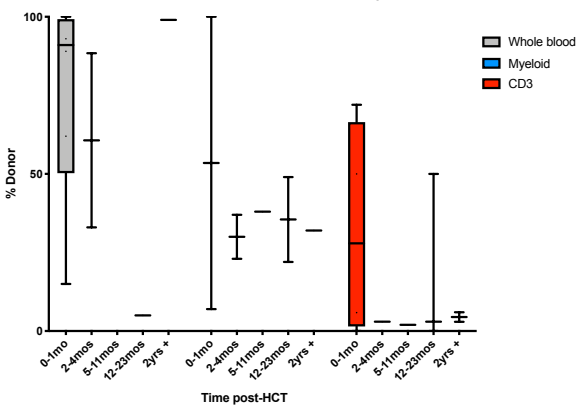
Donor chimerism in patients who ultimately received DCI or had GF



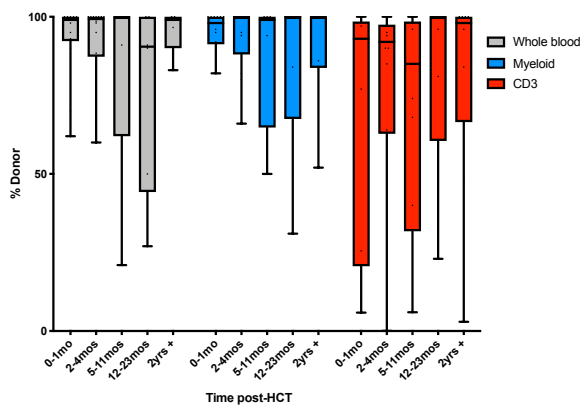
Donor chimerism in patients who ultimately received DCI without GF



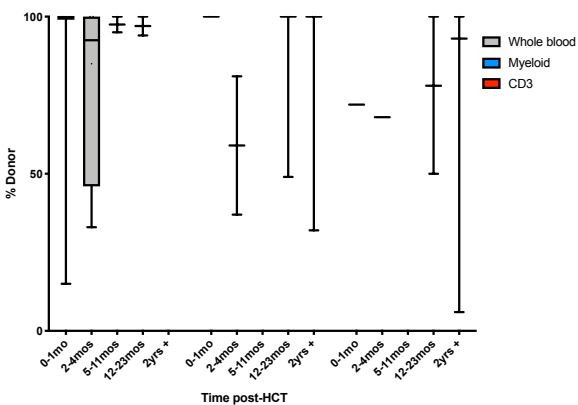
Donor chimerism in patients who ultimately had GF



Donor chimerism for patients who received RIC



Donor chimerism for patients who received RT-MAC



Donor chimerism for patients who received MAC

