

FIG E1. CONSORT diagram showing participant disposition. Five PLB participants did not initiate active treatment, and 3 VP100 participants discontinued before week 52 and did not receive open-label VP250 treatment. Fifty-nine participants (18 PLB-VP250, 18 VP100-VP250, and 23 VP250) completed the week 130 assessment. One PLB-VP250 participant withdrew before week 52 of active treatment; 6 participants (1 PLB-VP250, 3 VP100-VP250, 2 VP250) withdrew between weeks 52 and 130 of active treatment.

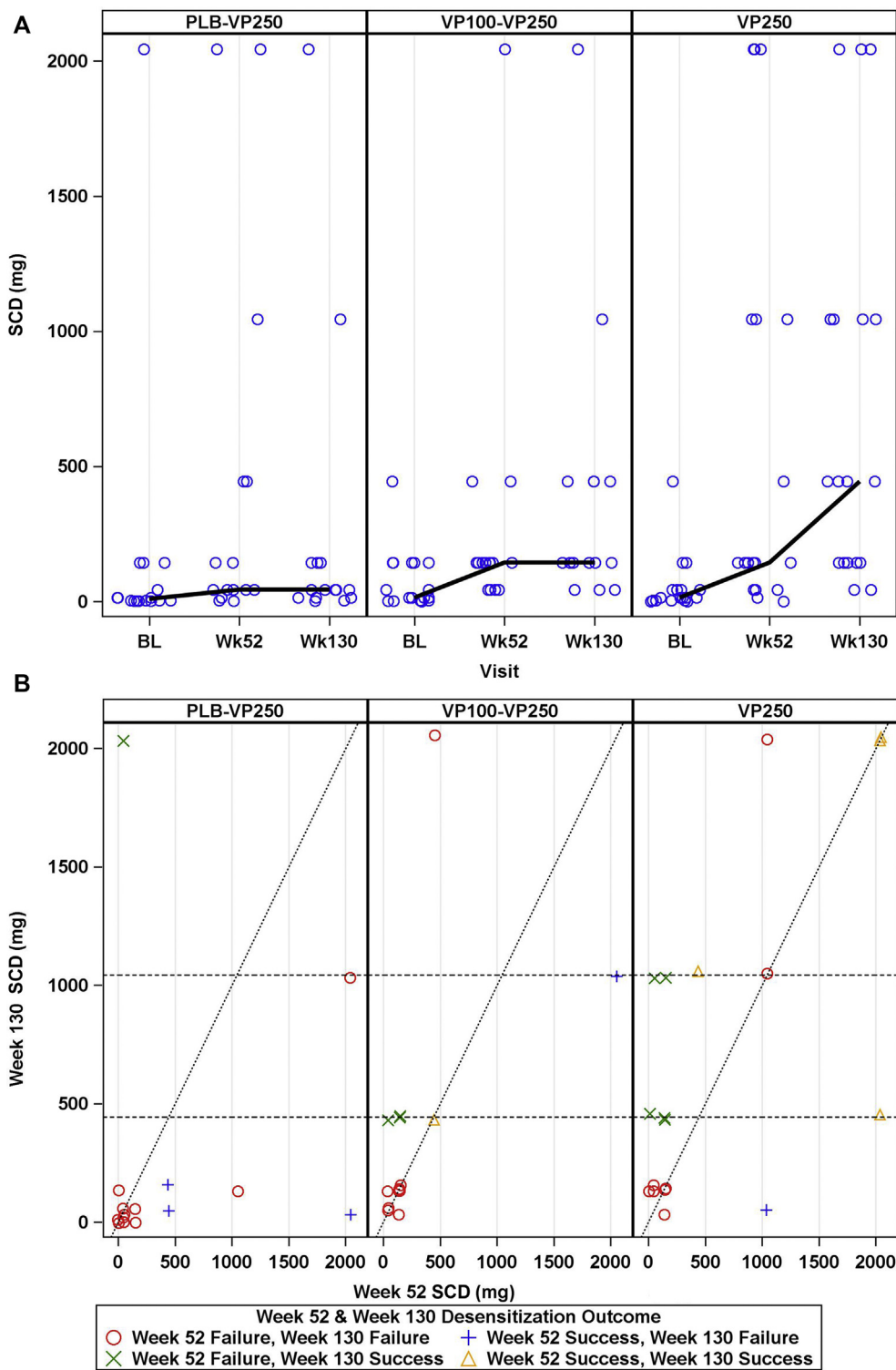


FIG E2. A, SCD from baseline to week 130 oral food challenge by treatment group in participants age 4 to 11 years. B, SCD at week 52 (x-axis) vs week 130 (y-axis). Values to the left of the diagonal line represent participants whose SCD at week 130 is higher than at week 52 in participants age 4 to 11 years. *BL*, Baseline.

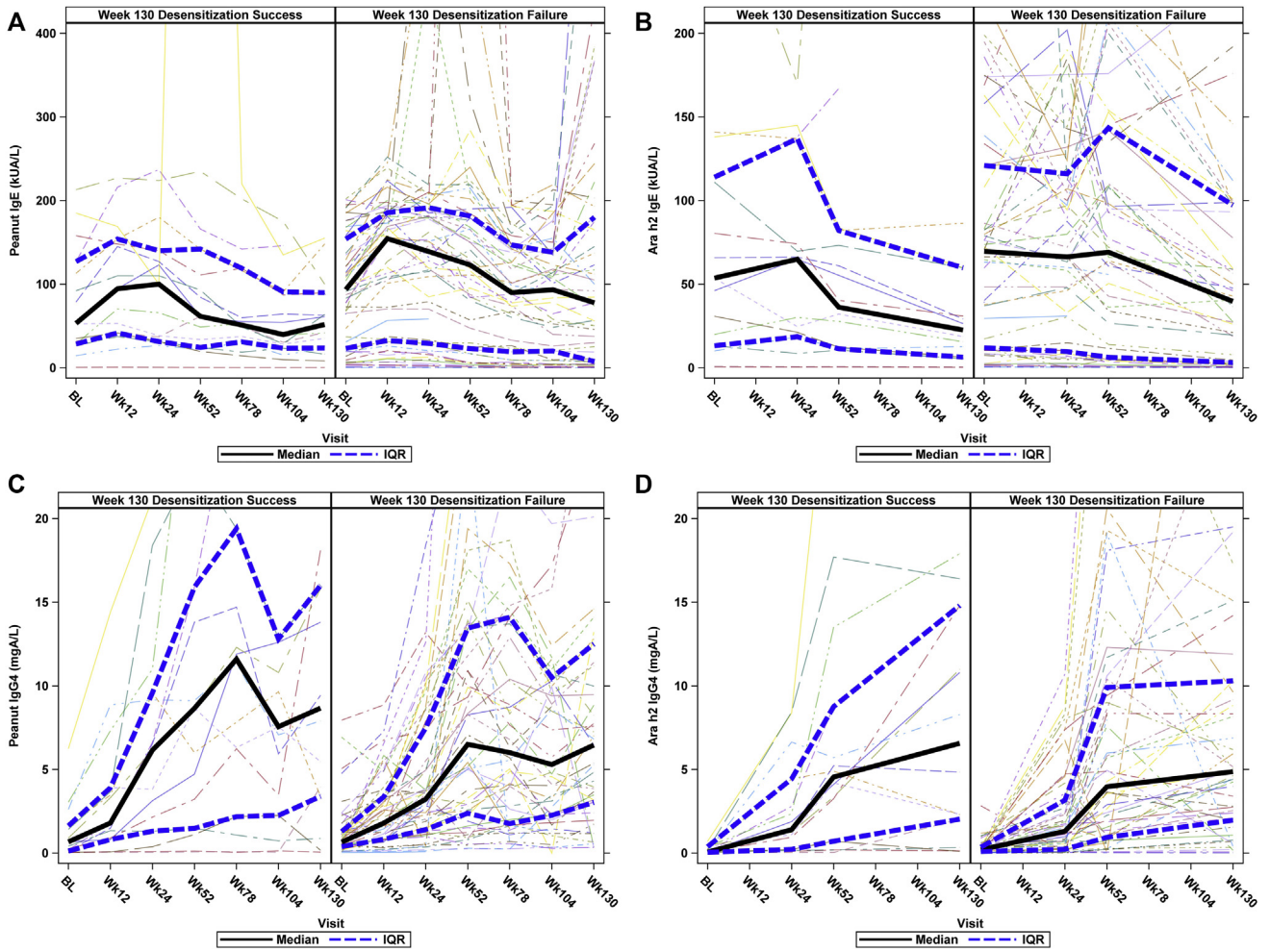


FIG E3. Immune parameters over time by week 130 desensitization success vs failure. **A**, Peanut IgE. **B**, Ara h2 IgE. **C**, Peanut IgG₄. **D**, Ara h2 IgG₄. Median peanut and Ara h2 IgE values were observed to be higher in week 130 desensitization failures, and median peanut and Ara h2 IgG₄ values were observed to increase in week 130 desensitization successes; these differences were not statistically significant. A solid black line represents the median, and blue hatched lines represent the upper and lower quartiles. *BL*, Baseline; *kU_A/L*, kilounits of antibody per liter.

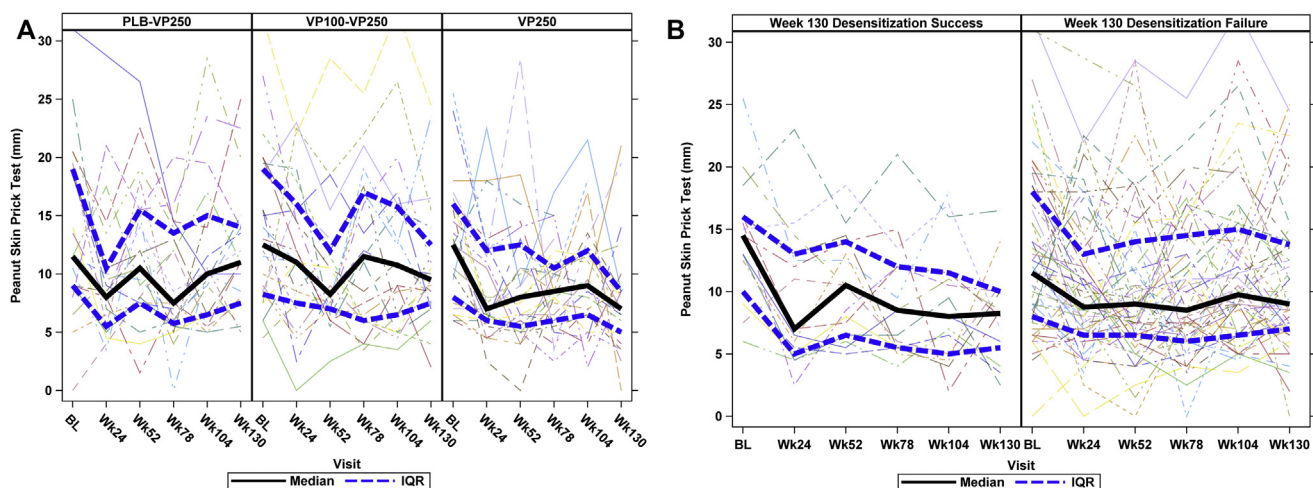


FIG E4. **A**, Peanut SPT over time by treatment group. No significant differences were noted over time or between treatment groups. **B**, Peanut SPT over time by treatment outcome at week 130. No significant difference in median peanut SPT between week 130 desensitization successes vs failures was observed. A solid black line represents the median, and blue hatched lines represent the upper and lower quartiles. *BL*, Baseline; *SPT*, skin prick test.

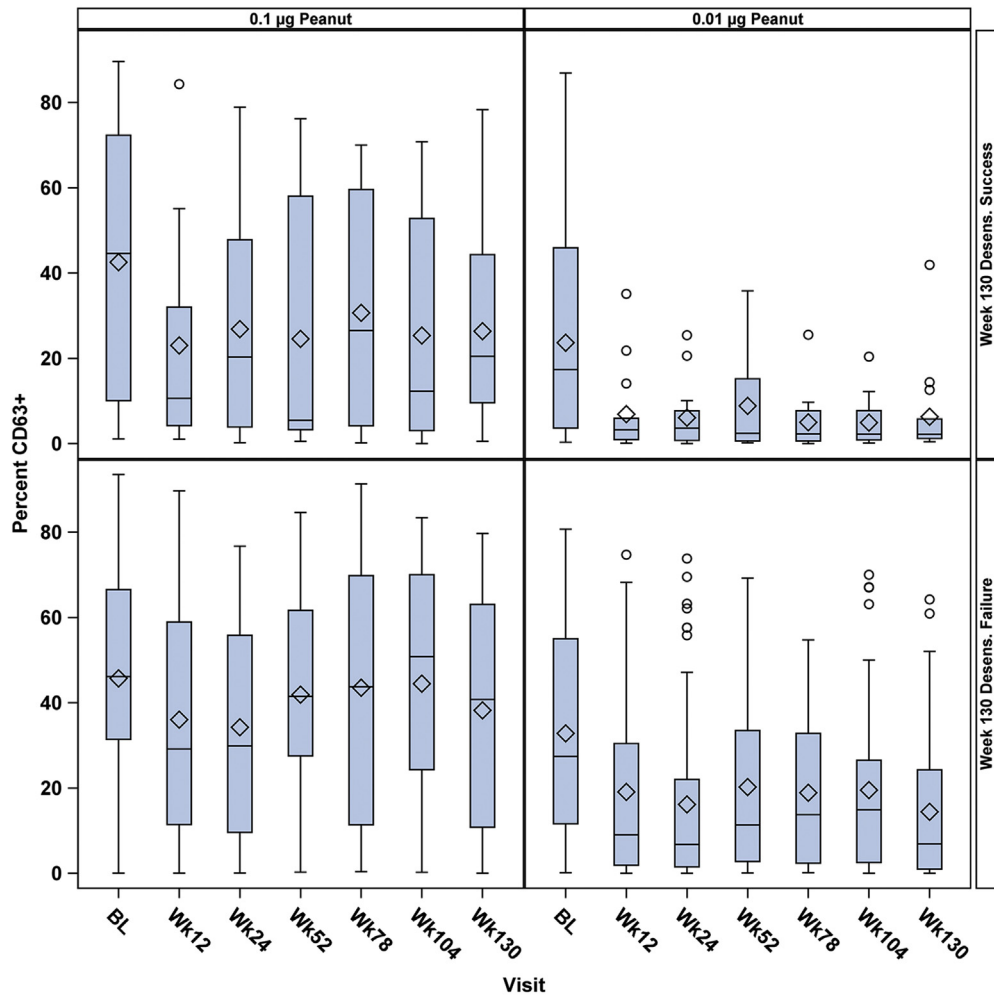


FIG E5. Effect of peanut EPIT on basophil activation (measured by percent CD63⁺ basophils) over time by week 130 desensitization success vs failure. Top row, week 130 desensitization success; bottom row, week 130 desensitization failure. Lines within the box plots represent the median, and the diamonds represent the mean. *BL*, Baseline.