

Fig. S1. Impact of CP treatment on viral burden. **(A, B)** Median vRNA and full-length (gRNA) levels in nasal lavages (A) and tracheal aspirates (B). The dashed line indicates limit of detection. **(C)** Results of Area under the curve analysis of total vRNA, full-length (gRNA) and sgRNA levels in nasal lavages and tracheal aspirates. Bars show mean with SEM. $n=2$ (CP treatment), $n=2$ (NP treatment), and $n=4$ (not treated).

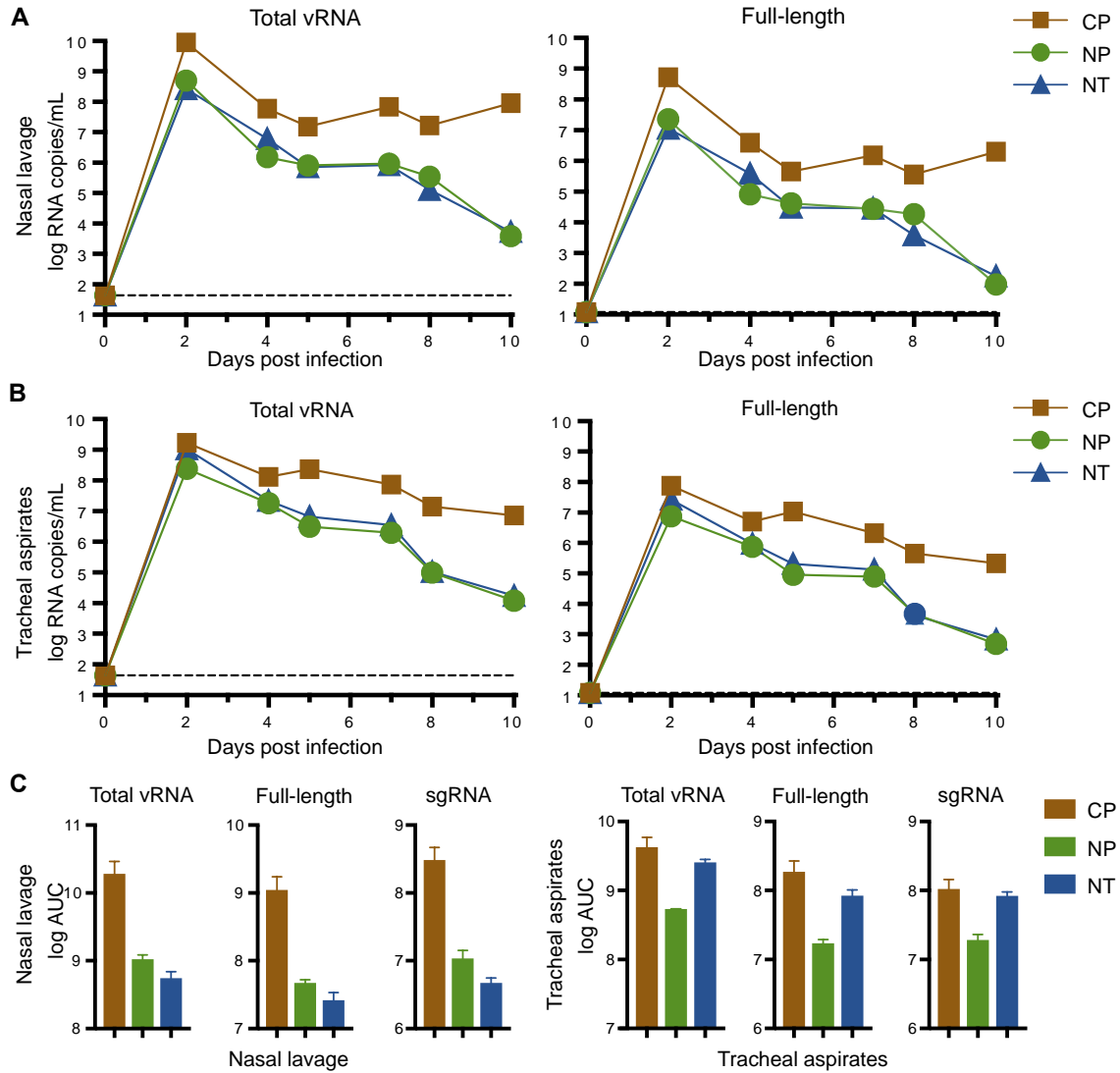


Fig. S2. Clinical markers of infection and COVID-19. Graphs show measurements in individual animals over time.

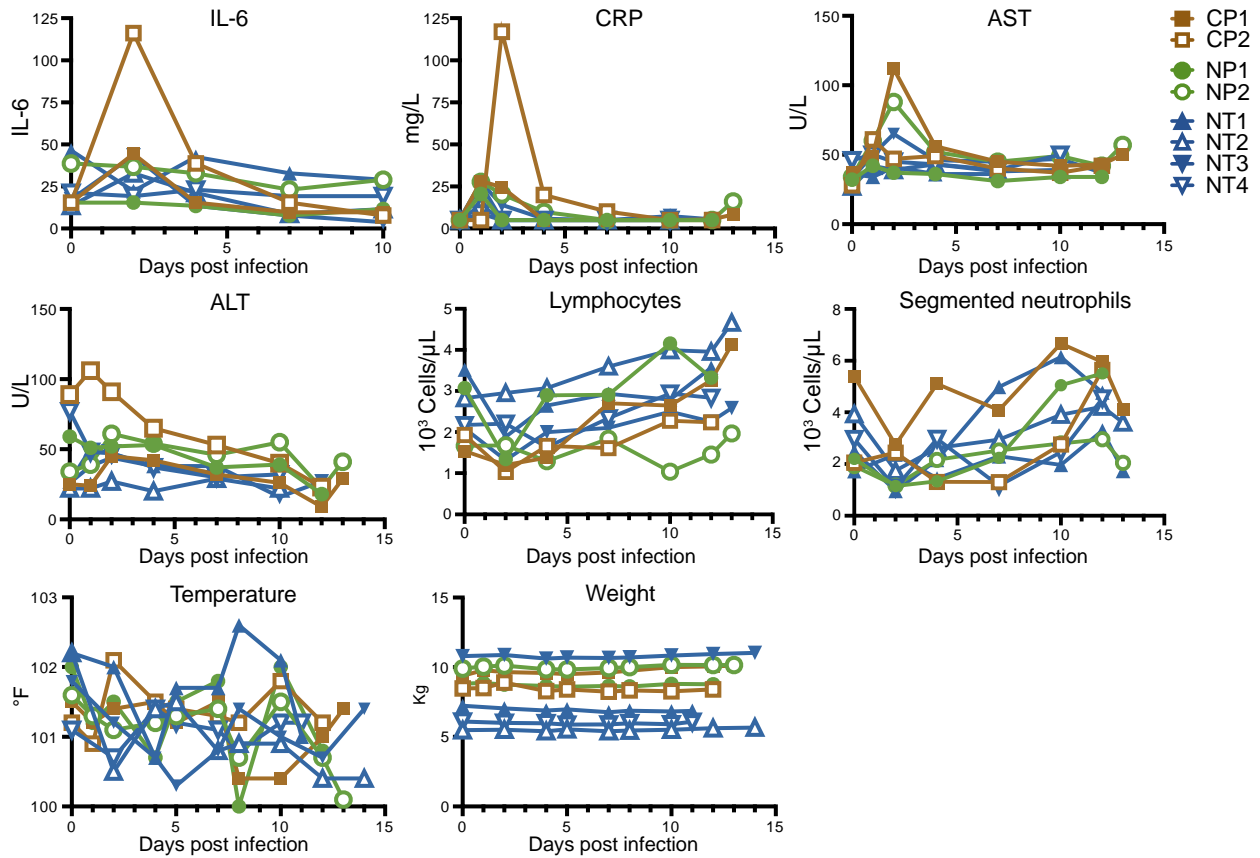


Fig. S3. Analysis of intra-host polymorphisms. **(A)** Read depths between the amplicon sequence approach (ARTIC) and metagenomic sequencing (mNGS). **(B)** Relationship between nucleotide diversity and viral loads. **(C)** Allele frequencies in recovered viral genomes.

