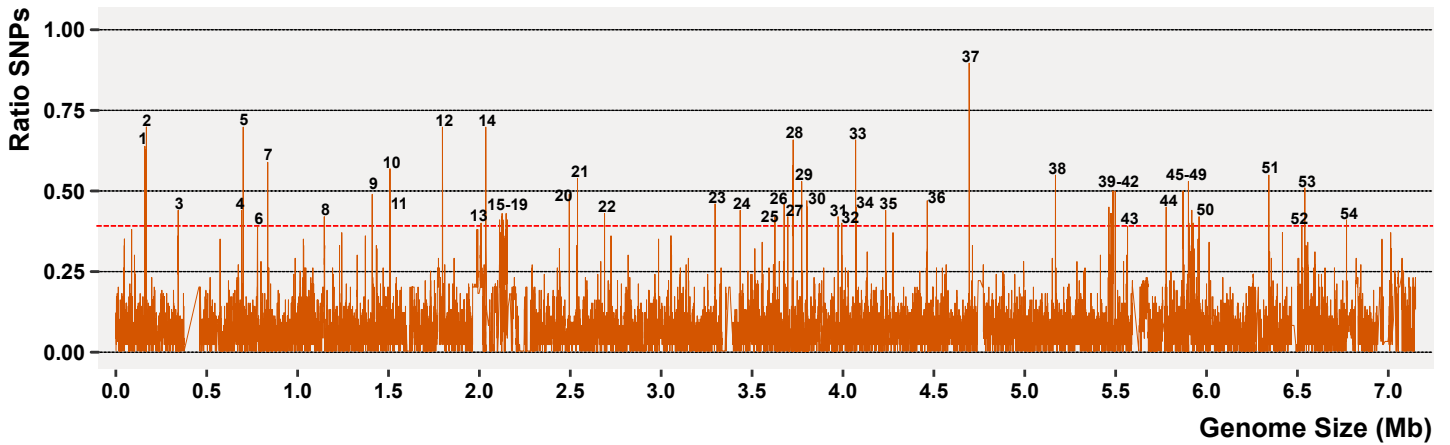


## Imipenem vs Imipenem/Relebactam



- |  |   |
|--|---|
| 1. Acetyltransferase                                     | 28. Hypothetical protein                                      |
| 2. <b>TonB-dependent siderophore receptor</b>            | 29. Endonuclease/exonuclease/phosphatase                      |
| 3. Amino acid adenylation domain protein                 | 30. <b>Low affinity iron permease</b>                         |
| 4. ADP-ribosyltransferase                                | 31. <i>Intergenic spacer</i>                                  |
| 5. <i>Intergenic spacer</i>                              | 32. Hypothetical protein                                      |
| 6. AraC transcriptional regulator                        | 33. LysR family transcriptional regulator                     |
| 7. <i>Intergenic spacer</i>                              | 34. Short-chain dehydrogenase                                 |
| 8. Alcohol dehydrogenase                                 | 35. transcriptional regulator                                 |
| 9. <b>MFS transporter</b>                                | 36. ATPase, type IV, pilus assembly, PilB                     |
| 10. Diguanylate cyclase/phosphodiesterase                | 37. <b>Methyl-accepting chemotaxis protein</b>                |
| 11. RraB-like superfamily                                | 38. <b>Lipoprotein-releasing system transmembrane protein</b> |
| 12. N-acetyltransferase                                  | 39. Hypothetical protein                                      |
| 13. Conjugal transfer protein TrbE                       | 40. Hypothetical protein                                      |
| 14. <i>Intergenic spacer</i>                             | 41. Flagellar hook-associated protein FlgK                    |
| 15. Integrase  | 42. Flagellin   |
| 16. RepA replication protein                             | 43. Hypothetical protein                                      |
| 17. RepA replication protein                             | 44. <i>Intergenic spacer</i>                                  |
| 18. ATPase   | 45. <b>Type VI secretion system</b>                           |
| 19. Hypothetical protein                                 | 46. <b>Cyclic peptide transporter</b>                         |
| 20. <i>Intergenic spacer</i>                             | 47. TonB-dependent siderophore receptor                       |
| 21. Glycosyltransferase                                  | 48. Non-ribosomal peptide synthetase                          |
| 22. 16S rRNA (cytosine(967)-C(5))-methyltransferase RsmB | 49. Non-ribosomal peptide synthetase                          |
| 23. Disulfide bond formation protein DsbB                | 50. Outer membrane usher protein                              |
| 24. <i>Intergenic spacer</i>                             | 51. Acyl-CoA transferase                                      |
| 25. <i>Intergenic spacer</i>                             | 52. <b>Hemolysin activation/secretion protein</b>             |
| 26. <i>Intergenic spacer</i>                             | 53. Alkaline phosphatase L                                    |
| 27. <b>TonB-dependent receptor</b>                       | 54. Excinuclease ABC subunit A                                |