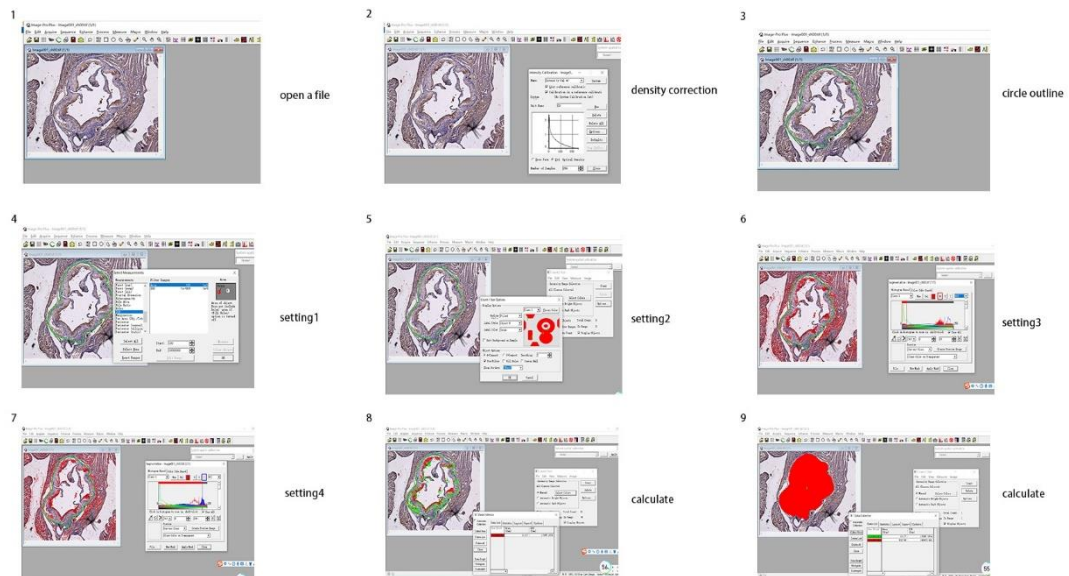


## Supplement figure 1

We use image pro plus to measure density. The following is the measurement procedure.



## Supplement figure 2

### Wound-healing migration assay

Increased migration and invasion activities were found in THP-1 cells cultured with Ox-LDL, and cell migration was inhibited in GDC0941+ox-LDL and MK2206+ox-LDL groups, especially in GDC0941+ox-LDL group.

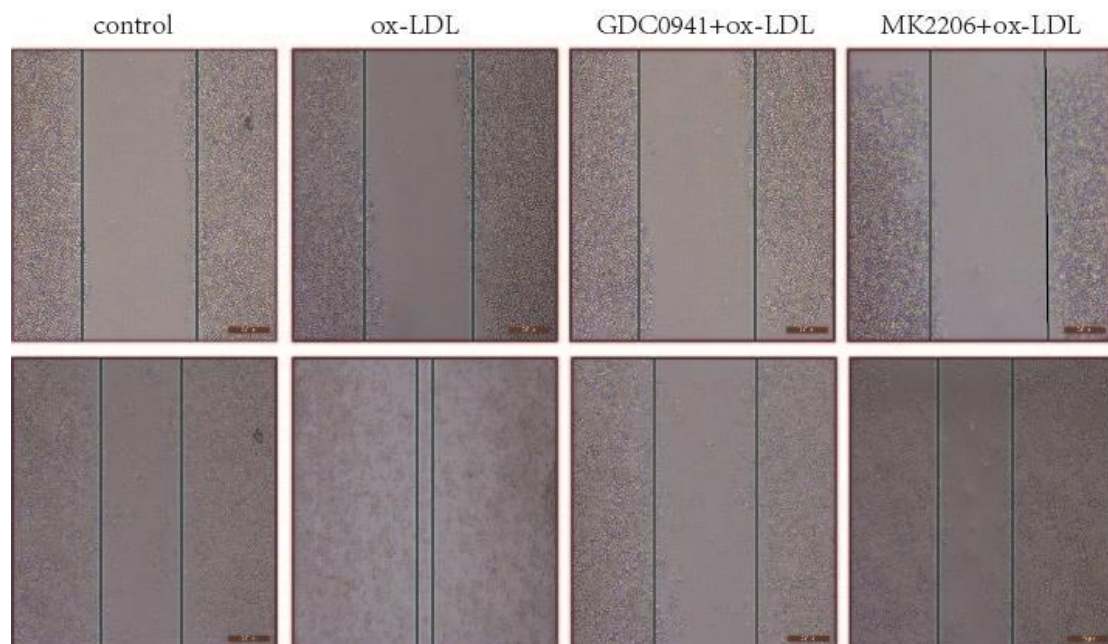


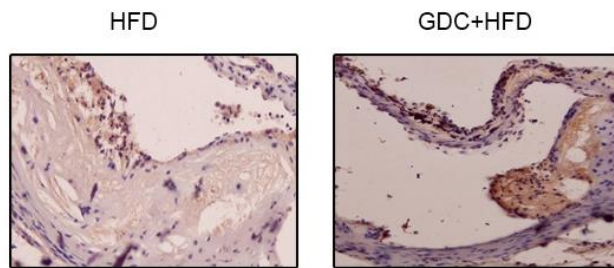
Figure legend

THP-1 monocyte-derived macrophages were treated with or without GDC0941/MK2206 followed by Ox-LDL. After 24 hours post-transfection, wound closure was photographed.

### Supplement figure 3

#### The expression of caspase-3 in mice treat with GDC0941

The expression of caspase-3 was remarkably increased in high-fat diet-induced atherosclerotic mice after treatment with GDC0941+HFD group.



#### Figure legend

The level of caspase-3 was assessed by immunohistochemical staining, and then photographed using an inverted microscope.