

Supplementary information

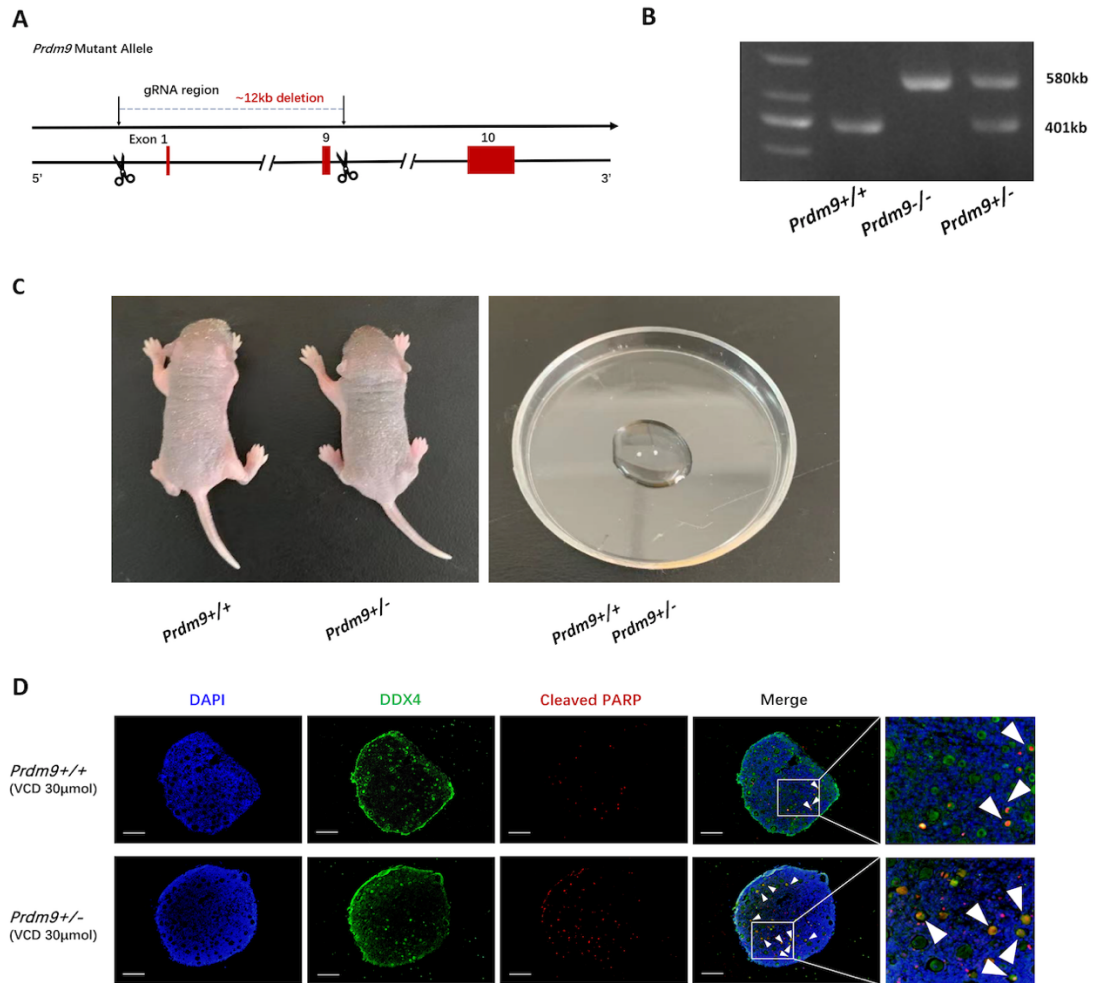


Figure S1. *Prdm9*^{+/-} oocytes were more vulnerable to exogenous stress. (A) Strategy of *Prdm9* knockout mice generation by CRISPR/Cas9. (B) The genotyping results of *Prdm9*^{+/+}, *Prdm9*^{-/-} and *Prdm9*^{+/-} mice. (C) *Prdm9*^{+/+} and *Prdm9*^{+/-} mice at PD5 and the ovaries. Petri dish diameter is 3.5 cm. (D) Sections from cultured ovaries were stained with DAPI (blue, marked DNA), DDX4 (green, marked cytoplasm of oocytes) and Cleaved PARP (red, marked apoptotic cells). The arrows indicated the apoptotic oocytes (DDX4 and Cleaved PARP positive). Scale bar: 100 μm.