

Supplemental Online Content

Piolanti A, Foran HM. Efficacy of interventions to prevent physical and sexual dating violence among adolescents: a systematic review and meta-analysis. *JAMA Pediatr*. Published online November 29, 2021. doi:10.1001/jamapediatrics.2021.4829

eMethods.

eFigure 1. Flow Diagram Summarizing the Article Selection Process

eFigure 2. Estimated Risk of Bias Across All Included Studies

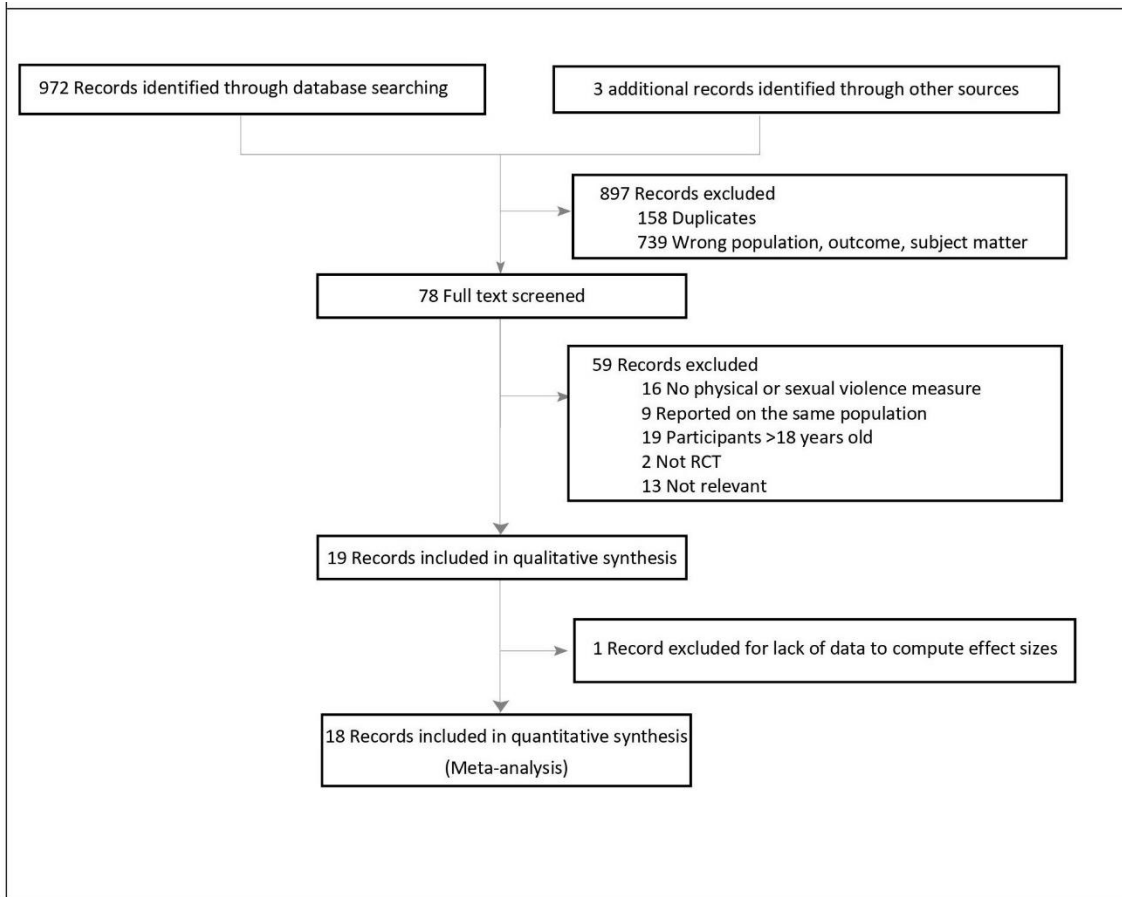
eFigure 3. Funnel Plot of Standard Error by Log Odds Ratio (Composite Overall effect)

eTable. Publication Bias

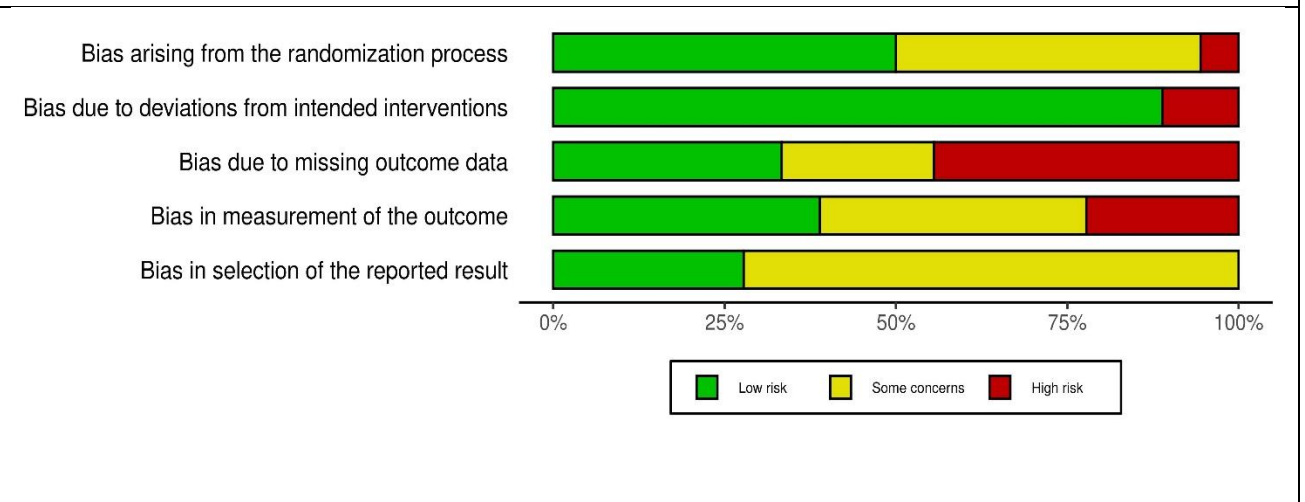
This supplemental material has been provided by the authors to give readers additional information about their work.

Search Strategy	
PubMed	<p>("intimate partner violence"[Mesh]) OR (("courtship"[Mesh] OR dating) AND ("Violence"[Mesh] OR "spouse abuse"[Mesh] OR "coercion"[Mesh])) OR ("dating violence") OR ((dating) AND (violence OR abuse OR victimization OR perpetration)) AND ("adolescent"[Mesh] OR "young people" OR student* OR youth or "young adults").</p> <p>Filter: Randomized-Controlled Trials</p>
PsycINFO/Eric/PsycArticles	<p>((dating.mp and violence.mp) or (dating.mp and abuse.mp) or dating violence.sh or dating violence.mp or intimate partner violence.sh or intimate partner violence.mp) AND (randomized controlled trials.sh OR randomized.mp or randomized trial.mp or RCT.mp) AND (Adolescent attitudes.sh or adolescent behavior.sh or adolescent.mp or young people.mp OR student* OR youth.sh or youth.mp or young adults.mp).</p>
Web Of Science	<p>(TS=(dating violence OR intimate partner violence OR spouse abuse) OR TS=(dating and violence) OR TS=(dating and abuse) OR TI=(dating and violence) OR AB=(dating and violence)) AND (TS=(randomized Controlled Trials OR randomized OR randomized trial OR RCT) OR TI=(randomized controlled trials OR randomized OR randomized trial OR RCT) OR AB=(randomized controlled trials OR randomized OR randomized trial OR RCT)) AND (TS=(adolescen* or student* or youth or young people or young adults) or TI=(adolescen* or student* or youth or young people or young adults) or AB=(adolescen* or student* or youth or young people or young adults))</p>

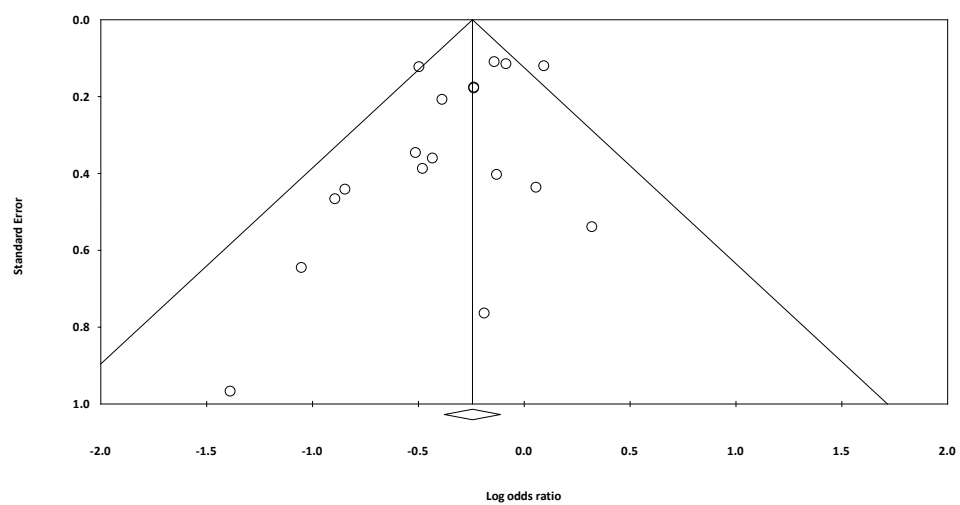
eFigure 1. Flow Diagram Summarizing the Article Selection Process



eFigure 2. Estimated Risk of Bias Across All Included Studies



eFigure 3. Funnel Plot of Standard Error by Log Odds Ratio (Composite Overall effect)



eTable. Publication Bias			
Variable	Egger test (<i>P</i>)	Trim-and-fill	
		Missing studies (n)	Adjusted Odds Ratio (95% CI)
Composite Overall effect	.04	3	0.80 (0.70 to 0.92)
Physical perpetration	.07	3	0.81 (0.65 to 1.00)
Physical survivorship	.09	3	0.83 (0.68 to 1.00)
Sexual perpetration	.20	2	0.90 (0.78 to 1.04)
Sexual survivorship	.04	1	0.91 (0.70 to 1.17)
Physical/Sexual perpetration	.12	2	0.80 (0.68 to 0.95)
Physical/Sexual survivorship	.04	4	0.81 (0.70 to 0.94)