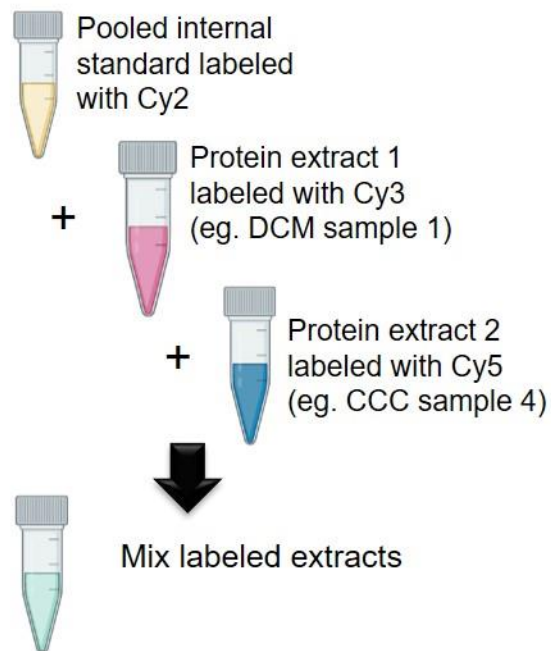


Sample labeling



2-D electrophoresis separation

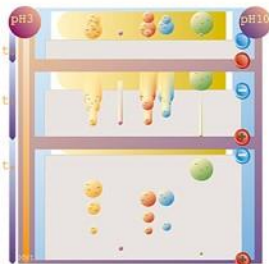
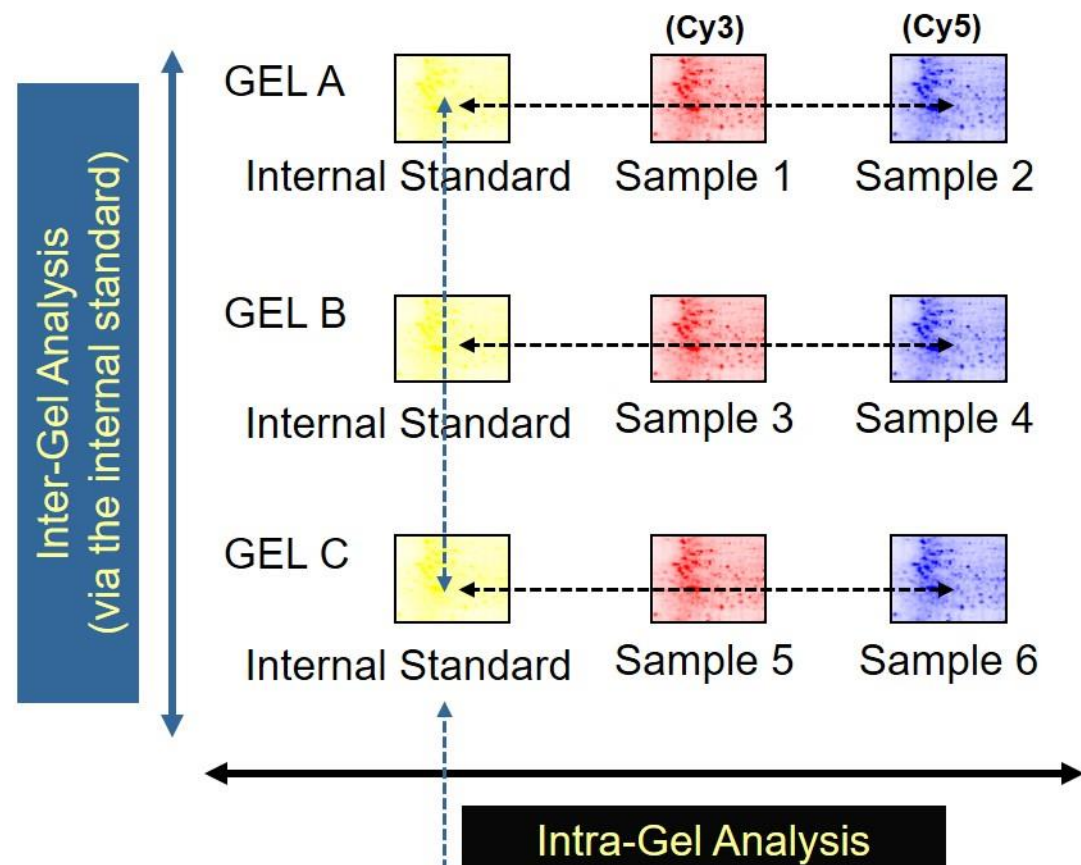


Image acquisition and analysis

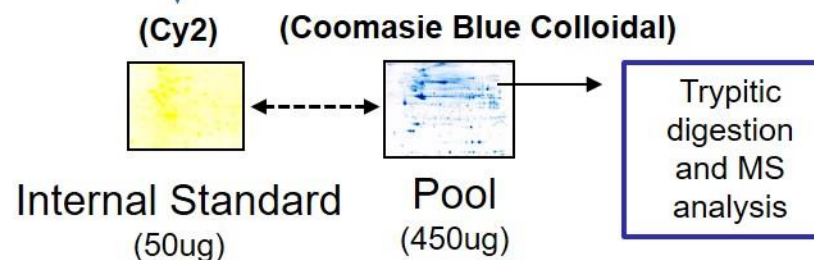


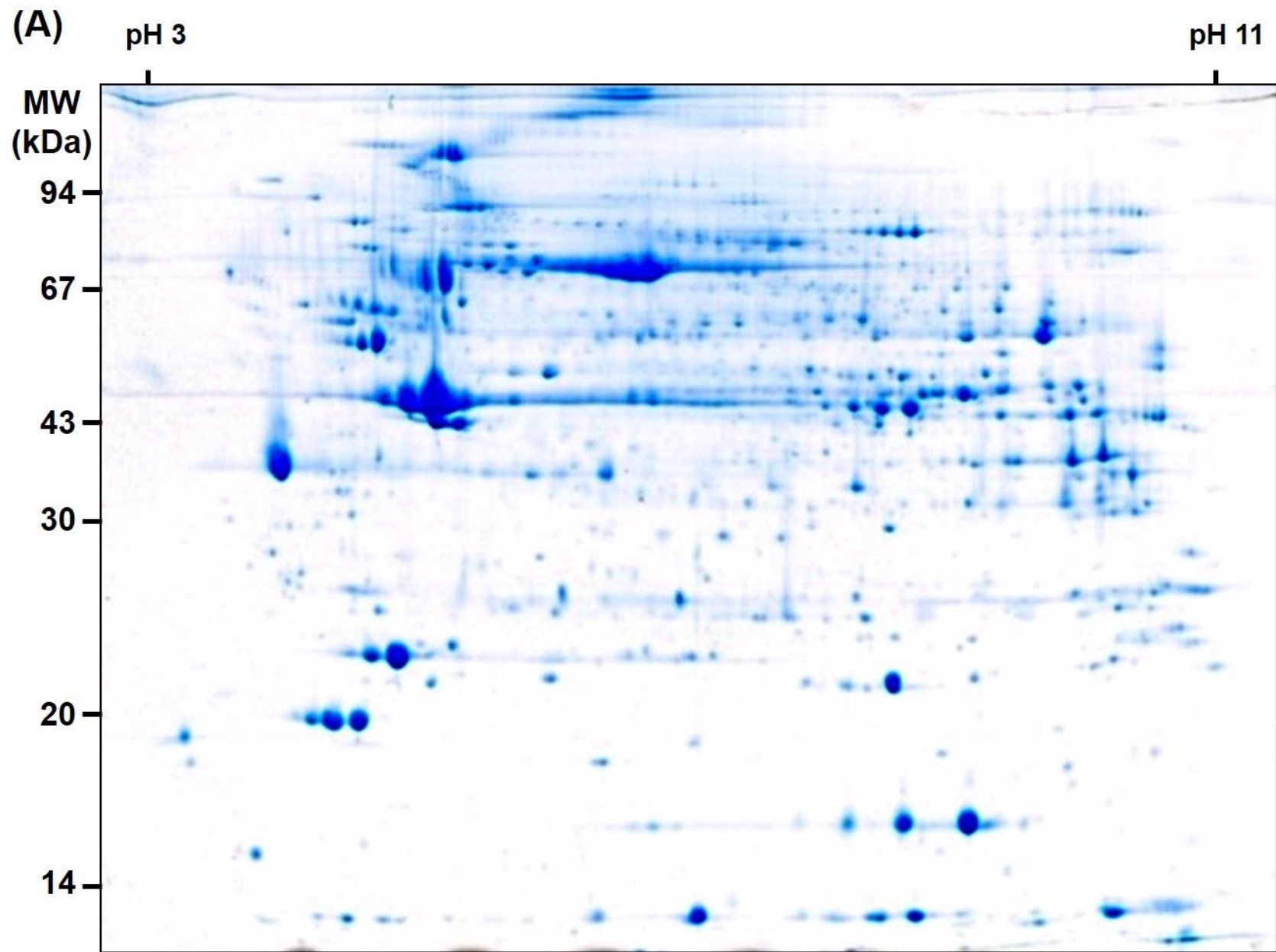
Analytical Gels



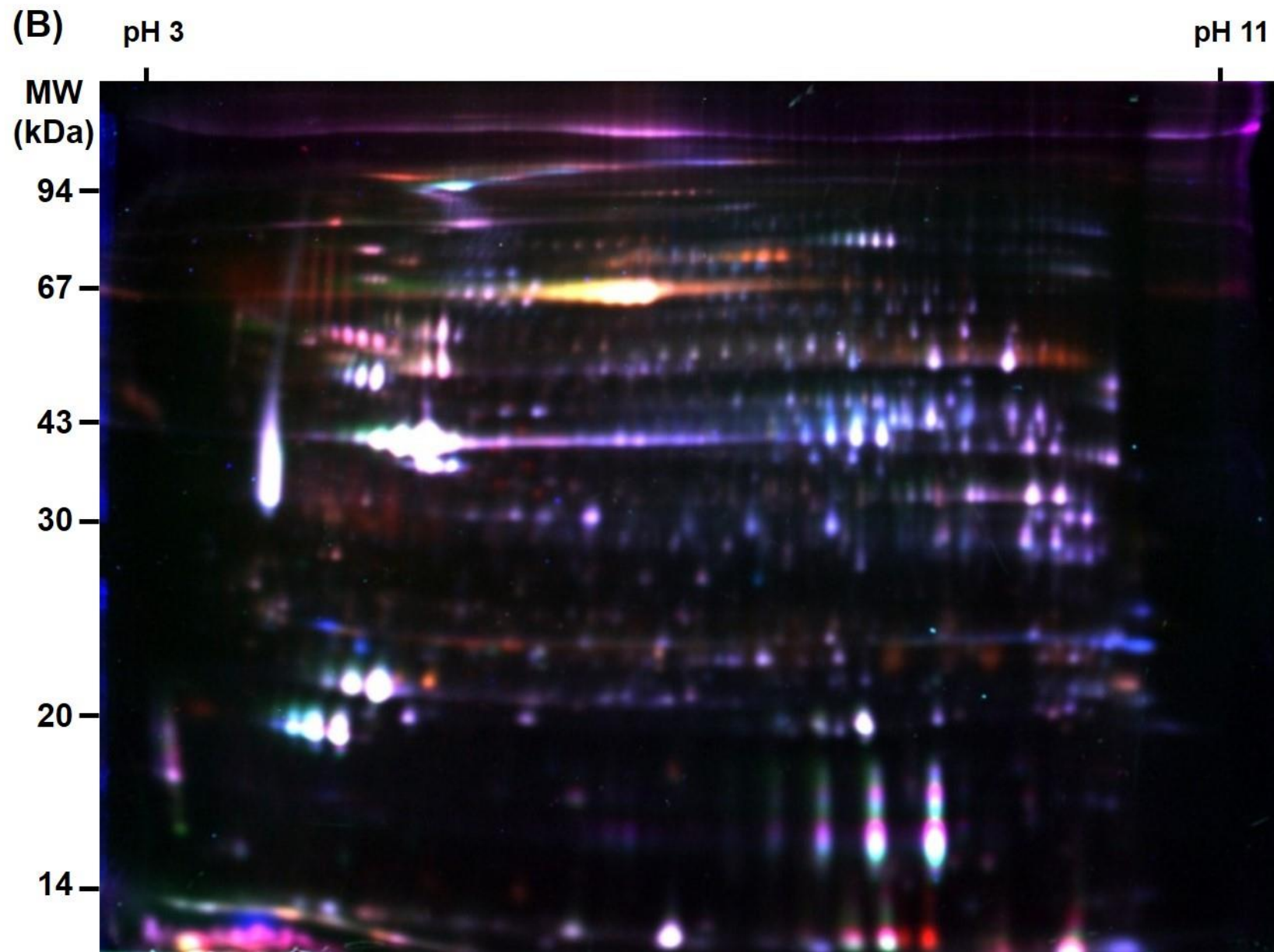
Gel for protein
identification by
MS

Preparative Gel



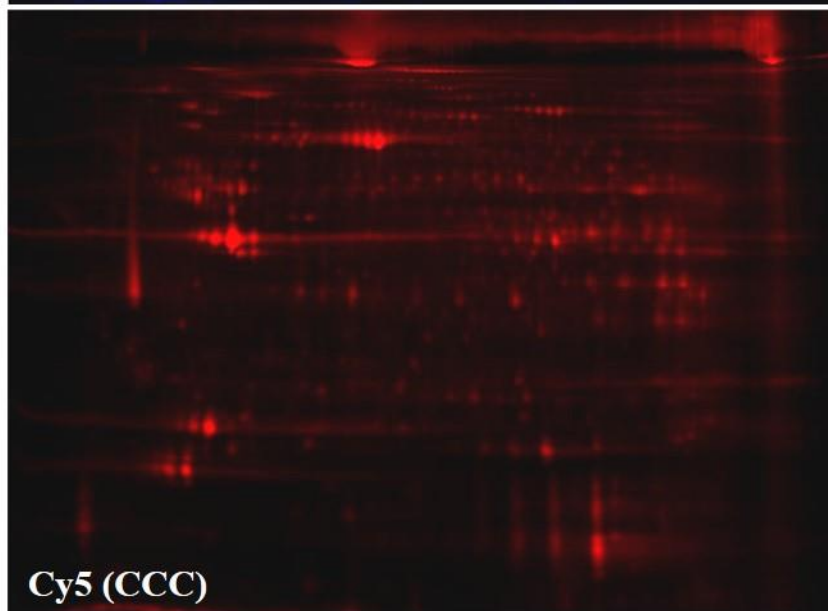
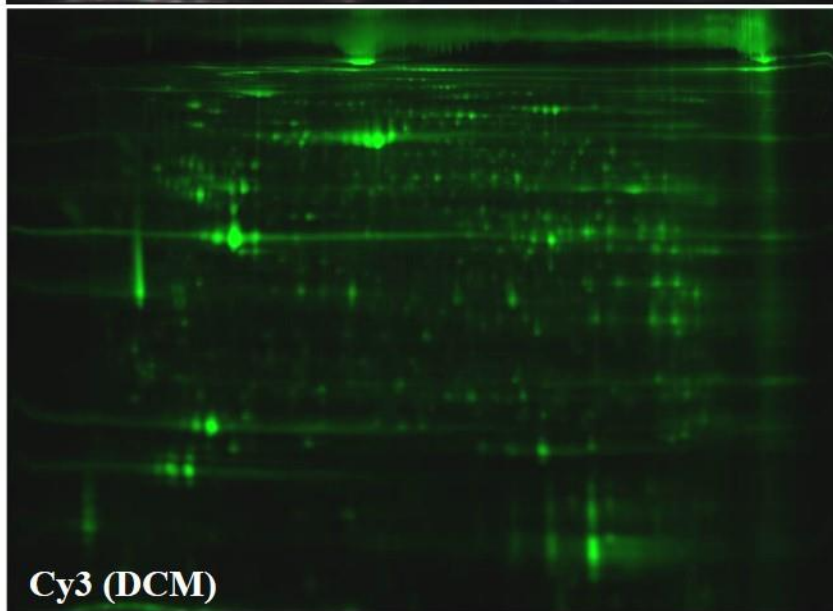
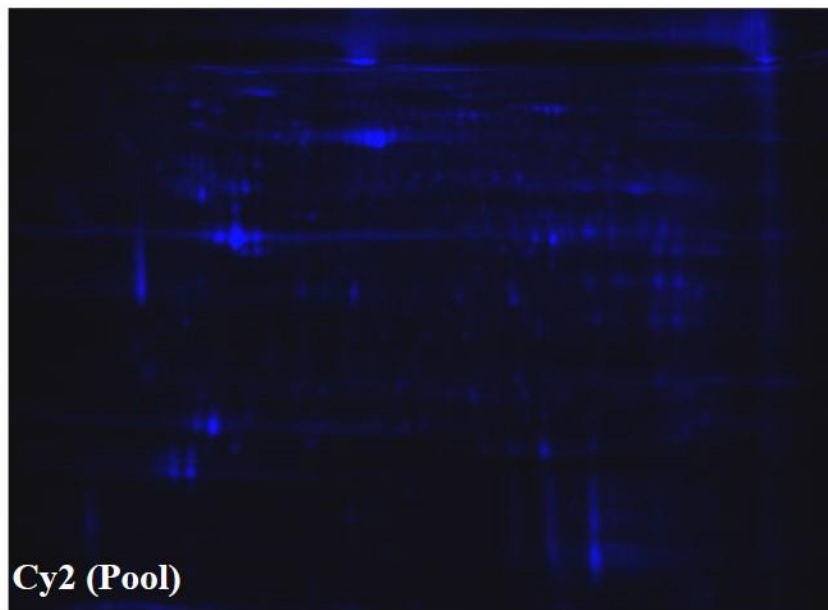
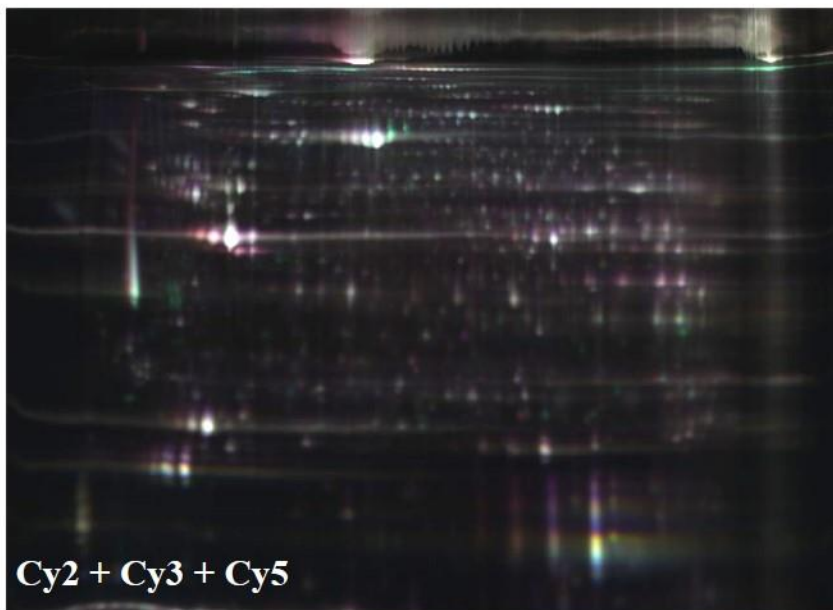


Supplemental
Figure S2a

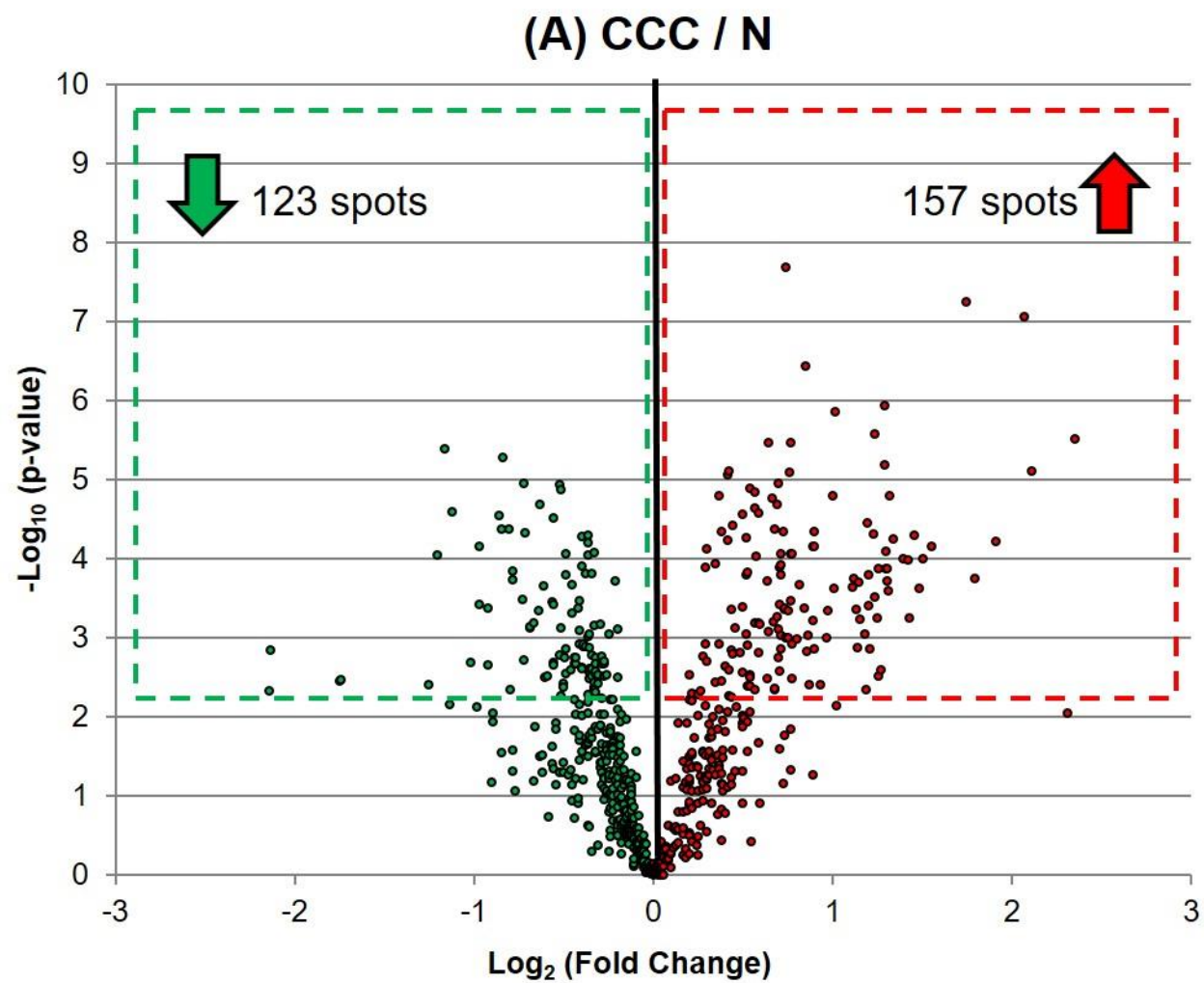


Supplemental
Figure S2b

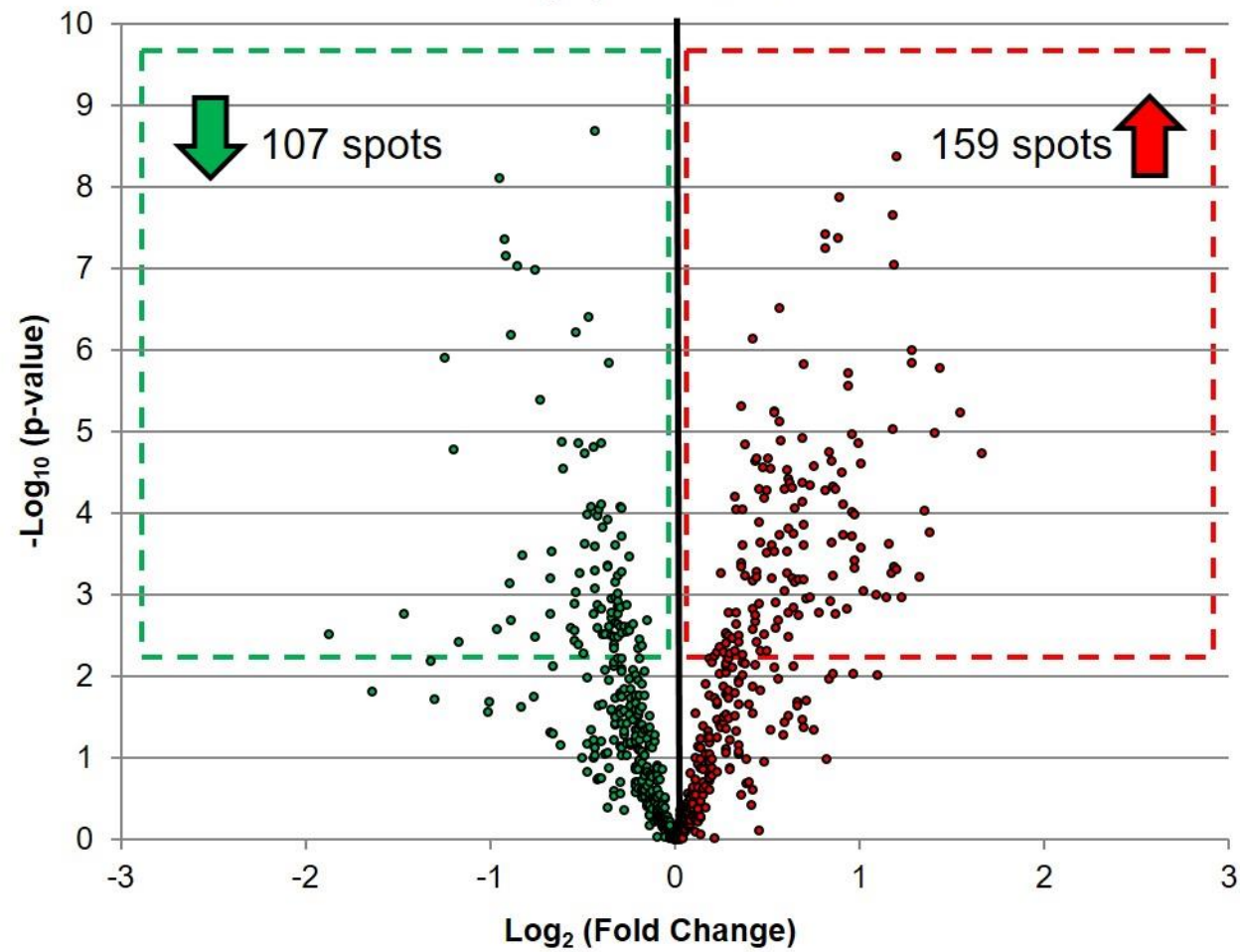
(C)

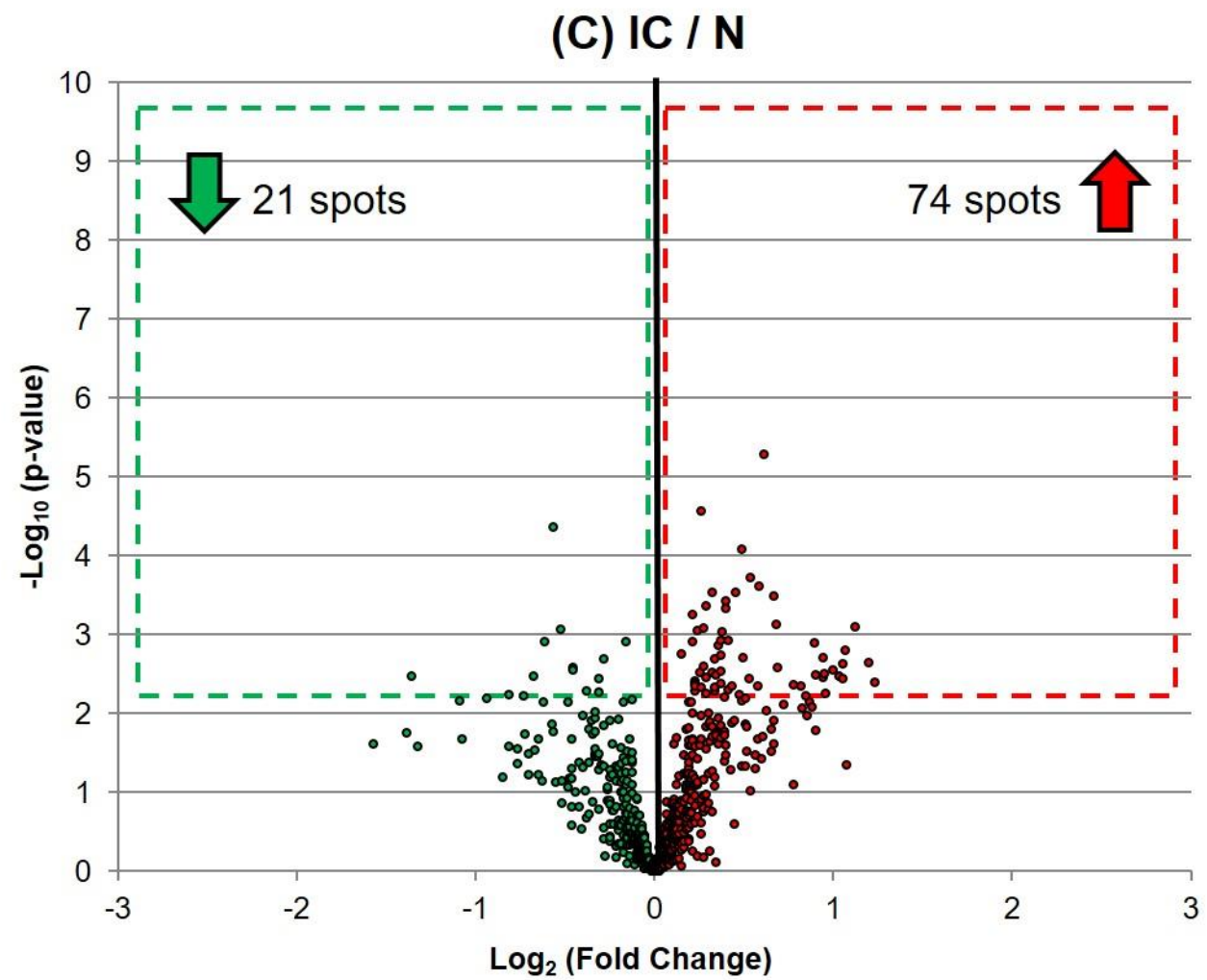


Supplemental
Figure S2c

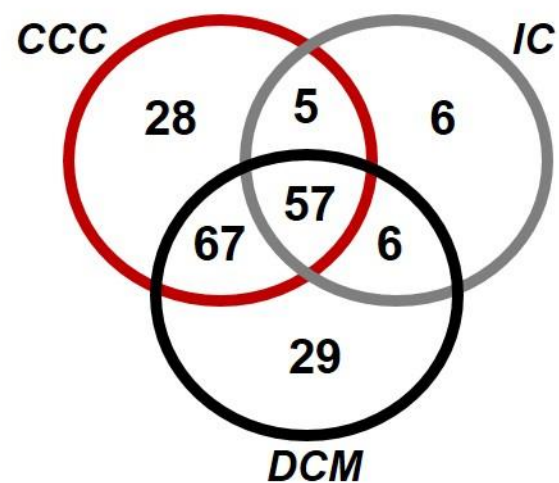


(B) DCM / N

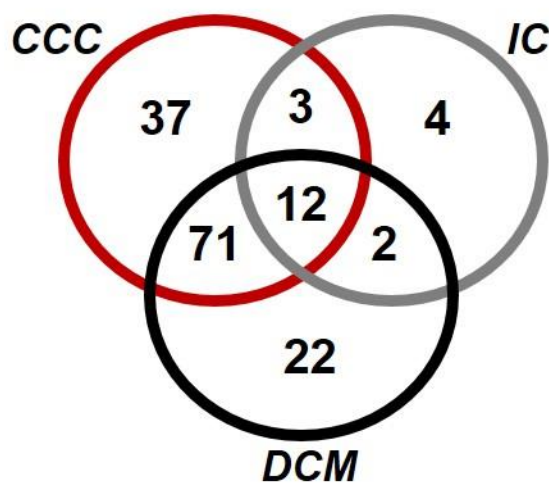




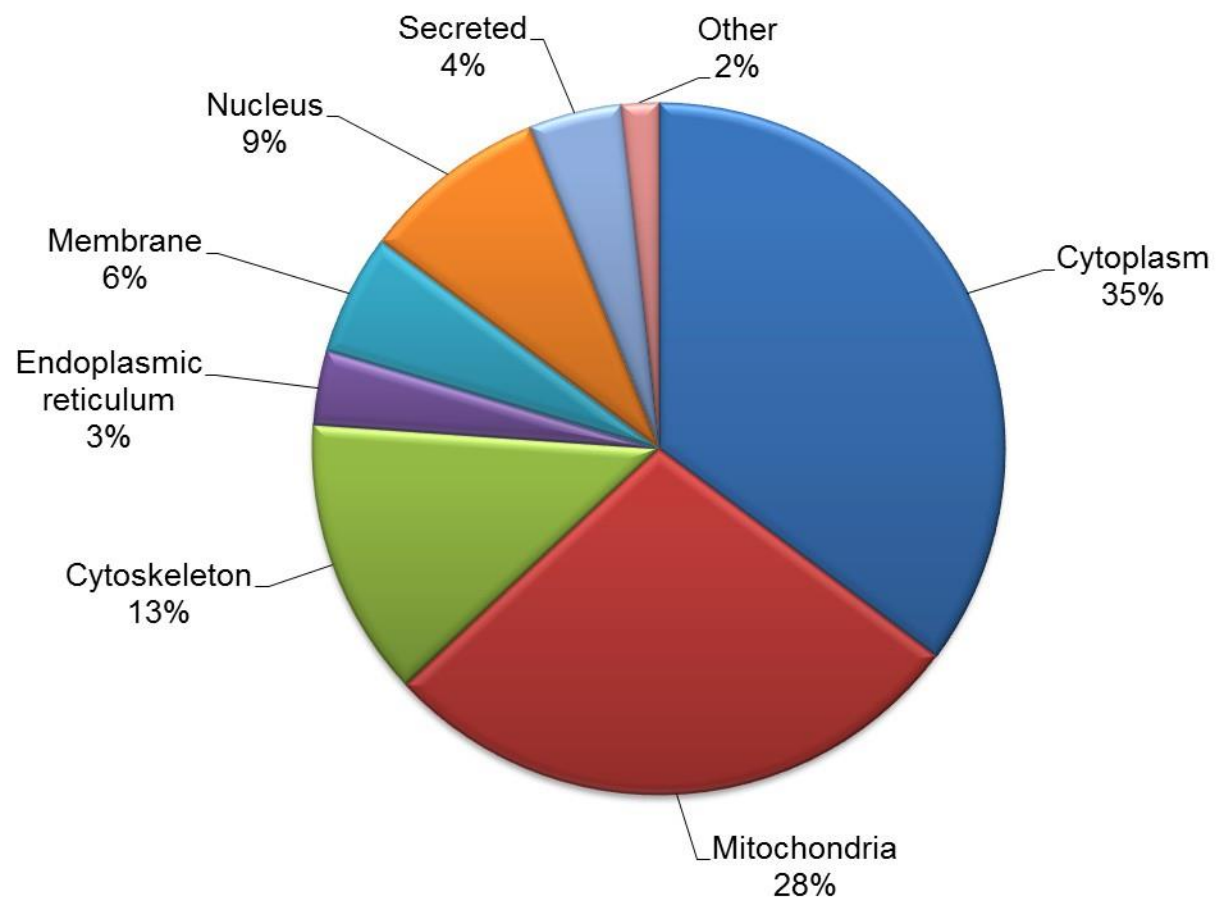
(A) Number of Spots with Increased Expression



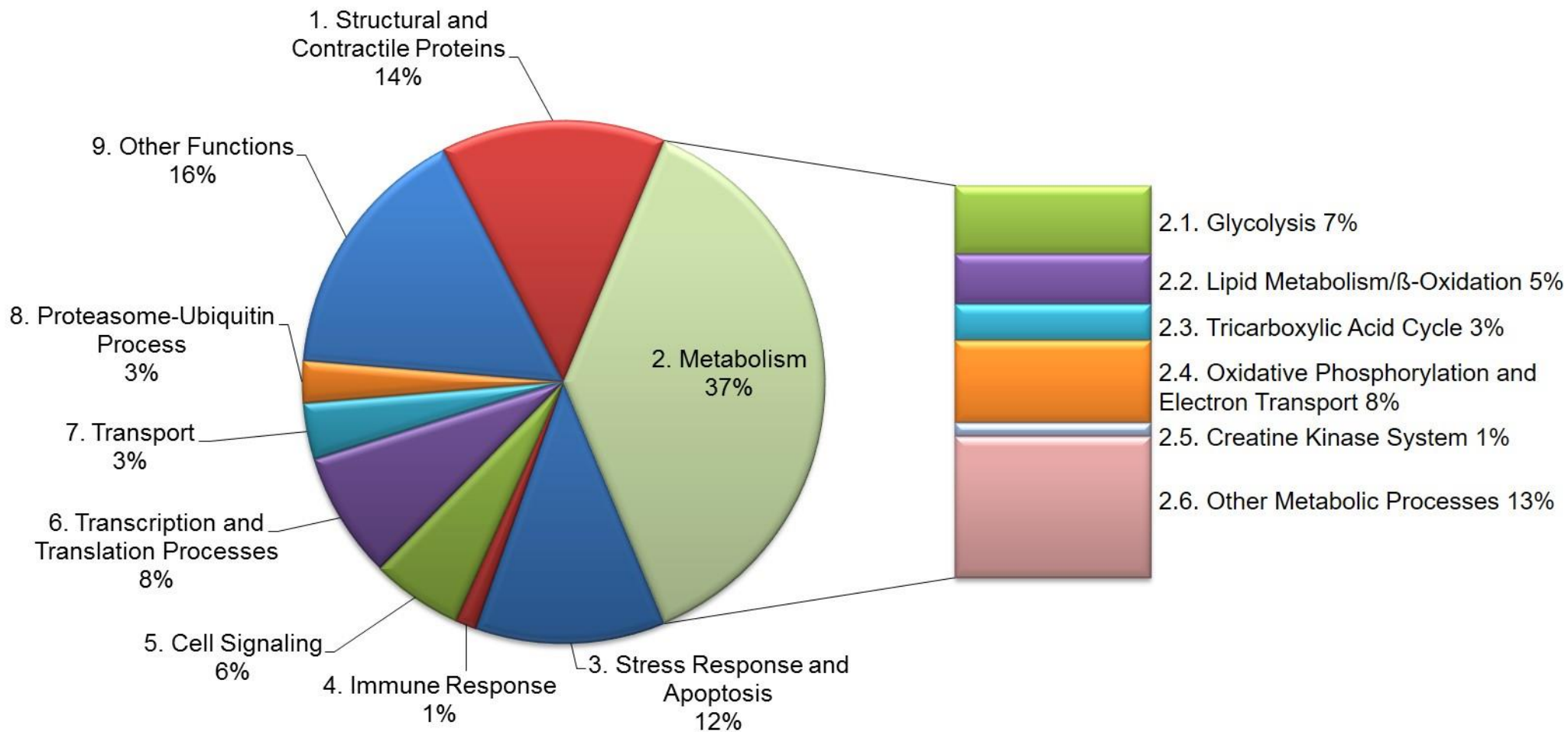
(B) Number of Spots with Decreased Expression



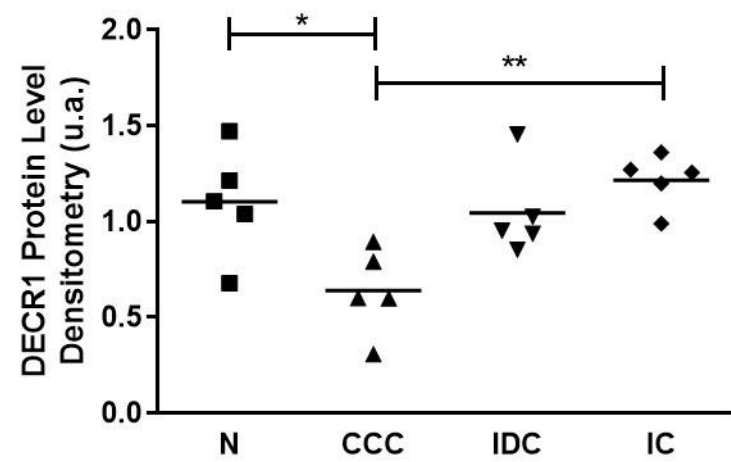
(A) Cellular Component



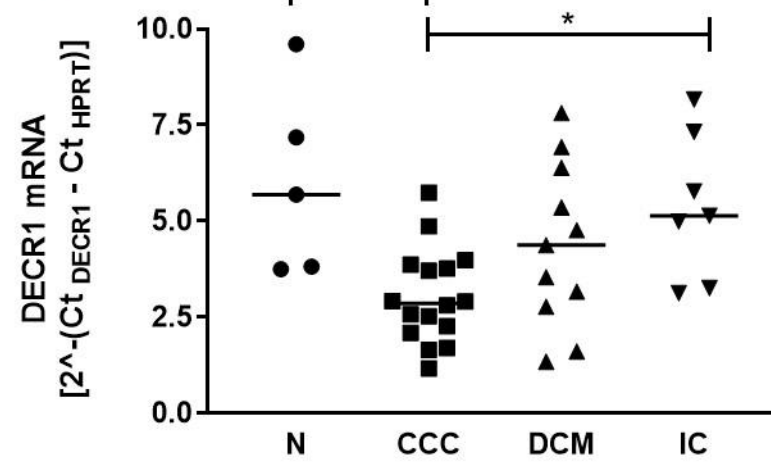
(B) Biological Process



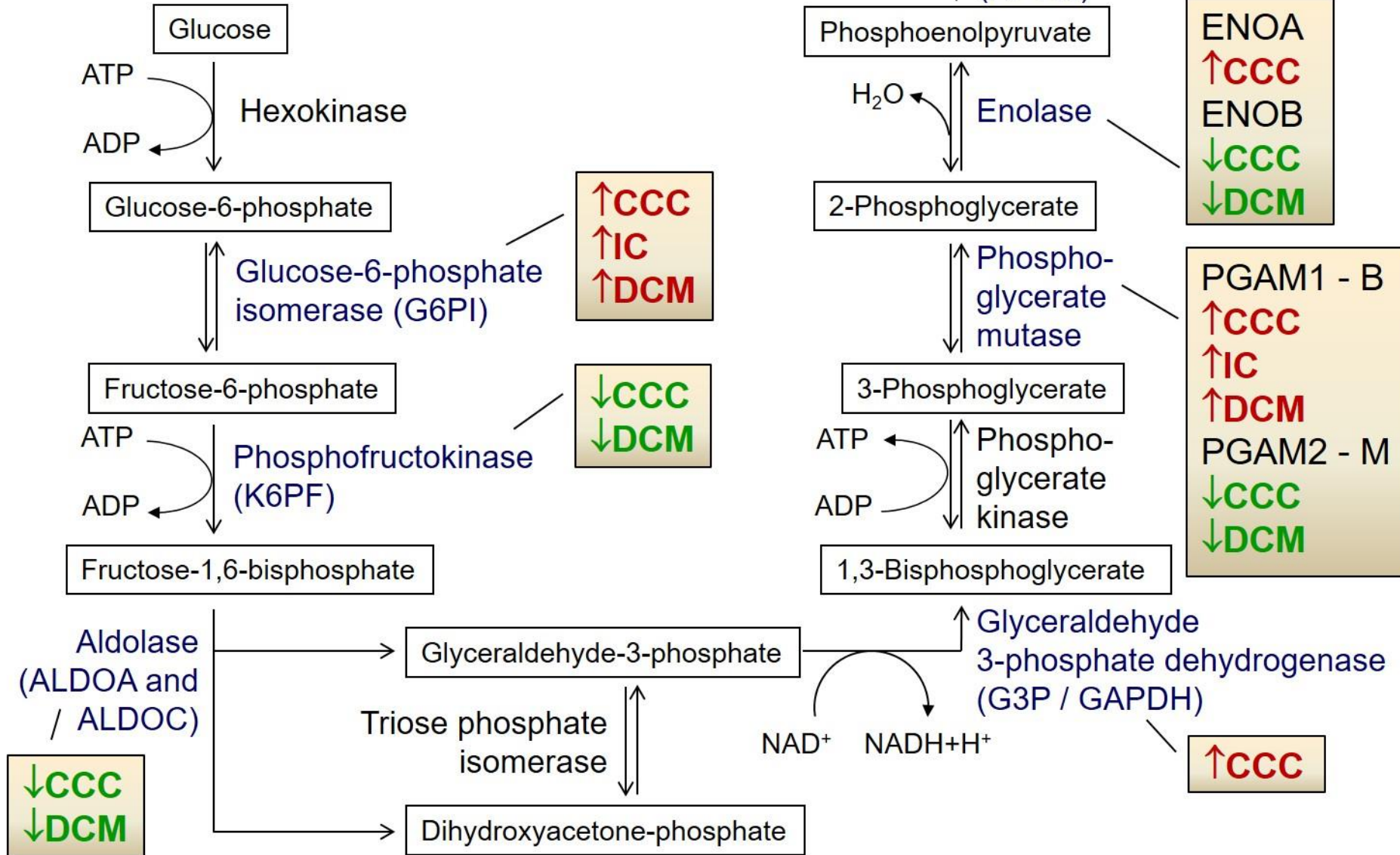
(A)



(B)

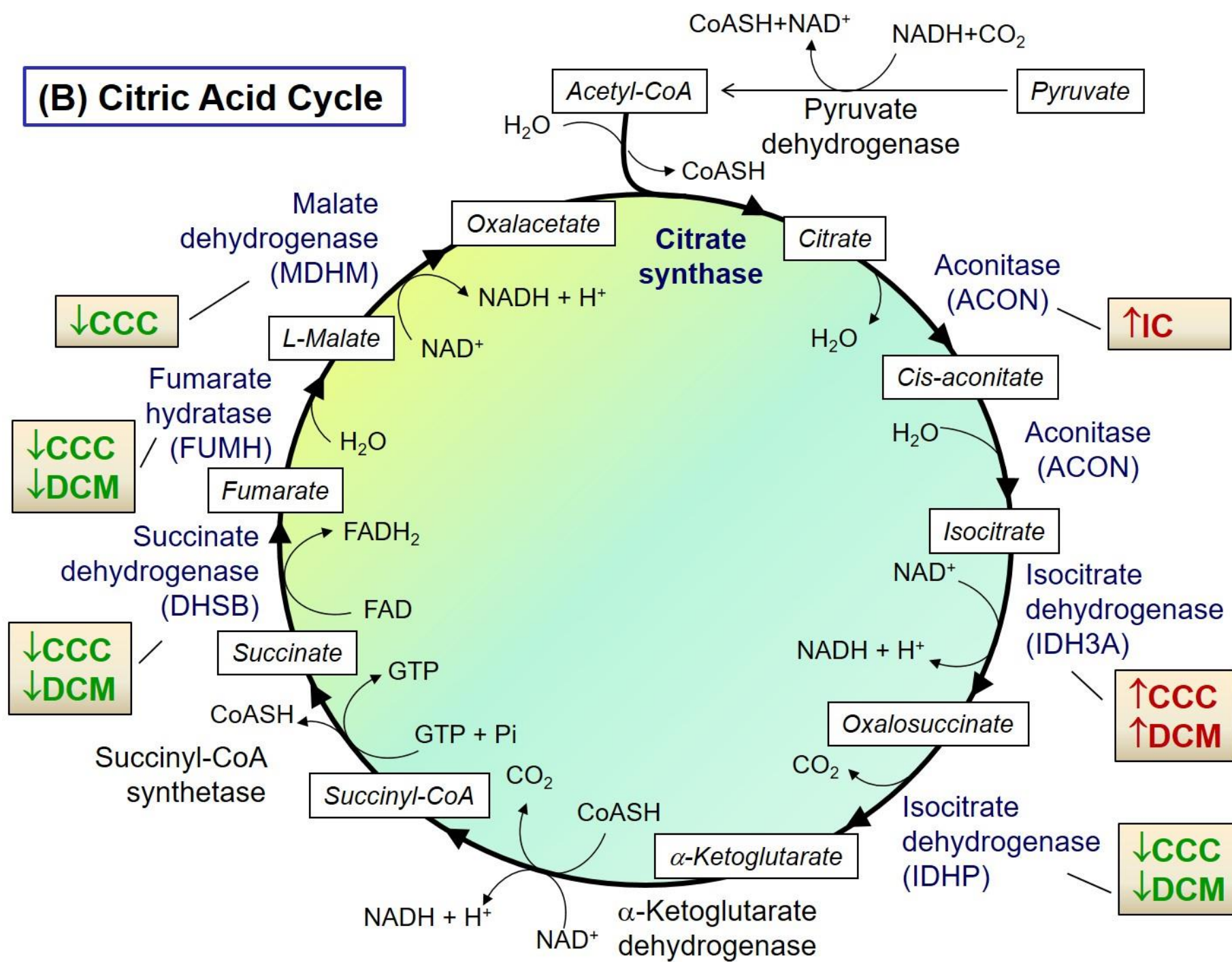


(A) Glycolysis



Supplemental
Figure S7a

(B) Citric Acid Cycle

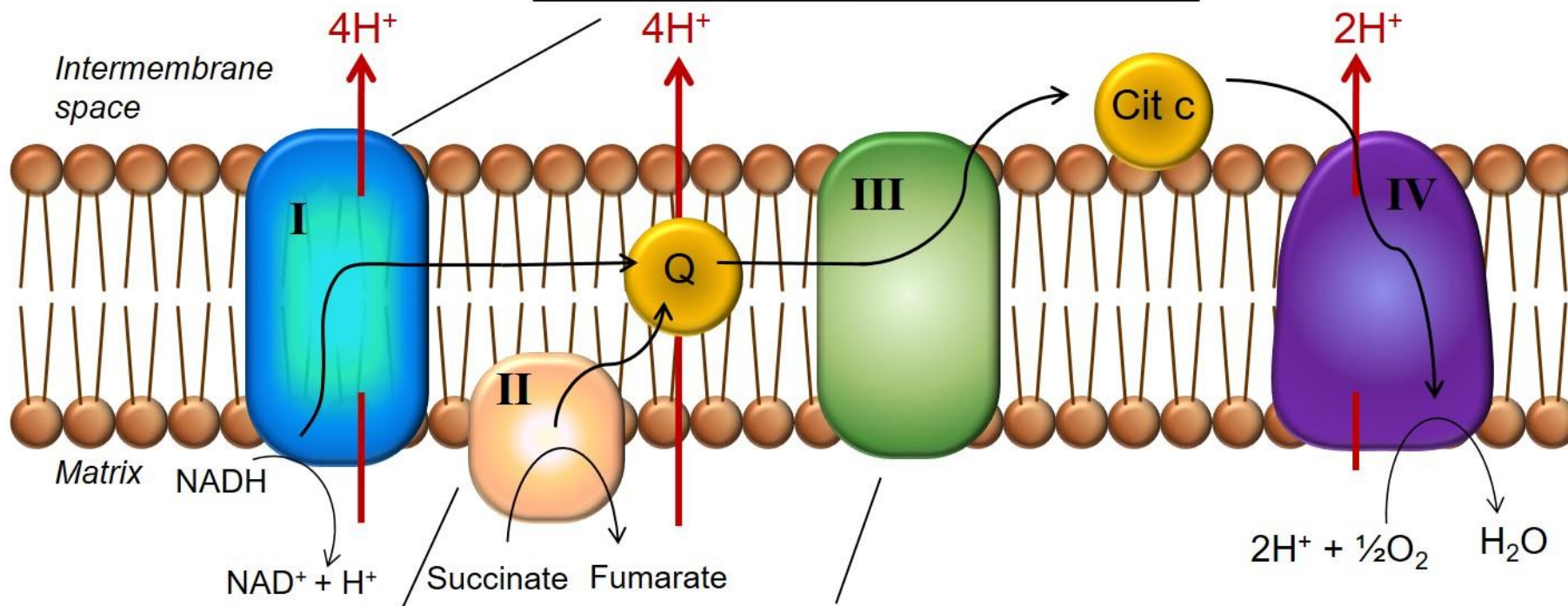


Supplemental
Figure S7b

(C) Oxidative Phosphorylation

Complex I
NADH:ubiquinone oxidoreductase
 NDUS3 - ↑**CCC** ↑**IC**
 NDUV2 - ↓**CCC** ↓**IC** ↓**DCM**
 NDUAA - ↓**CCC** ↓**DCM**
 NDUV1 - ↓**CCC** ↓**DCM**
 NDUS1 - ↓**CCC**

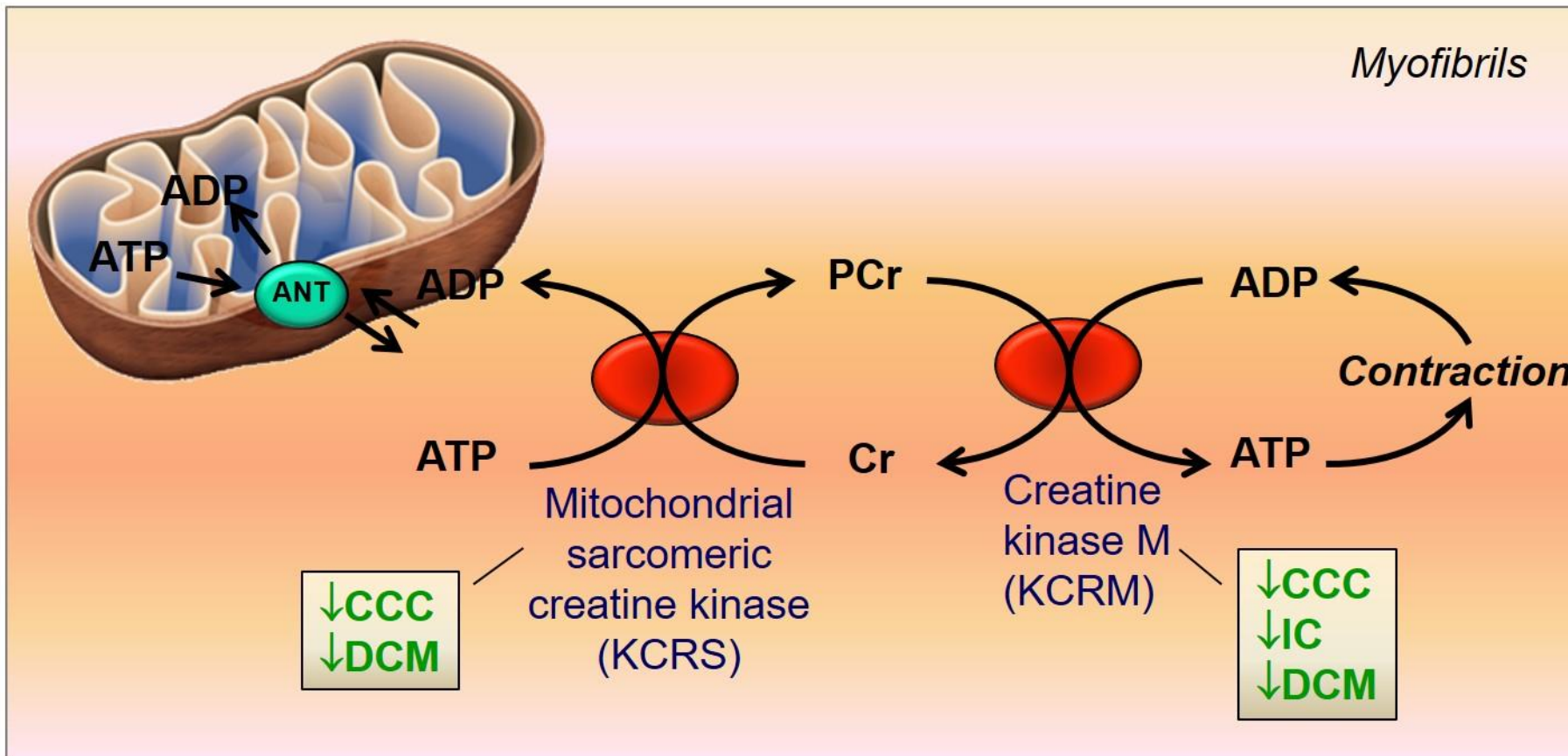
Supplemental
 Figure S7c



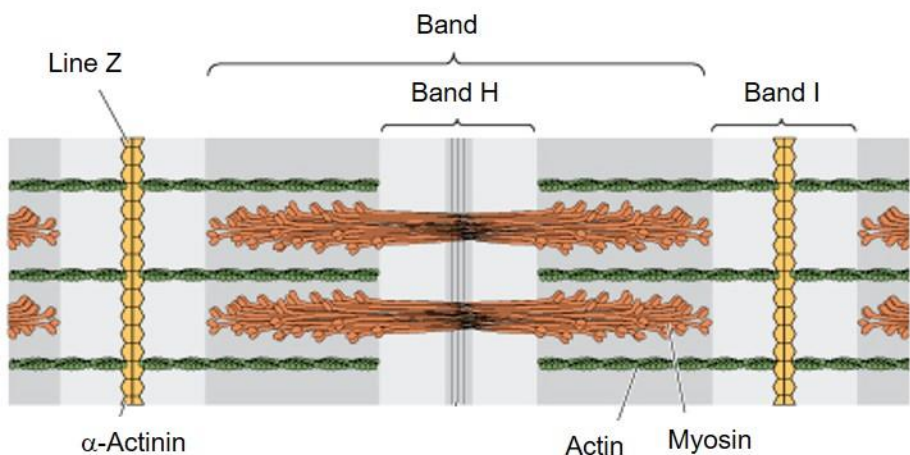
Complex II
Succinate dehydrogenase
 DHSA - ↑**CCC** ↑**IC** ↑**DCM**
 DHSB - ↓**CCC** ↓**IC** ↓**DCM**

Complex III
Ubiquinone:cytochrome c oxidoreductase
 QCR1 - ↓**CCC** ↓**DCM**
 QCR2 - ↓**CCC** ↓**DCM**

(D) Creatine Kinase System

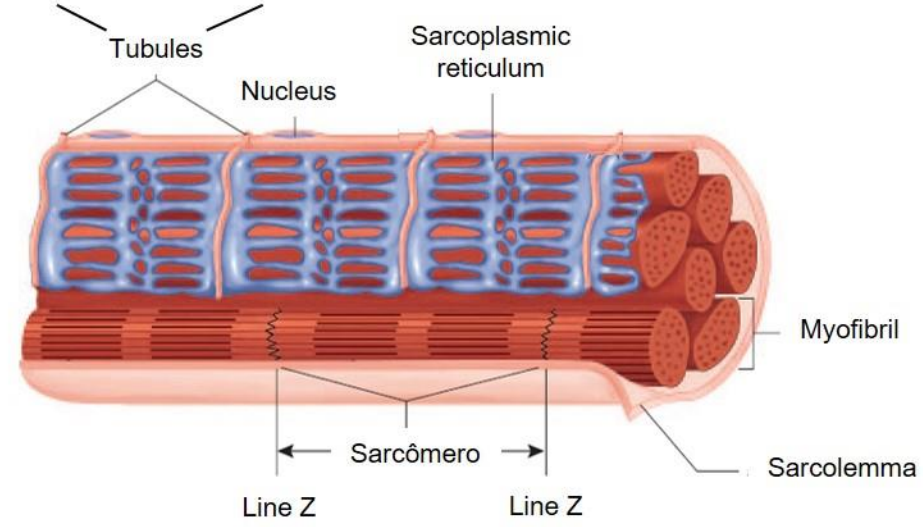


Sarcomeric proteins



TBA1C
 ↑CCC
 ↑DCM

TBB5
 ↑CCC
 ↑DCM



ACTN2
 ↓CCC
 ↓IC

ACTC
 ↓CCC
 ↓IC
 ↓DCM

MYL3
 ↓CCC
 ↓DCM

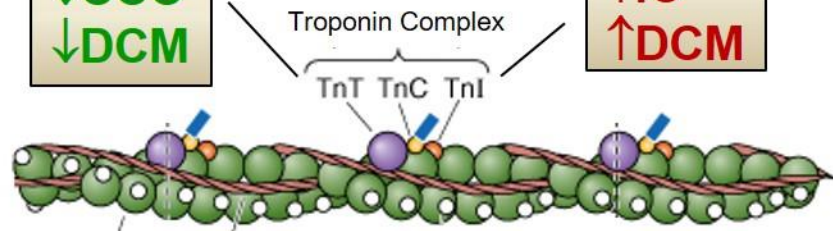
MYL2
 ↓CCC
 ↓DCM

MYH7
 ↓CCC
 ↓IC
 ↓DCM

MYL4
 ↓CCC

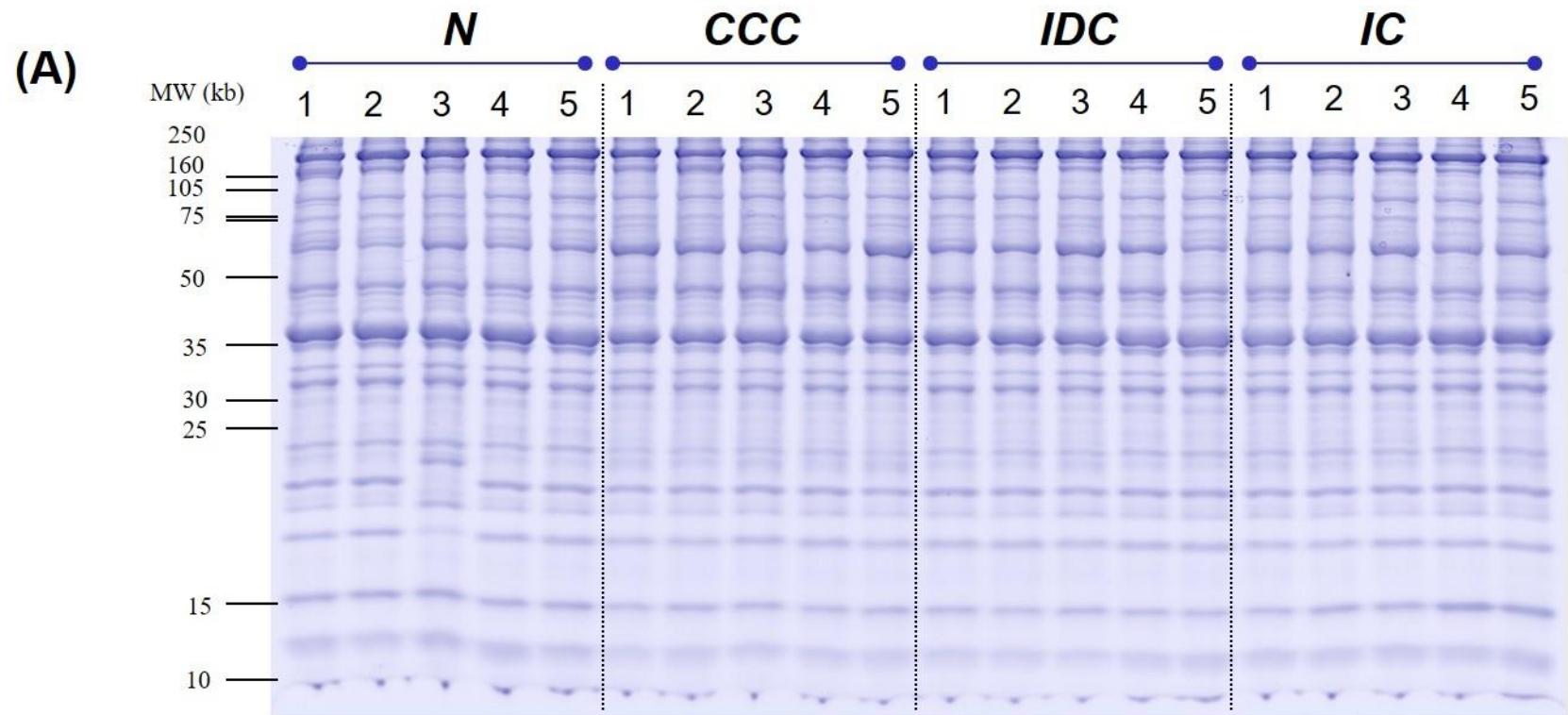
TnT
 ↓CCC
 ↓DCM

TnI
 ↑CCC
 ↑IC
 ↑DCM



TPM1
 ↓CCC

Supplemental Figure S8



Supplemental
Figure S9

