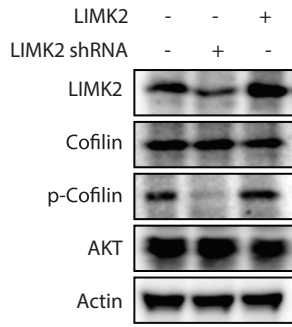
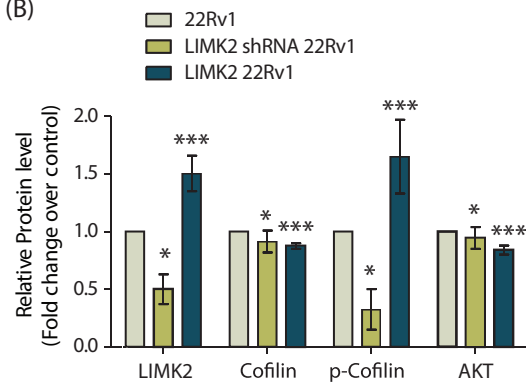


(A)

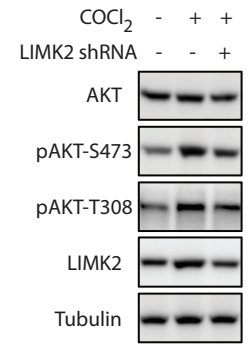


22Rv1

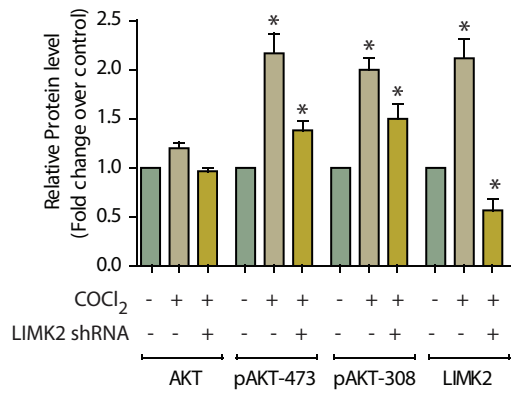
(B)



(C)

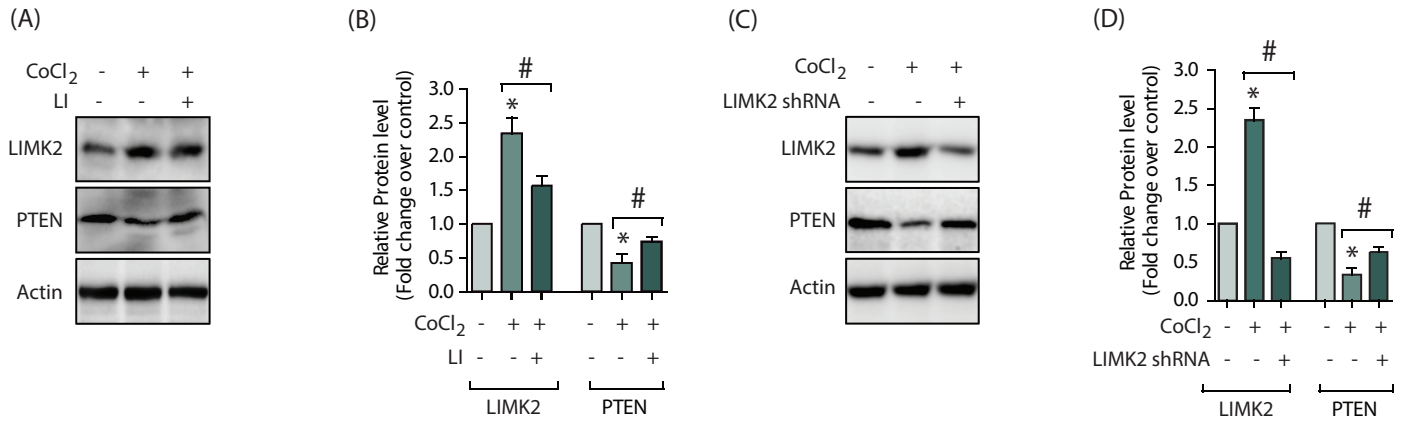


(D)



22Rv1

Supplementary Figure 1



Supplementary Figure 2

**Supplementary Table 1**

	<b>Antibody</b>	<b>Catalog Number</b>	<b>Company</b>	<b>RRID/Lot</b>
1	LIMK2	SC-365414	Santa Cruz Biotech	RRID:AB_10847817
2	Actin	SC-8432	Santa Cruz Biotech	RRID:AB_626630
3	Tubulin	SC-8035	Santa Cruz Biotech	RRID:AB_628408
4	PTEN	SC-7974	Santa Cruz Biotech	RRID:AB_628187
5	SNAIL	PB9439	Boster	Lot#0931512DA859969
6	SLUG	PB9399	Boster	Lot#0931512DA859969
7	N-Cadherin	PA1328	One World Lab	AB_10891323
8	CD44	PA1021	One World Lab	AB_10890445
9	Vimentin	SC-7558	Santa Cruz Biotech	RRID:AB_794002
10	E-Cadherin	bs-10009R	Bioss Inc	Lot#9L18W1
11	MMP-2	bs-4599R	Bioss Inc	RRID:AB_11083963
12	HA	12CA5	Thermo Fisher	RRID:AB_1958069
13	6x-His	AB-1711	Columbia Bioscience	Lot# PUR01016008
14	AKT	9272	Cell Signaling	RRID:AB_329828
15	pAkt-T308	9275S	Cell Signaling	RRID:AB_329828
16	pAkt-S473	SC-293125	Santa Cruz Biotech	
17	Lamin-A	SC-20680	Santa Cruz Biotech	RRID:AB_648148
18	Phospho-Ser	SC-81514	Santa Cruz Biotech	RRID:AB_112862
19	Phospho-Cofilin	SC-271921	Santa Cruz Biotech	RRID:AB_10610754
20	Histone H4	SC-10810	Santa Cruz Biotech	RRID:AB_2118775

## Supplementary Table 2

### Real-time qPCR primers:

Name	Primer Sequences
LIMK2 F	5'- GTTGTAGGGAACTGAGGGGAG A-3'
LIMK2 R	5'- GGCATTCTGAACACCGGAAG -3'
PTEN F	5'- CAAGATGATGTTTGAAACTATTCCAATG -3'
PTEN R	5'- CCTTTAGCTGGCAGACCACAA -3'
$\beta$ -Actin F	5'- CATGTACGTTGCTATCCAGGC -3'
$\beta$ -Actin R	5'- CTCCTTAATGTCACGCACGAT -3'