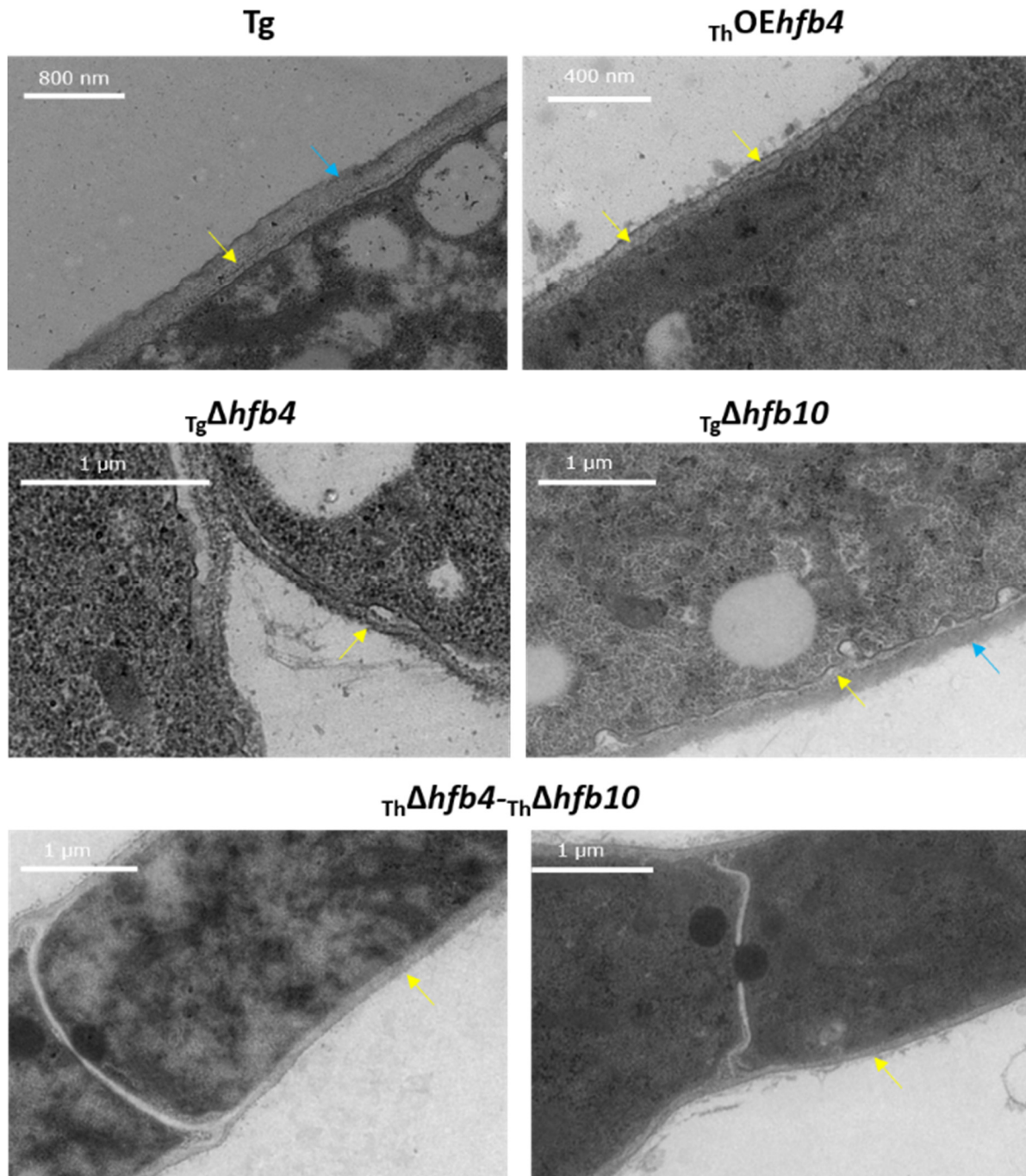


Supporting Information S14 Fig. Cell wall ultrastructure of HFB mutants of *Trichoderma*



**Fig S14** Cell wall ultrastructure of HFB mutants of *Trichoderma*. Strains cultivated on PDA plates at 25 °C in darkness for 48 h. Yellow arrows point to the cell wall, and blue arrows indicate the extracellular matrix.