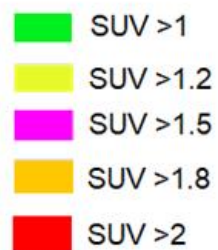
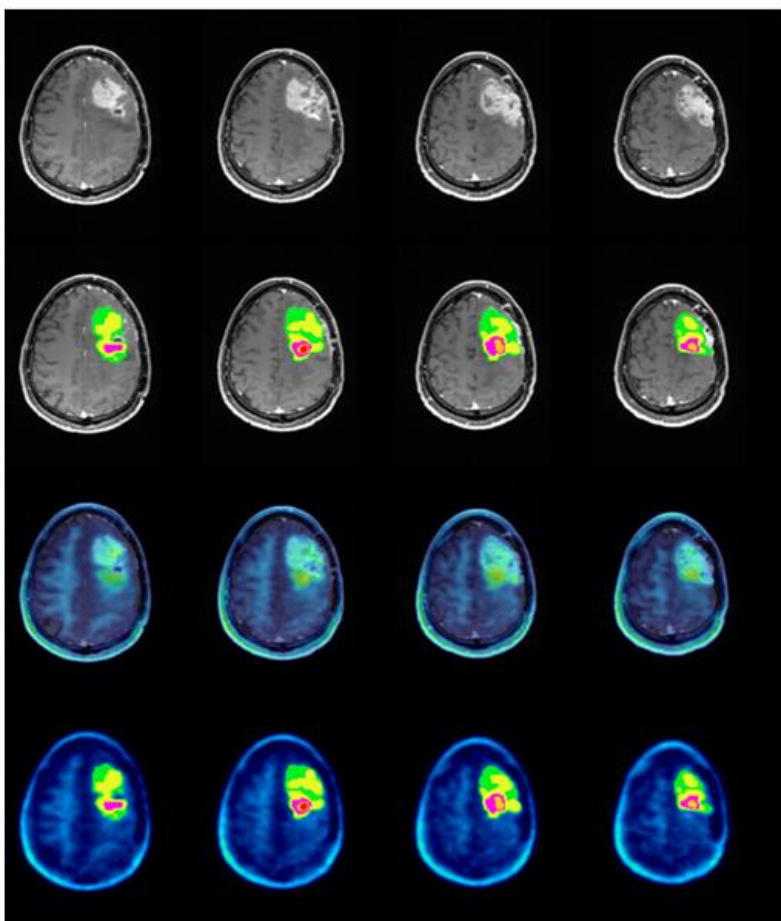
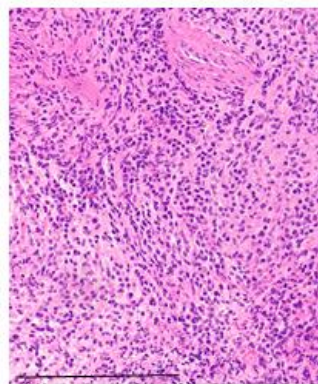
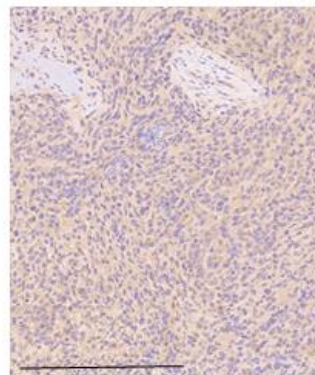
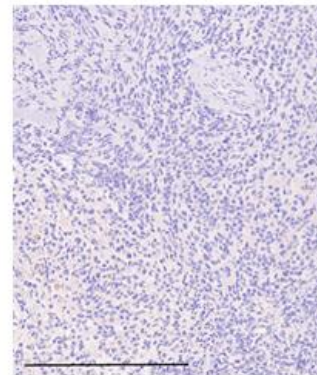


A**B****C****D**

Supplemental Fig. 5. Post-therapy Imaging of IC-1. **A** Row 1: contrast enhanced T1-weighted MRI image slices in the coronal plane are shown. Row 2: Concentric volumes of interest from [¹⁸F]DASA-23 PET are overlaid on contrast enhanced T1-weighted MRI. Volumes of interest are color scaled according to SUV range in the legend. Row 3: Fused [¹⁸F]DASA-23 PET and contrast enhanced T1-weighted MRI. Row 4: Concentric volumes of interest from [¹⁸F]DASA-23 PET are overlaid on the [¹⁸F]DASA-23 PET image. **B** H&E of the biopsied tissue is shown at 10x, scale bar represents 300 μm. **C** PKM2 and **D** PKM1 IHC is shown at 10x and scale bar represents 300 μm.